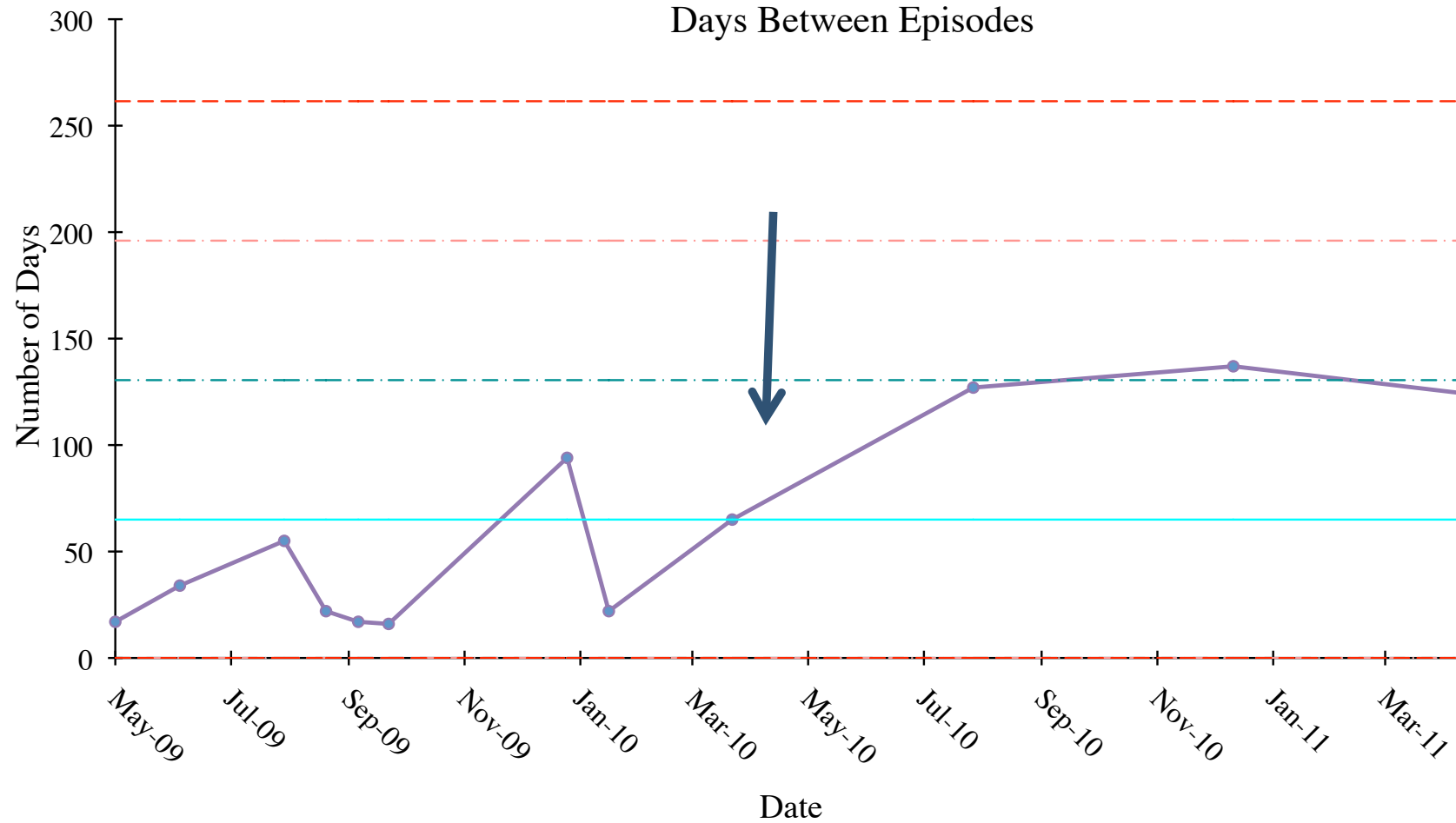


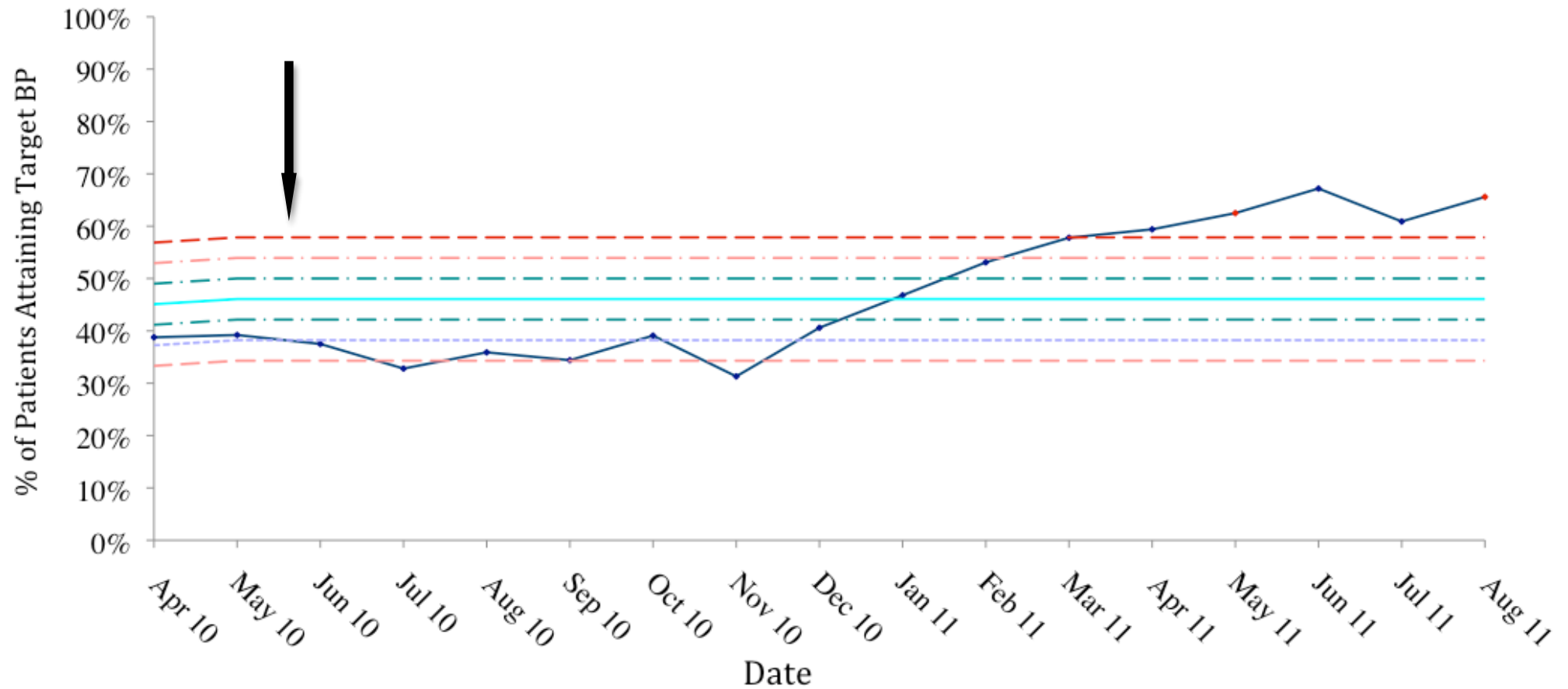
Figure 2. G chart and statistical process control (SPC) charts of results.

(a)Unit A. Days between bacteraemia episodes. (b)Unit B. Percentage of patients with BP<140/90. (c)Unit C. Percentage of patients with URR>65%. (d)Unit D. Percentage of patients with target Hb. SPC charts for BP, URR, HB showing attainment of project aim by month for each unit and G Chart showing days between infections for HDCRBSI where each point represents an infection, with days between each infection plotted on the y axis. At least 1 year pre intervention data shown in units A, C and D. Unit B recorded data on paper charts prior to April 2010 therefore data samples were analysed pre-intervention and full retrospective pre-intervention data has not been obtained. The arrows on each chart represent the start of the QI project. The solid line on chart (a) represents mean number of days between infections prior to the intervention. The dashed lines represent standard deviations from the mean. The solid line on charts (b), (c) and (d) represents the average attainment of the target parameter prior to the intervention. The dashed lines on charts (b), (c) and (d) represent standard deviations from the mean.

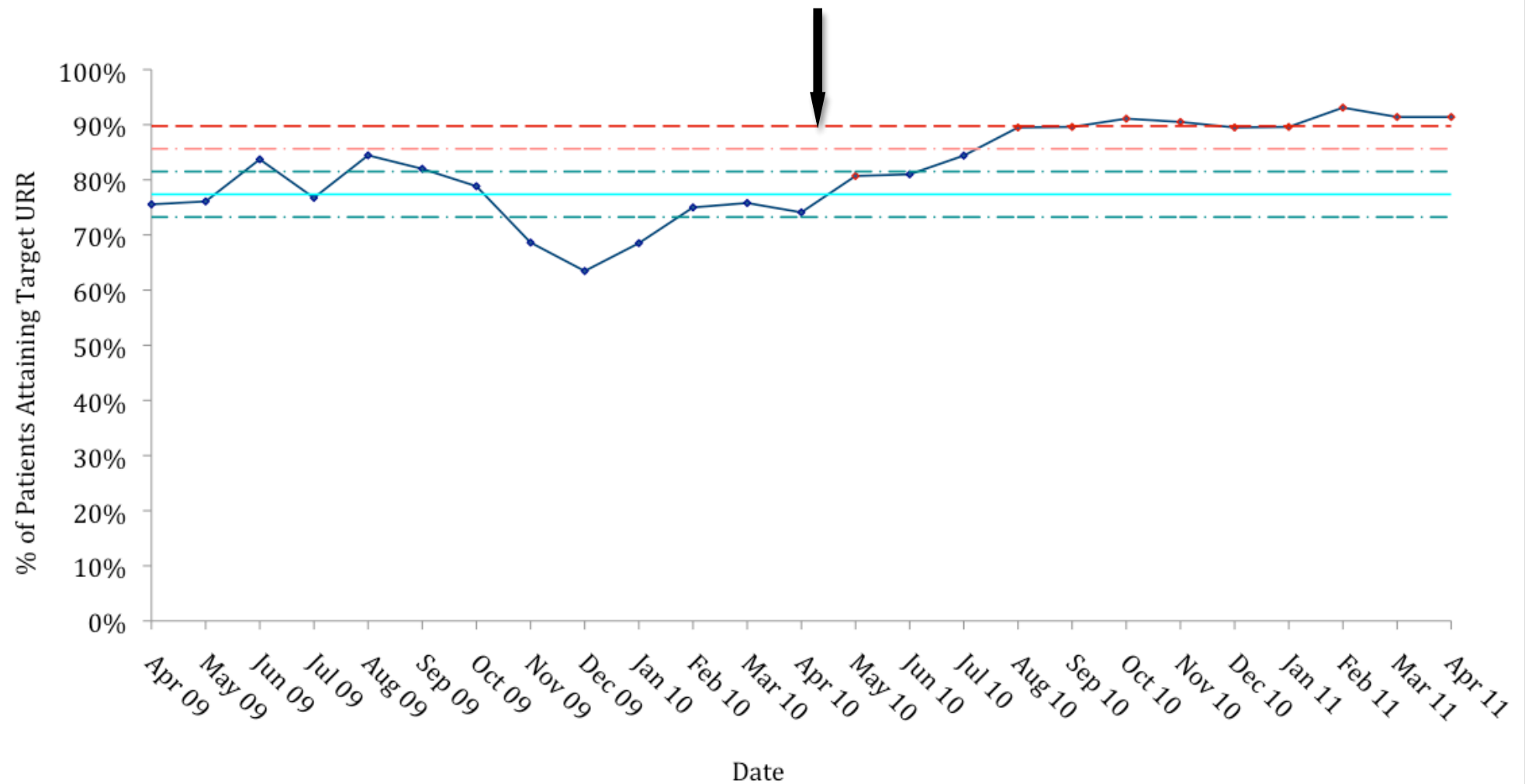
# Unit A: HD Catheter Related Bacteraemia Days Between Episodes



# Unit B: BP<140/90 SPC Chart



Unit C: Dialysis dose  
SPC Chart



# Unit D: Anaemia SPC chart

