

Supporting information for

**Variable Crystal Orientation of Poly(ethylene oxide) Confined within
the Tubular Space Templated by Anodic Aluminum Oxide
Nanochannels**

Chien-Liang Liu¹ and Hsin-Lung Chen^{2*}

¹National Synchrotron Radiation Research Center, 101 Hsin-Ann Road, Hsinchu
Science Park, Hsinchu 30076, Taiwan

²Department of Chemical Engineering and Frontier Center of Fundamental and
Applied Sciences of Matters, National Tsing Hua University, Hsin-Chu 30013,
Taiwan

*To whom correspondence should be addressed:

H.-L. Chen: hlchen@che.nthu.edu.tw

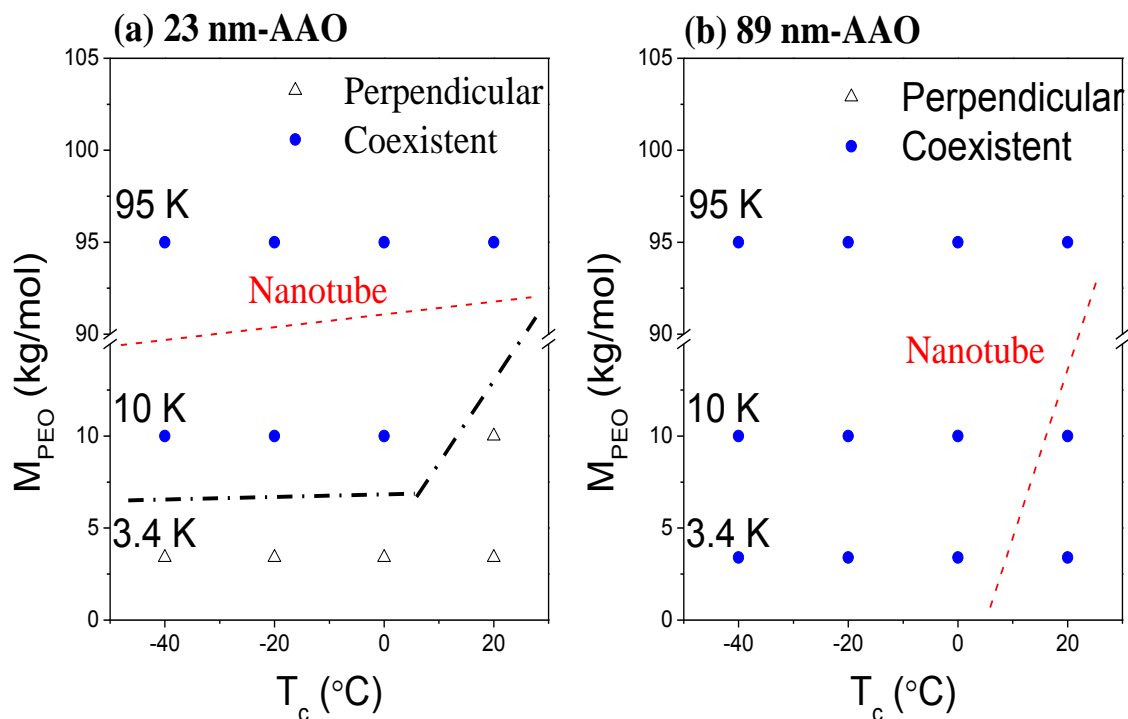


Figure S1. Orientation diagram of PEO crystallites in the nanorods templated by: (a) 23 nm-AAO and (b) 89 nm-AAO. The red dashed lines define the boundary between the perpendicular orientation and coexistent orientation for the nanotube. It can be seen that the window of the perpendicular orientation was much smaller in the nanorod than that associated with the nanotube.