

## **Supporting Information**

### **3D Bioprinting a Cell-laden Bone Matrix for Breast Cancer Metastasis Study**

Xuan Zhou<sup>1</sup>, Wei Zhu<sup>1</sup>, Margaret Nowicki<sup>1</sup>, Shida Miao<sup>1</sup>, Haitao Cui<sup>1</sup>, Benjamin Holmes<sup>1</sup>,

Robert I. Glazer<sup>4</sup>, Lijie Grace Zhang<sup>1,2,3\*</sup>

<sup>1</sup>Department of Mechanical and Aerospace Engineering

<sup>2</sup>Department of Biomedical Engineering

<sup>3</sup>Department of Medicine

The George Washington University, Washington DC 20052, USA

<sup>4</sup>Department of Oncology, and Lombardi Comprehensive Cancer Center, Georgetown

University Medical Center, Washington, DC 20007

\*Corresponding Author:

Email: [lgzhang@gwu.edu](mailto:lgzhang@gwu.edu)

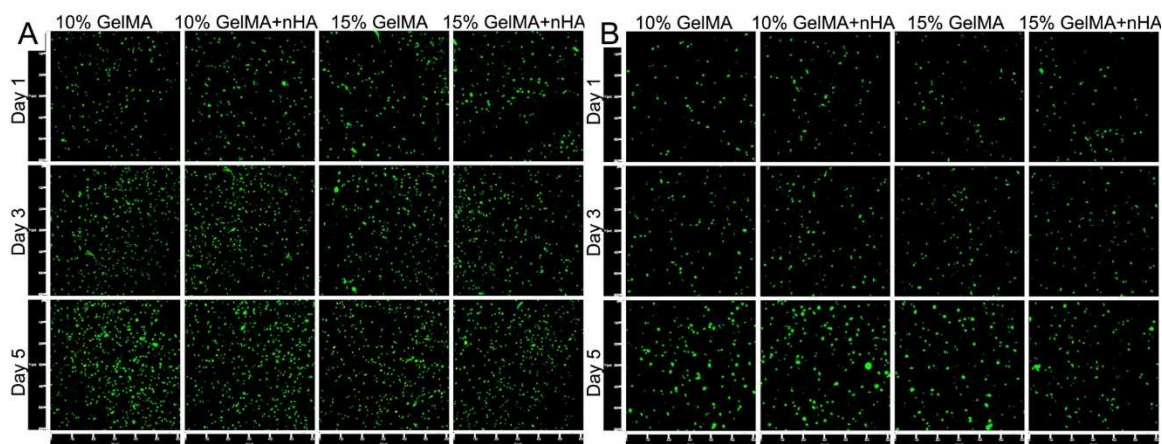


Figure S1. Confocal micrographs of osteoblasts (A) and MSCs (B) mono-cultured in the matrix after 1, 3 and 5 days. Before being 3D bioprinted, cells were pre-labeled by Cell Tracker™ Green CMFDA Dye.