

Supporting Information

Deposition and Characterization of Extended Single-Stranded DNA Molecules on Surfaces

Adam T. Woolley* and Ryan T. Kelly

Nano Letters

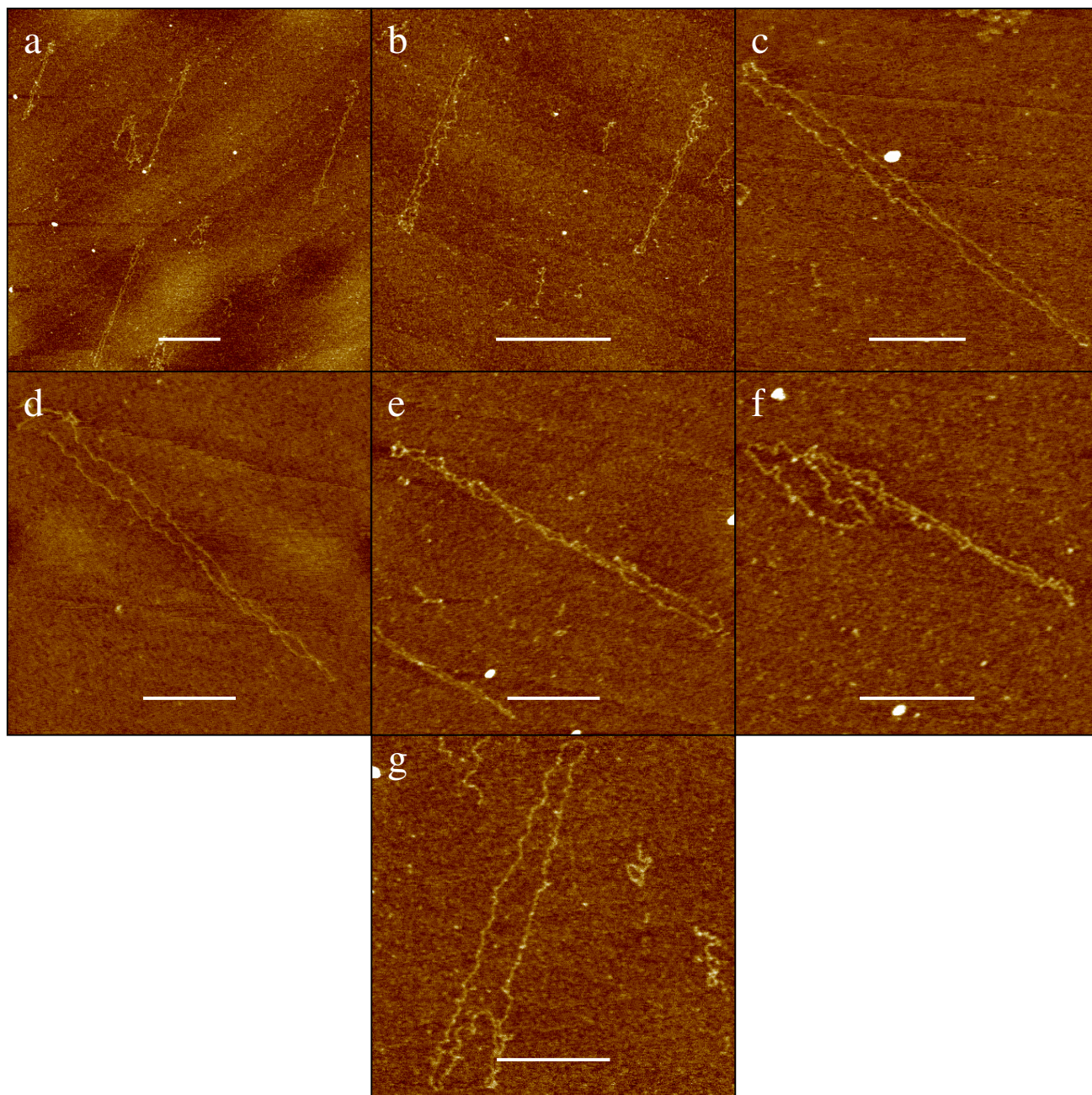


Figure S-1. Tapping mode AFM height images of extended single-stranded Φ X174 DNA molecules on mica surfaces. The white scale bar denotes 500 nm in (a) and (b), and 250 nm in (c)-(g). The height scale is 1.5 nm in (a), (b) and (g); the height scale is 1.2 nm for (c)-(f). Images (f) and (g) are examples of mostly extended single-stranded Φ X174 molecules whose full contour lengths can readily be traced.

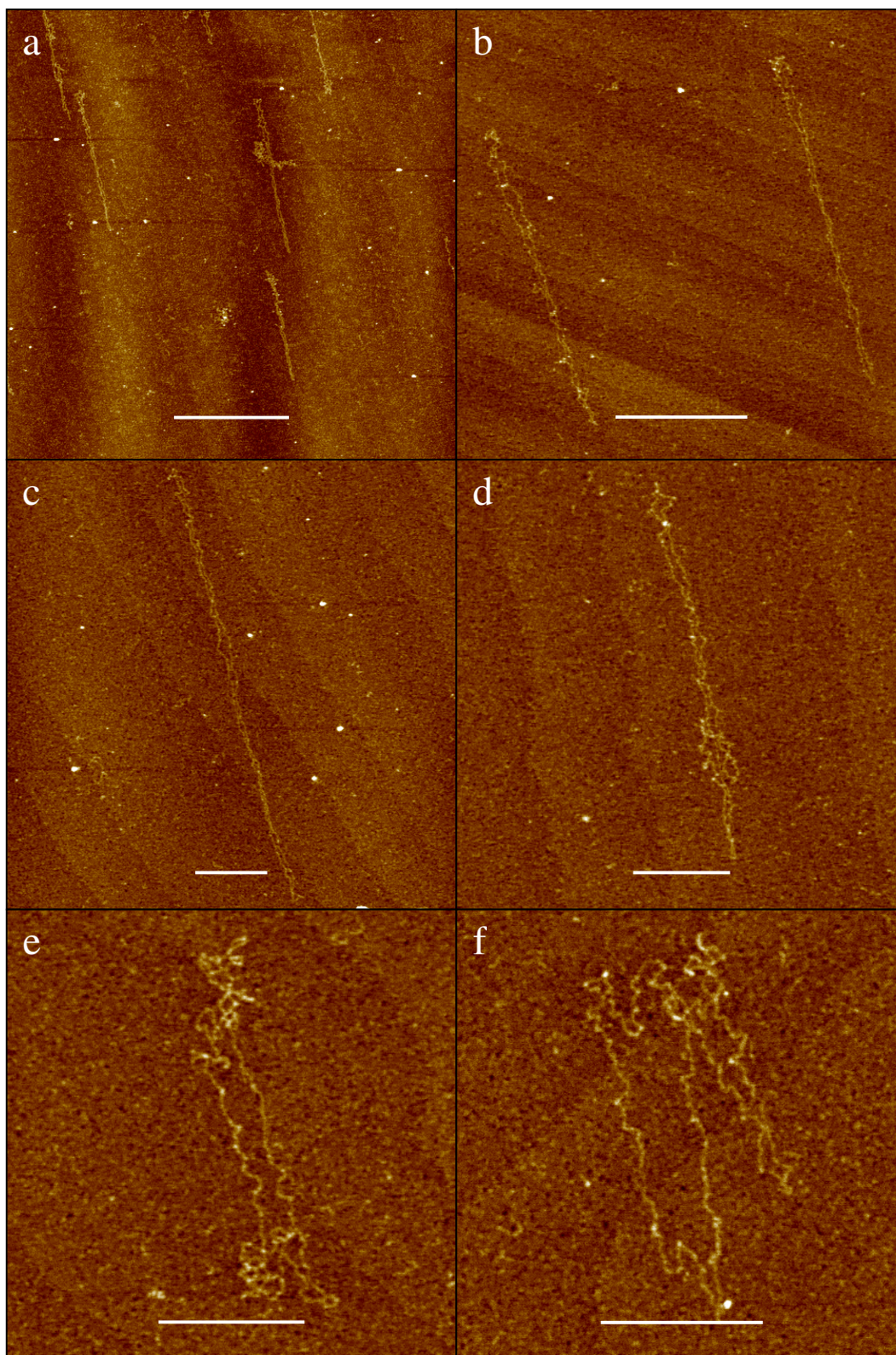


Figure S-2. Tapping mode AFM height images of extended single-stranded M13mp18 DNA molecules on mica surfaces. The white scale bar represents 1000 nm in (a), 500 nm in (b) and 250 nm in (c)-(f). The height scale is 2.0 nm in (a) and (b), and 1.5 nm in (c)-(f). Images (d)-(f) are examples of mostly extended single-stranded M13mp18 molecules with full contour lengths that can easily be traced.

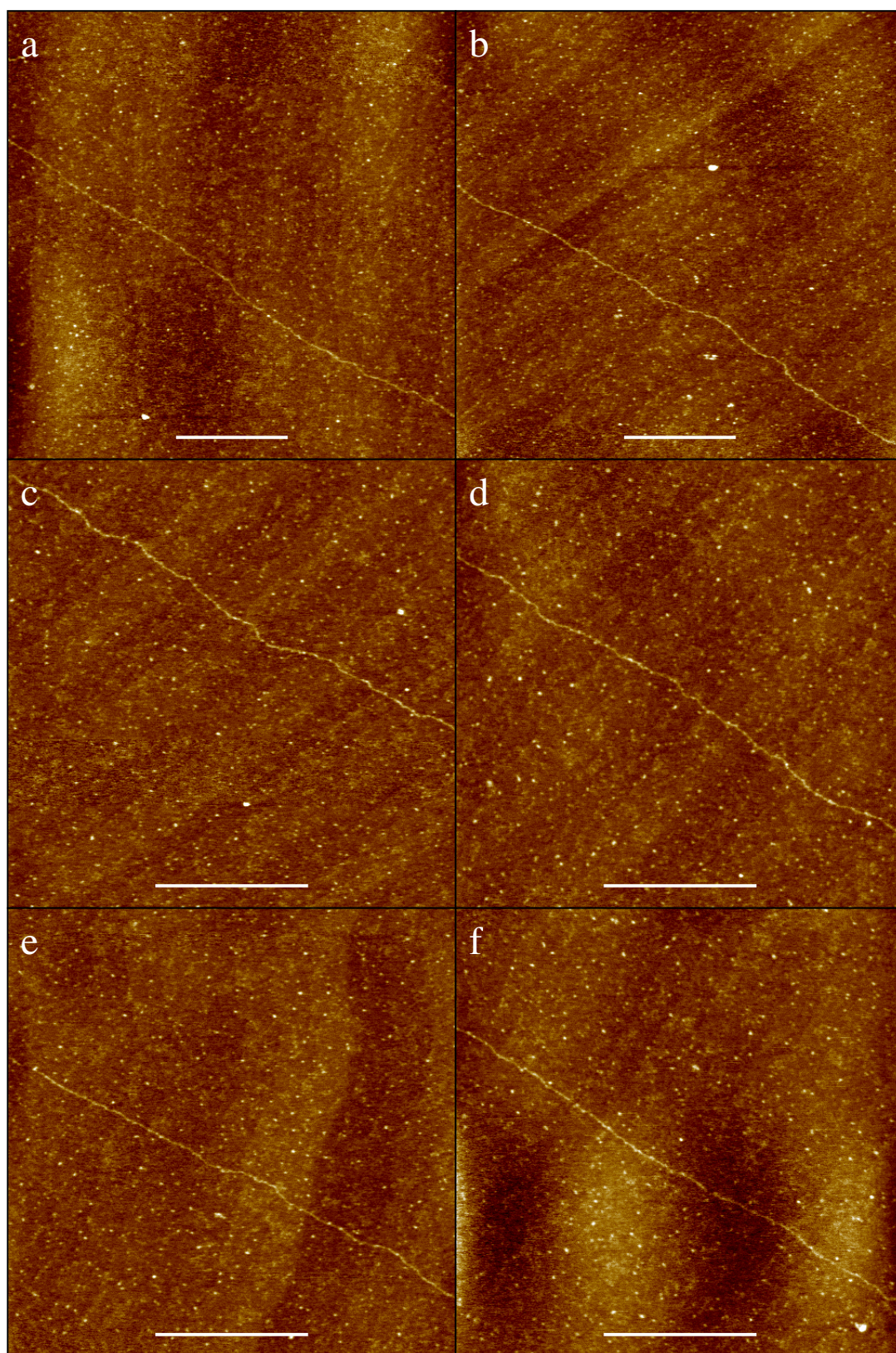


Figure S-3. Tapping mode AFM height images of segments of well-extended single-stranded λ DNA molecules on mica surfaces treated with 1 ppm poly-L-lys. The white bar indicates 500 nm, and the height scale is 1.5 nm for all images.

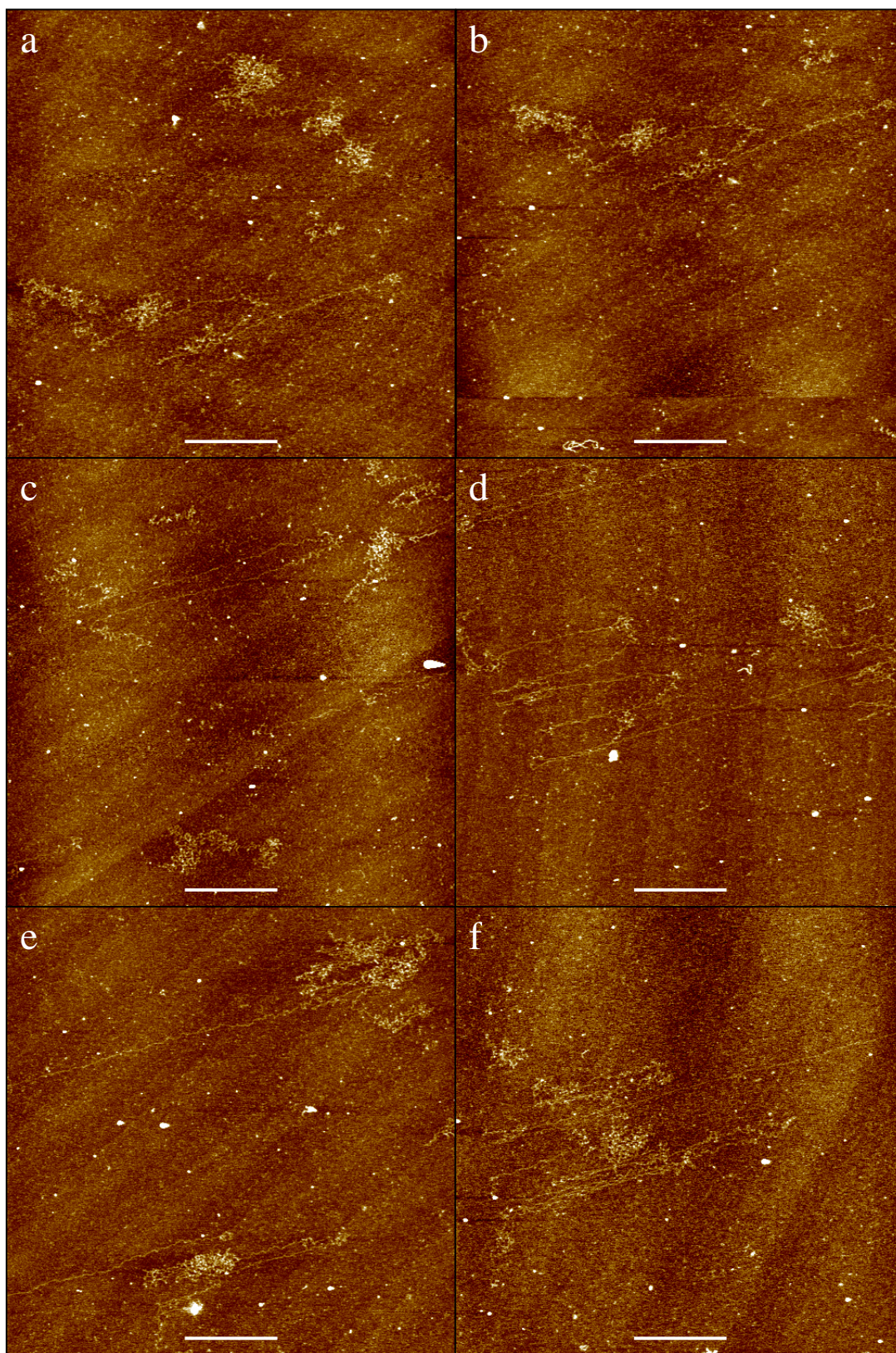


Figure S-4. Tapping mode AFM height images of segments of incompletely extended single-stranded λ DNA molecules on mica surfaces treated with 10 ppm poly-L-lys. The white bar indicates 500 nm, and the height scale is 1.5 nm for all images.

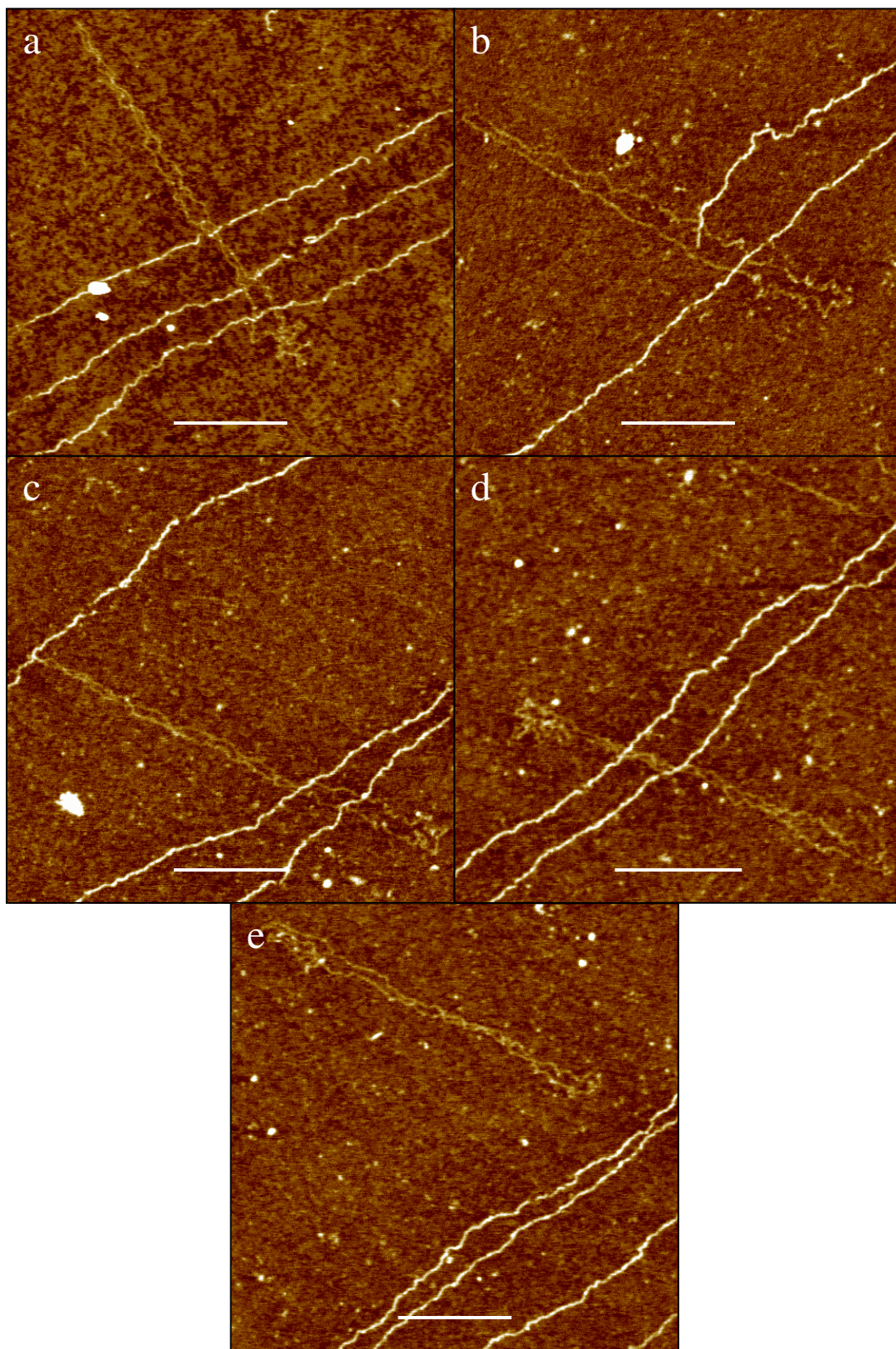


Figure S-5. Tapping mode AFM height images of mica surfaces with single-stranded Φ X174 DNA elongated in one direction and double-stranded λ DNA aligned perpendicularly. The white bar indicates 250 nm, and the height scale is 1.5 nm for all images.