

# Synergistic Effect of Copper Ion on the Reductive Dechlorination of Carbon Tetrachloride by Surface-Bound Fe(II) Associated with Goethite

*R. A. Maithreepala and Ruey-an Doong\**

Department of Atomic Science, National Tsing Hua University, Hsinchu, 30013, Taiwan.

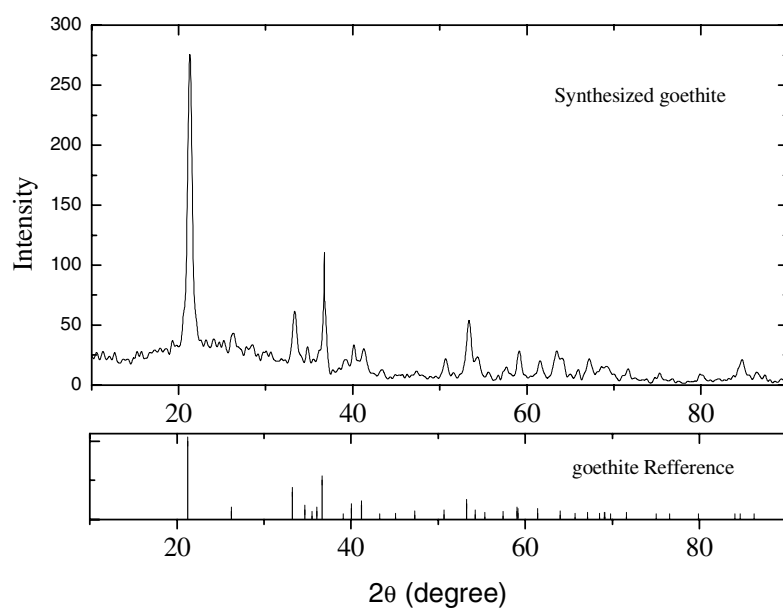


Figure S1. The XRD patterns of the synthesized goethite.

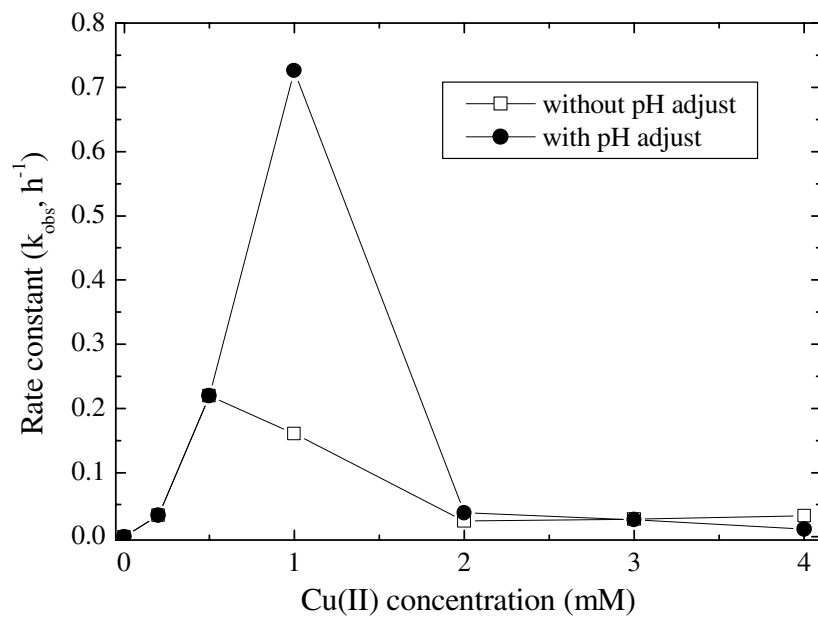


Figure S2. The rate constant for CT dechlorination as a function of Cu(II) concentration in solutions containing 3 mM Fe(II) with and without the pH adjustment. For pH adjustment, anoxic NaOH solution was used to adjust pH to  $7.0 \pm 0.1$ .