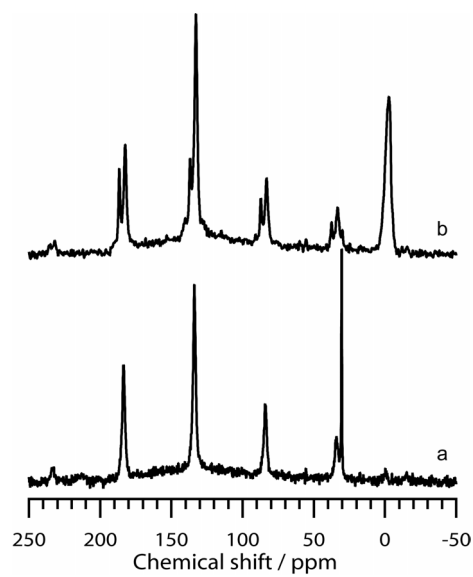
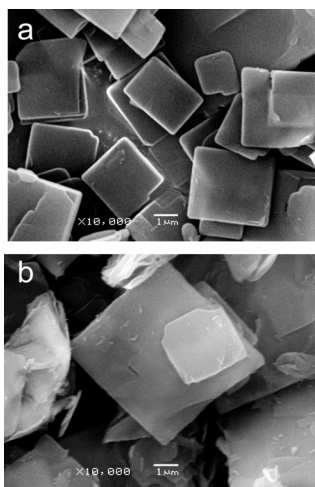


(Supporting Information)



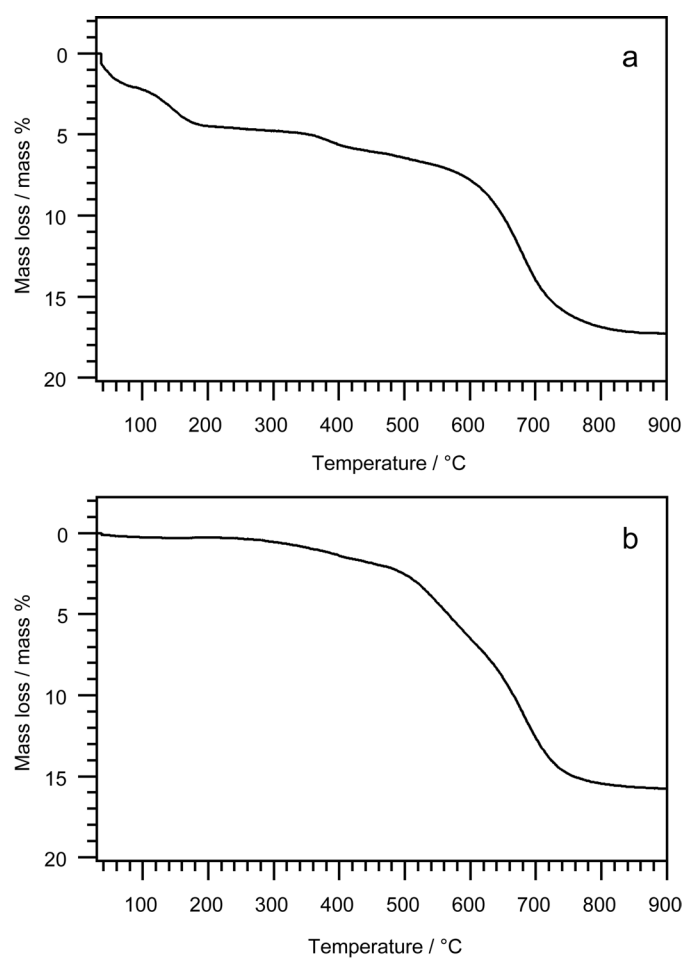
**Figure S1.**  $^{13}\text{C}$  CP/MAS NMR spectra of (a) **1b** and (b) **2b**.

(Supporting Information)



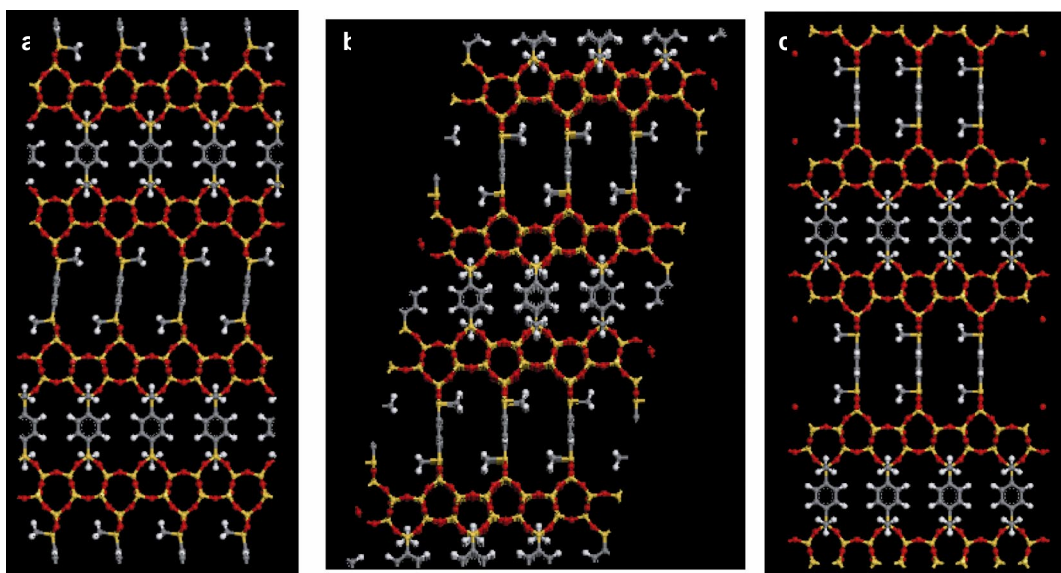
**Figure S2.** SEM images of (a) C<sub>16</sub>TMA-Oct and (b) **1b**.

(Supporting Information)



**Figure S3.** TG curves of (a) **1b** and (b) **2b**.

(Supporting Information)



**Figure S4.** Proposed structures of **2b**, (a) tetragonal ( $P4_122$ ), (b) monoclinic ( $C2/c$ ), and (c) orthorhombic cell ( $Ama2$ ).