

Supplemental Figures of “Identification of novel proteins involved in plant cell-wall synthesis based on protein-protein interaction data”

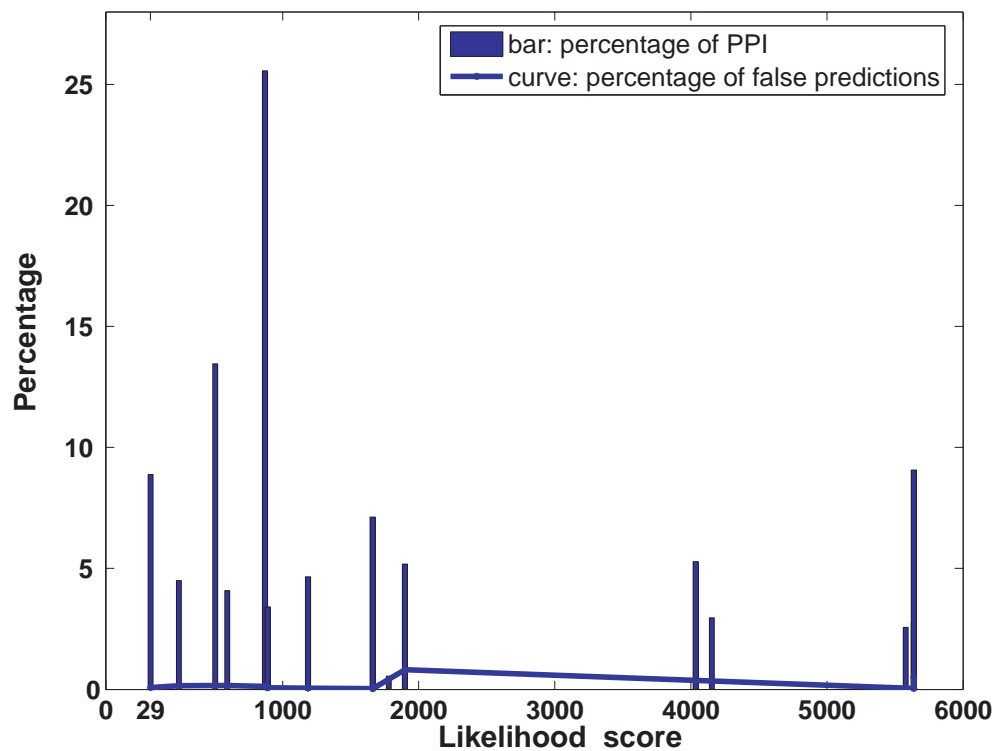
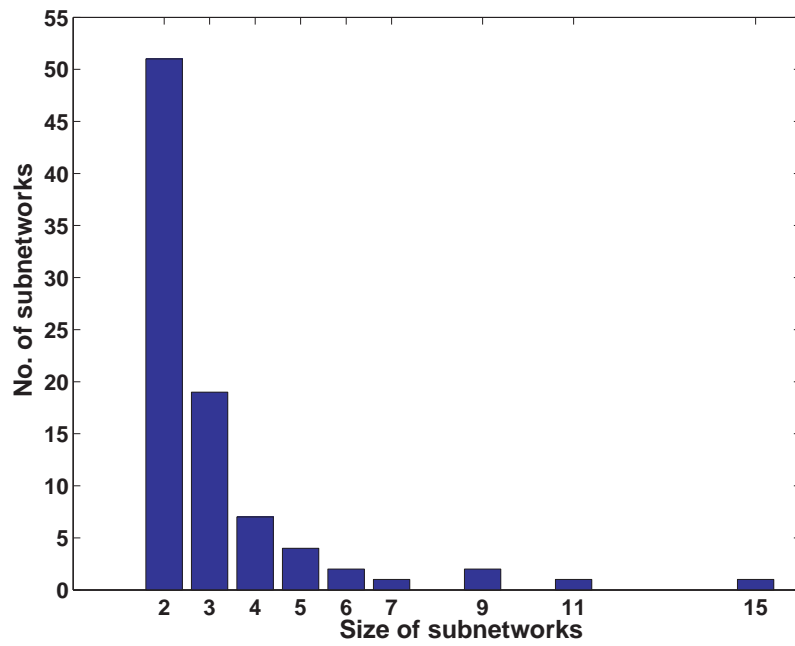
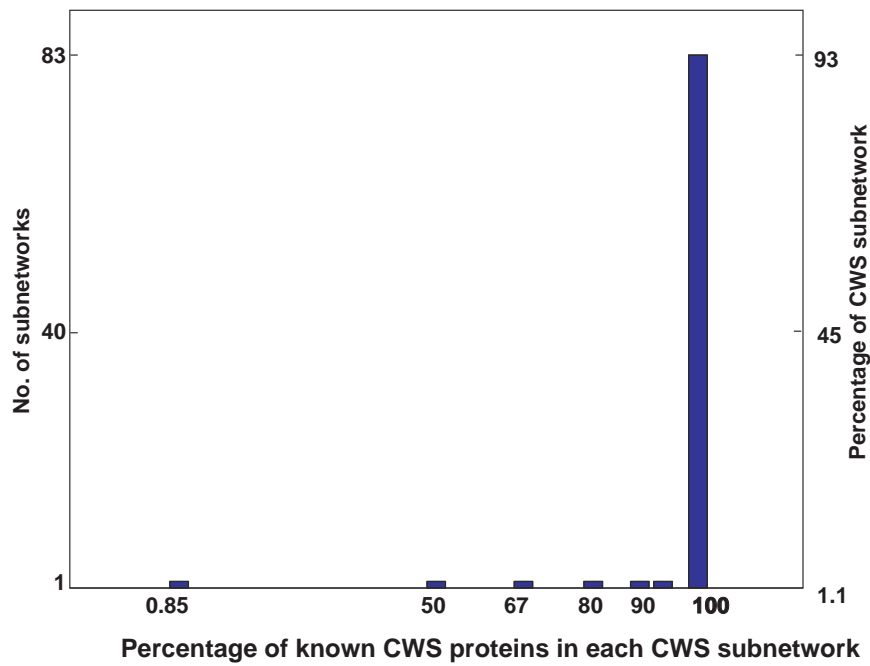


Figure 1S: The likelihood score distribution of PPIs for the whole network. The likelihood scores of all PPIs are over 29, larger than the zero which about 99.9% of PPIs in the negative set have the scores equal to.



(a)



(b)

Figure 2S: Size distributions of 89 CWS protein-containing subnetworks. (a) The size distribution of 89 subnetworks. The largest subnetwork containing 8,798 proteins is not shown because of its size being too large. In this figure, X-axis represents the number of proteins in each CWS protein-containing subnetwork and Y-axis stands for the number of CWS protein-containing subnetworks. (b) The percentage of known CWS proteins in each CWS protein-containing subnetwork versus the number (or percentage) of CWS subnetworks among the 89 subnetworks.