

Supplementary material 6

Figure 1. Phenology of ice nematodes captured at the main station (MS), except Photo (C) which was provided by Andreasen MH from eastern Spitsbergen. The photos show (A) an adult nematode found in March followed by (B) a mature female found in early April, after which (C) nematode egg clusters started to appear. These egg clusters started (D) to develop visible juveniles, which (E) hatched at the end of April/early May. © Vanessa Pitusi.

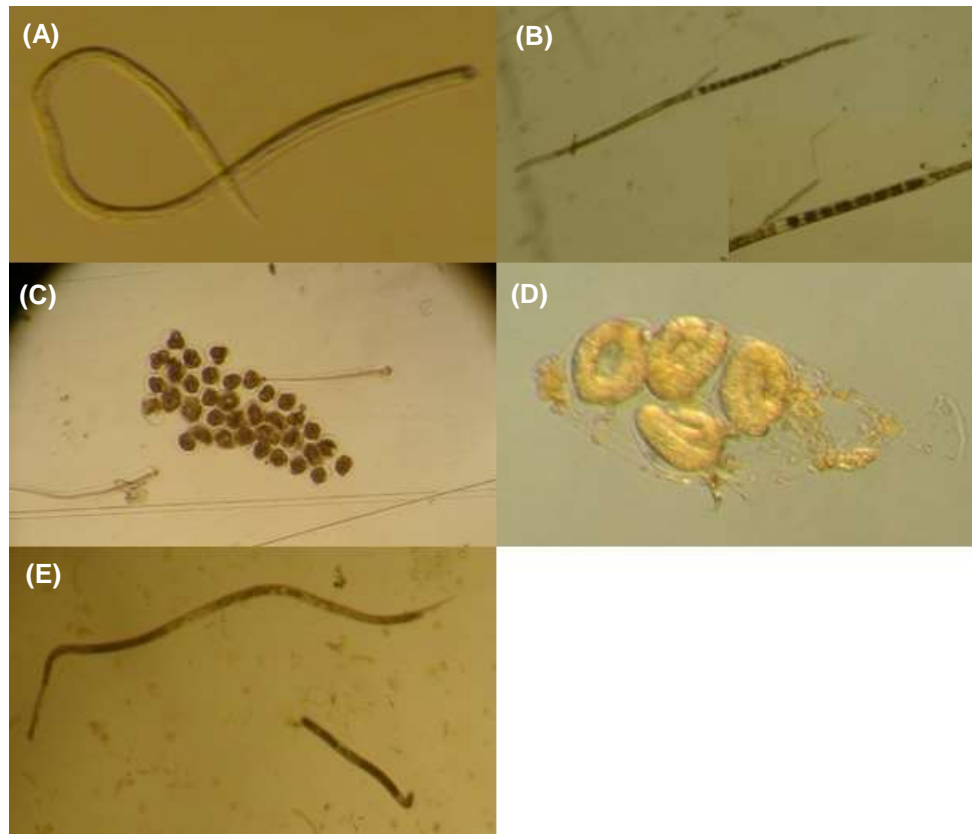


Figure 2. Box plot of the size distribution of sea ice nematodes in the temporal dataset from the main station (MS), in Van Mijenfjorden. Samples were collected from 03-Mar to 02-May-17.

