

Characterization of Genes for a Putative Hydroxycinnamoyl-Coenzyme A QuinateTransferase and *p*-Coumarate 3' Hydroxylase and Chlorogenic Acid Accumulation in Tartary Buckwheat

Yeon Bok Kim[†], Aye Aye Thwe[†], Ye Ji Kim[†], Xiaohua Li[†], Haeng Hoon Kim[‡], Phun Bum Park[§], Tastsuro Suzuki^{||}, Sun-Ju Kim[⊥], Sang Un Park^{†,*}

[†] Department of Crop Science, Chungnam National University, 79 Daehangno,
Yuseong-gu, Daejeon 305-764, Korea.

[‡] Department of Well-being Resources, Sunchon National University, 413 Jungangno,
Suncheon, Jeollanam-do, 540-742, Korea

[§] Department of Bioscience and Biotechnology University of Suwon, San 2-2 Wauri
Bongdameup, Hwasung 445-743, Korea

^{||} National Agricultural Research Center for Hokkaido Region, Shinsei, Memuro, Kasai-
gun, Hokkaido, 082-0081, Japan

[⊥] Department of Bio Environmental Chemistry, Chungnam National University, 79
Daehangno, Yuseong-Gu, Daejeon, 305-754, Korea

* To whom correspondence should be addressed

S.U. Park

Department of Crop Science, College of Agriculture & Life Sciences, Chungnam
National University, 79 Daehangno, Yuseong-gu, Daejeon 305-764, Korea.

Phone: +82-42-821-5730 Fax: +82-42-822-2631. E-mail: supark@cnu.ac.kr



Figure 1. Alignment of the deduced FtHQT sequence with other plant sequences.

Sequences are from AtHCT (*Arabidopsis thaliana*, ABH04595), HcHCT (*Hibiscus cannabinus*, AFN85668), CaHQT (*Coffea arabica*, CAJ40778), PtHQT (*Populus trichocarpa*, ACC63882), CcHQT1 (*Cynara cardunculus*, AM690438), NtHQT (*Nicotiana tabacum*, CAE46932), FtHQT (*Fagopyrum tataricum*, KC404851). Red boxes indicate the conserved motifs for the acyltransferase family: HHAADG and DFGWG. Black bars indicate conserved amino acid residues for HQT.

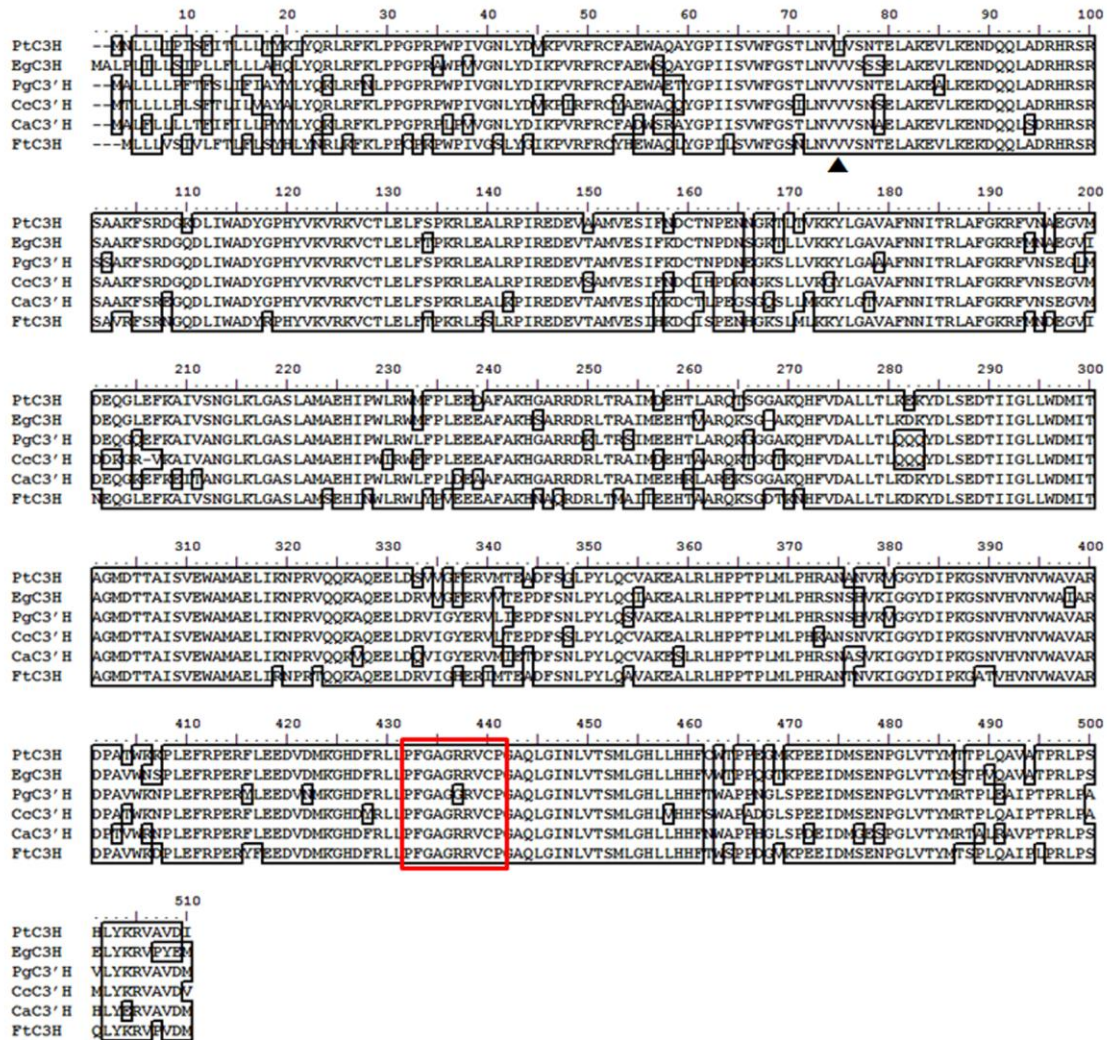


Figure 2. Alignment of the deduced FtC3H sequence with other plant sequences.

Sequences are from PtC3H (*Populus trichocarpa*, ACC63870), EgC3H (*Eucalyptus globules*, ADG08112), PgC3'H (*Platycodon grandiflorus*, AEM63674), CcC3'H (*Cynara cardunculus*, ACO25188), CaC3'H (*Coffea arabica*, AFP49813), FtC3H (*Fagopyrum tataricum*, KC404850). Red box indicates heme-binding sequence PFGXGRRXCX of P450s and black triangle shows valin.