

Figure S1

Calibration plot of the SEC column.

The elution volumes and molecular weights (common logarithms) of protein standards (rHuHF (506,000), gamma globulin (158,000), bovine serum albumin (BSA) (66,300), ovalbumin (42,700), and chymotripsinogen A (25,700) were plotted. The regression line and its equation of the plot was also shown.

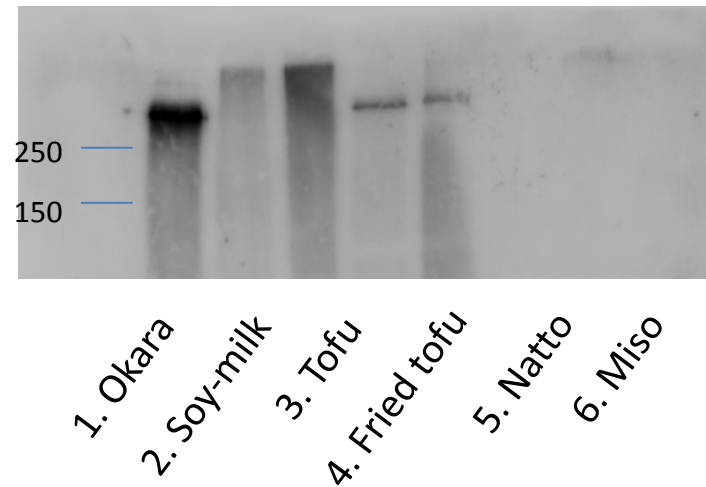


Figure S2

Immuno blot analysis of soy-derived food extracts after non-reducing SDS-PAGE without heat treatment. Ferritin was visualized by the rSFER1 specific antiserum. Lane 1: Soy-seed debris (*Okara*), lane 2: Soymilk. lane 3: Tofu, lane 4: Fried tofu, lane 5: *Natto*, and lane 6: *Miso*.

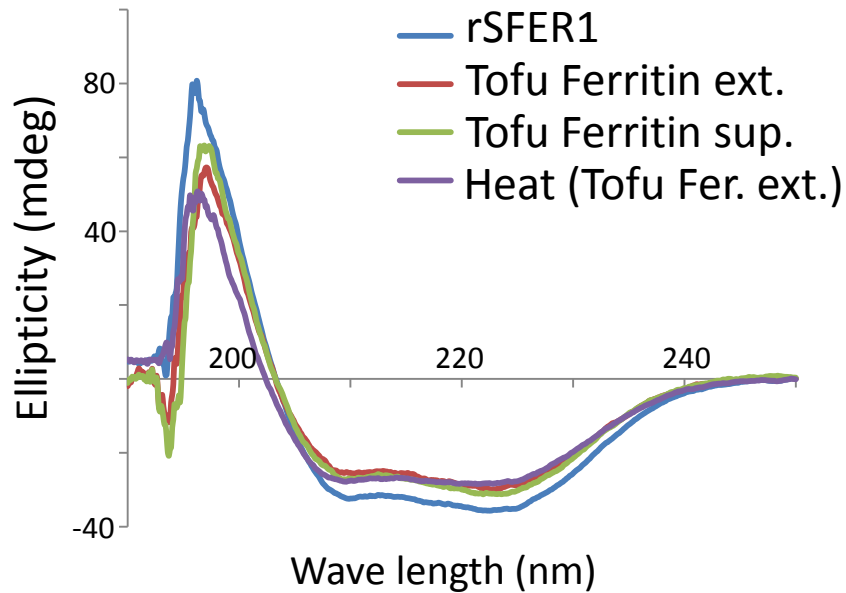


Figure S3

CD spectra of purified ferritin from tofu extract after heat denaturation experiment

CD spectrum of ferritin from the tofu extract was obtained after heat treatment to 90° C (Fig.3b). Molar ellipticity in far UV region was recorded by scanning the wave-length from 250 to 190 nm. The CD spectra shown in Fig. 3a were also shown in this figure for comparison.