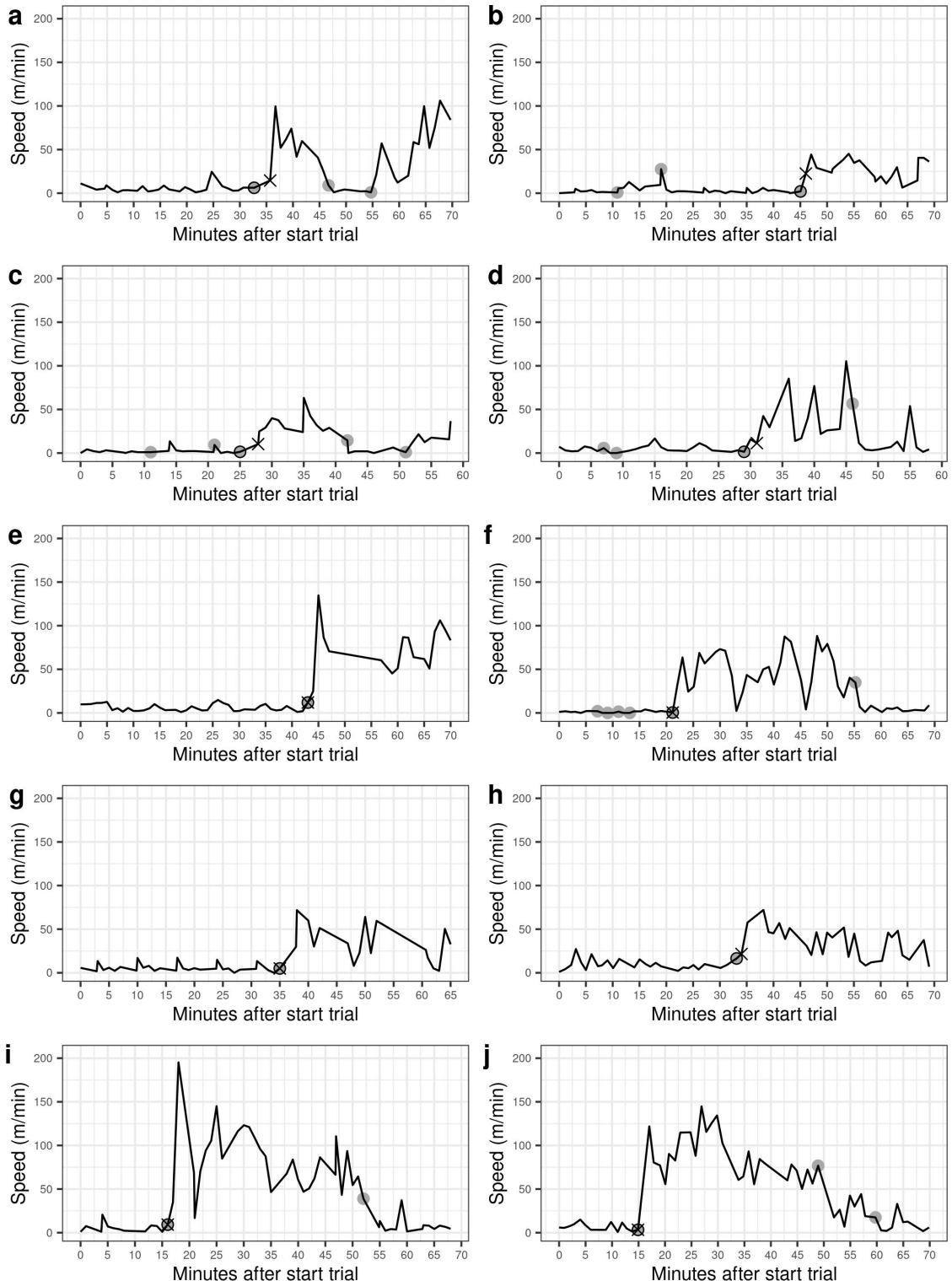


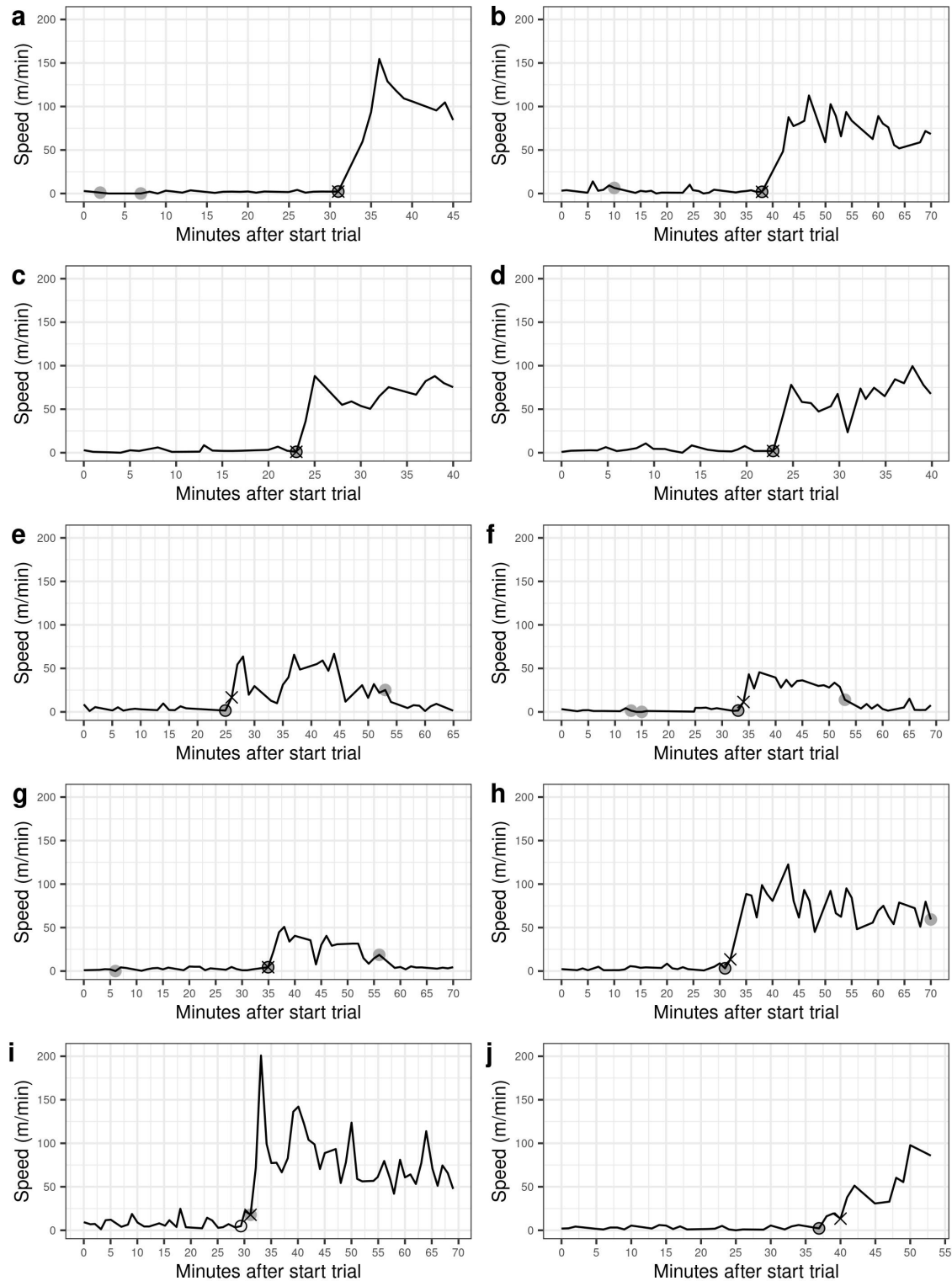
Supplementary Presentation 4

Detection of flight initiation of wolves during 35 experimental human approach trials using three alternative methods: Upper Control Limit (UCL, black X), and changepoint analysis with either MBIC penalty (black open circles) or AIC penalty (grey closed circles). Panels 1-3 include trials where all methods as well as visual inspection of the GPS positions indicated a flight. Panel 4 includes trials where visual inspection did not indicate a flight. Panel 5 includes trials where visual inspection indicated a flight that was not detected using changepoint analysis with MBIC penalty.

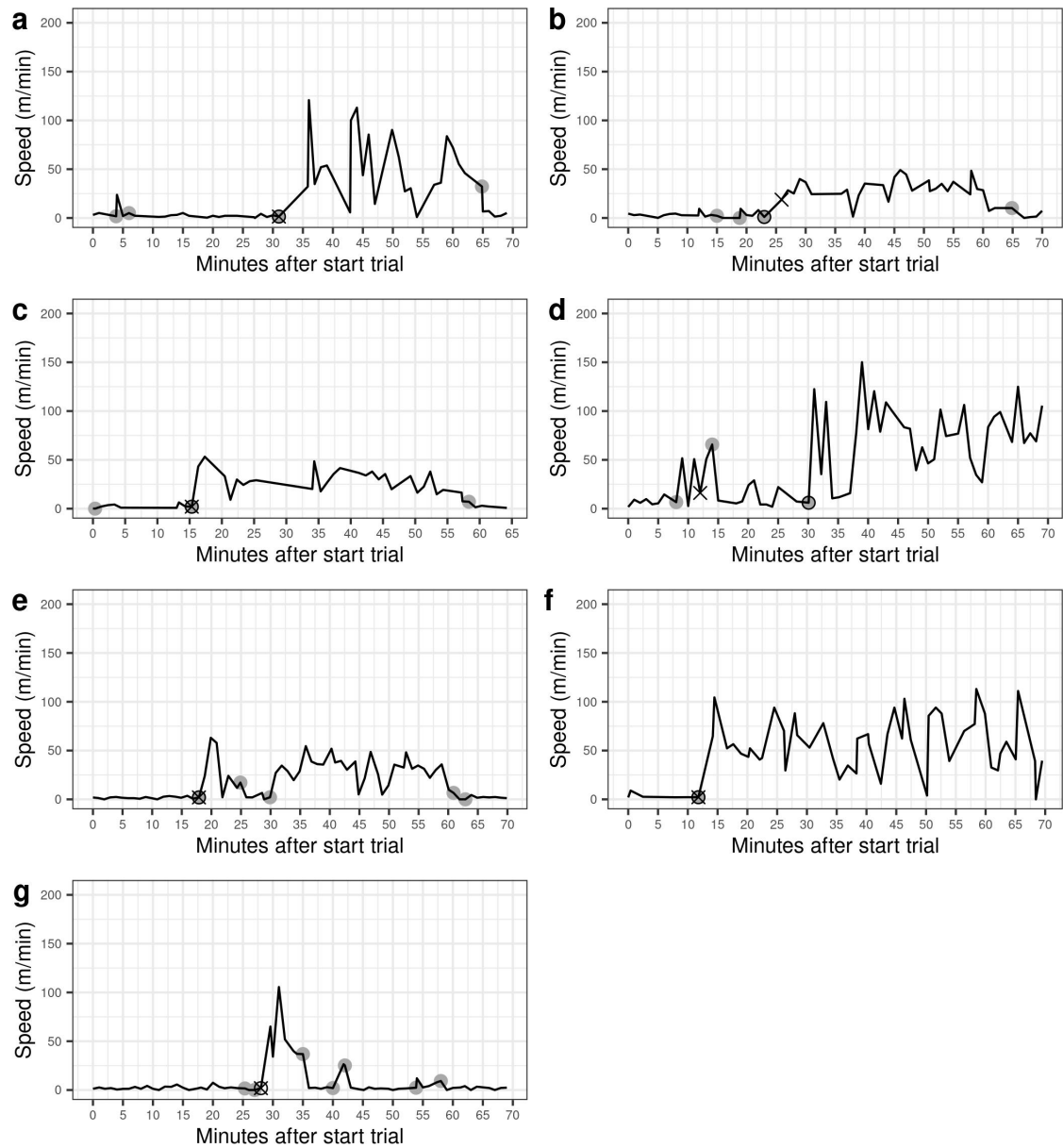
Panel 1 - Flights



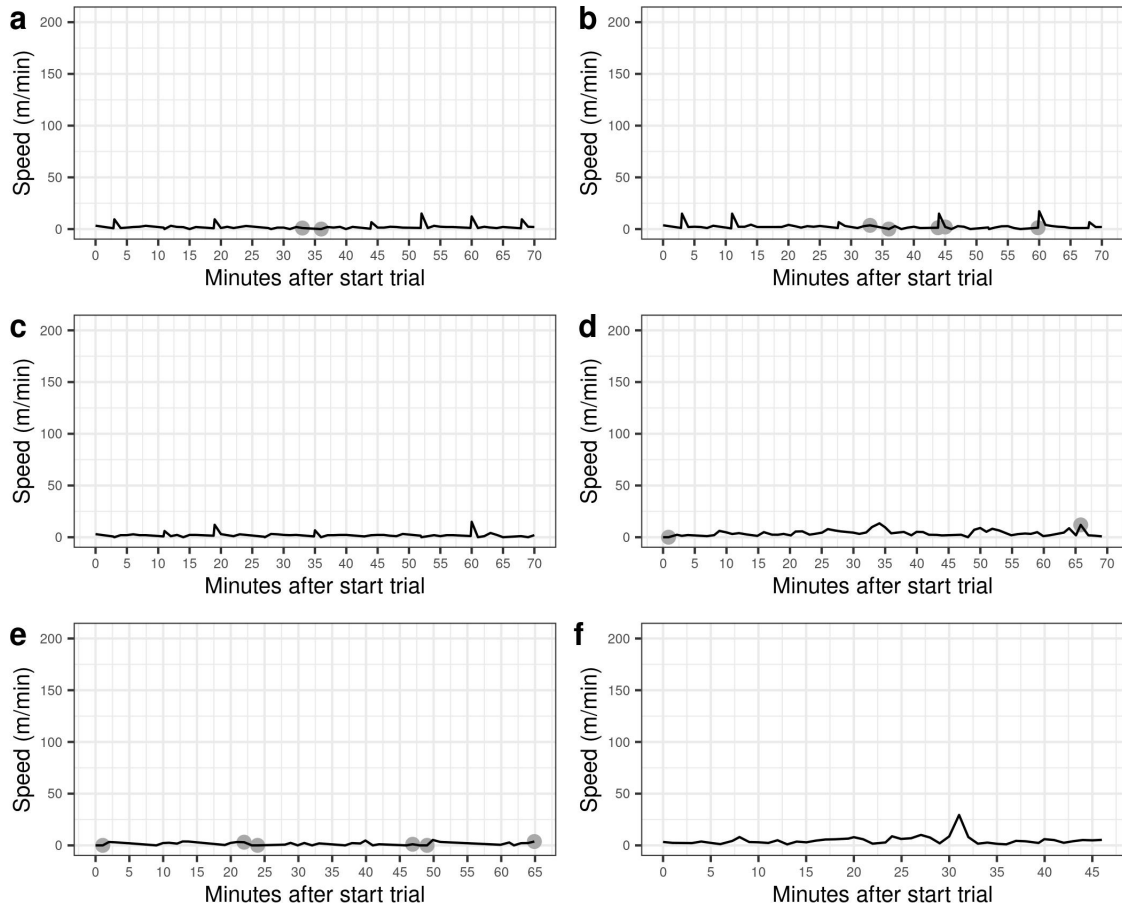
Panel 2 - Flights



Panel 3 - Flights



Panel 4 - No flights



Panel 5 - Flights with AIC only

