

Figure 1. SEM plate of diagnostic sclerites from *Paramuricea* sp. 1. Two thornscales from the calyx are presented on the left, four warted spindles from the outer coenenchyme are presented on the right. Scale bar in lower left corner represents 500 microns.

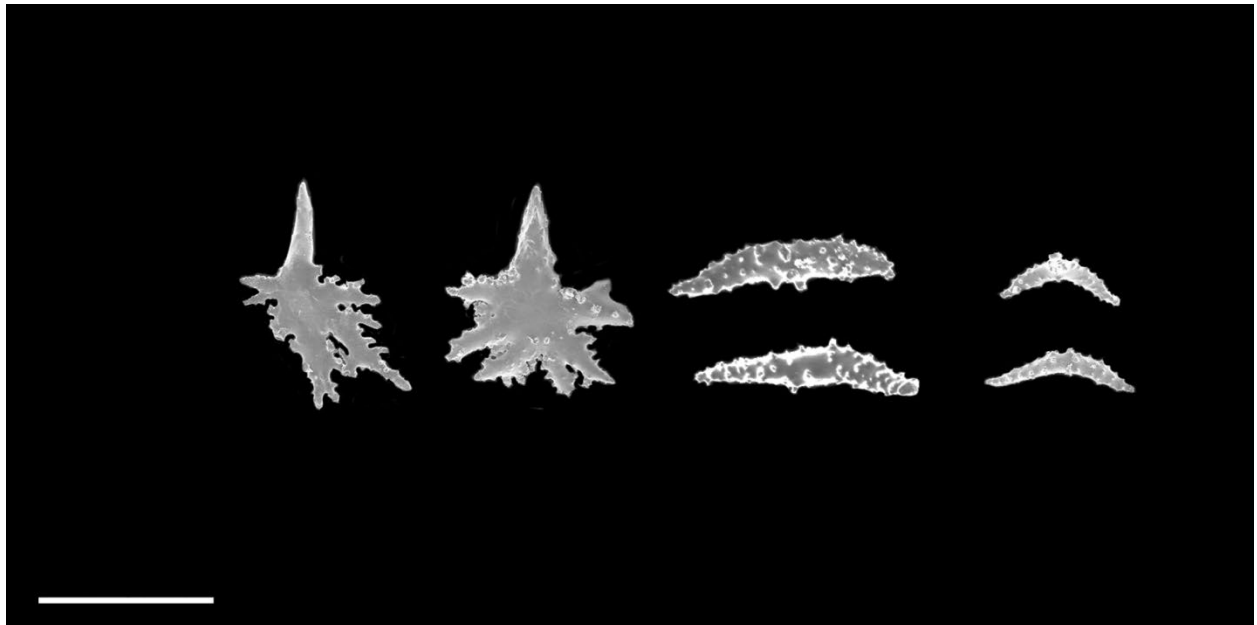


Figure 2. SEM plate of diagnostic sclerites from *Paramuricea* sp. 2. Two thornscales from the calyx are presented on the left, two warted spindles and two small curved rods from the outer coenenchyme are presented on the right. Scale bar in lower left corner represents 500 microns.

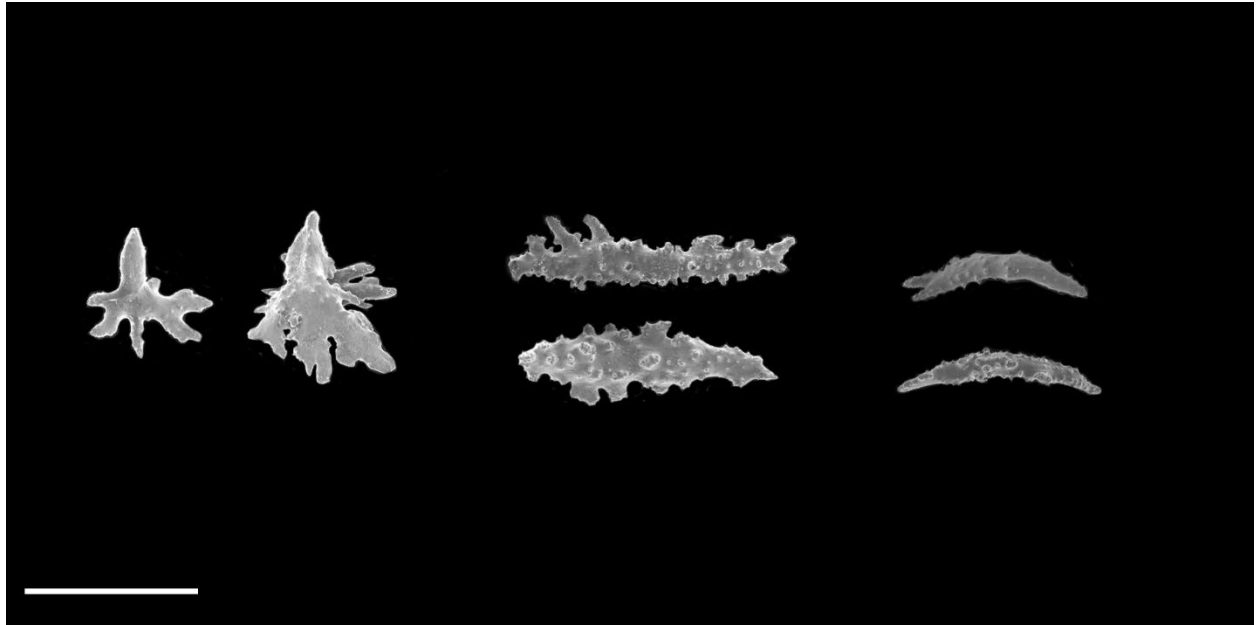


Figure 3. SEM plate of diagnostic sclerites from *Paramuricea* sp. 3. Two thornscales from the calyx are presented on the left, and four warted spindles from the outer coenenchyme are present on the right (two branched, two unbranched). Scale bar in lower left corner represents 500 microns.

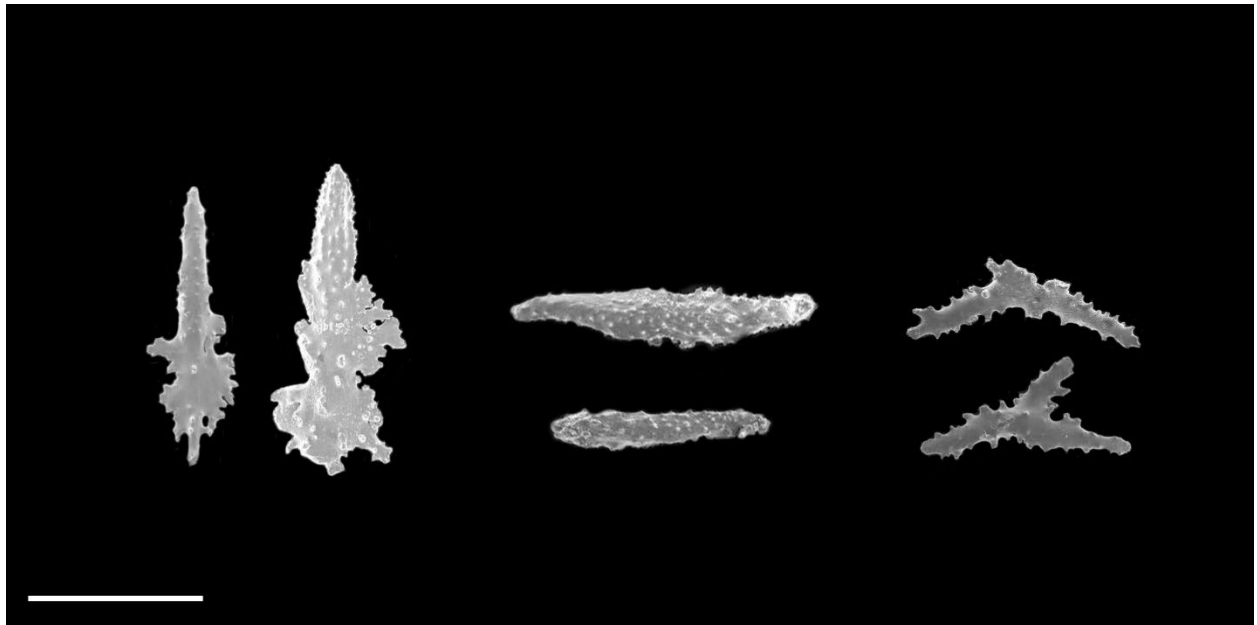


Figure 4. SEM plate of diagnostic sclerites from *Paramuricea* sp. 4. Two thornscales from the calyx are presented on the left, two warted spindles and two rods from the outer coenenchyme are presented on the right. Scale bar in lower left corner represents 500 microns.

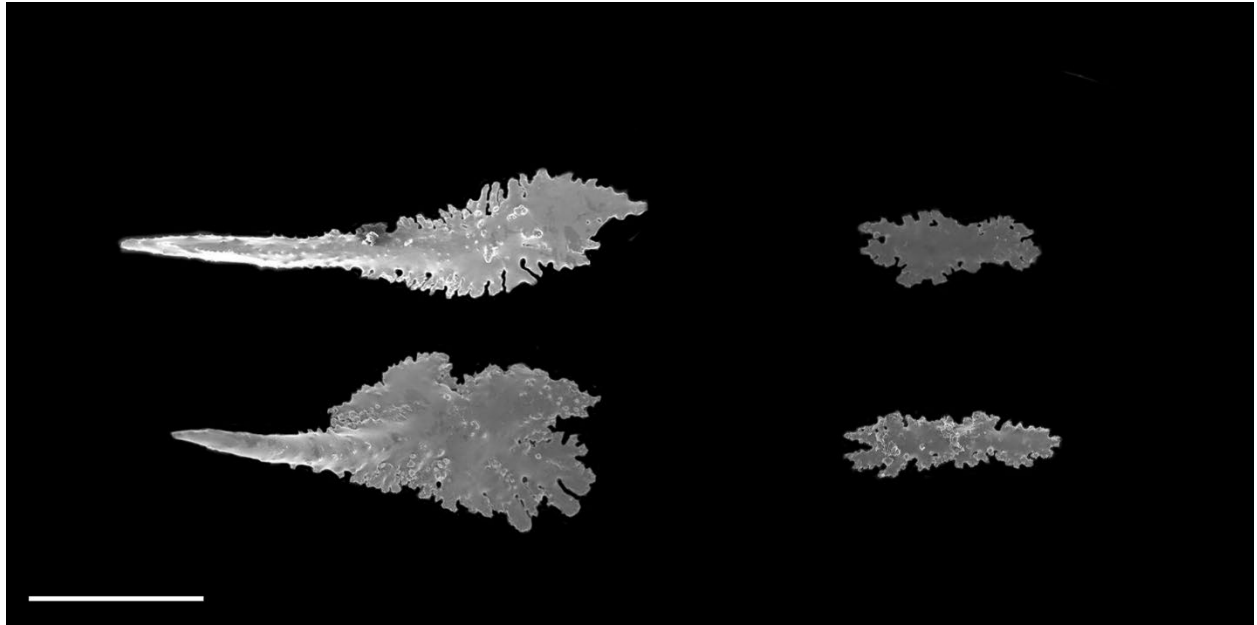


Figure 5. SEM plate of diagnostic sclerites from *Paramuricea* cf. *biscaya*. Two thornscales from the calyx are presented on the left, two lacinated plates from the outer coenenchyme are presented on the right. Scale bar in lower left corner represents 500 microns.

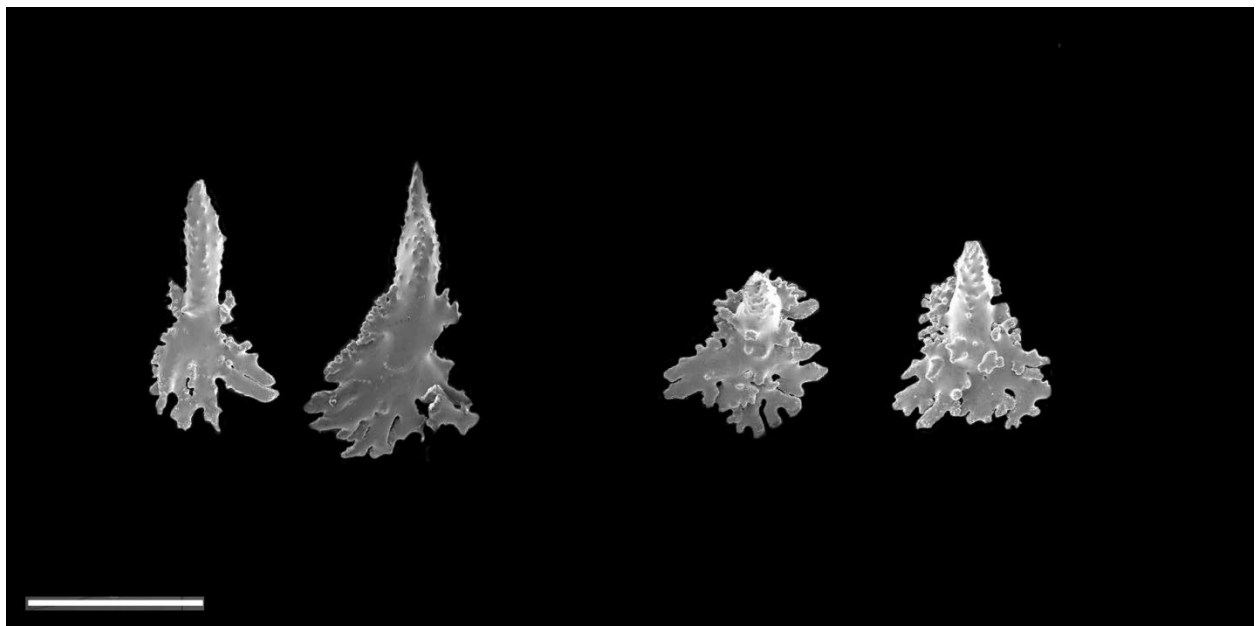


Figure 6. SEM plate of diagnostic sclerites from *Paramuricea* aff. *biscaya*. Two thornscales from the calyx are presented on the left, two lacinated plates with rounded projection from the outer coenenchyme are presented on the right. Scale bar in lower left corner represents 500 microns.



Figure 7. SEM plate of diagnostic sclerites from *Paramuricea cf. placomus*. Two hornscales from the calyx are presented on the left, two spindles from the outer coenenchyme are presented on the right. Scale bar in lower left corner represents 500 microns.

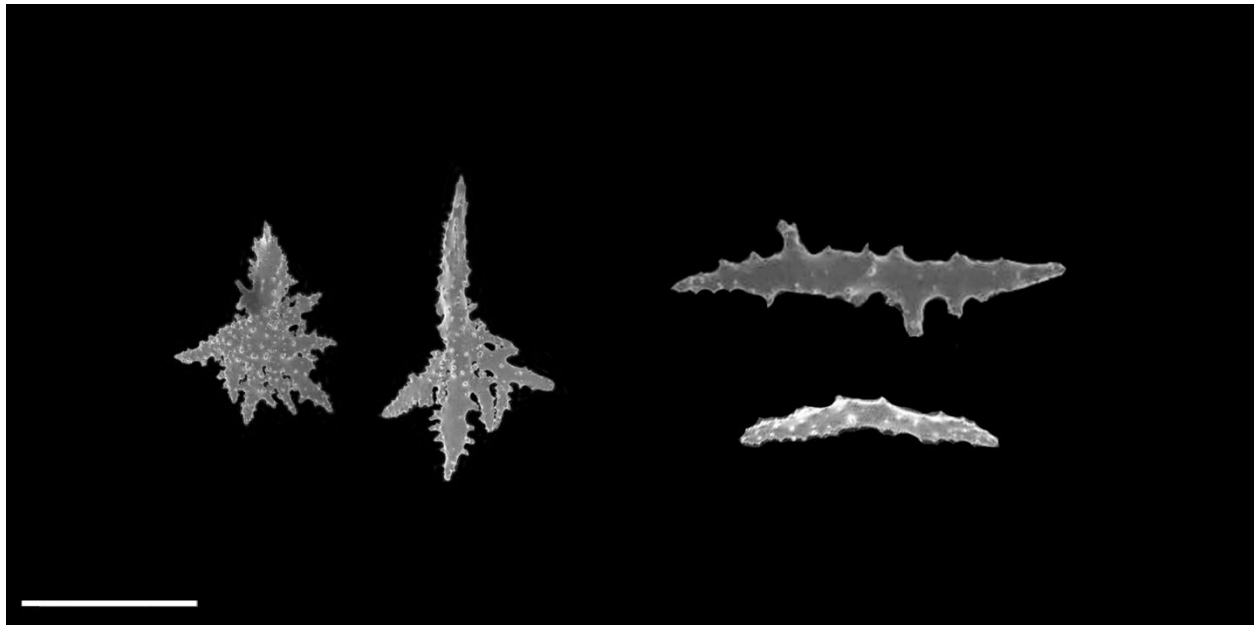


Figure 8. SEM plate of diagnostic sclerites from *Paramuricea cf. placomus* (Gulf of Mexico variant). Two thornscales from the calyx are presented on the left, two warted spindles from the outer coenenchyme are presented on the right. Scale bar in lower left corner represents 500 microns.