

Figure 2 C- Uncropped/unmerged Images of Insulin and Glucagon

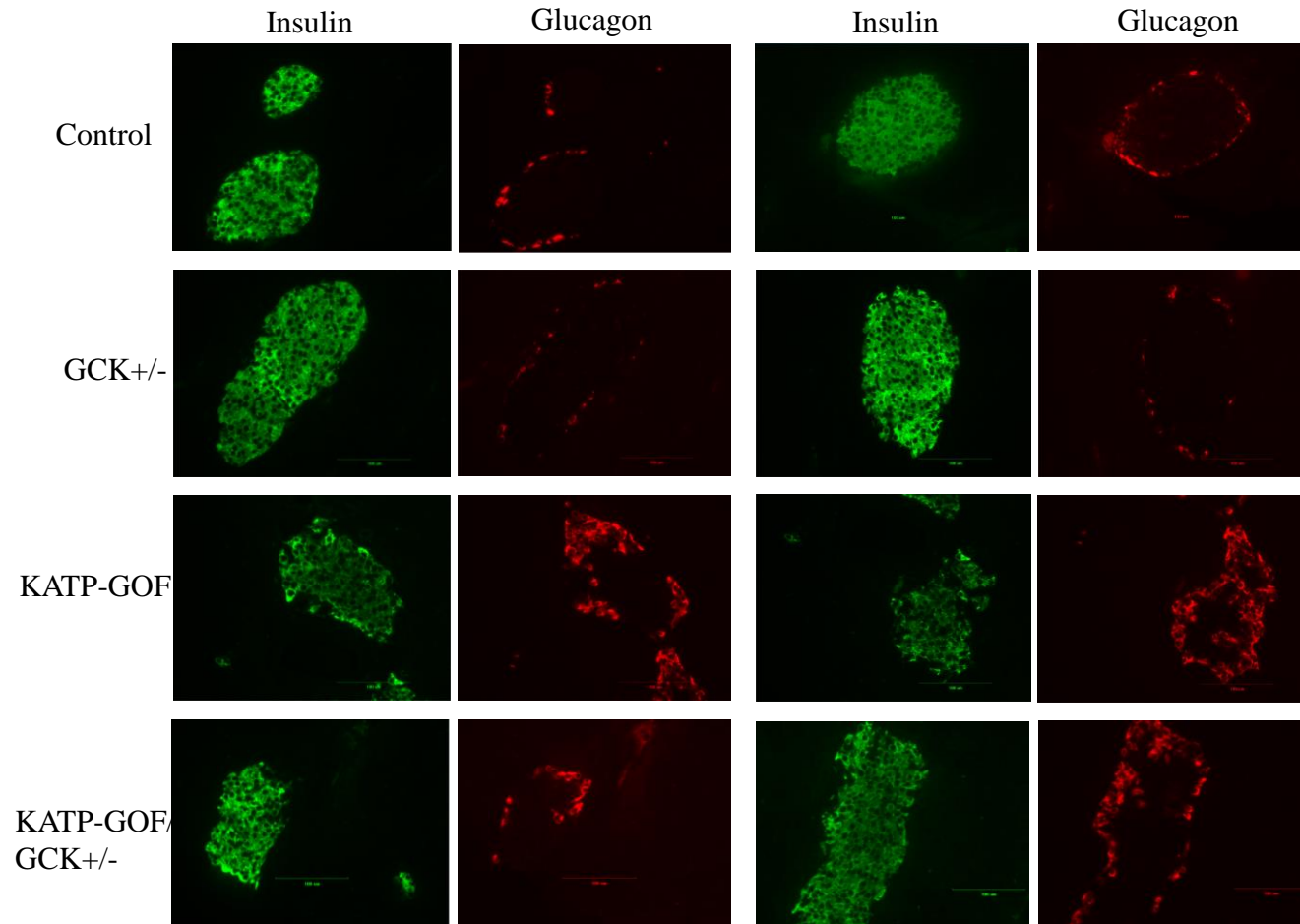


Figure 2 I- Uncropped /unmerged mages of Insulin and ALDH1A3

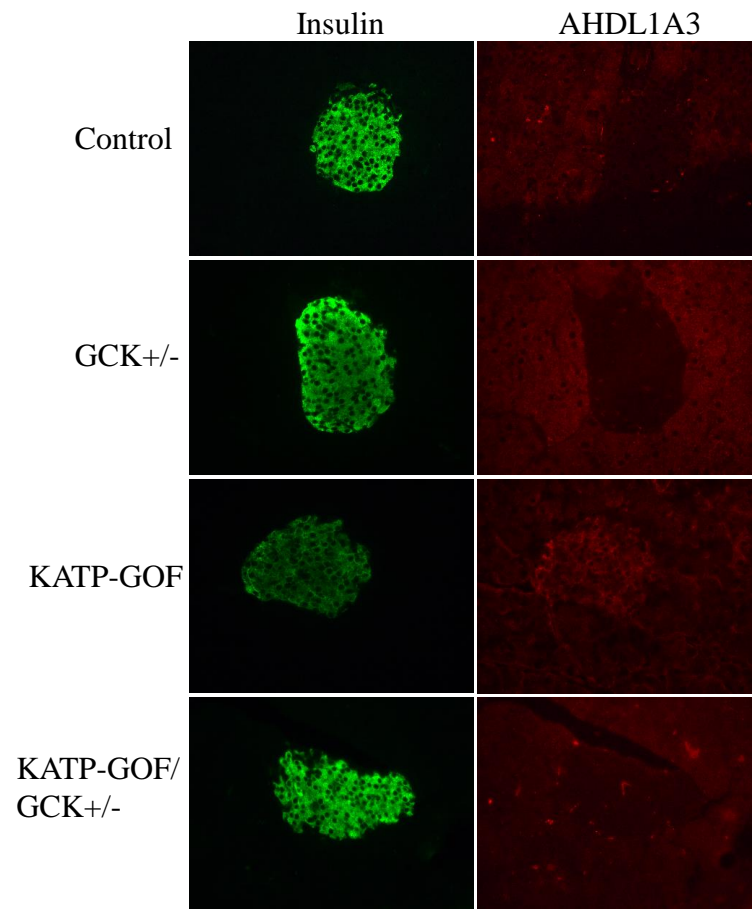
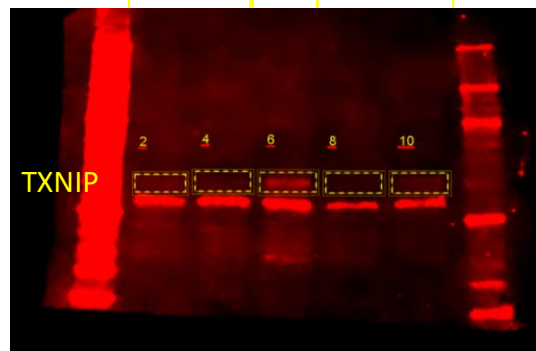
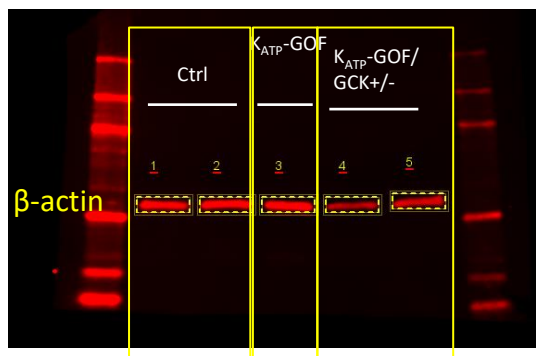
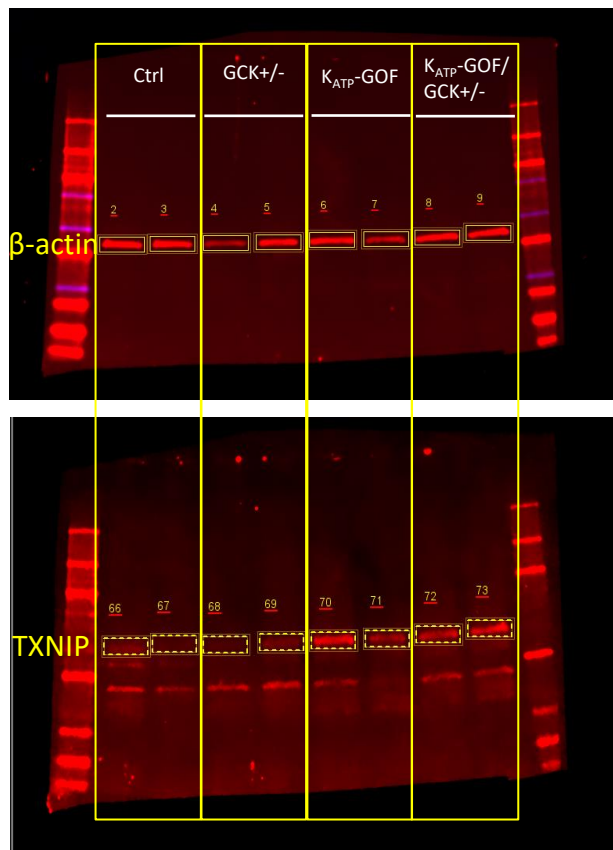
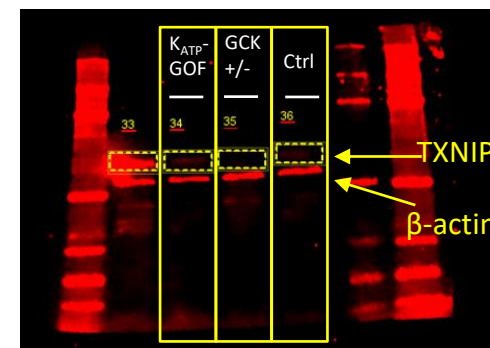


Figure 2 J- Uncropped images of western blots for TXNIP



K_{ATP}-GOF sample was combined from 2 mice (not enough islet number from each mouse to run separated)



First band is a K_{ATP}-GOF with strong background, not included in the analysis. Second K_{ATP}-GOF sample was combined from 2 mice (not enough islet number from each mouse to run separated)

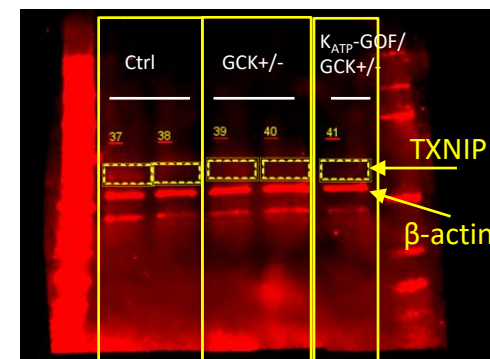


Figure 2 J- Uncropped images of western blots for TXNIP

