

INCLUSIVE AND ACCESSIBLE SCIENTIFIC COMPUTING IN THE JUPYTER ECOSYSTEM

ISABELA PRESEDO-FLOYD (she/her)

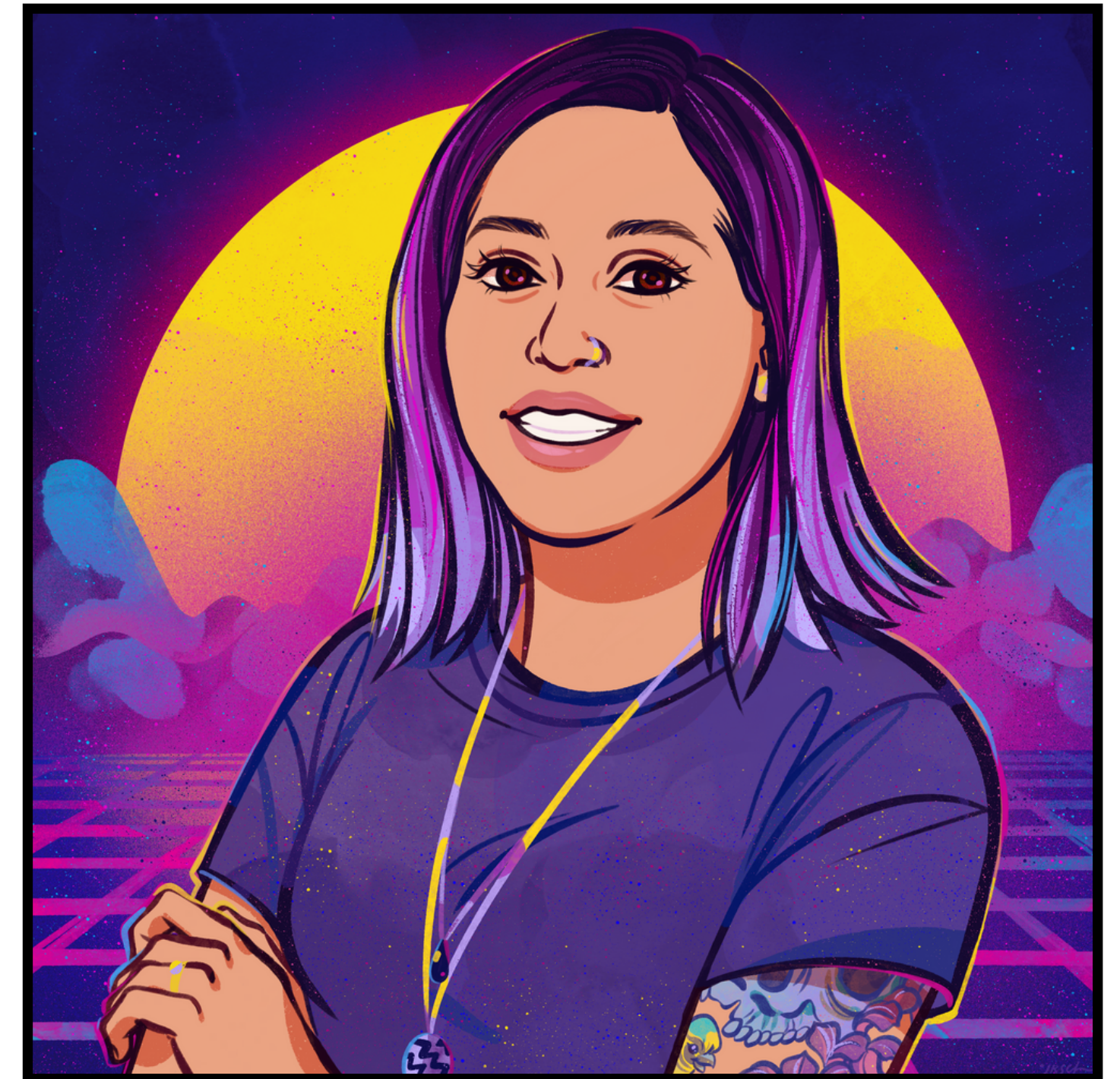
TANIA ALLARD (she/her)

QUANSIGHT LABS



TANIA ALLARD

- Co-Director Quansight Labs
- PSF board of directors
- PyLadies Global Council member



ISABELA PRESEDO-FLOYD

- UX/UI Designer at Quansight Labs
- Jupyter Accessibility
- Accessibility and community nerd



THE TEAM



ISABELA PREEDO-FLOYD

UX/UI Design



TONY FAST

Community and Outreach



GABRIEL FOUASNON

FrontEnd Development

TABLE OF CONTENTS

.01

INTRODUCTION

Introducing concepts and
acquiring a common language

.02

FRAMING

Accessibility within the
Jupyter Ecosystem context

.03

ACTION

Our project and methodology

HOW MANY TIMES ...

**DO YOU NAVIGATE/VISIT WEBSITES
ON A NORMAL WORK DAY?**

HOW OFTEN...

**DO YOU USE A MOUSE ON A NORMAL
WORK DAY?**

HOW OFTEN...

CAN YOU DO YOUR WORK FROM A

LAPTOP OR EVEN YOUR PHONE

WITHOUT ASSISTIVE TECHNOLOGY?

HOW OFTEN...

**DO YOU WORK WITH JUPYTER
NOTEBOOKS?**

ACCESSIBILITY 101

BUILDING A COMMON VOCABULARY

ACCESSIBILITY DEFINED

1.The qualities that make an

experience **open to all**

2.A professional discipline aimed at

achieving No 1

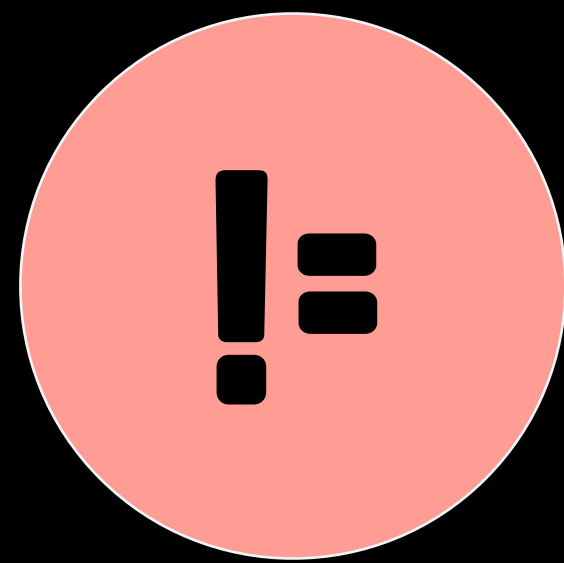


DISABILITY

Disability happens **at the points of interaction** between a person and society or technology.

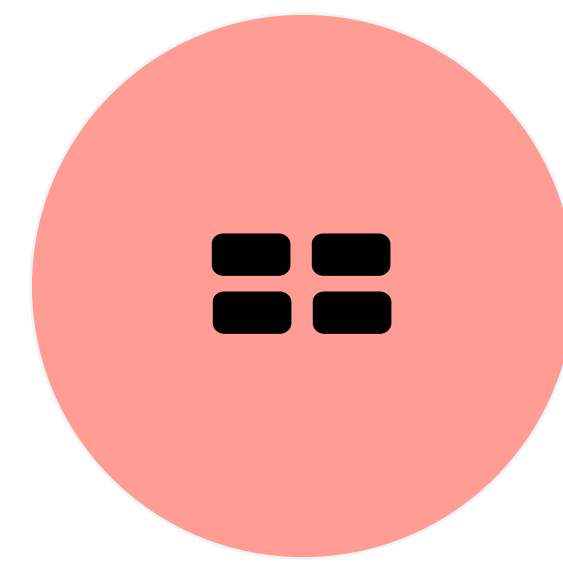
Physical, cognitive, and social exclusion is the **result of mismatched interactions.**

DISABILITY



**PERSONAL
HEALTH
CONDITION**

DISABILITY



**MISMATCHED
HUMAN
INTERACTIONS**

DISABILITY CAN BE...

PERMANENT



One arm

TEMPORARY



Arm injury

SITUATIONAL



New parent

Illustration taken from Microsoft's inclusive design toolkit.
For in depth explanations of permanent, temporary and situational see:

<https://www.microsoft.com/design/inclusive/>

DISABILITY CAN BE...

PERMANENT



Permanent 26K

TEMPORARY



Temporary 13M

SITUATIONAL



Situational 8M

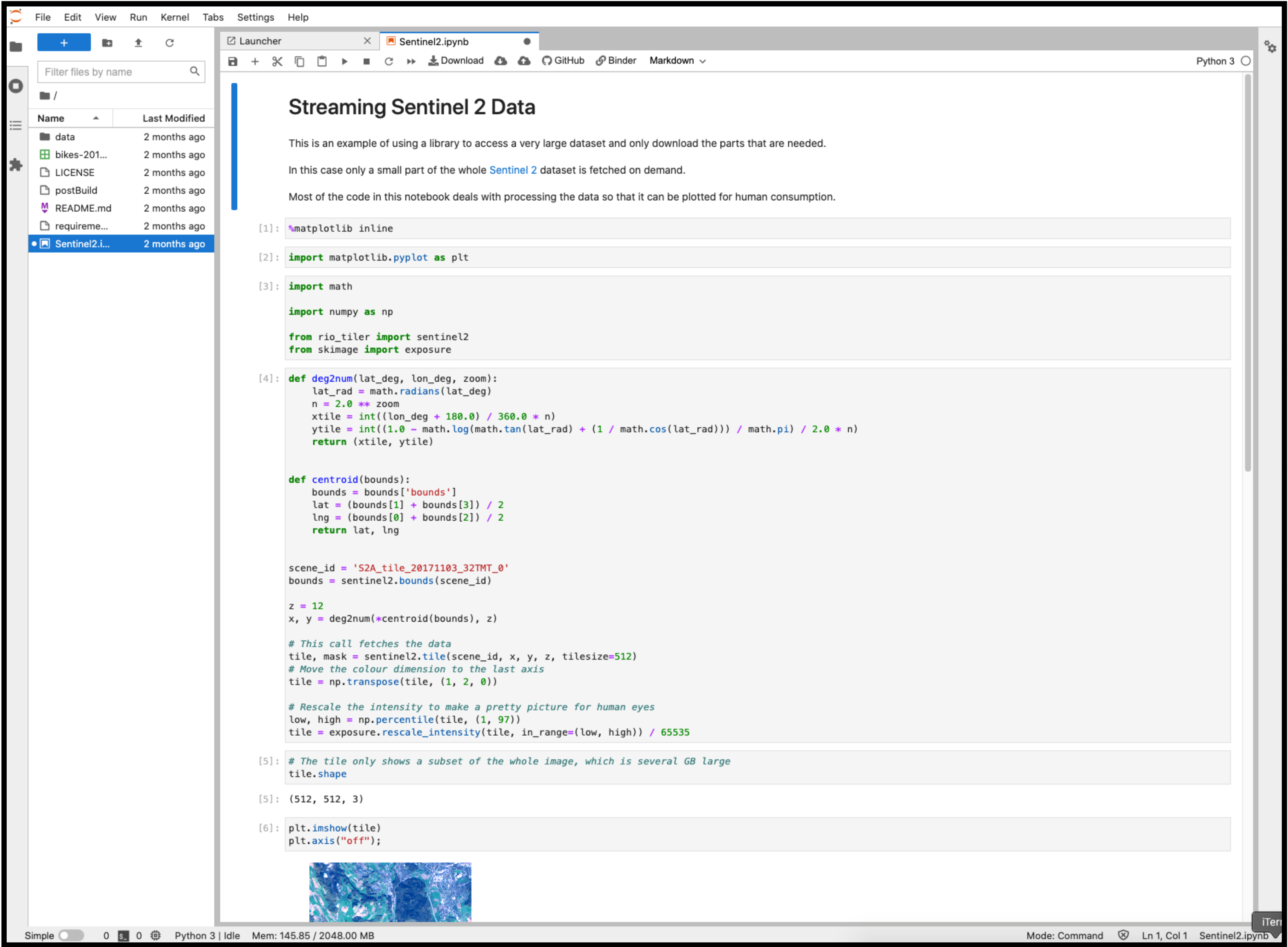
Total: 21M+

ACCESSIBILITY IN JUPYTER

THE CURRENT LANDSCAPE

WORKING WITH NOTEBOOKS

AS A PERSON WITHOUT A DISABILITY

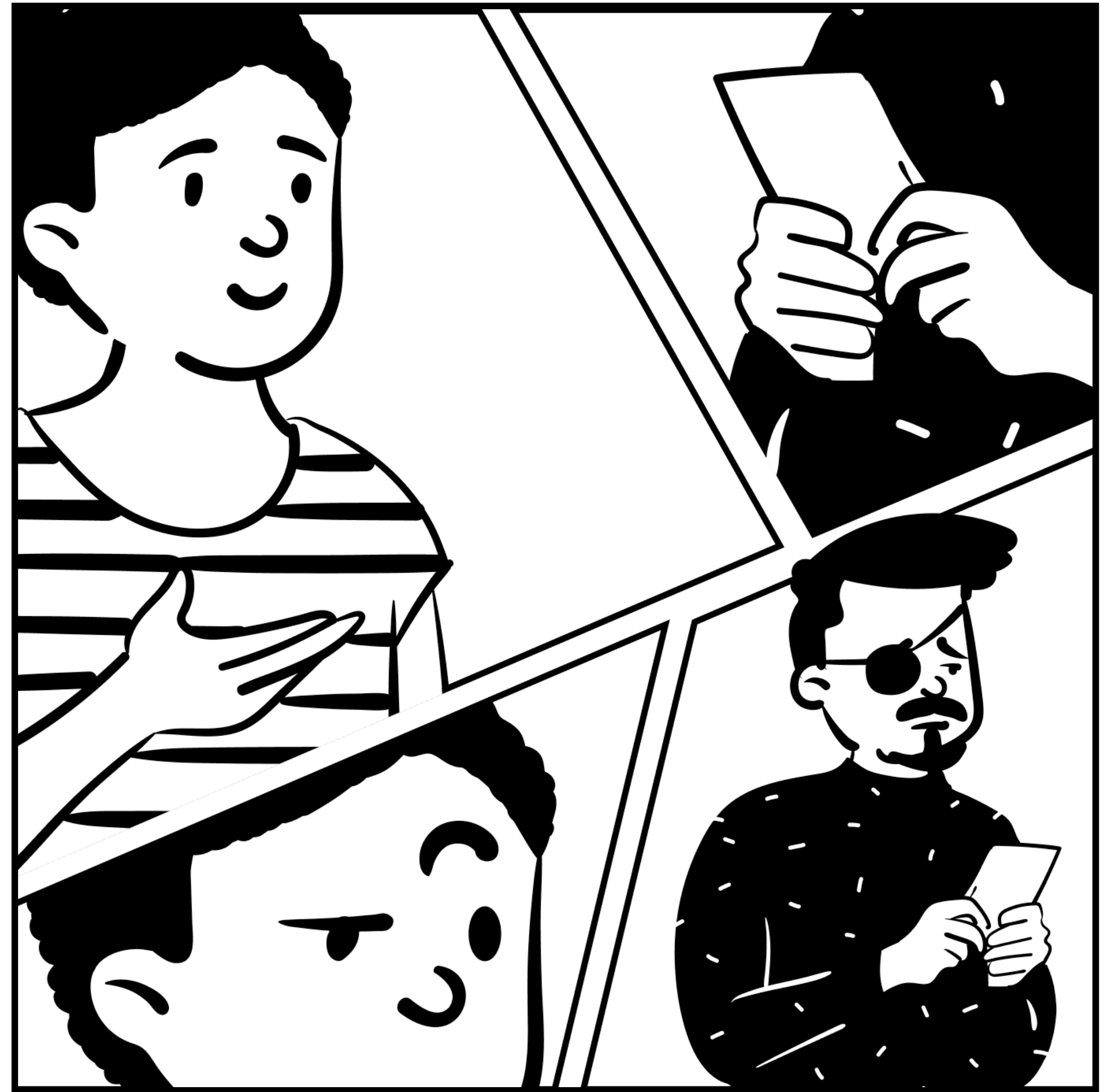


Screenshot of JupyterLab for <https://github.com/binder-examples/getting-data>

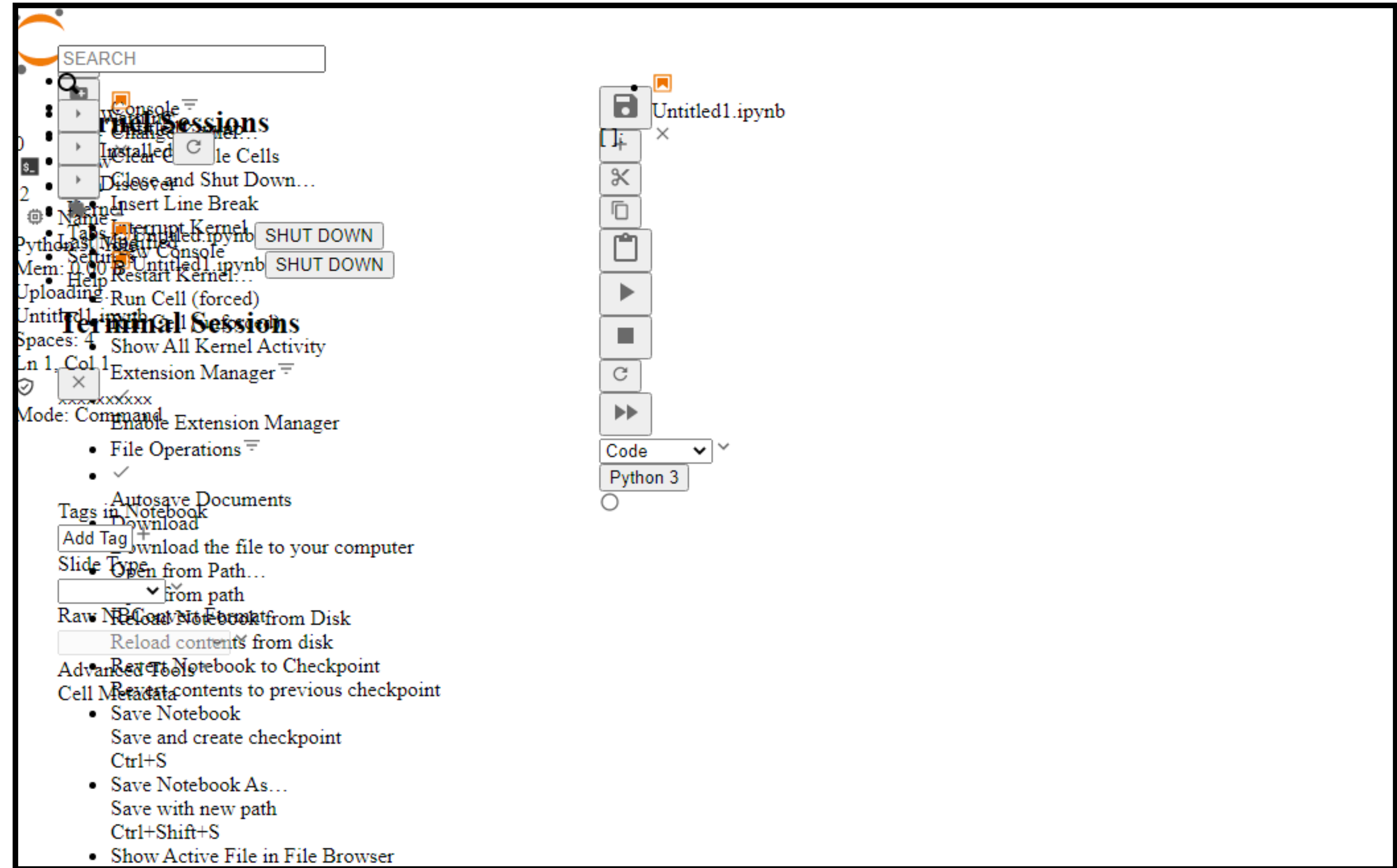
SCENARIO:

SHARING A JUPYTER NOTEBOOK

With a blind person or someone
with a temporary disability.



IF YOU NEEDED TO USE A SCREEN READER



**[HTTPS://GITHUB.COM/JUPYTERLAB/
JUPYTERLAB/ISSUES/9399](https://github.com/jupyterlab/jupyterlab/issues/9399)**

Screenshot of JupyterLab as experienced by individuals with a Disability who need to use assistive technology

MAIN AREAS NEEDING ATTENTION

KEYBOARD NAVIGATION AND ACTIONS: MOUSE FREE EXPERIENCE

KEYBOARD FOCUS

ALT TEXT PROVIDED FOR NON STATIC ELEMENTS

FULL COLOUR BLINDNESS SUPPORT

ZOOM UP TO 400%

BETTER USER INPUT LABELLING

**WORKING TOWARDS WCAG [WEB
CONTENT ACCESSIBILITY GUIDELINES]
COMPLIANCE**

MAIN AREAS NEEDING ATTENTION

KEYBOARD NAVIGATION AND ACTIONS

KEYBOARD FOCUS

ALT TEXT PROVIDED FOR NON STATIC ELEMENTS

FULL COLOUR BLINDNESS SUPPORT

ZOOM UP TO 400%

BETTER USER INPUT LABELLING

PLOTS

BINDER

DASHBOARDS

DOCUMENTATION

JUPYTER BOOK

NBVIEWER

OUR APPROACH

WHAT WE AIM TO DO WITH THIS GRANT

CORE METHOD

UNIVERSAL DESIGN

An environment (product, service,
in that environment) should be
designed to meet the needs of all
people who wish to use it.



ADAPT TO JUPYTER

UNIVERSAL DESIGN MATTERS

OPEN PRODUCTS AND EXPERIENCES TO MORE PEOPLE

INCLUDES A RANGE OF ABILITIES

REFLECT HOW PEOPLE ARE AND HOW THEY WORK

LOWER BARRIERS TO PARTICIPATION IN SCIENCE AND SOCIETY IN GENERAL

WORK IN THE OPEN

🌐 Jupyter a11y CZI grant 🚀			
📅 Backlog ▾ 📋 Issues status 📅 Milestones view 📋 📌 6-months status board + New view			
🔍 Title	Status	Milestone	Labels
1 🟢 Develop a public roadmap for a11y improvements	Todo ▾	📌 6-months ▾	impact: high ✨ status: needs discussion 💬 type: comms 📄 type: de ▾
2 🟢 Develop pathways for participatory community engagement	Todo ▾	📌 6-months ▾	Goal 🎯 status: needs discussion 💬 type: community 👤 type: deliver ▾
3 🟢 Add automated a11y tests to JupyterLab	Todo ▾	📌 6-months ▾	Goal 🎯 status: needs discussion 💬 type: deliverable type: testing 🧪 ▾
4 🟢 [Phase -1] - working towards WCAG 2.1 compliance	Todo ▾	📌 6-months ▾	Goal 🎯 status: needs discussion 💬 type: codebase 📄 type: delivera ▾

<https://github.com/orgs/Quansight-Labs/projects/5>

<https://github.com/Quansight-Labs/jupyter-a11y-mgmt>

**ACTIVE INVOLVEMENT OF PEOPLE
WITH DISABILITIES**

NOTHING ABOUT US

WITHOUT US

COMMUNITY

INCREASE PUBLIC AWARENESS AND UNDERSTANDING OF DISABILITY

ADOPT

A Jupyter strategy and
plan of action for
disability inclusion

STRENGTHEN

The community
participatory pathways

EXTEND

To other projects in the
Jupyter ecosystem

REUSE

Develop an accessibility
framework for projects in
the scientific computing
ecosystem



Quansight Labs

THANK YOU

Feel free to reach out at

tallard@quansight.com

ipresedo@quansight.com