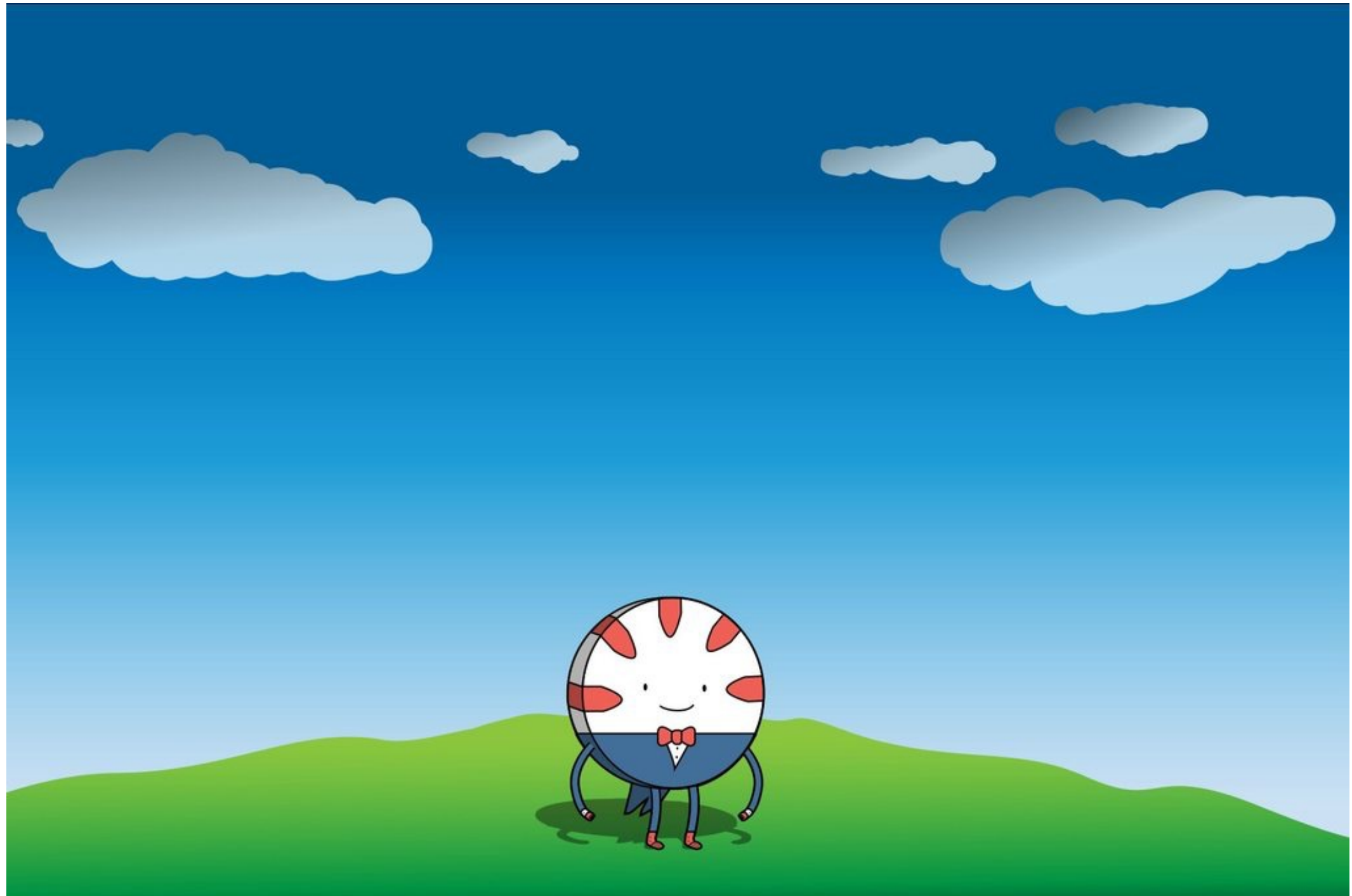


contemporary
data viz in R



@cjlortie

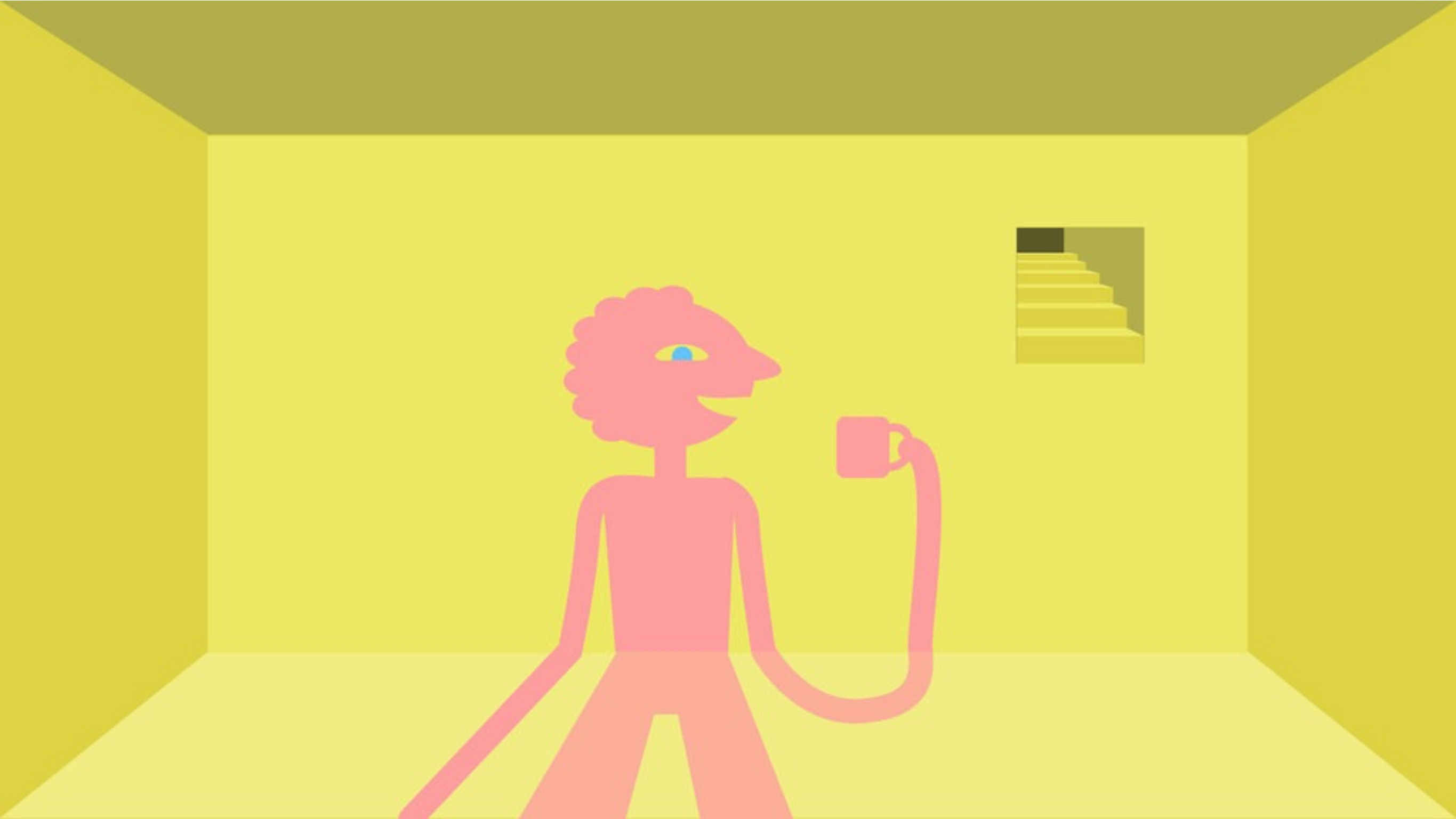
philosophy of graphics



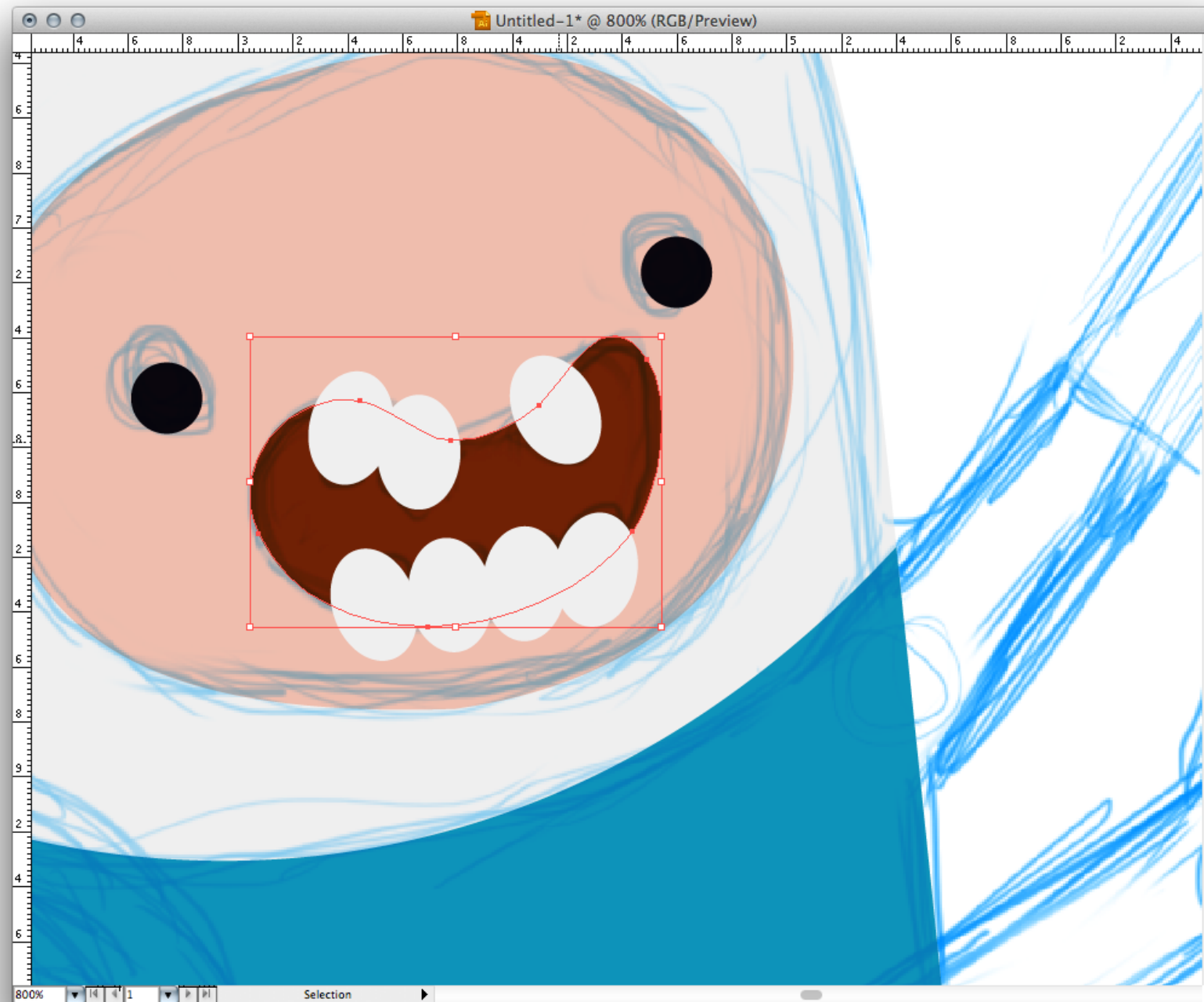
clean and simple

grammar of graphics

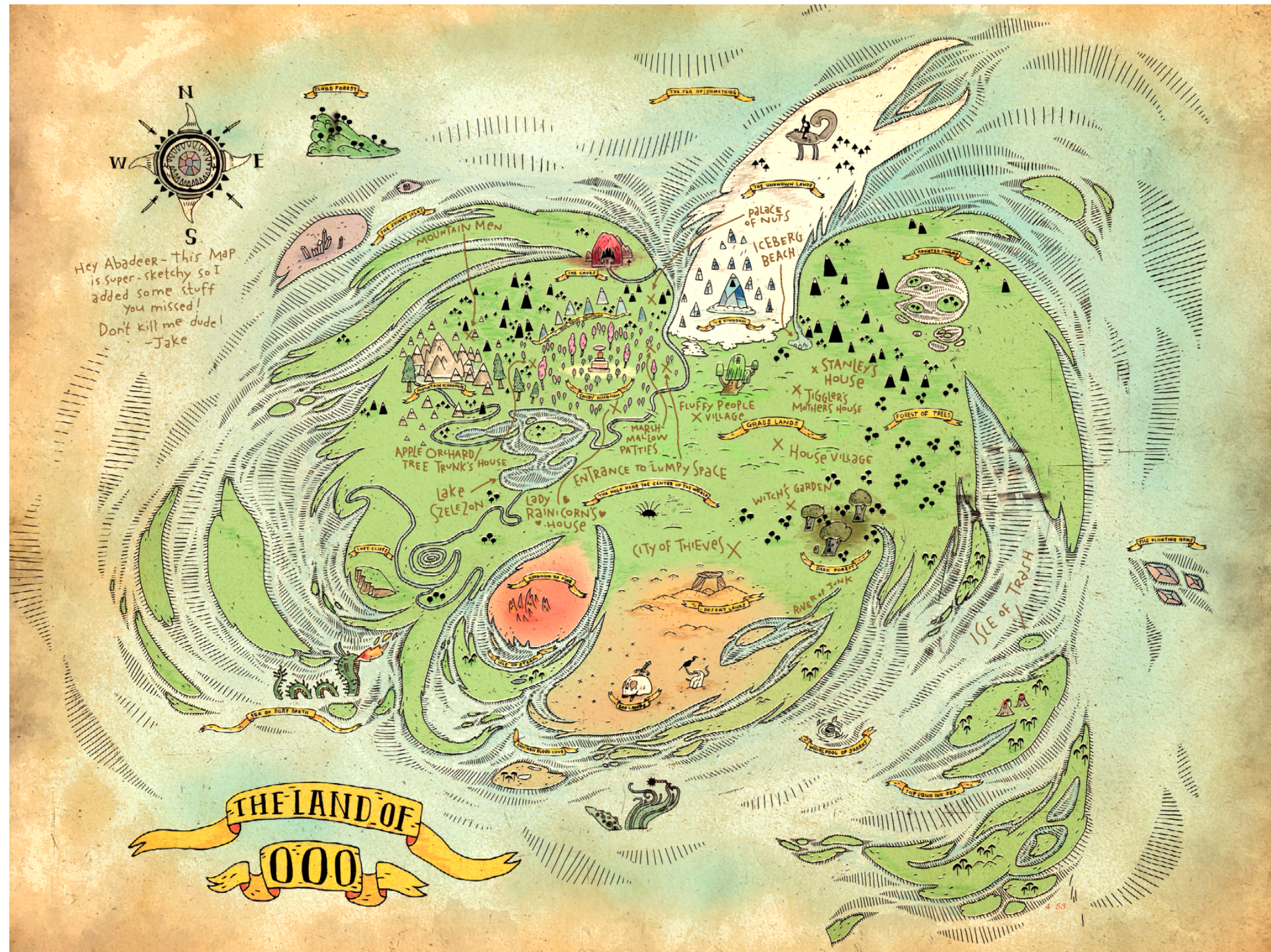
layers



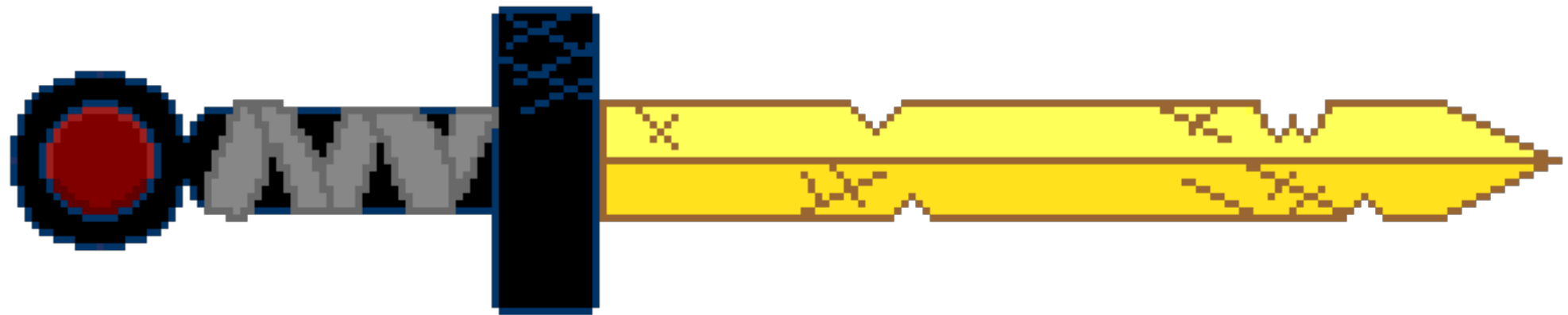
primacy of layers (simple first, then complex)



data are mapped to aesthetic attributes and objects



data are always mapped



but explicit control is more powerful

data first then statistics

you define purpose not the data visualization



basic graphics
grid graphics
lattice and lattice extra
ggplot2

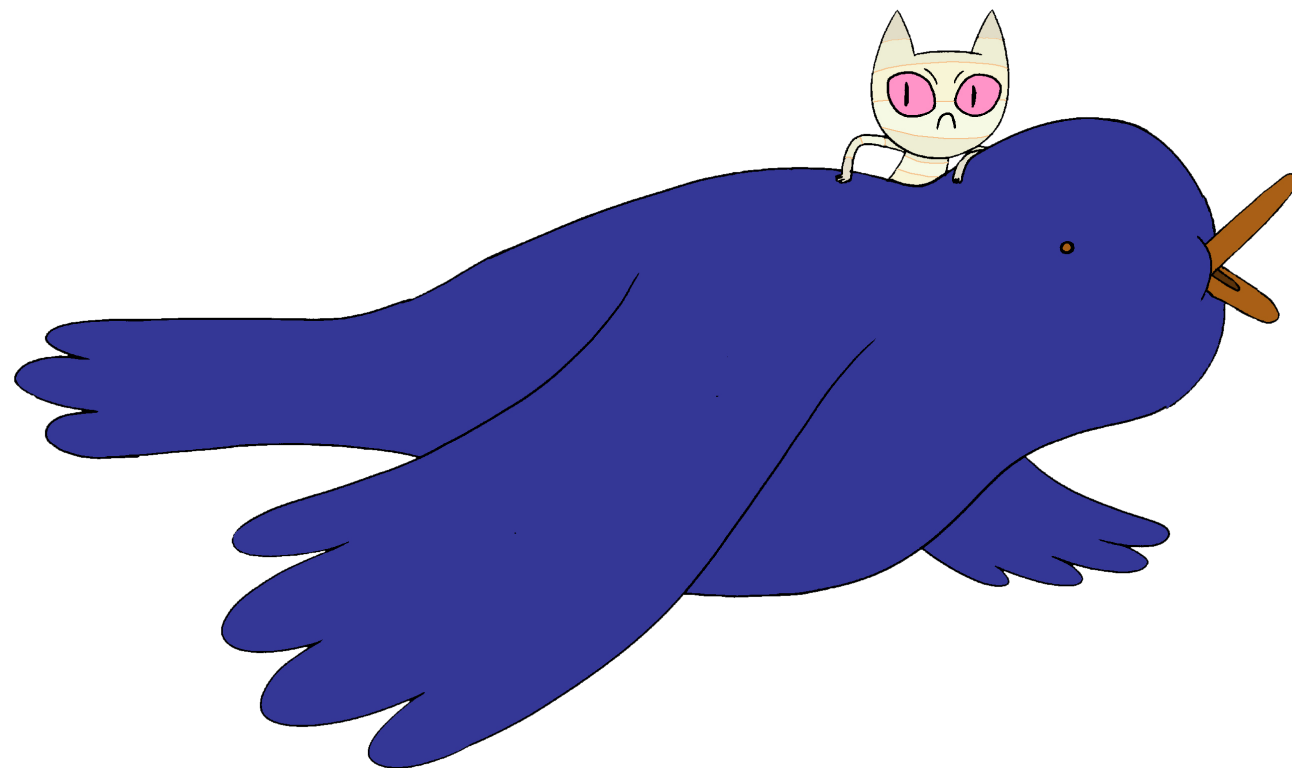


base <- edit only on top

grid <- provide structure

lattice <- trellis graphics (details/conditions)

ggplot2 <- grid/trellis but model approach



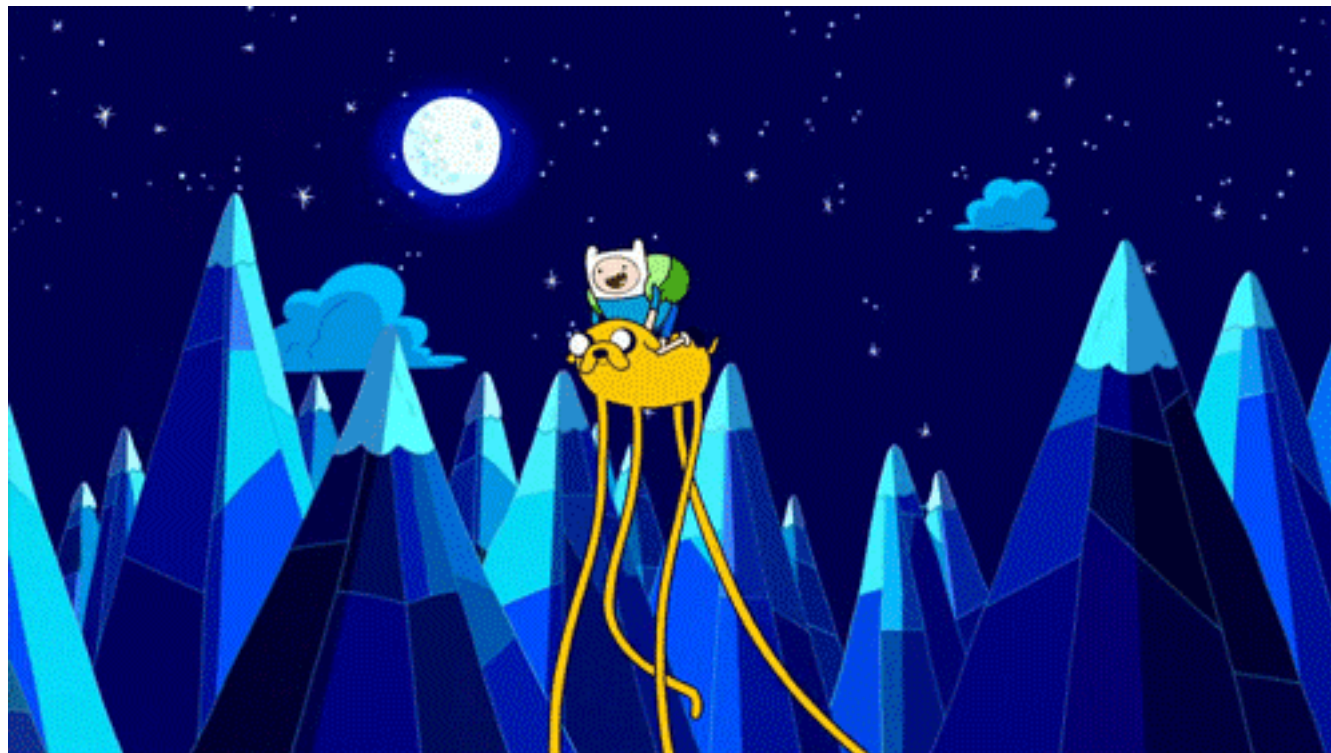
implications for workflow

model suggests structures

aesthetics always important

building takes forethought

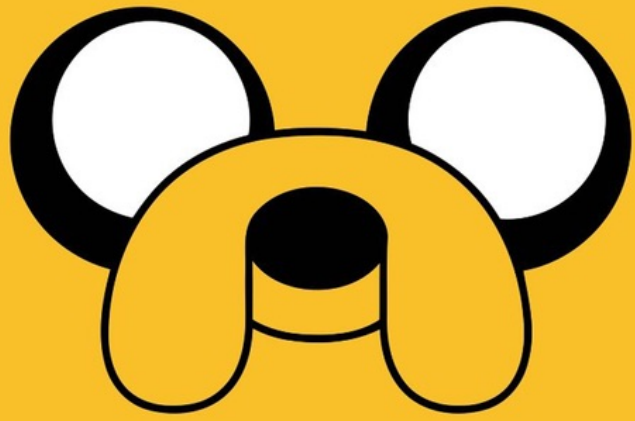
plot versus qplot



qplot automatically maps data attributes

geoms are the types of objects you map data unto





**KEEP
CALM**

AND

**MAKE BACON
PANCAKES**

qplot takes care
of the layers for you

ggplot() requires you to add a layer with +

tip: assign ggplot to object then add



beware overplotting



Use R!

Hadley Wickham

ggplot2

Elegant Graphics for Data Analysis

Second Edition

 Springer

faceting

jitter

alpha