

Statistical evaluation of different mathematical models for diffusion weighted imaging of prostate cancer xenografts in mice

Supplementary Material

Low b-value DWI data (Figures S1-S10):

T2-weighted image fused with parametric maps of ADC_m , ADC_s , α , ADC_k , K , f_p , D_p , and D_f parameters are shown. The parametric maps are scaled as follows: ADC_m min-max: 0-2.0 $\mu m^2/ms$, ADC_s min-max: 0-1.5 $\mu m^2/ms$, α min-max: 0.6-1.0, ADC_k min-max: 0-2.0 $\mu m^2/ms$, K (E1-5), min-max: 0-3.0, f_p , min-max: 0-0.4, D_p min-max: 0-40.0 $\mu m^2/ms$, D_f min-max: 0-2.0 $\mu m^2/ms$.

High b-value DWI data (Figures S11-S20):

T2-weighted image fused with parametric maps of ADC_m , ADC_s , α , ADC_k , K , f_p , D_p , and D_f parameters are shown. The parametric maps are scaled as follows: ADC_m min-max: 0-2.0 $\mu m^2/ms$, ADC_s min-max: 0-1.5 $\mu m^2/ms$, α min-max: 0.6-1.0, ADC_k min-max: 0-2.0 $\mu m^2/ms$, K , min-max: 0-1.5, f_p min-max: 0-1.0, D_f min-max: 0-5.0 $\mu m^2/ms$, D_s min-max: 0-0.9 $\mu m^2/ms$.

Figure S1

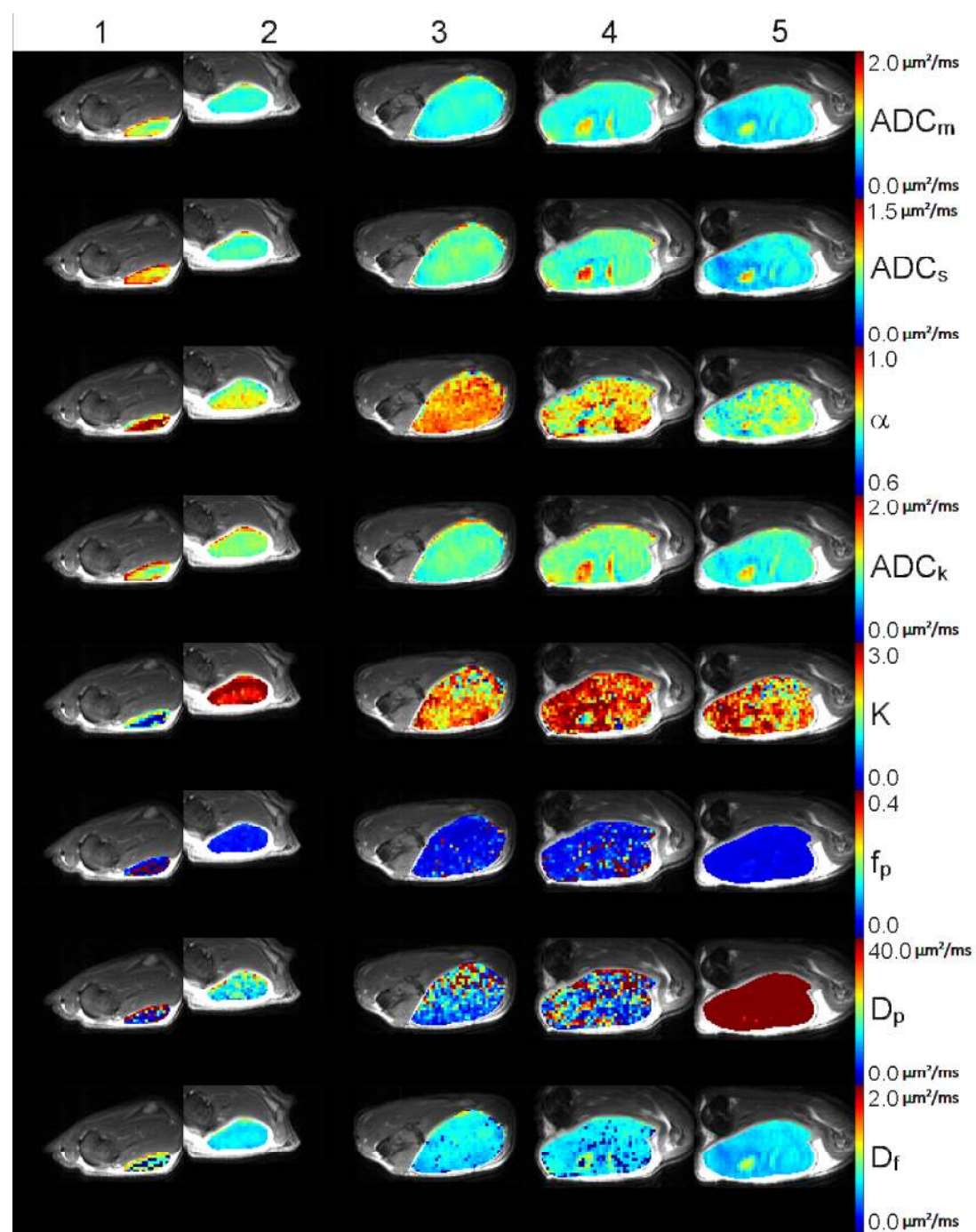


Figure S2

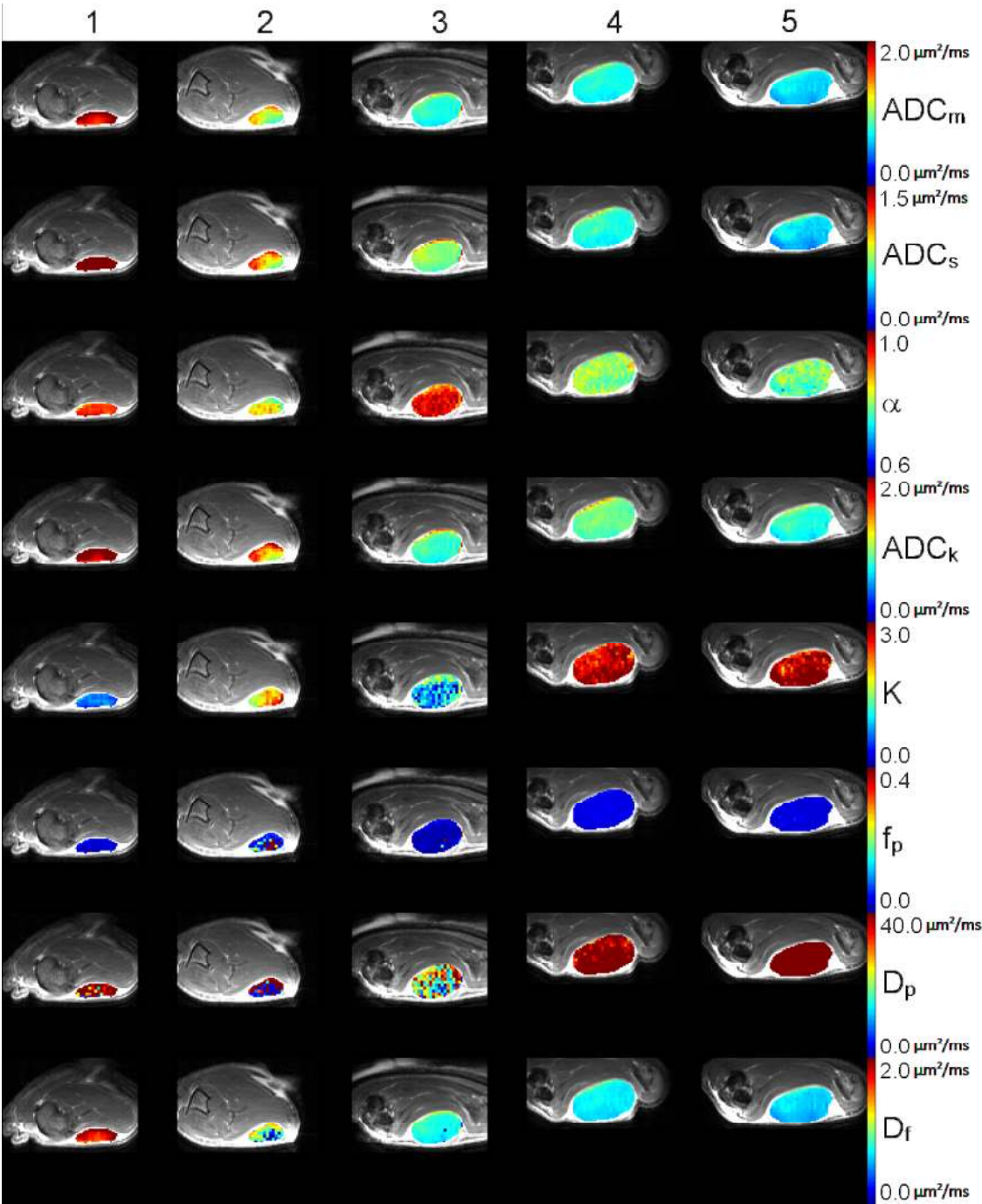


Figure S3

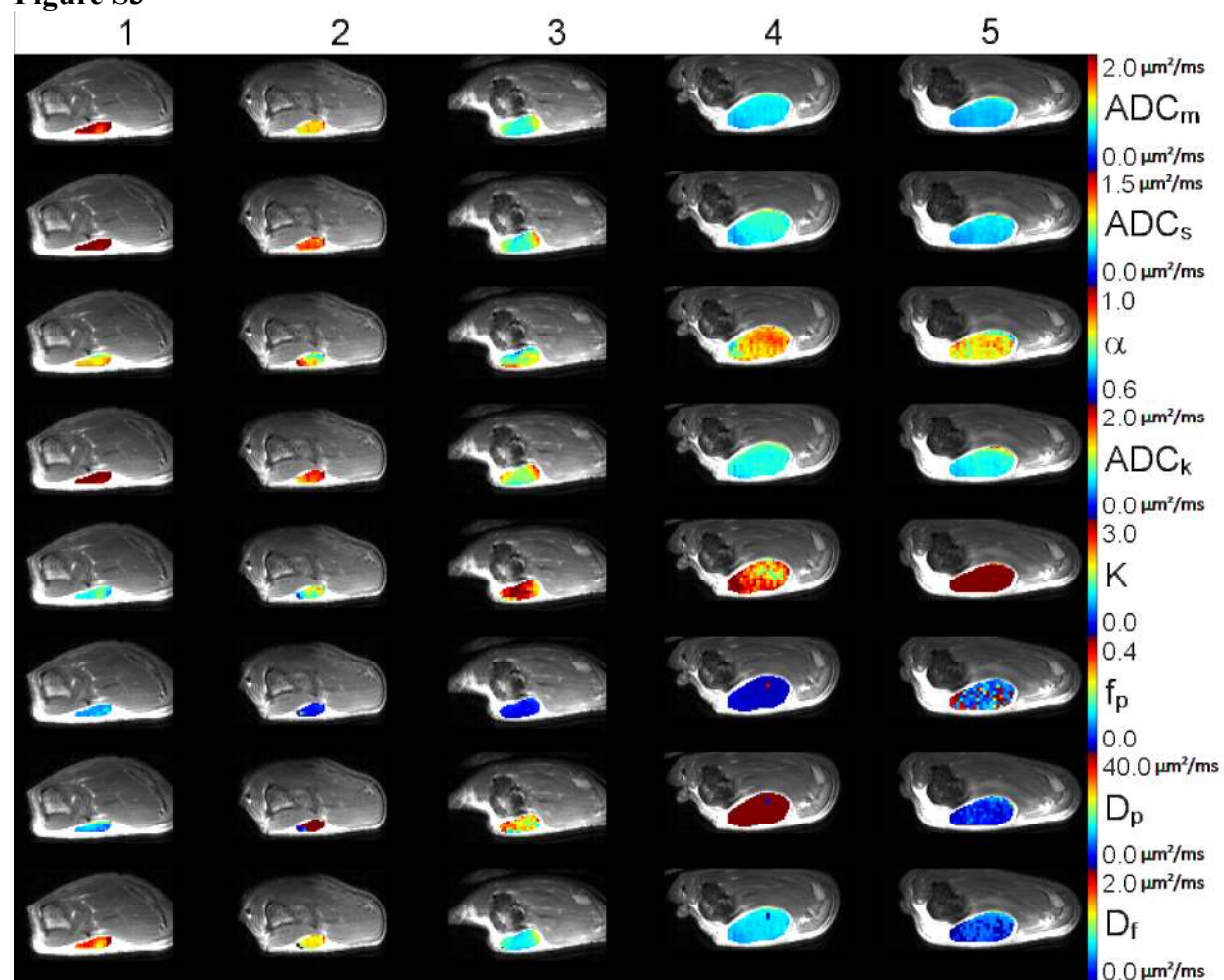


Figure S4

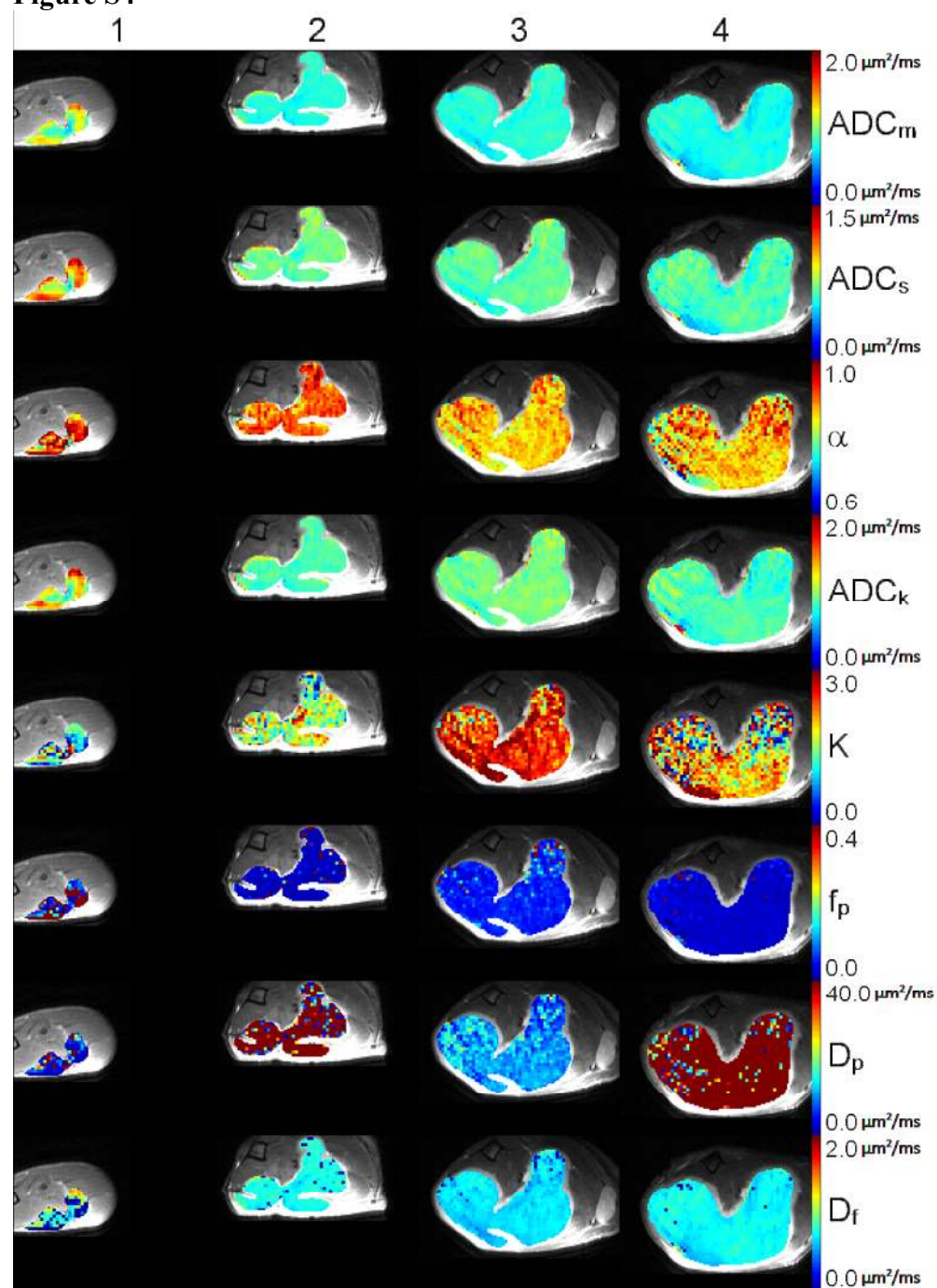


Figure S5

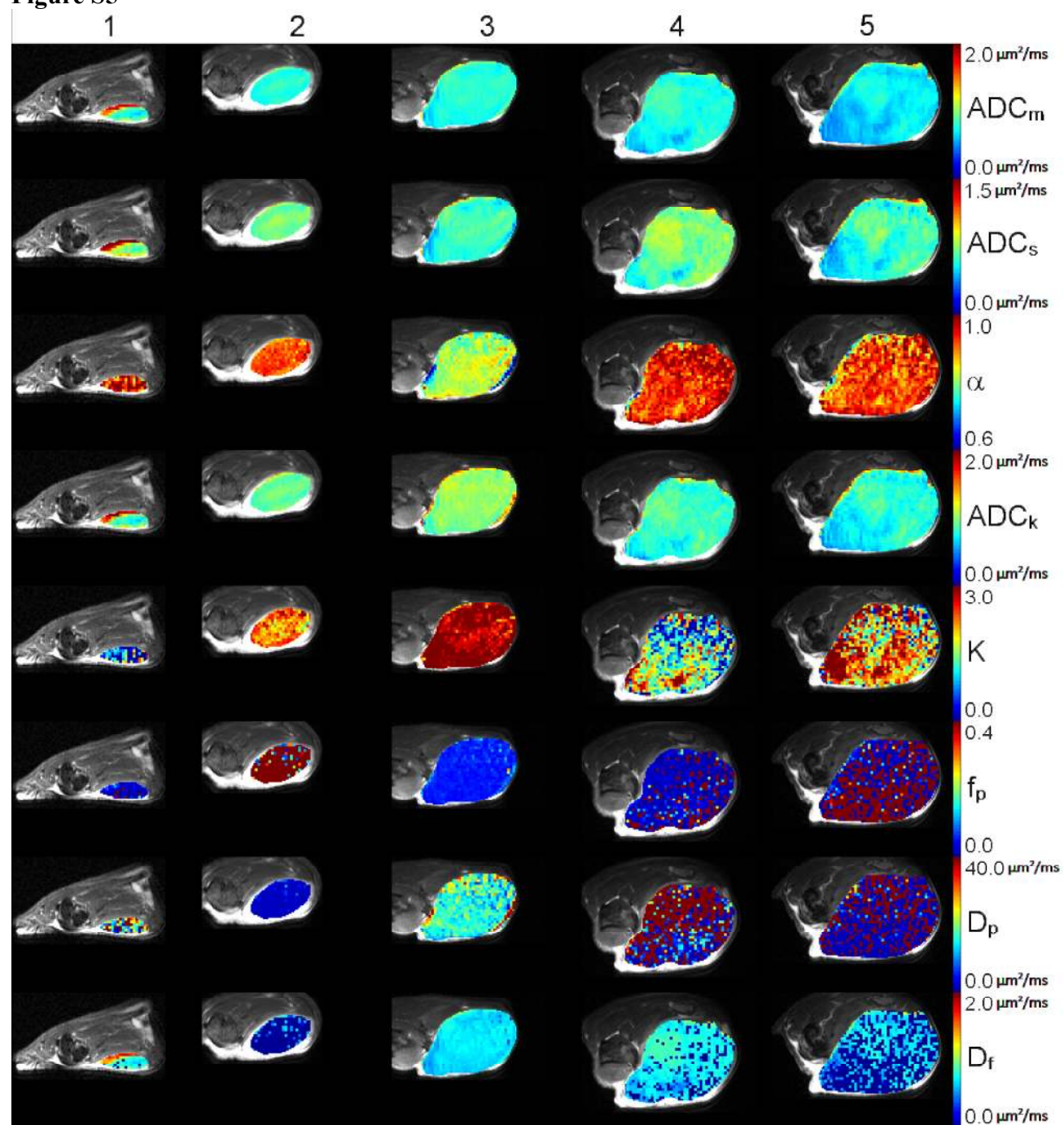


Figure S6

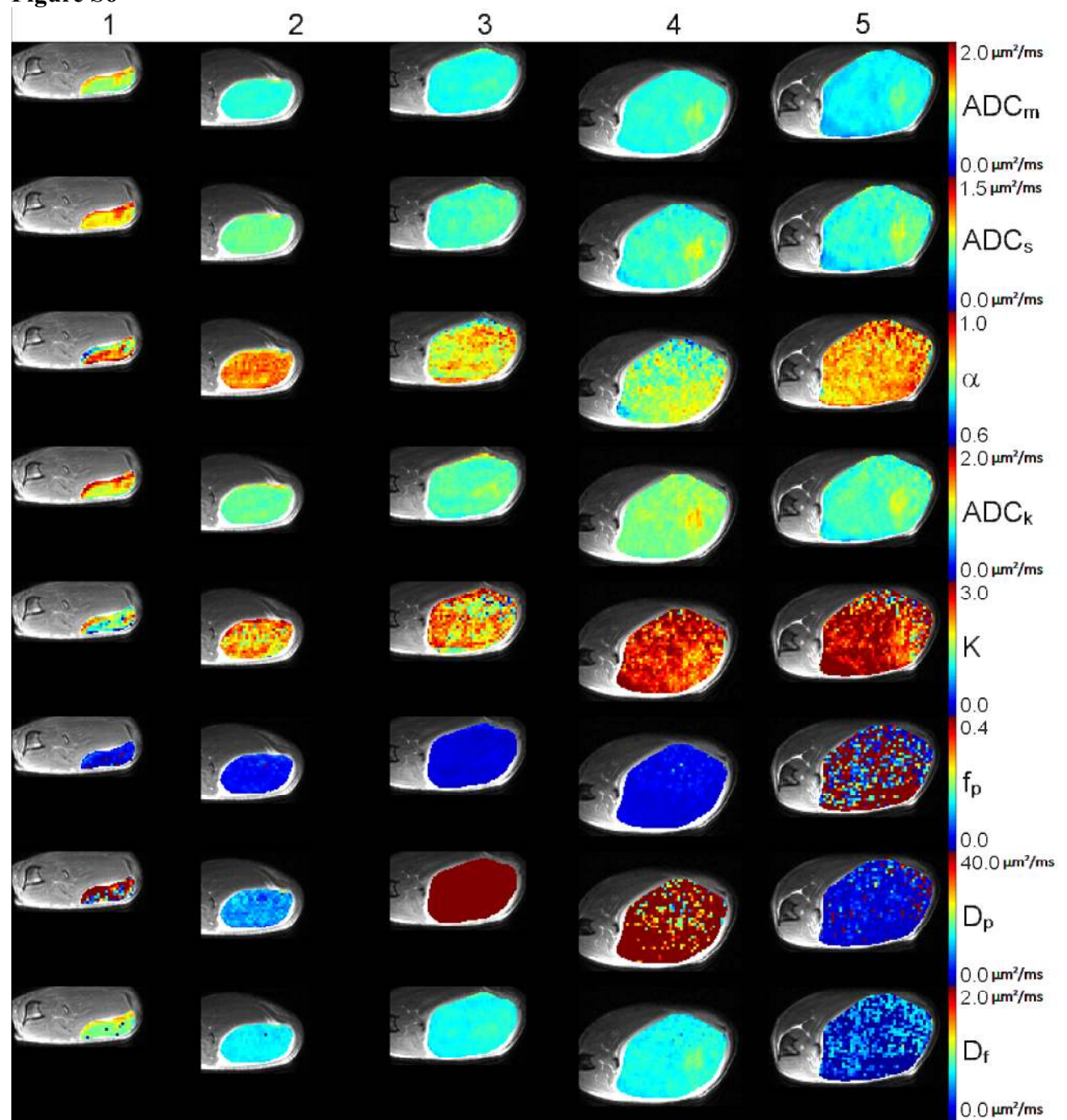


Figure S7

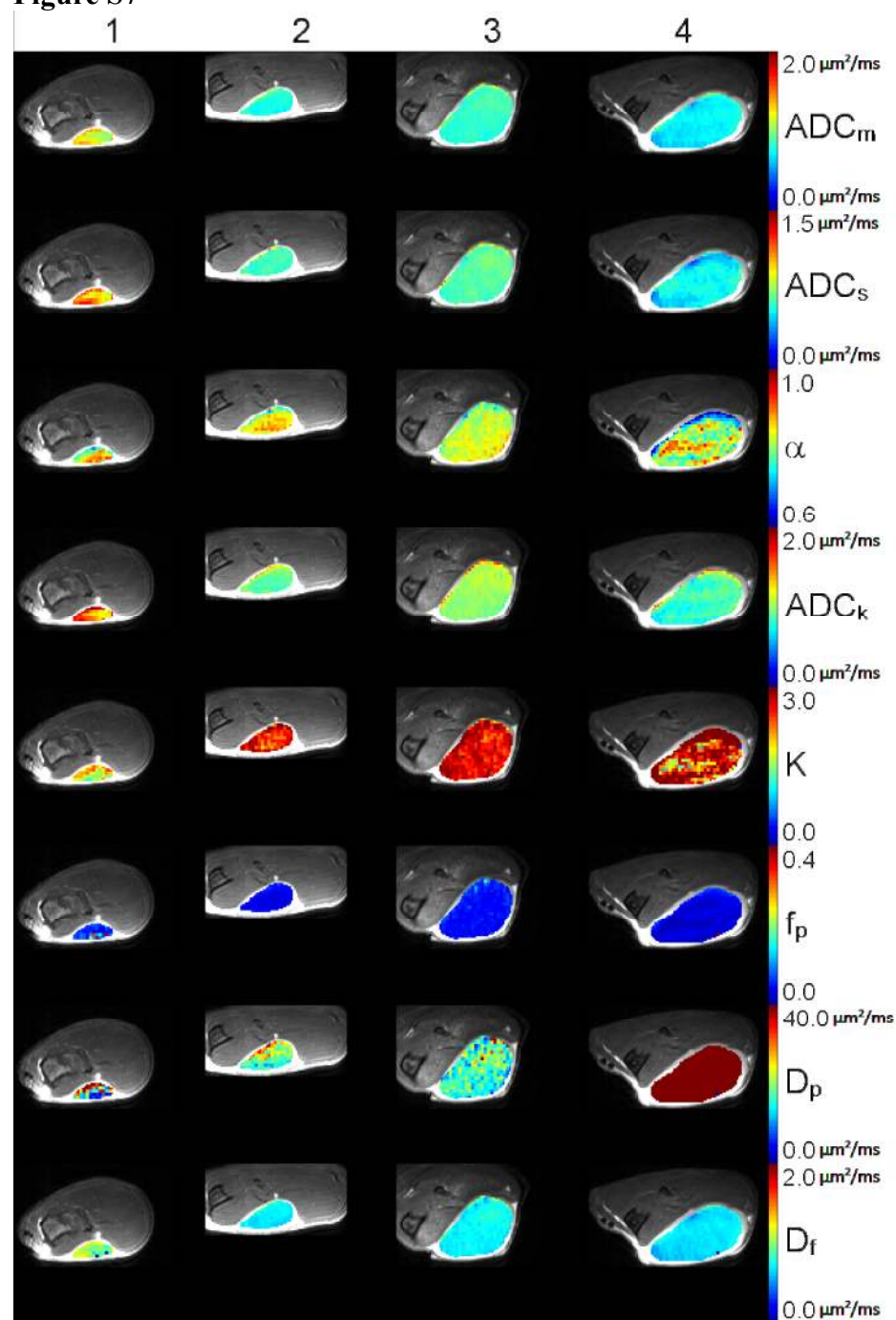


Figure S8

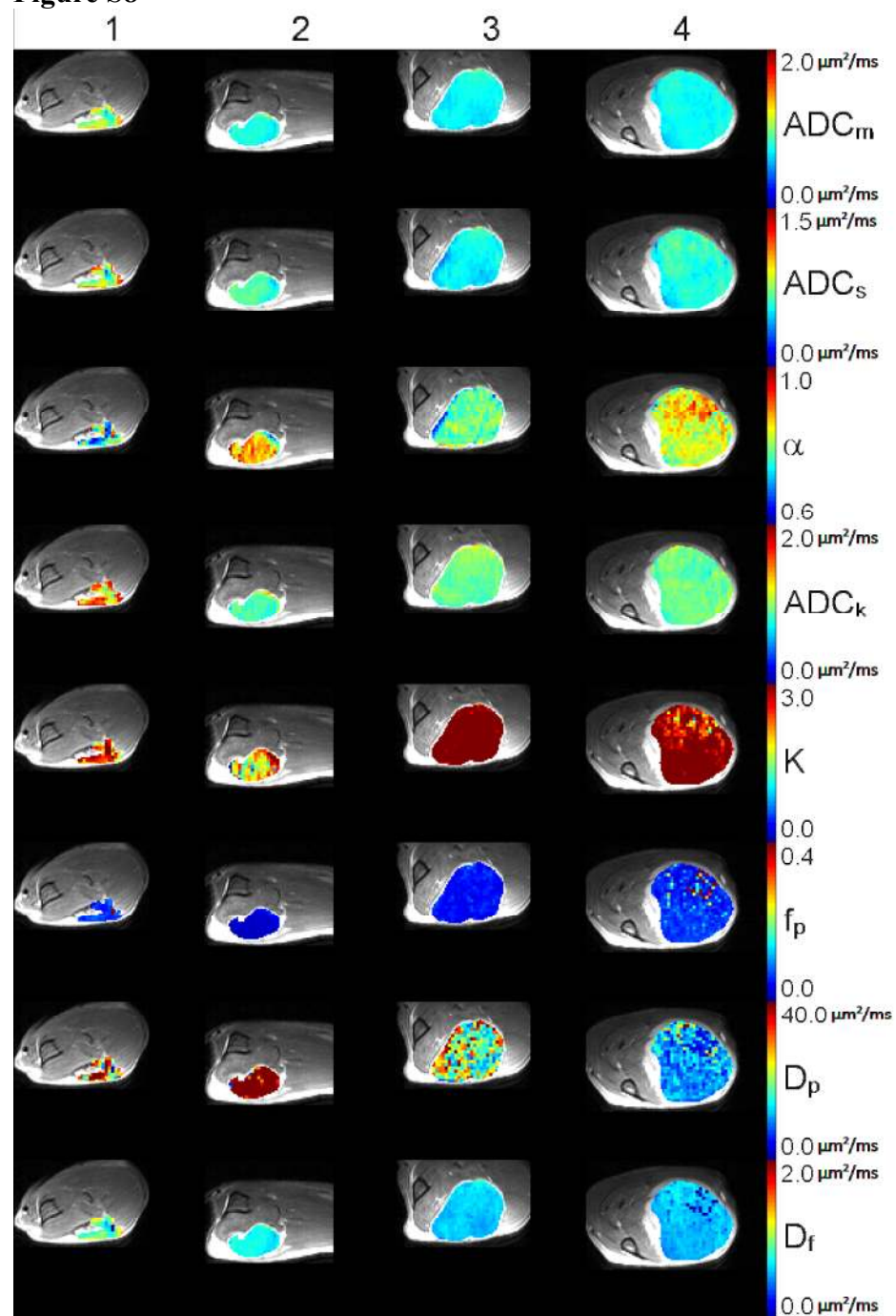


Figure S9

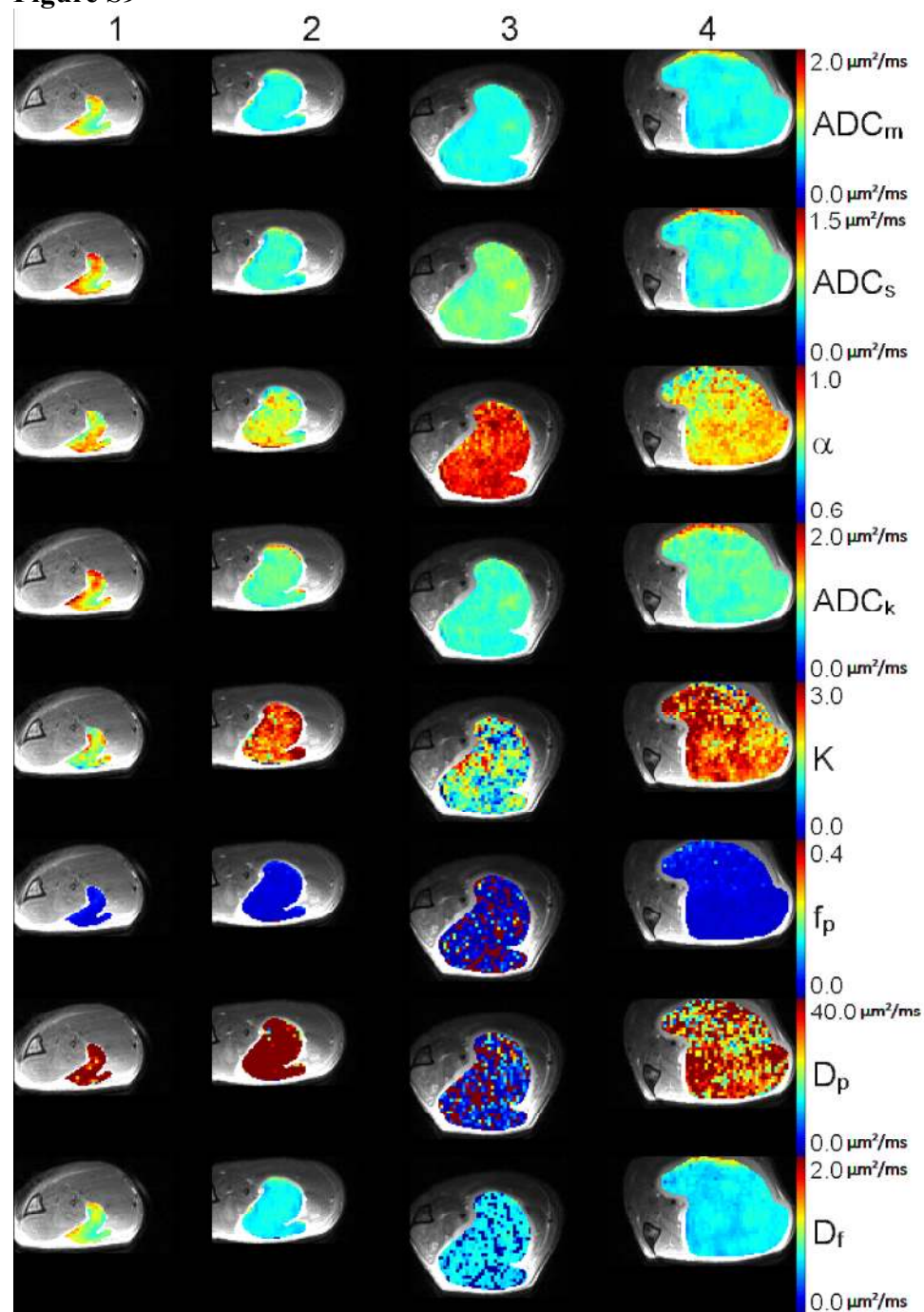


Figure S10

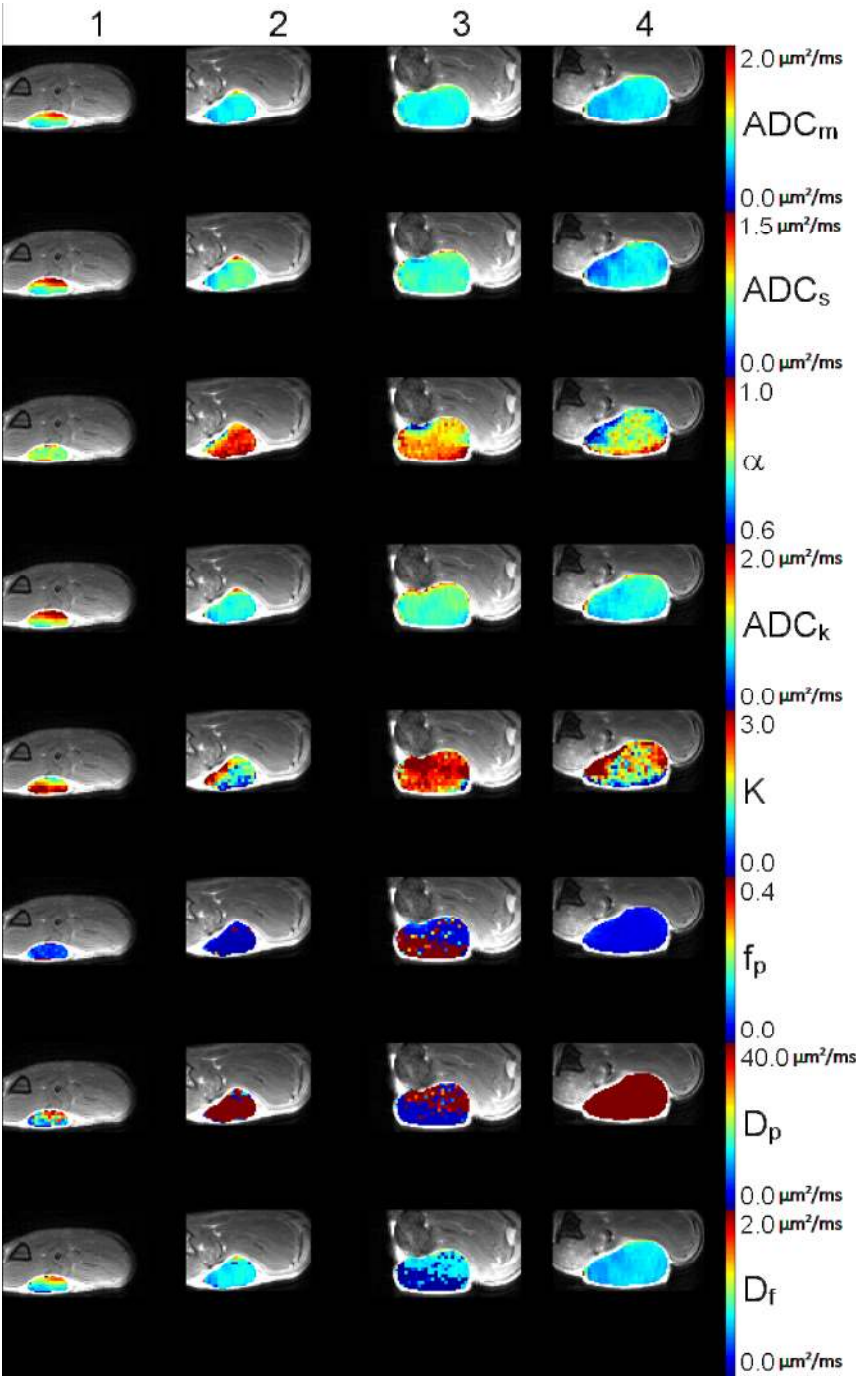


Figure S11

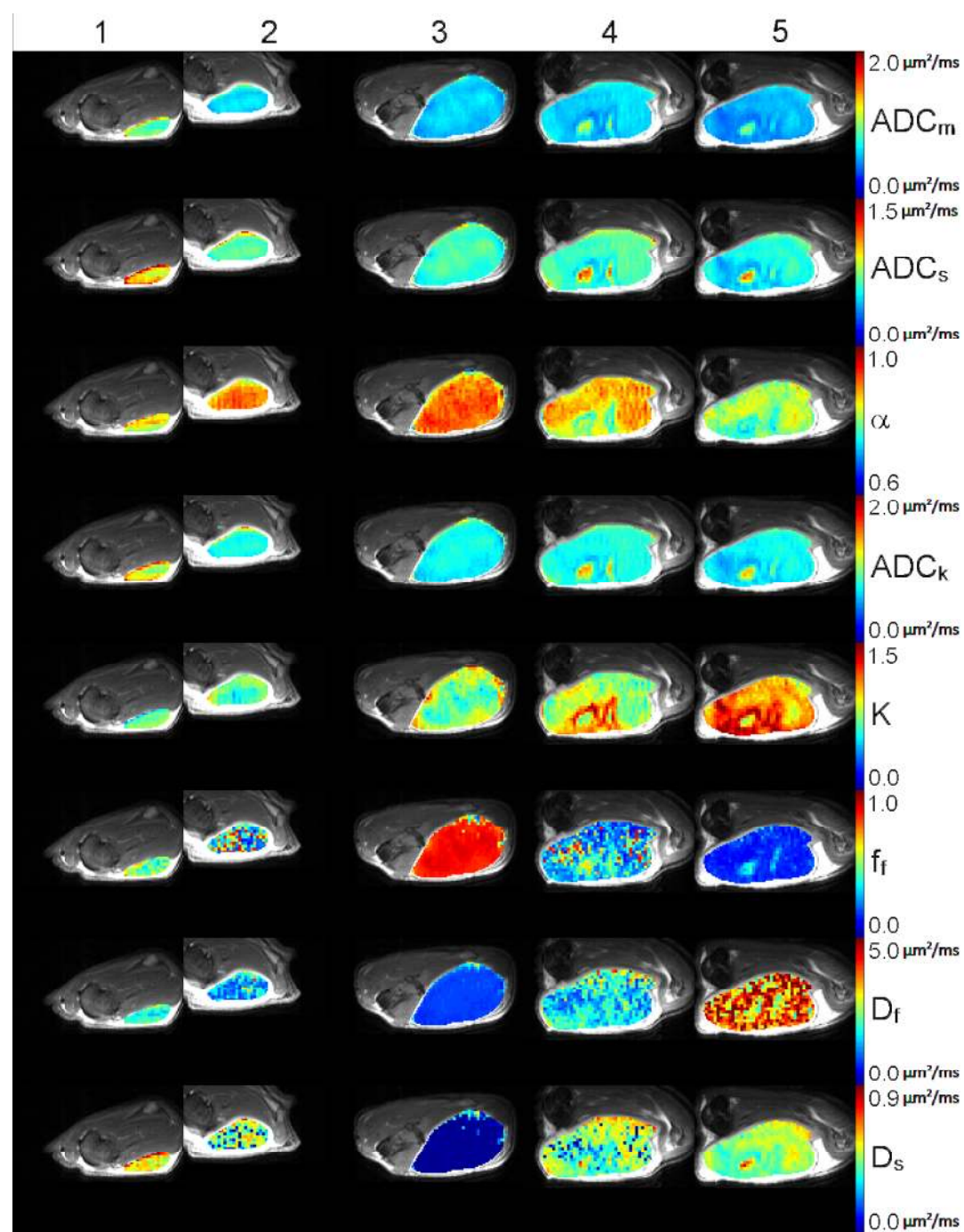


Figure S12

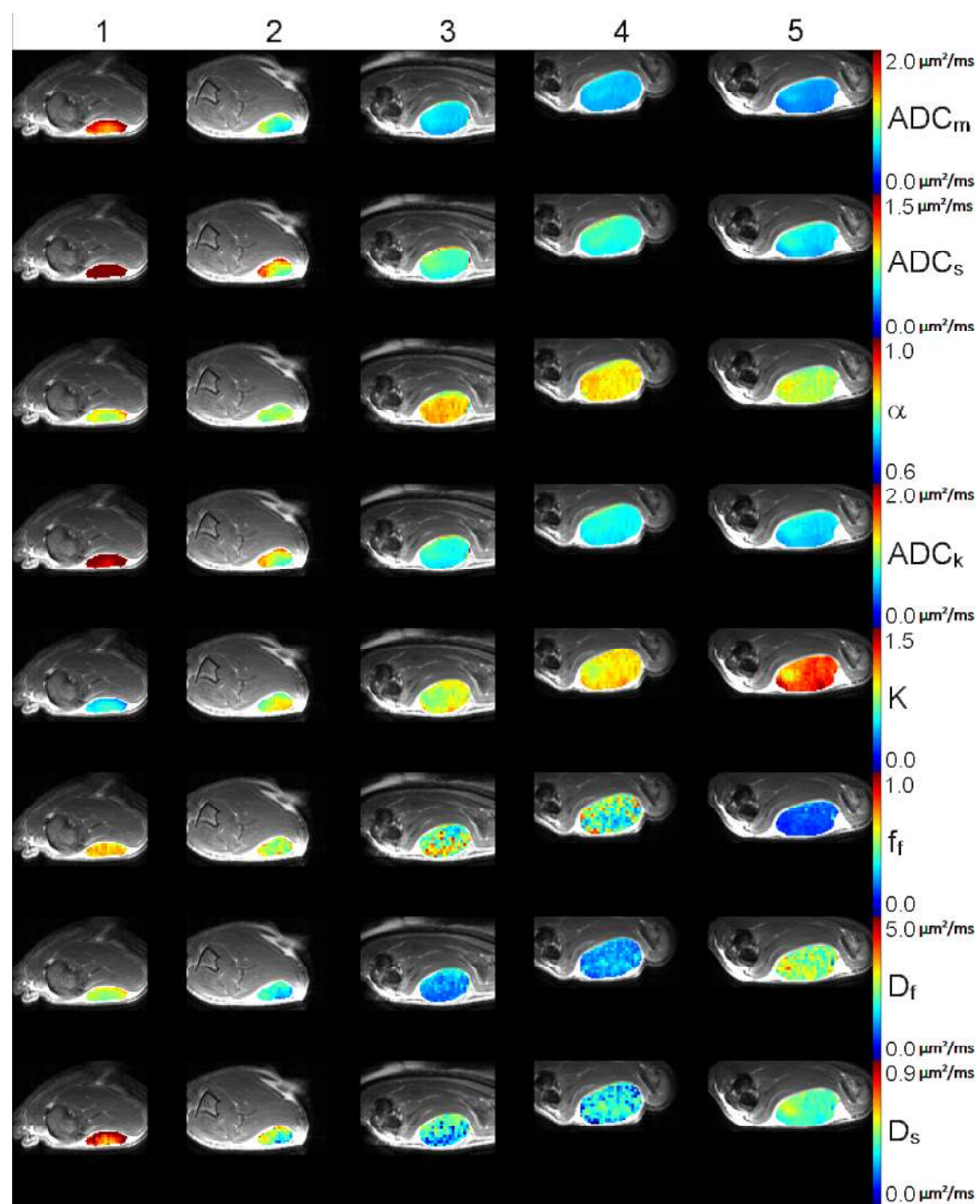


Figure S13

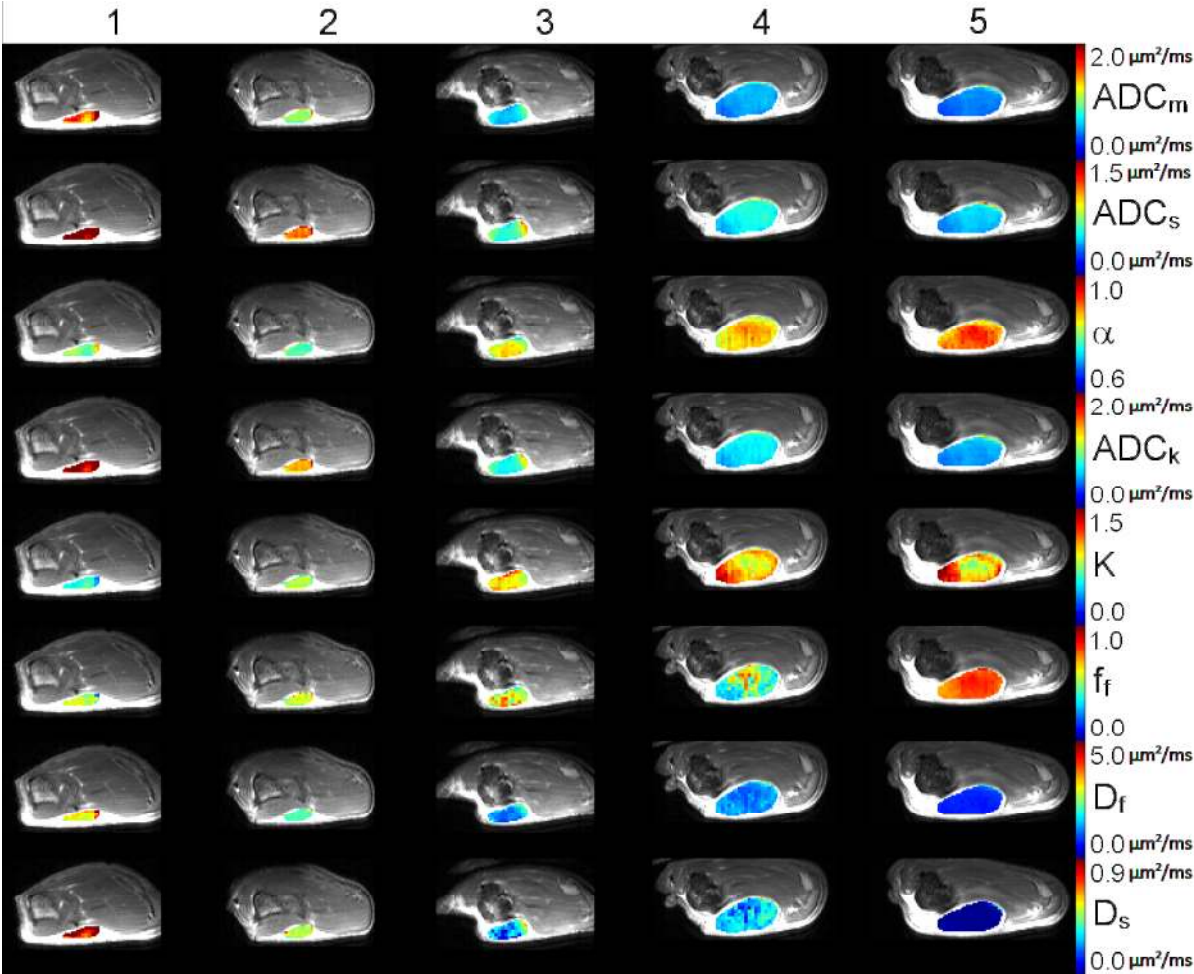


Figure S14

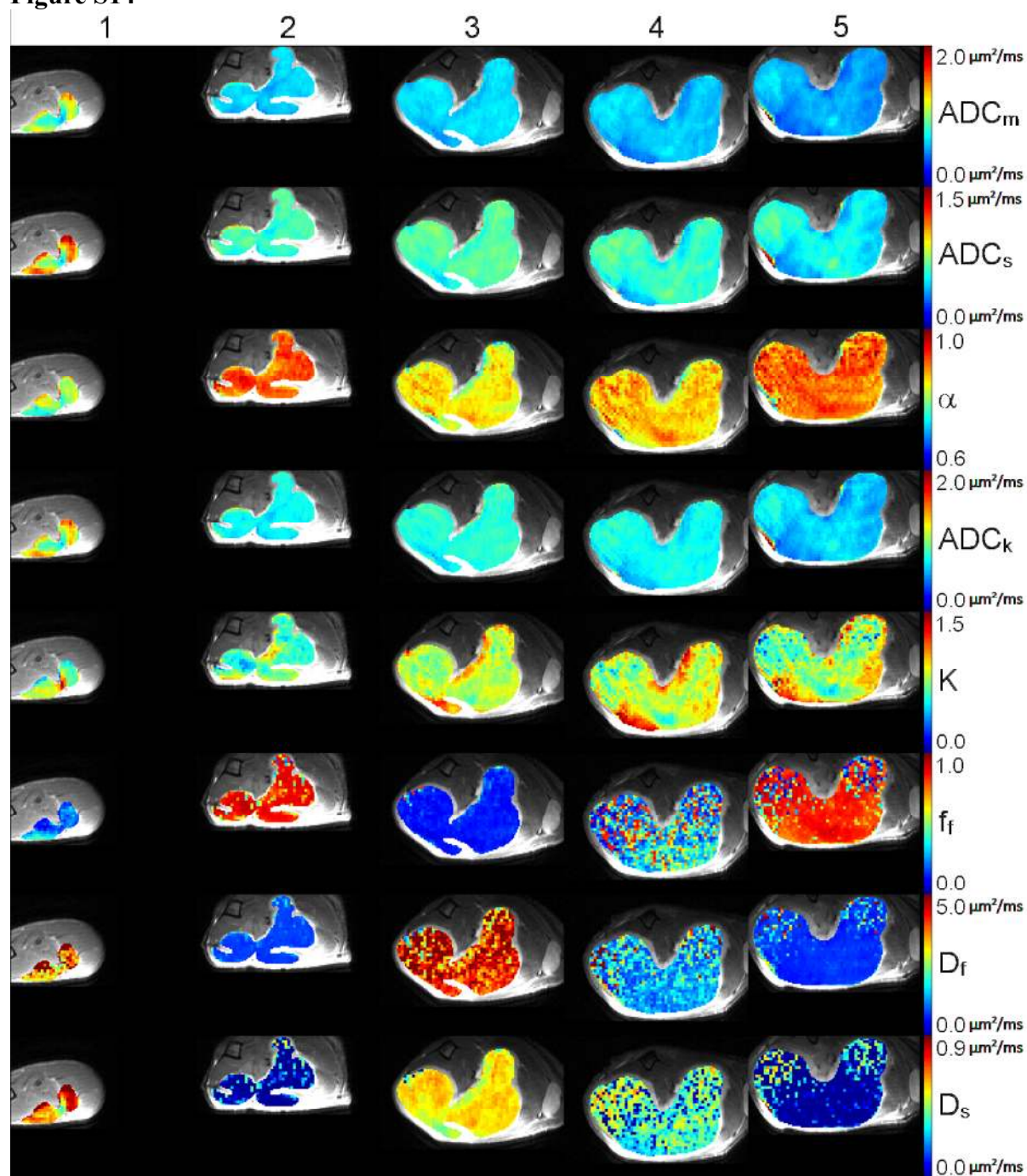


Figure S15

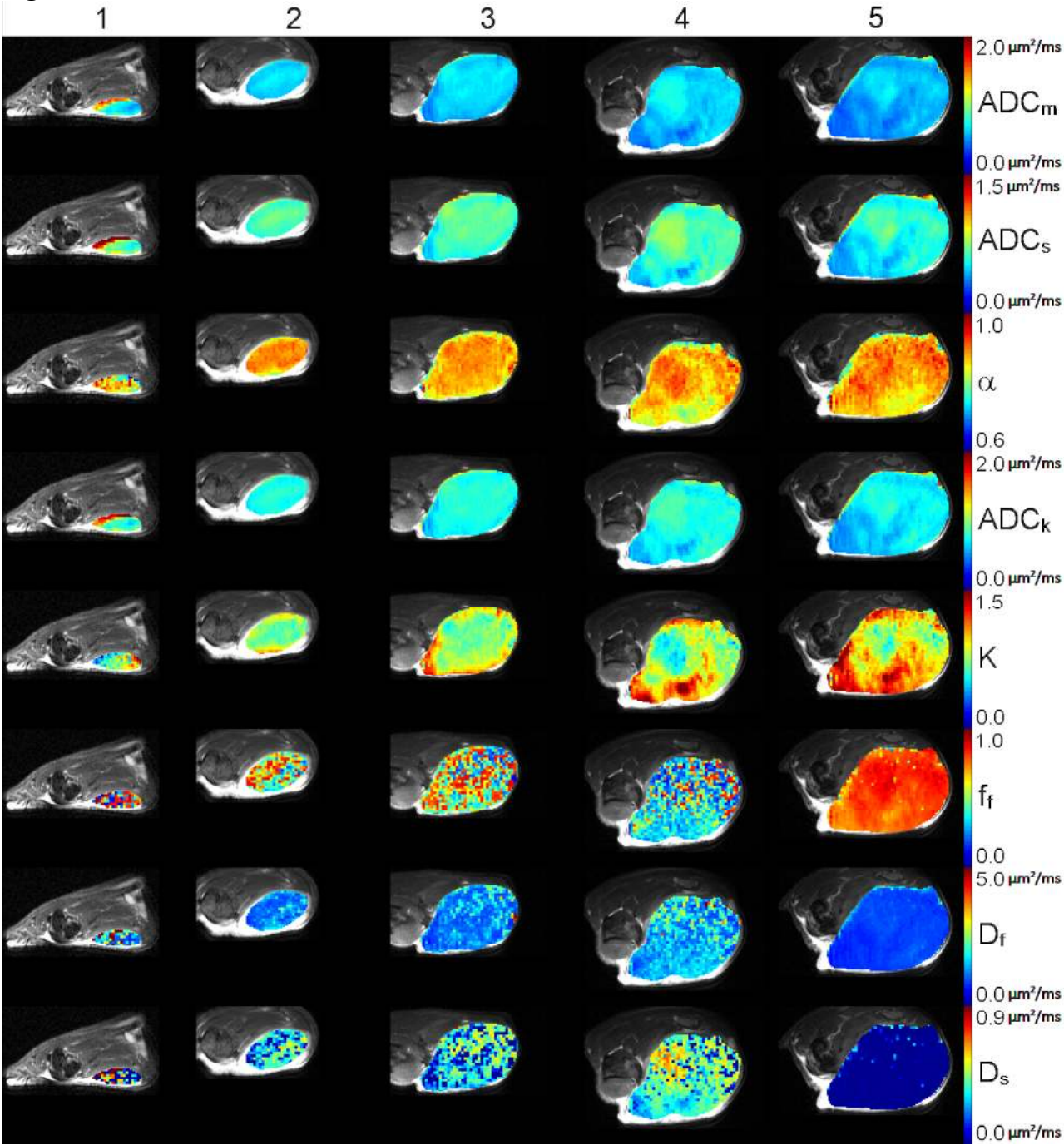


Figure S16

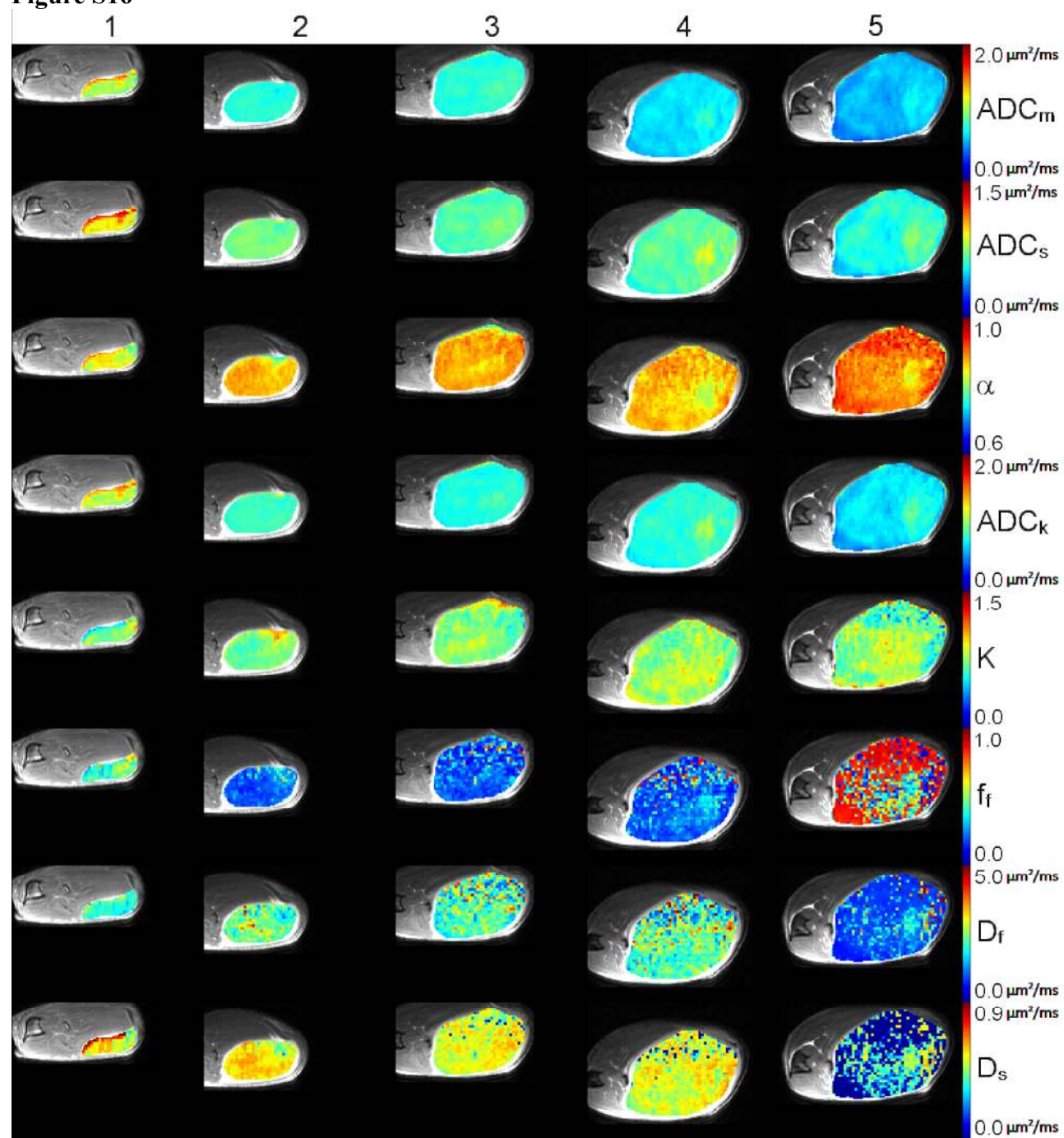


Figure 17

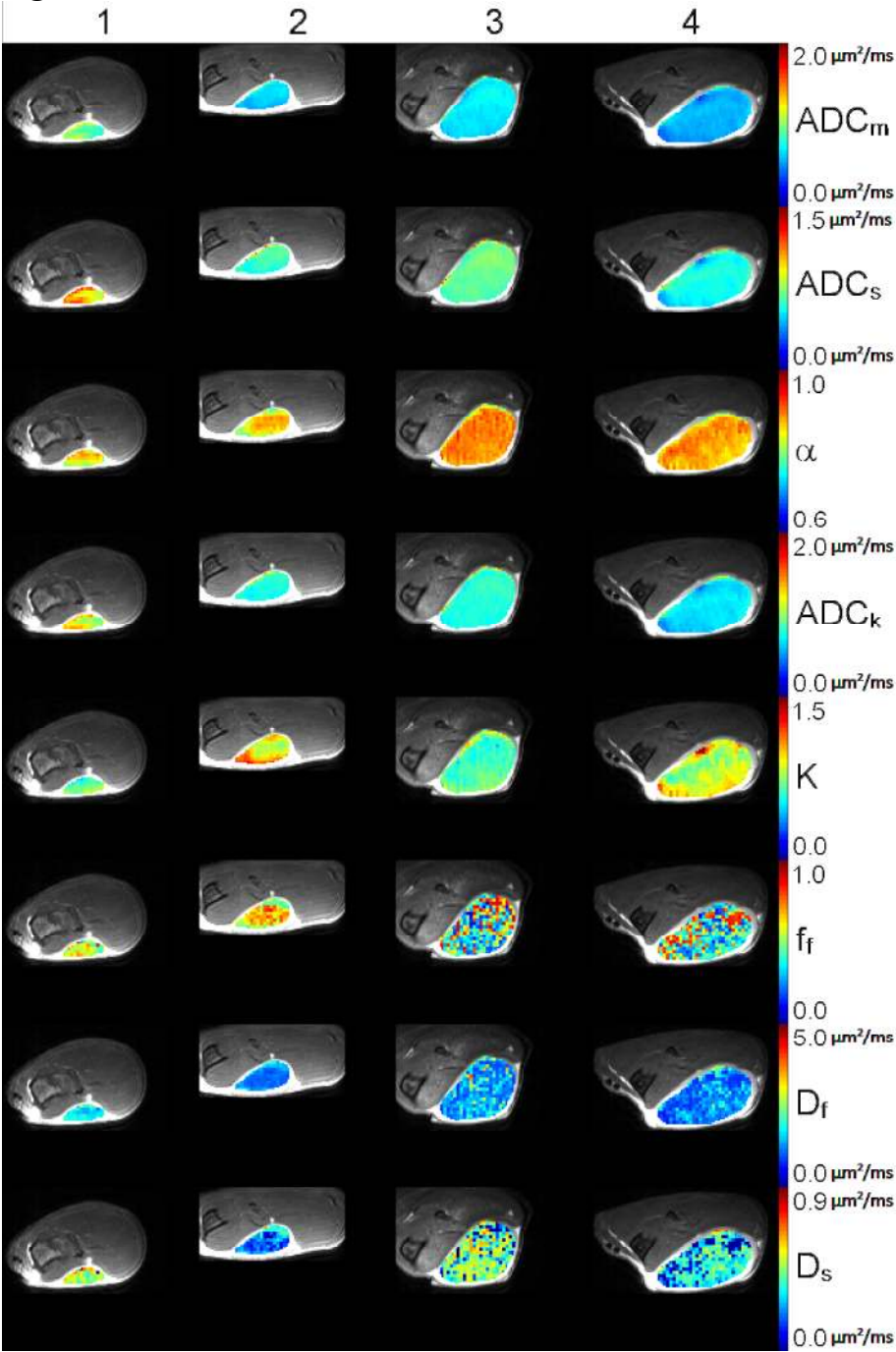


Figure 18

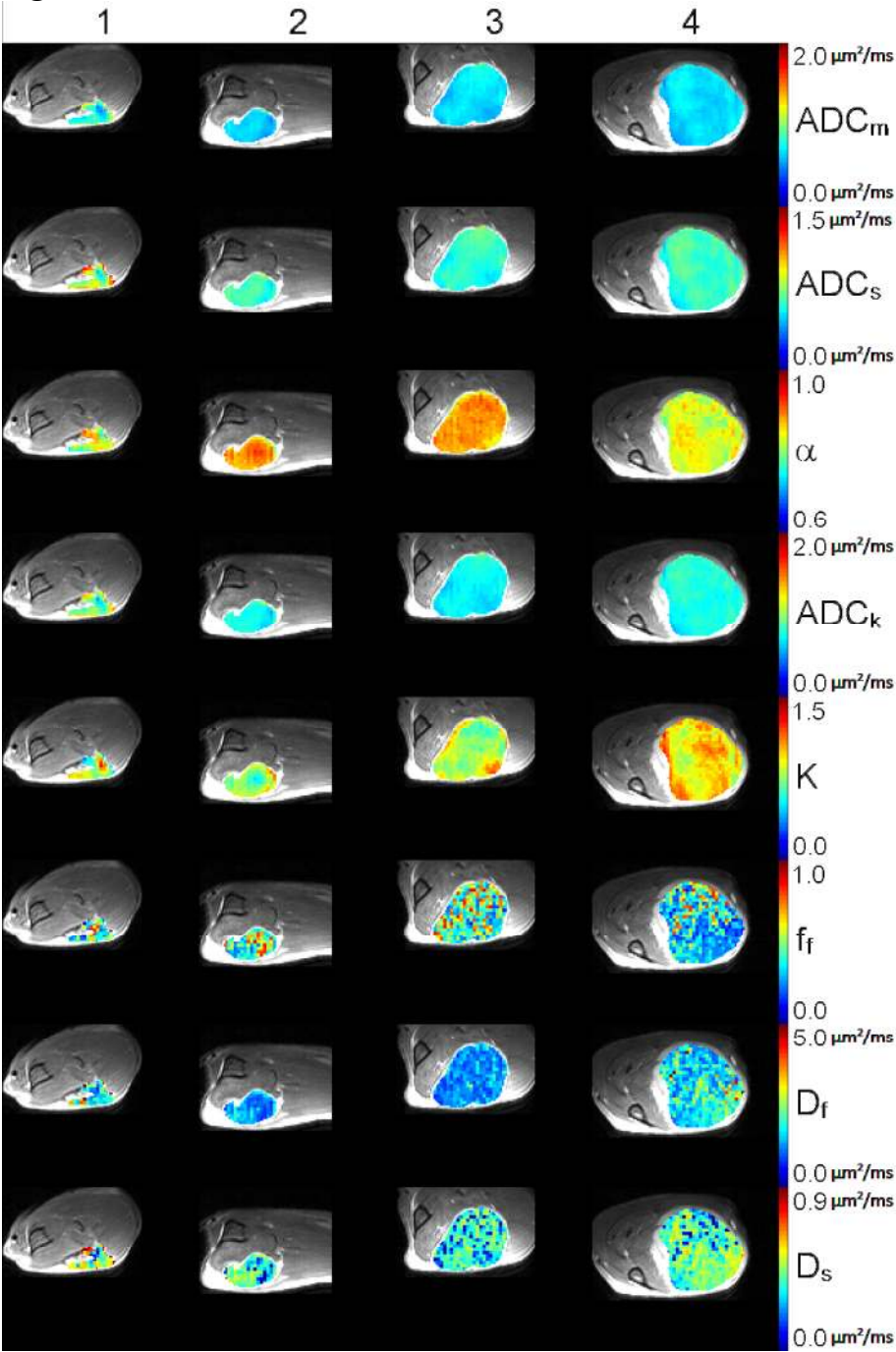


Figure 19

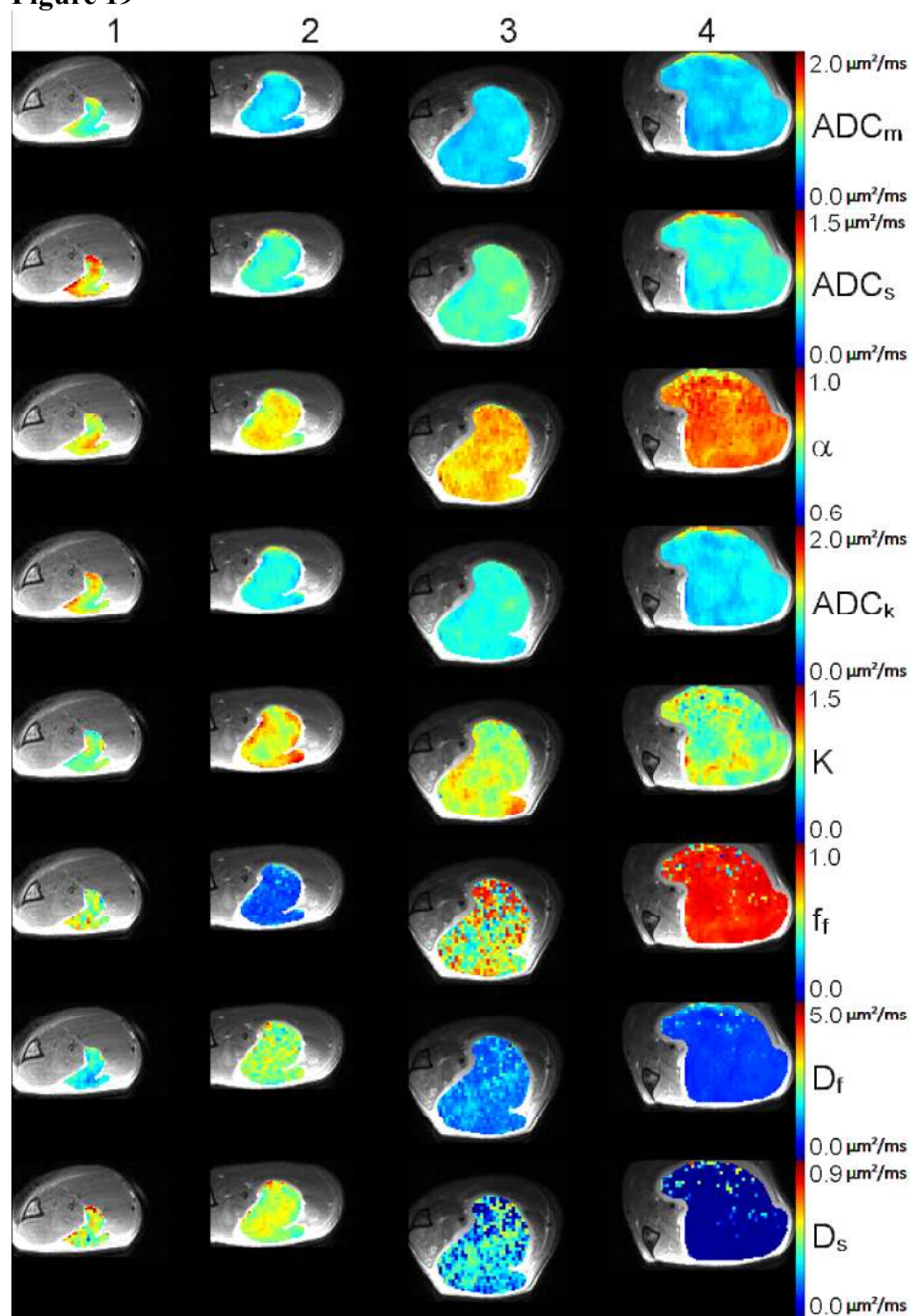


Figure 20

