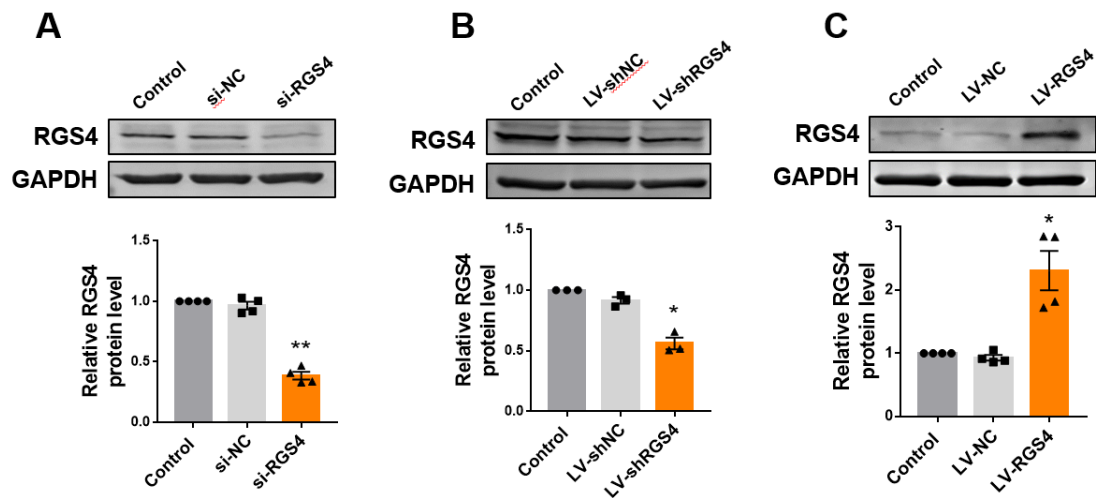


S1: The RGS4 protein level after knocking down and over expression.



S1. (A) Protein level of RGS4 in CFs was assessed by western blot analysis. n=4. ** $p < 0.01$ vs. si-NC. (B) Protein level of RGS4 in left ventricle 7 days after lentivirus injection shRNA was detected by western blot analysis. n=3. * $p < 0.05$ vs. LV-shNC. (C) Protein level of RGS4 in left ventricle 7 days after lentivirus injection was detected by western blot analysis. n=4. * $p < 0.05$ vs. LV-NC.