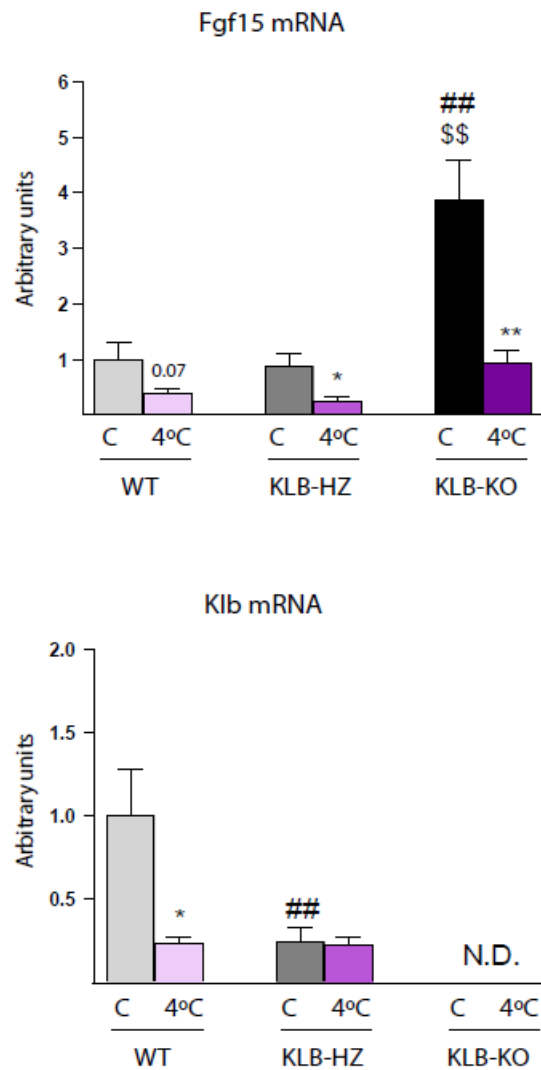


Supplemental Figure S3



Supplementary Fig 3. Effects of total or partial KLB gene invalidation on gene expression of FGF15 and KLB in the ileum with and without cold exposure. Analysis of ileum samples from 3-month-old WT, KLB-HZ and KLB-KO male mice exposed to 4°C environmental temperature for 10 days compared to controls (23°C). Transcript levels are expressed as fold-change relative to WT in the control condition. ND, non-detectable. Data are expressed as means \pm SEM of 6 (WT and KLB-KO) or 4 (KLB-HZ) mice and are given as the fold-change relative to the WT-C value. ## $P < 0.01$, for comparison vs. WT; \$\$ $P < 0.01$ for comparison of KLB-KO vs. KLB-HZ. One way ANOVA with Tukey's post hoc test; * $P < 0.05$, ** $P < 0.01$ for comparing 4°C vs C. Two-tailed unpaired Student's t-test.