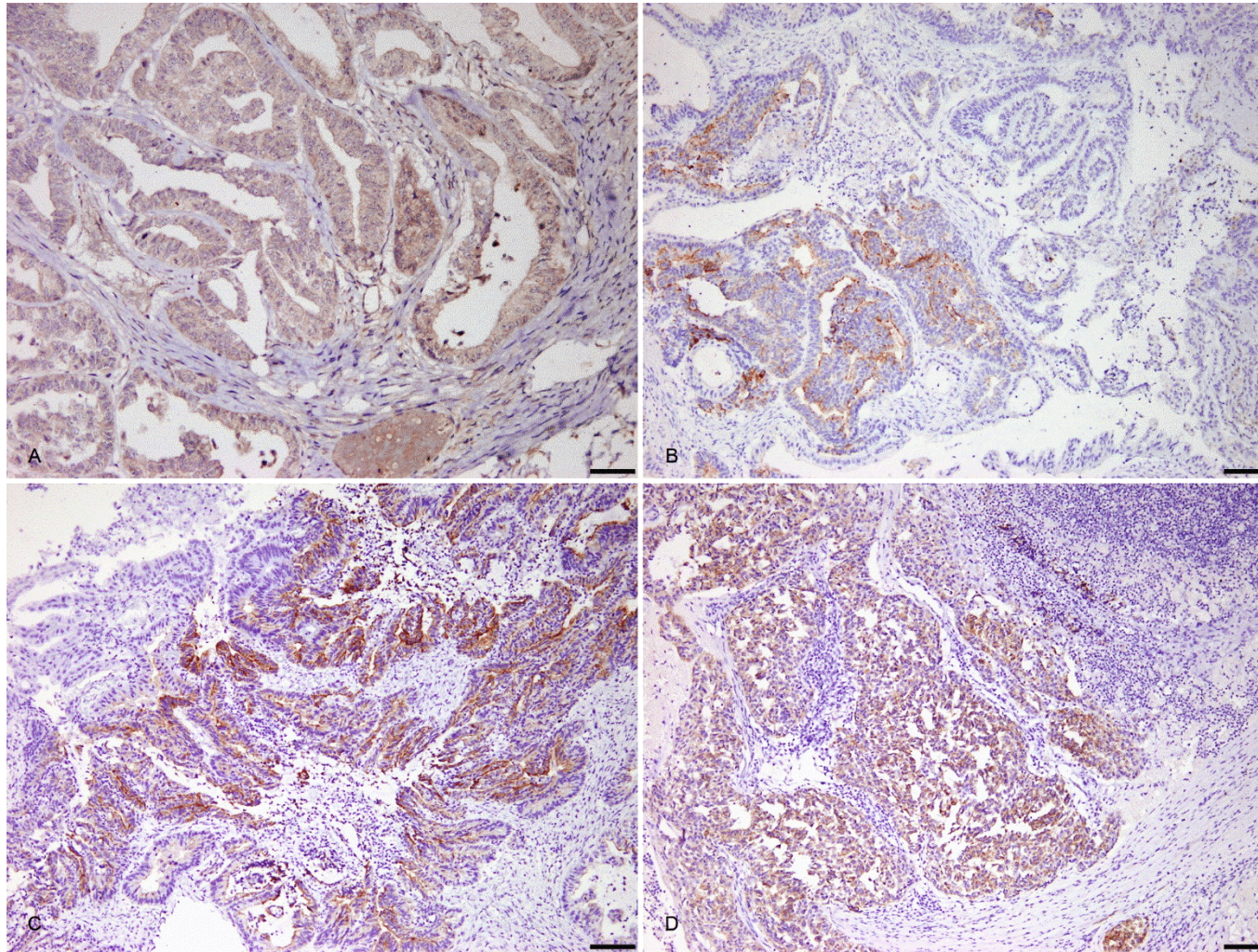


Supplementary Figure 1. Diaphragmatic and pulmonary metastatic lesions in a white rhinoceros. **A.** Neoplastic epithelial cells producing a large amount of mucinous material (asterisk) and proliferating in a tubulopapillary growth pattern on the diaphragmatic muscle layer. H&E. Bar = 100 μ m. **B.** Solid and cribriform mass in the pulmonary parenchyma. H&E. Bar = 100 μ m.



Supplementary Figure 2. Immunohistochemistry for CK7 (cytokeratin 7) and CK20 (cytokeratin 20) in the ovary, diaphragm, and lung of a white rhinoceros. Gill hematoxylin counterstain. **A.** Neoplastic epithelial cells exhibit weak, diffuse positivity for CK7 in

the ovary. Bar = 50 μ m. **B.** Focal, strong positivity for CK20 in the cancerous ovarian epithelial cells. Bar = 100 μ m. **C.** Intense immunostaining for CK20 focally in the metastatic lesion in the diaphragm. Bar = 100 μ m. **D.** Focal, moderate positivity for CK20 in the metastatic pulmonary lesion. Bar = 100 μ m.