

Figure S2

(Original uncropped membrane images used for Figure 3)

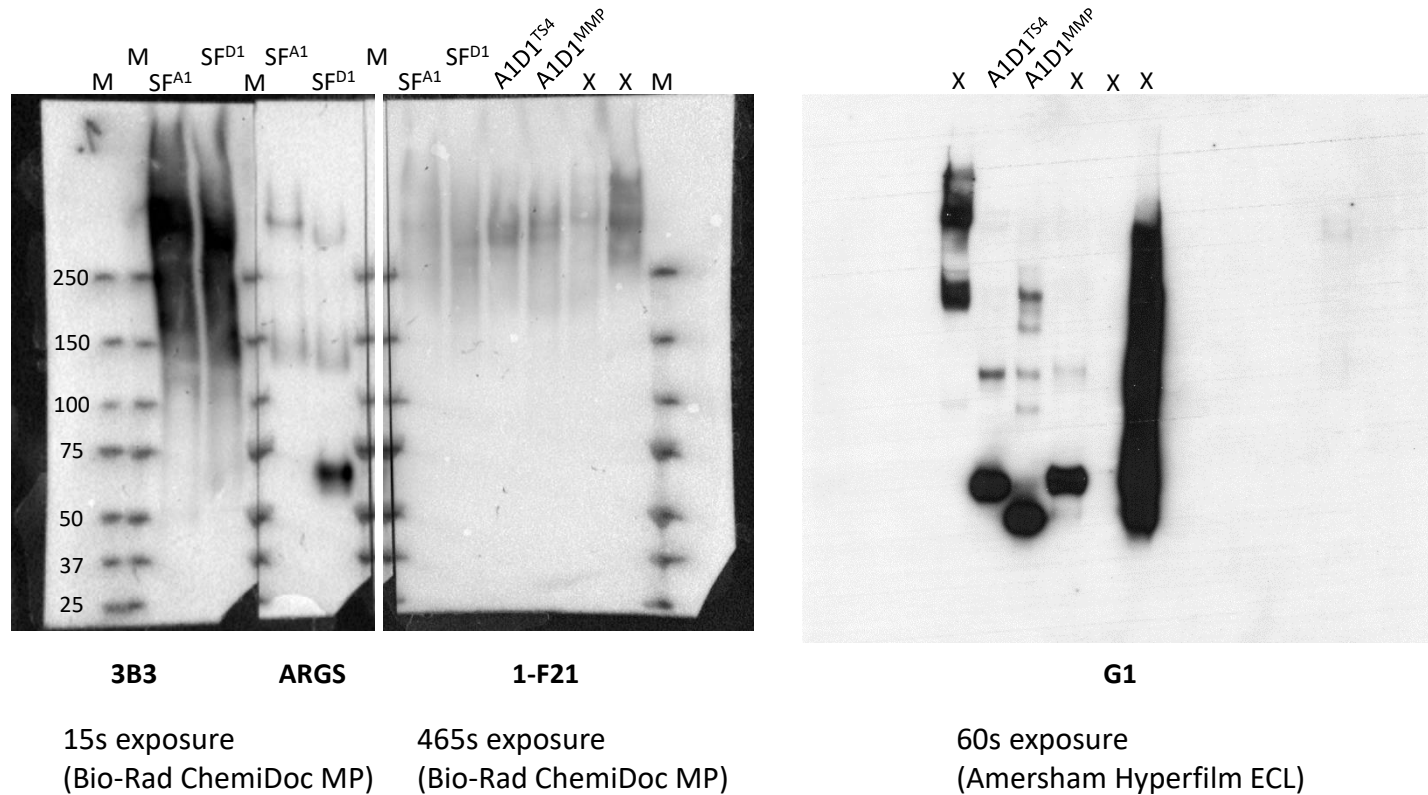


Figure S2. Western blot of synovial fluid and cartilage samples.

Synovial fluid (SF) A1 and D1 samples on membranes probed with antibodies against 6-sulfated chondroitin sulfate stubs (3B3), aggrecan epitope 1-F21 and ARG5-aggrecan. ADAMTS-4 (TS4) or MMP-3 (MMP) *in vitro* digested cartilage A1D1 aggrecan samples on membranes probed with antibodies against aggrecan epitope 1-F21 and G1-domain of aggrecan. The kDa of molecular weight markers (M) are indicated. The images are from different experiments (with different exposures) showing representative signals from full size blotted gel.

X = samples not discussed (not included) in manuscript.