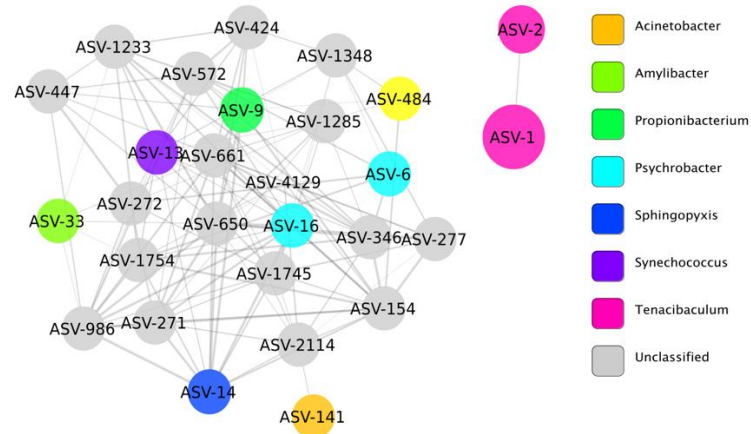


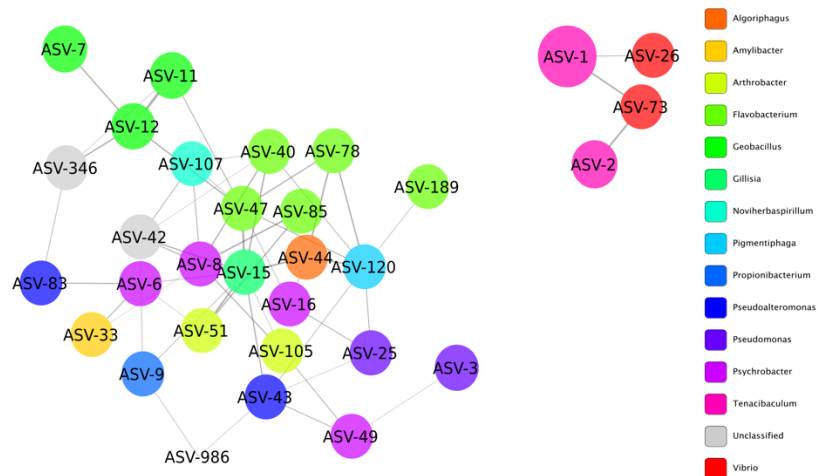
Supplementary Material

1.1 Supplementary Figures

A



B



Supplementary Figure 1. Network of bacterial taxa based on co-occurrence on all healthy fish (A) and surviving fish (B). Each node represents a taxon (ASV) and connections between nodes (or edges) indicate a Spearman correlation coefficient > 0.3 and a correlation p-value corrected with

Bonferroni (<0.05). The size of each node is proportional to the relative abundance of each taxon, and the colour labels indicate different genera. Edge thickness is proportional to the Spearman correlation coefficient between each node.