

US INDIGENOUS DATA SOVEREIGNTY NETWORK



GIDA

Global Indigenous
Data Alliance

ORCID



Randall Akee
UCLA



Jane Anderson
NYU



Stephanie Russo Carroll
University of Arizona



Helena Cousijn
DataCite



Laure Haak
Red Barn Consulting



Maui Hudson
University of Waikato



Katharina Ruckstuhl
University of Otago

INDIGENOUS DATA SOVEREIGNTY

The *right* of Indigenous Peoples and nations to govern the collection, ownership, and application of their own data.

1

Derives from inherent rights to govern their peoples, lands, and resources.

2

Genesis in traditions, roles, and responsibilities for the use of community held information.

3

Positioned within a human rights framework and court cases, treaties, and/or recognition.

4

Knowledge belongs to the collective and is fundamental to who we are as peoples.

For more information see the US Indigenous Data Sovereignty web site usindigenousdata.org.

See also, Kukutai T & Taylor J. (Eds). (2016). Indigenous Data Sovereignty. Canberra: Australian National University Press.

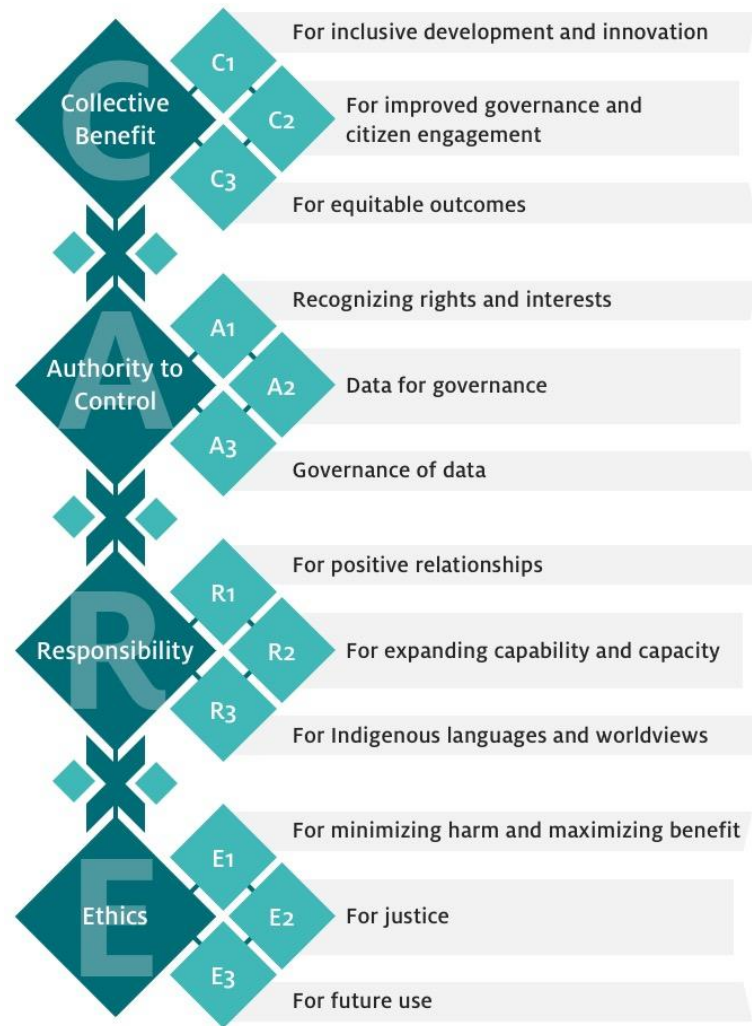
USINDIGENOUSDATA.ORG | @USIDSN



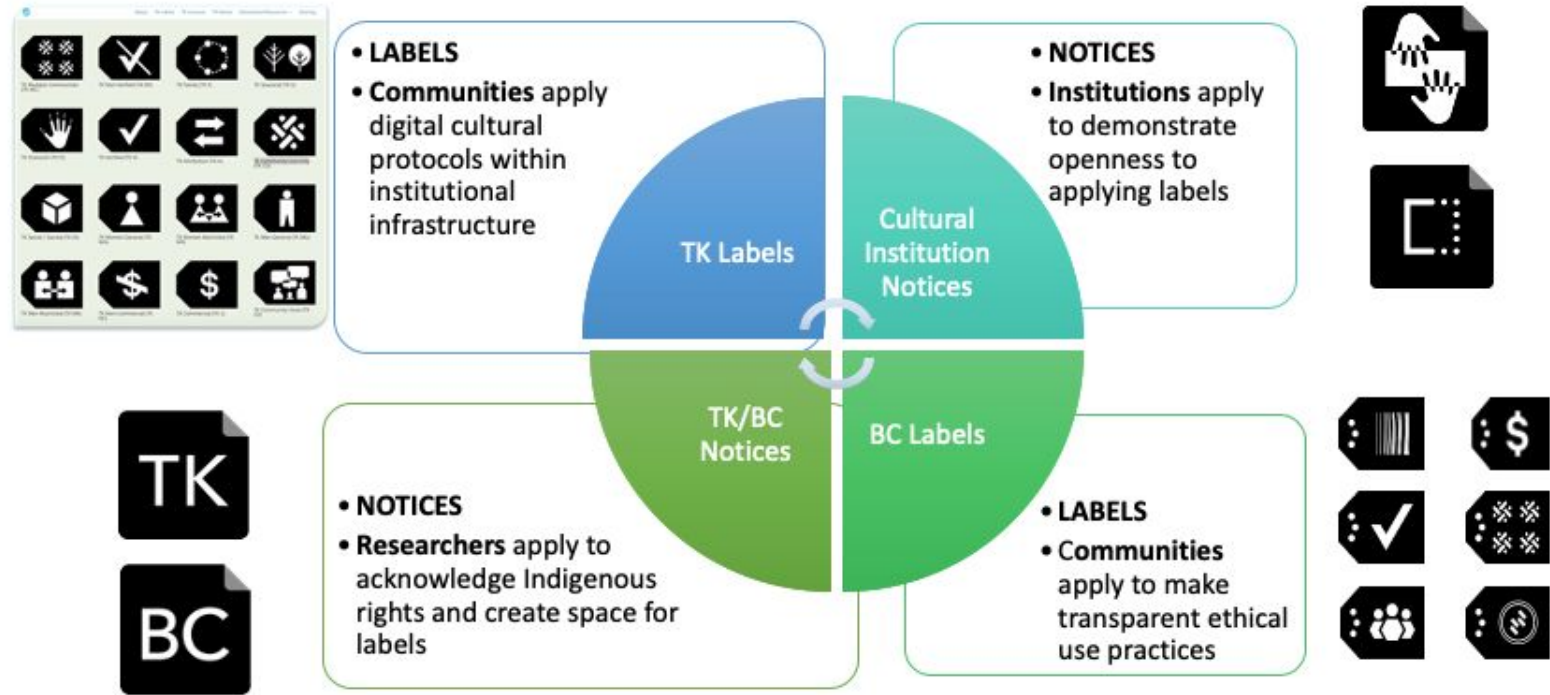
CARE Principles for Indigenous Data Governance

www.gida-global.org/care

Carroll, Stephanie Russo, ..., Maui Hudson "CARE Principles for the Governance of Indigenous Data." Under review at *Data Science Journal*

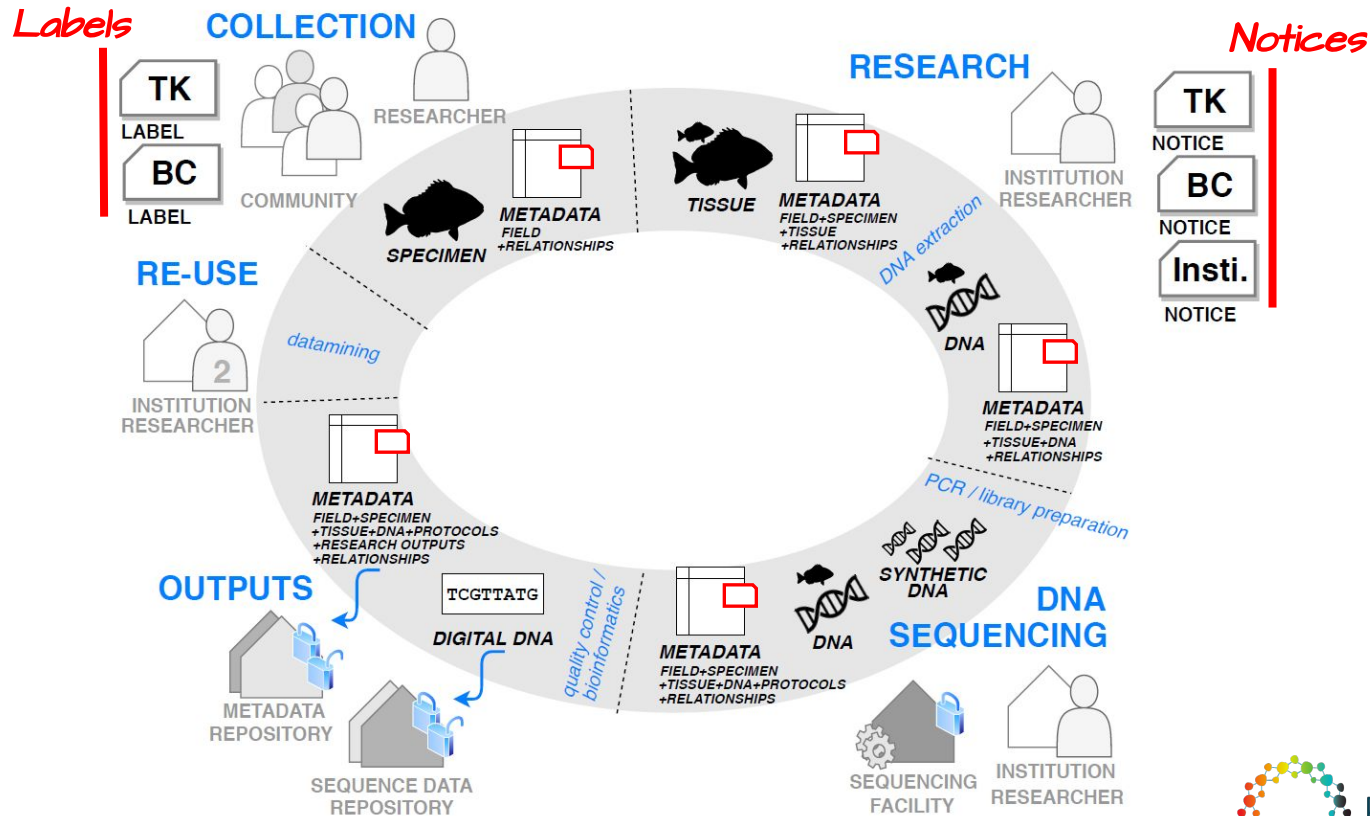


Traditional Knowledge (TK) & Biocultural (BC) Labels + Notices



THE DATA LIFE CYCLE

Biocultural(BC)Labels



Christopher Chaney,

Senior Counsel for Law Enforcement and Information Sharing
United States Department of Justice, Office of Tribal Justice.

Supporting Indigenous Data Sovereignty: Perspective from NIDA



Kathy Etz, Ph.D.

Director, Native American Program
National Institute on Drug Abuse

Scientific Data and Indigenous Data Sovereignty

- **Scientific data:** the recorded factual material commonly accepted in the scientific community as necessary to validate and replicate research findings, regardless of whether the data are used to support scholarly publications
- **Indigenous Data Sovereignty:** the right of a nation to govern the collection, ownership, and application of its own data. It derives from tribes' inherent right to govern their peoples, lands, and resources

AI/AN Research Contexts: Focus on AI/AN

- Study designed to address questions for AI/AN
 - On tribal sovereign lands
 - single or small number of reservations
 - across a large number of reservations
 - Off tribal sovereign lands
 - Or combine reservation and off-reservation sites



AI/AN Research Contexts: General Population Research

- Not specifically focused on AI/AN but will draw into sample
 - Off Tribal Sovereign Lands
 - Further distinguish between studies that:
 - Collect tribal affiliation
 - Have a sample large enough to produce specific findings for AI/AN
 - On Tribal Sovereign Lands
 - Draw reservation into sampling frame

Tribal Policies and Practices for Research

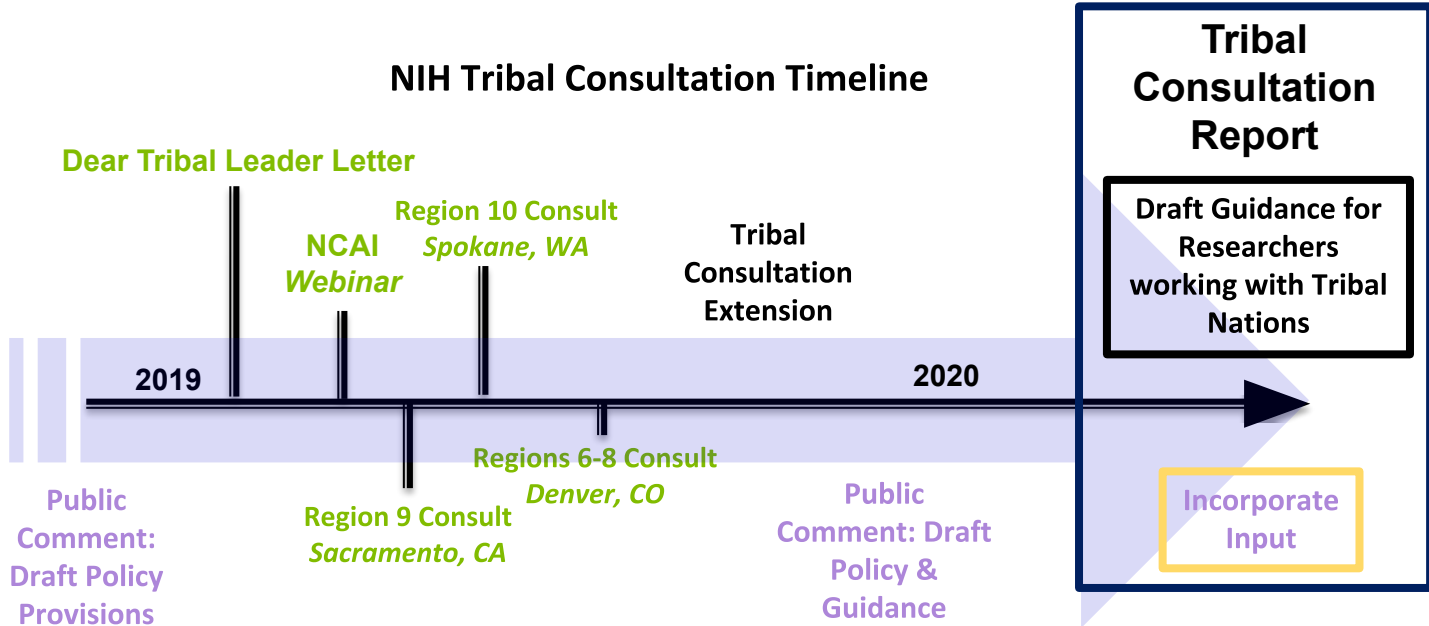
- Predicated on Tribal Sovereignty
- Responsive to Past Research Abuses
- Differs from research conducted with other racial/ethnic groups
- Tribal Resolution Required
- Tribal IRB (if have IRB)
- Research with Tangible Health Benefits
- Community Engaged Research
- Community or Research Advisory Board

Examples NIH/HHS Policies or Guidance Relevant to IDS

- Common Rule (HHS Policy)
- Data management and Sharing Policy
- Single IRB
- Language contained in Funding Opportunity Announcements (FOAs)

NIH TRIBAL CONSULTATION ON DATA MANAGEMENT & SHARING

Work to date and Next Steps



Importance of Addressing Implementation of IDS: Why now?

- New Data Management and Sharing Policy being introduced where broad data sharing is *encouraged*
 - This can conflict with tribal policies or accepted processes
- All of Us Research Program has raised additional questions
 - Has or will likely draw in a large sample of AI/AN
 - Will have sensitive data
 - Tribes have expressed concern with engagement
 - Established Tribal Collaborative Engagement Advisory Group

**When research is on tribal
sovereign lands, the
process and requirements
are mostly clear...**



**And the principles of IDS
apply across all contexts,
however...**



**How is IDS implemented when
off tribal lands and AI AN are
from many tribes?**



Will always defer to tribal law....

- But how is this implemented?

No clear process for obtaining research approval

- Health and Community Centers do not have authority derived from sovereignty
- Approval from each tribe?
 - Would be complicated and costly to implement, potentially introducing a barrier to participation in research
- What about when tribal affiliation data are not collected?
 - Must be collected? Must be verified?
- How proceed when laws, policies and infrastructure for research are at different stages – and are different - among tribes?

Other Questions

- Identification
 - Self-identification and/or verify tribal enrollment?
 - Mark data as self-identified?
- Who enforces tribal policies?
 - The NIH? Or tribes?
- How does the intersection of tribal authority and individual autonomy relate to research consent and sharing of data?

Support and Tools Needed

- Guidance document on AI AN research and data ownership/sharing
- Ethics statement for all public use datasets drawing attention to unique factors to consider for AI AN data?
- Trainings or courses on collection and use of AI AN data?
 - E.g., NCAI board game on research decisions

Support and Tools Needed

- Specific recommendations for when collecting data off tribal lands
 - When AI/AN are the focus
 - When a large number drawn into the sample
 - When a low number drawn into the sample
- Tribal listening sessions and consultations on how to proceed across studies

What does IDS and community engagement look like in each of these contexts?

Principles for AI AN research and AI AN Data use?

- Perhaps principles better than policies right now, because contexts vary significantly
- What principles should be included?
 - Protect and Benefit
 - Data in service to tribes and AI/AN people
 - Community Engagement
 - IDS Strategies

AMERICAN INDIAN AND ALASKA NATIVE RESEARCH IN THE HEALTH SCIENCES:

*Critical Considerations for the
Review of Research Applications*



Michael Pahn,

Head of Archives and Collections Digitization at the
Smithsonian Institution's

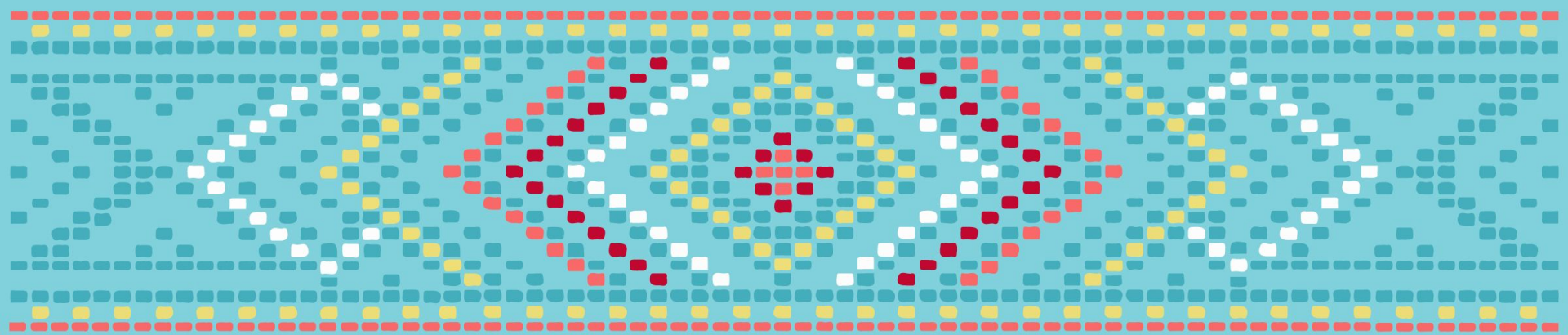
National Museum of the American Indian Archive Center

Discussion, hosted by

Randall Akee

&

Maui Hudson



US INDIGENOUS DATA SOVEREIGNTY NETWORK

Indigenous Data Sovereignty: Activating Policy and Practice



GIDA

Global Indigenous
Data Alliance

ORCID