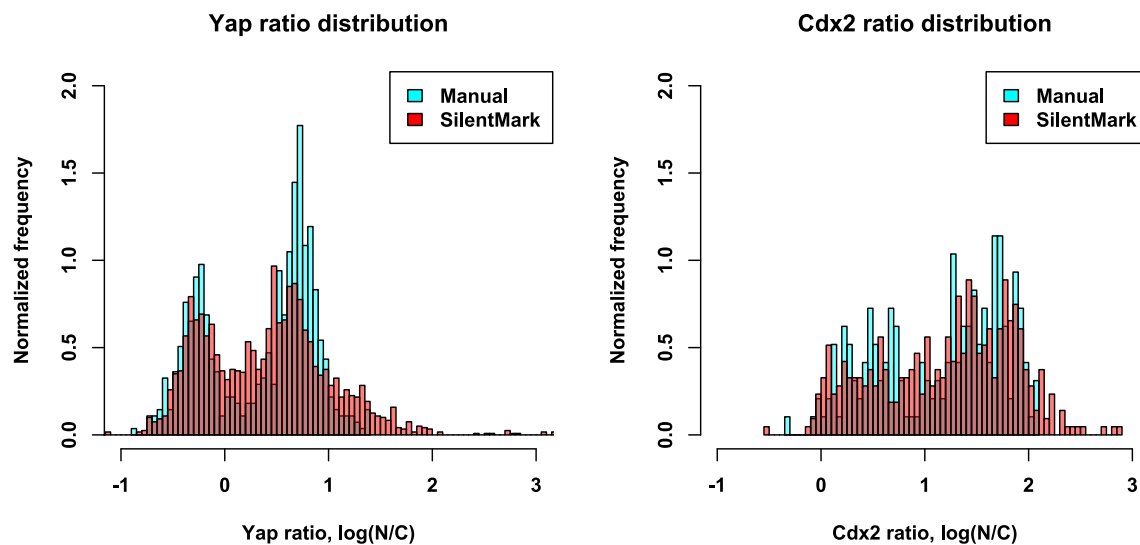


Spatial protein analysis in developing tissues: a sampling-based image processing approach

Karolis Leonavicius, Christophe Royer, Antonio M. A. Miranda, Richard Tyser, Annemarie Kip and Shankar Srinivas*

Department of Physiology Anatomy and Genetics, University of Oxford, Oxford OX1 3QX, UK



Supplementary Figure S1: Comparison of manual cell outlining and SilentMark performance. Distributions of measured values of Yap and Cdx2 nuclear/cytoplasmic ratios.