

Figure S1. FTIR spectrum of Sb-SnO₂ nanocrystals.

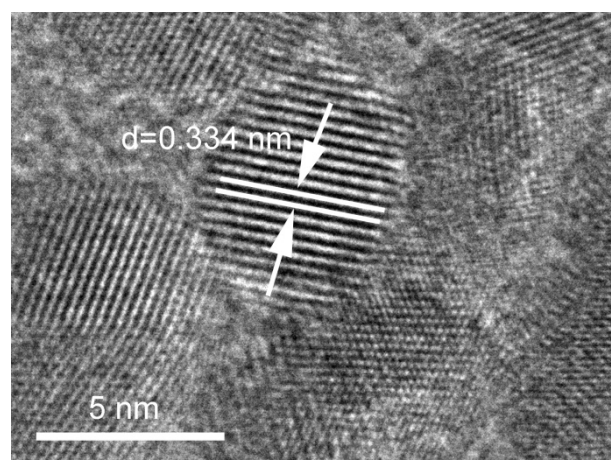


Figure S2. HRTEM image of Sb-SnO₂ nanocrystals.

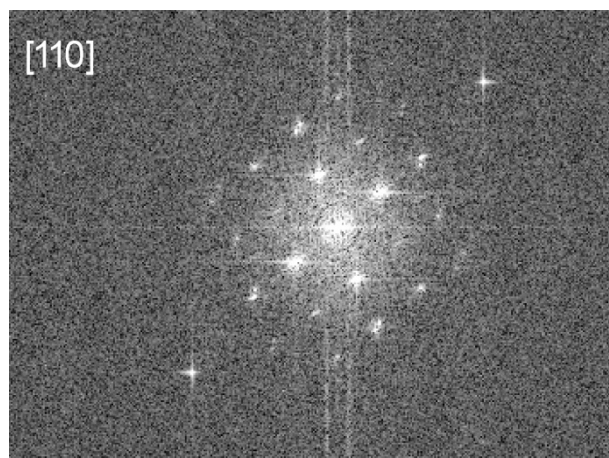


Figure S3. Fast Fourier transform image of Sb-SnO₂ nanocrystals obtained from Figure S2.

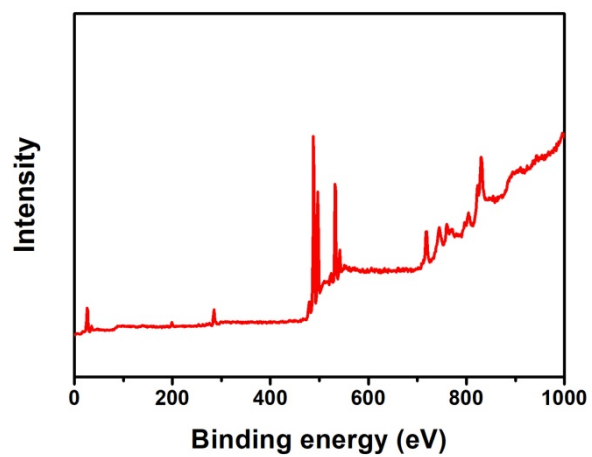


Figure S4. XPS spectra of Sb-SnO₂ nanocrystals.

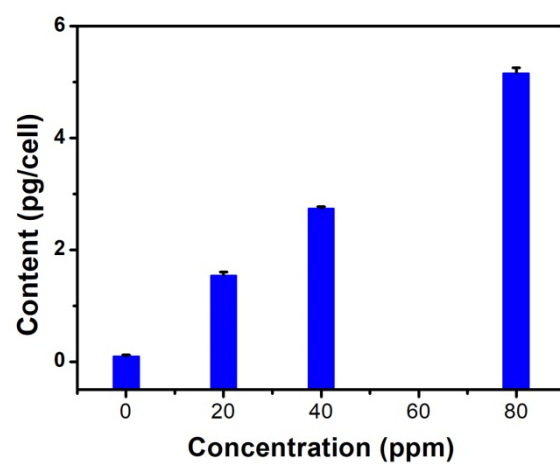


Figure S5. Cellular uptake in vitro of the Sb-SnO₂ nanocrystals with different concentrations.

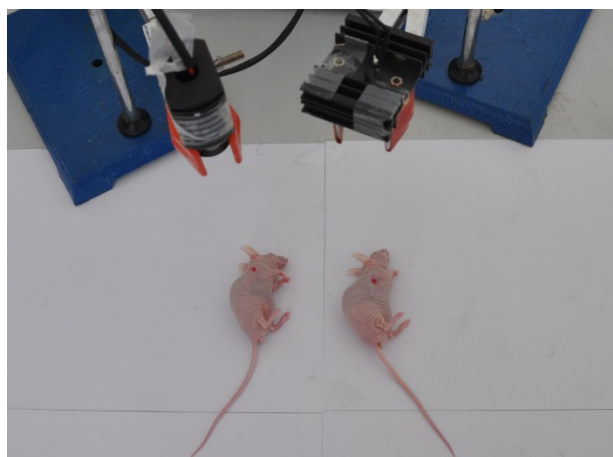


Figure S6. Photograph showing the typical experimental setup for in vivo photothermal therapy of cancer cells.

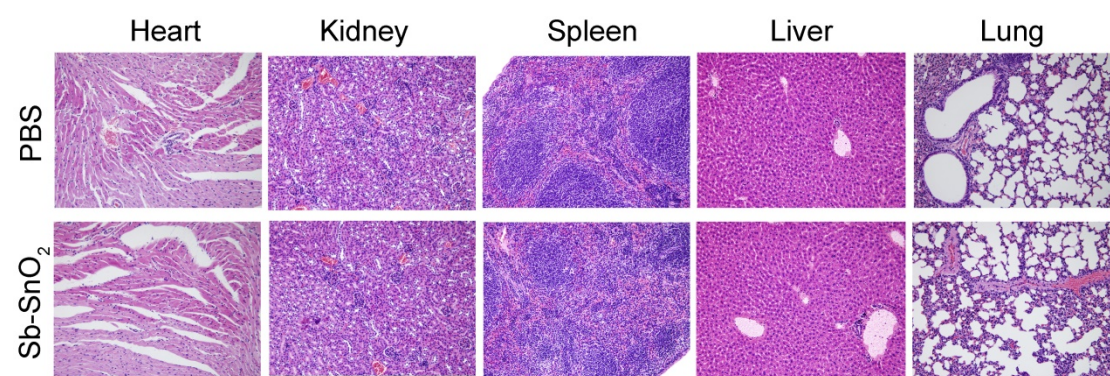


Figure S7. H&E stained slices of main organs. Magnification: 100 times.

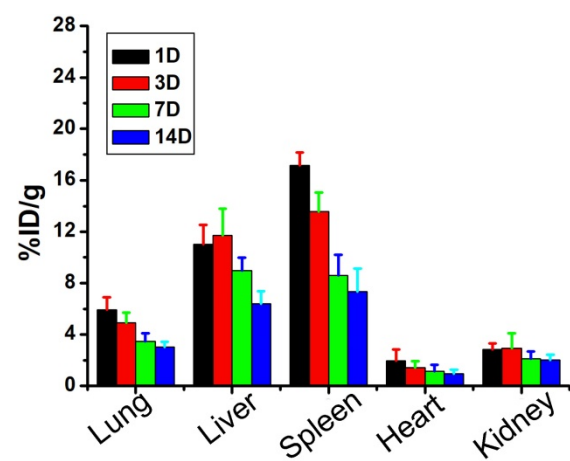


Figure S8. Biodistribution of tin determined by ICP-AES (n = 4) in major organs.