

A

site A

site B

site C

Number of fish

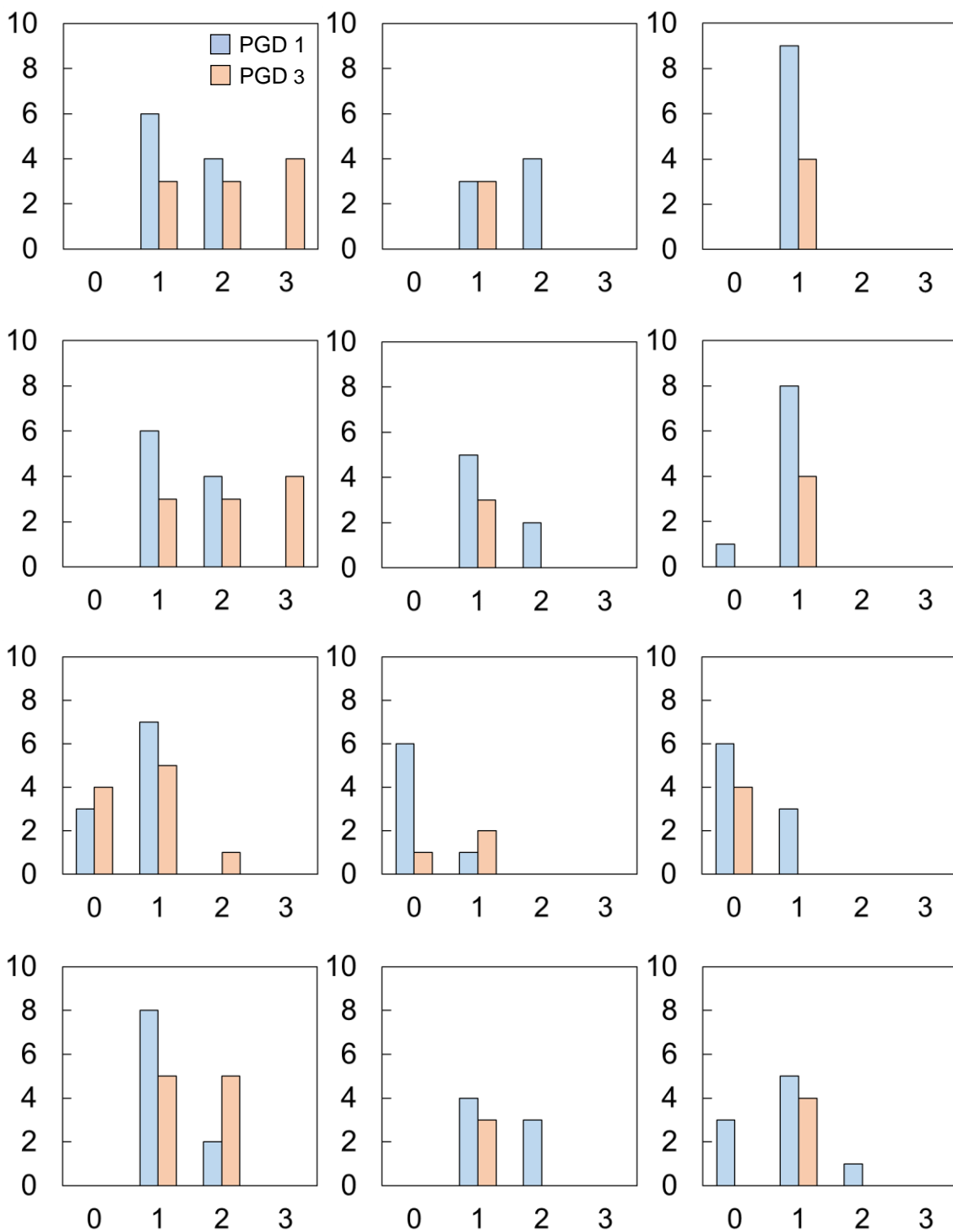
LH

LF

LO

CA

Histopathological score



**B**

site A

site B

site C

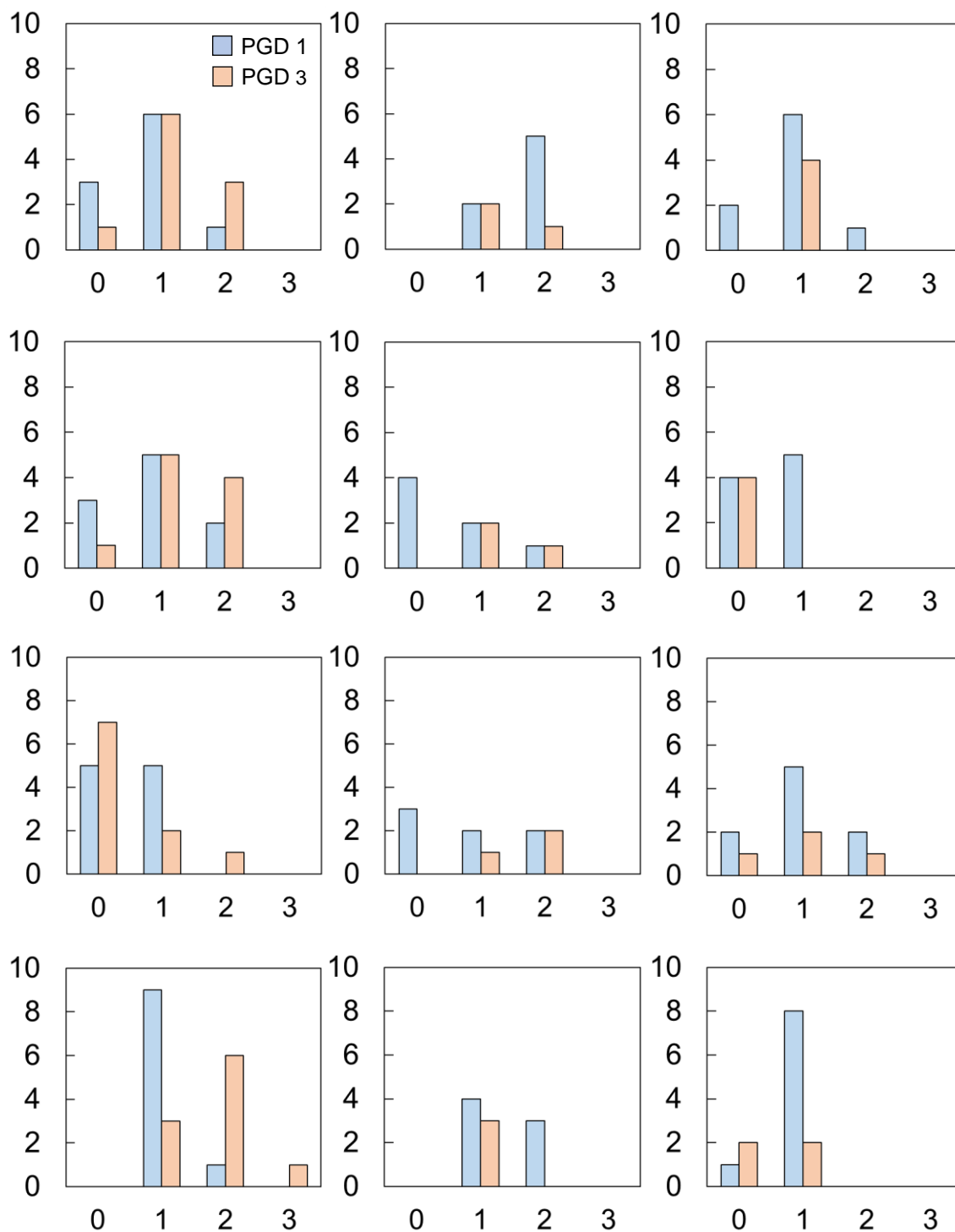
Number of fish

in

eg

cc

cd



Histopathological score

C

site A

site B

site C

Number of fish

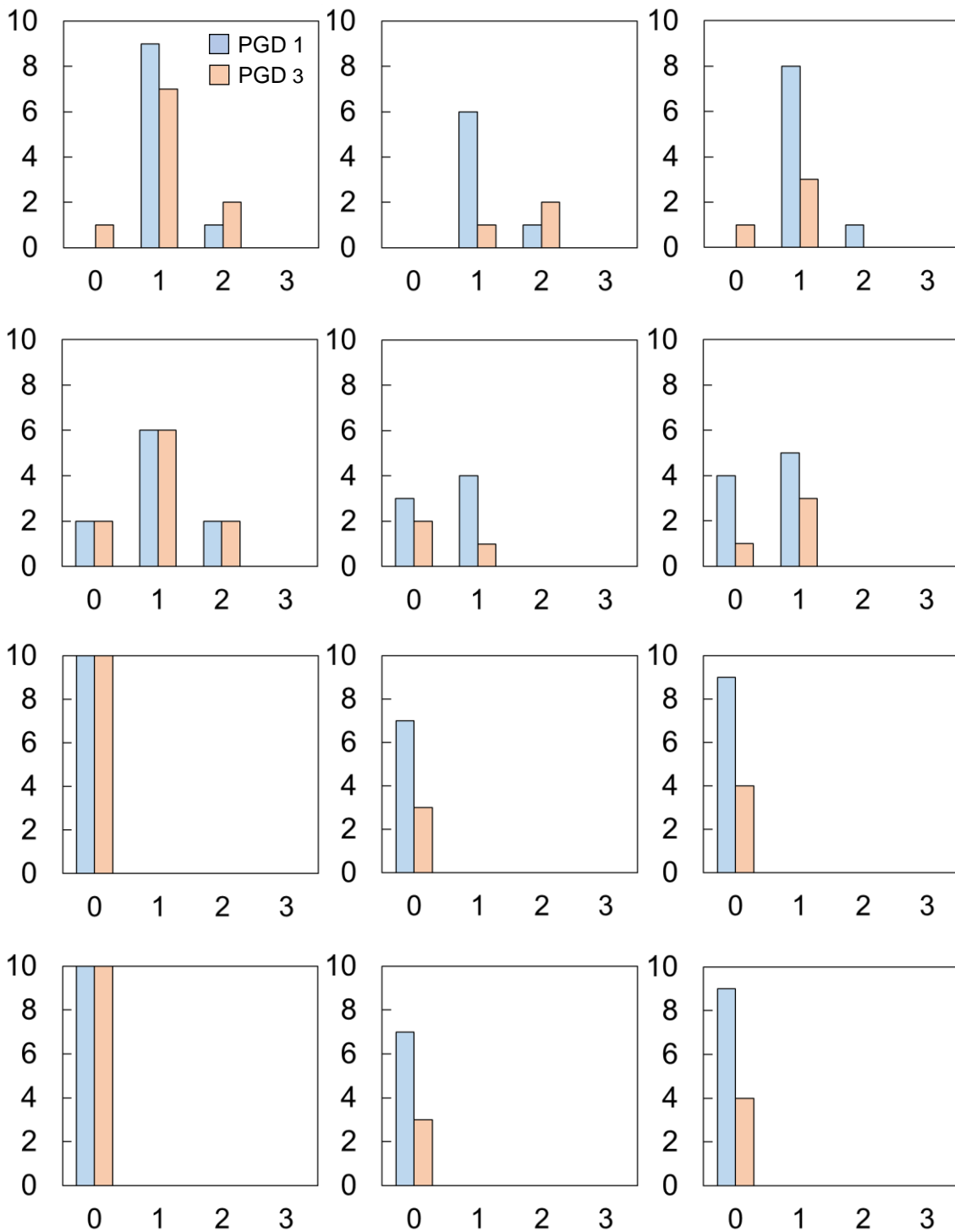
ib

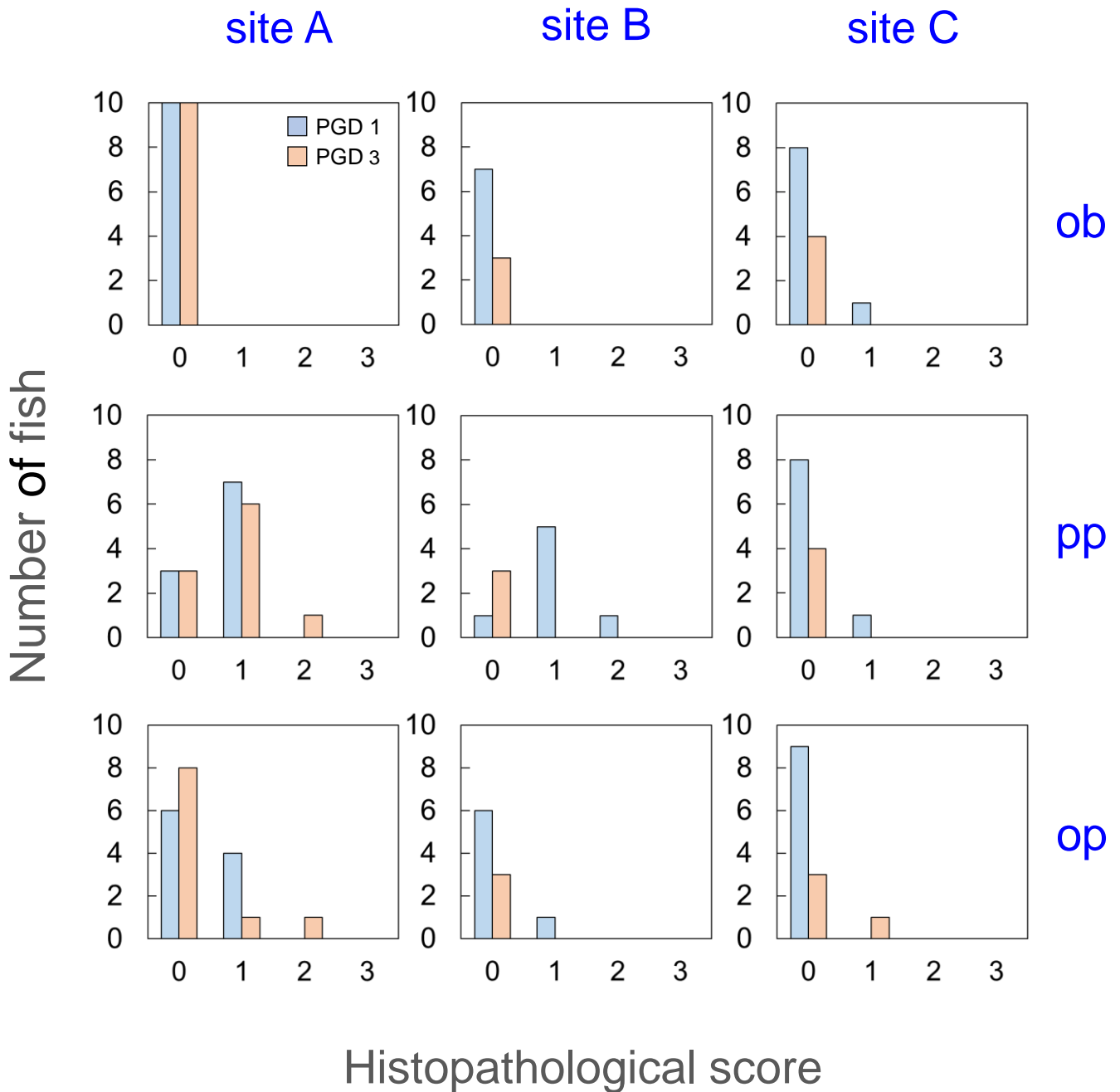
ch

bE

bT

Histopathological score



**D**

**Supplementary Figure 2.** Number of fish with histopathological scores per group (PGD 1 and PGD 3) and site (A, B and C) for (A) gill lamellar hyperplasia (LH), lamellar fusion (LF) lamellar

oedema (LO) and cellular anomalies (CA), (**B**) gill inflammation (in), eosinophilic granular cells (eg), chloride cells (cc) and circulatory disturbances (cd), (**C**) gill interlamellar blood (ib), cellular hypertrophy (ch), *Epitheliocystis*-like bacteria (bE) and *Tenacibaculum*-like bacteria (bT) and (**D**) presence in the gill of other bacteria (ob), protist parasites (pp) and other parasites (op). For details, see Table 3 and Supplementary Table 5.