

Supplementary Material:
Seasonal observations at 79°N Glacier (Greenland)
from remote sensing and *in situ* measurements

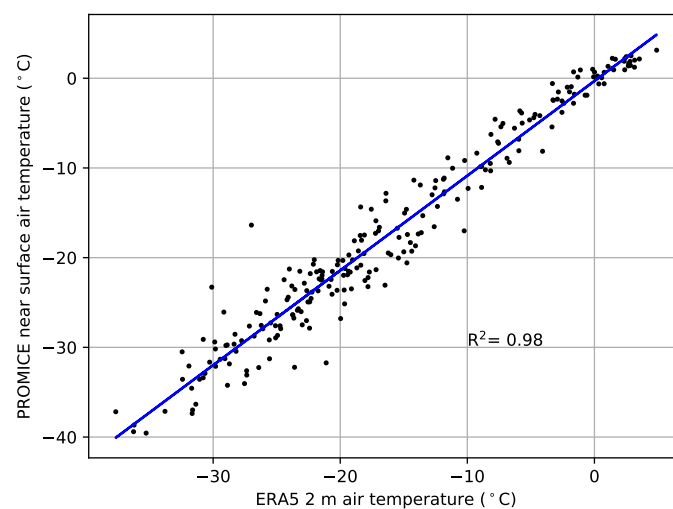


Figure S1. Scatter plot of near surface air temperature measured at PROMICE AWS KPC_U (Fausto and van As, 2019) and ERA5 2 m air temperature reanalysis data (Hersbach and Dee, 2016) for the time interval shown in Figure 2 of the main manuscript.

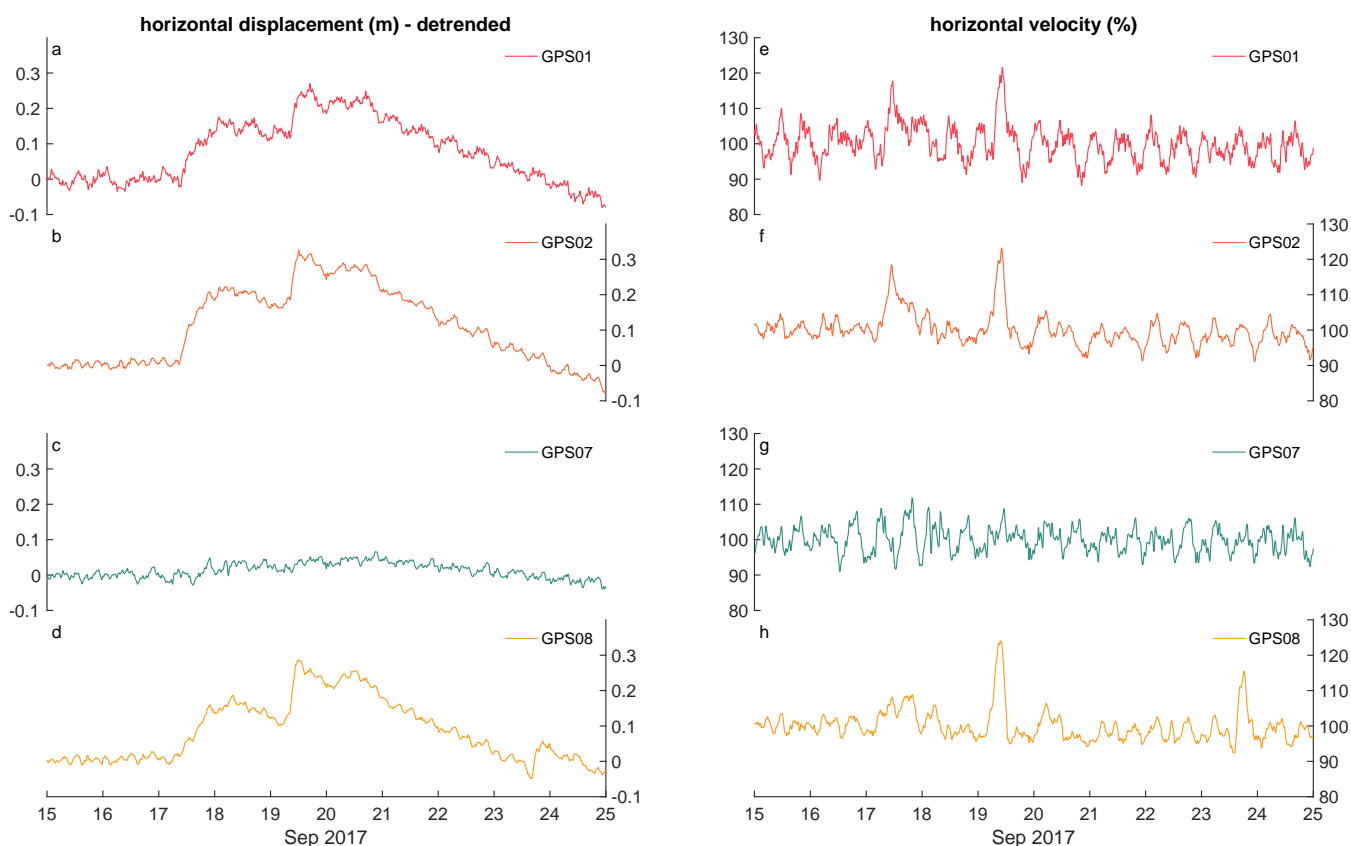


Figure S2. GPS derived horizontal surface displacements (a-d) and relative surface velocities (referenced to average velocities of 15 and 16 September 2017, e-h) focused on September 2017. Data are averaged over 4h.

REFERENCES

- Fausto, R. and van As, D. (2019). Programme for monitoring of the Greenland ice sheet (PROMICE): Automatic weather station data. Version: v03, Dataset published via Geological Survey of Denmark and Greenland. DOI: <https://doi.org/10.22008/promice/data/aws>
- Hersbach, H. and Dee, D. (2016). ERA5 reanalysis is in production, ECMWF Newsletter, 147, 7