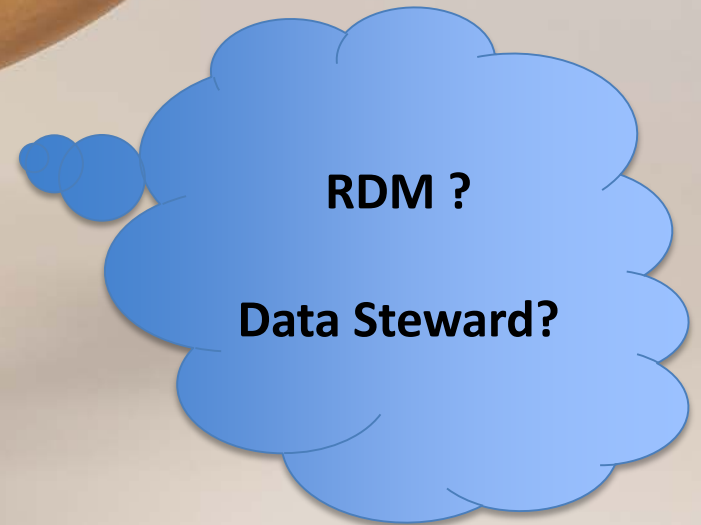
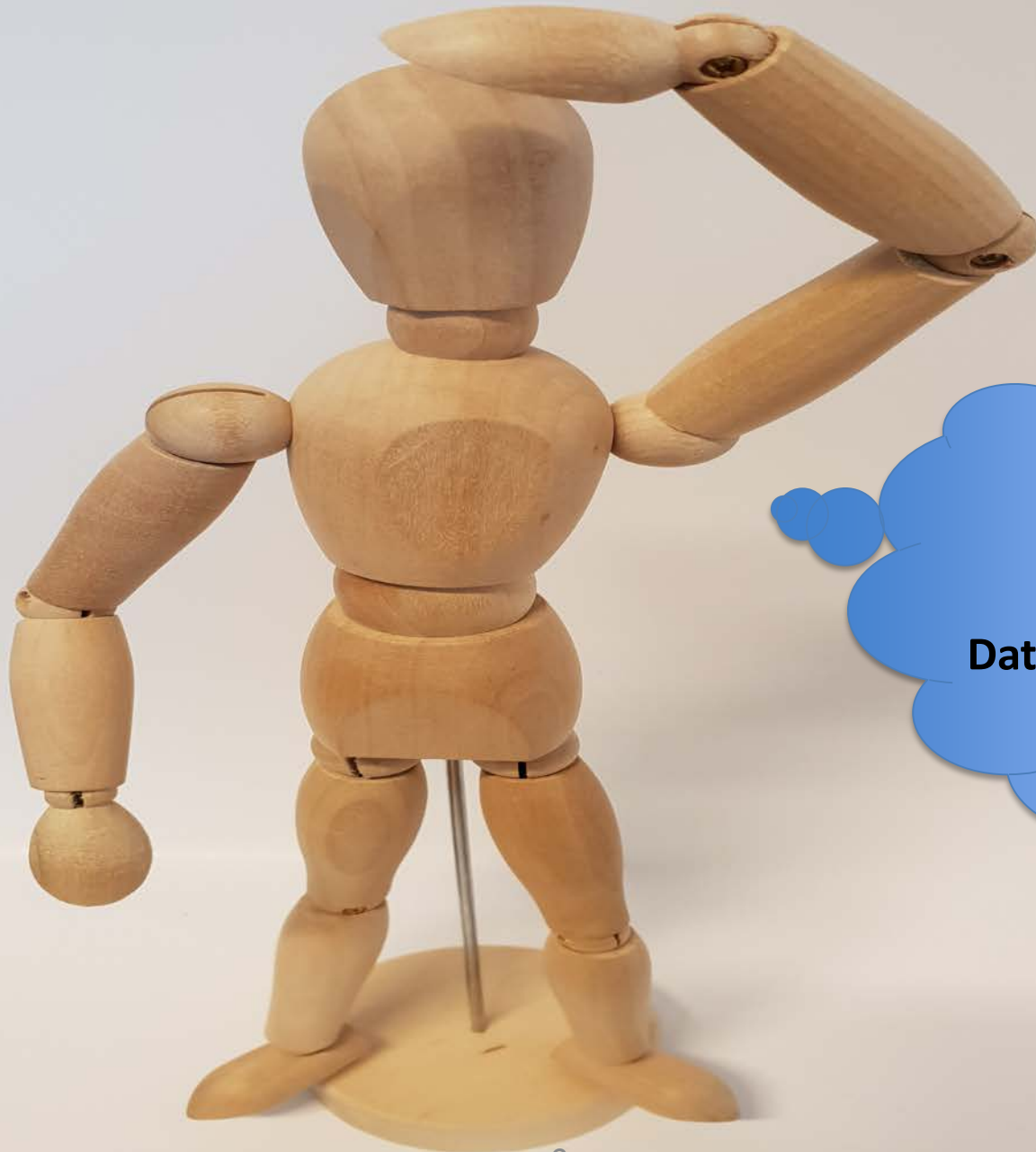


...from objects to assets^{[1](#)}

RDM introduction Innovation Management, RSM

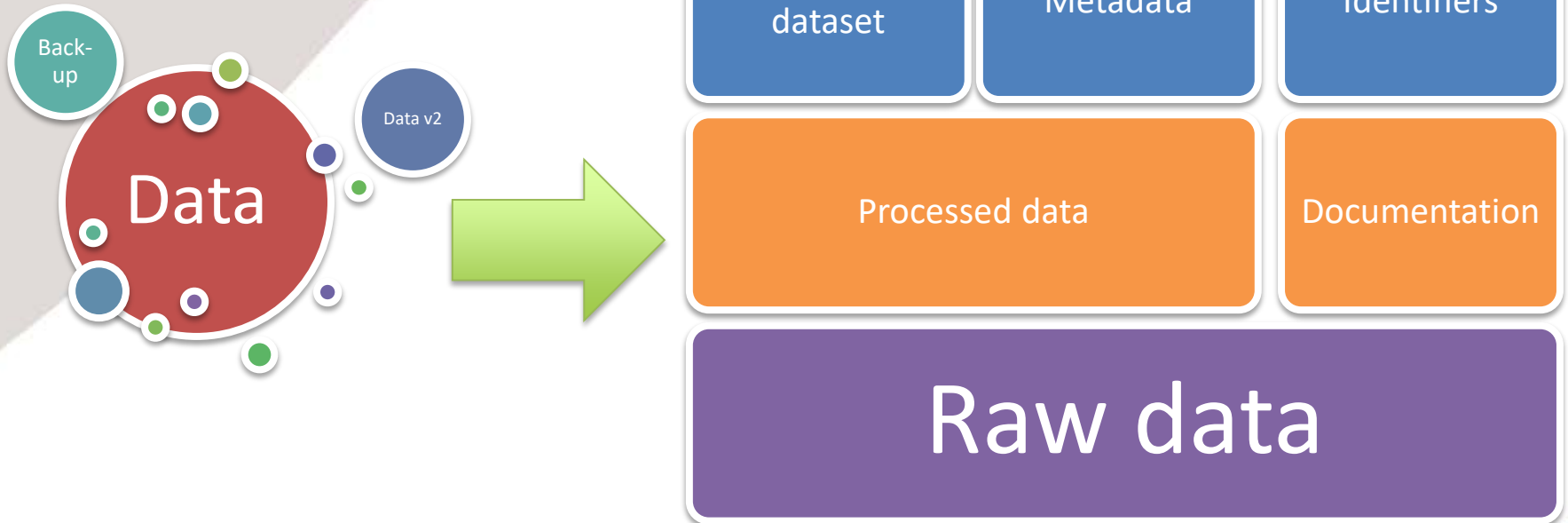
Miriam Braskova, 16.01.2020





Understanding





Data GP



- Data Steward
 - consult and support your data management needs during whole research lifecycle:
 - Funding
 - Preparation
 - Analysis
 - Publication
 - Archiving
 - Liaison with other relevant parts of organisation and represent your voice and DM needs
- Other expertise - Legal Counsel, Software Engineering & Consulting, Privacy Officer

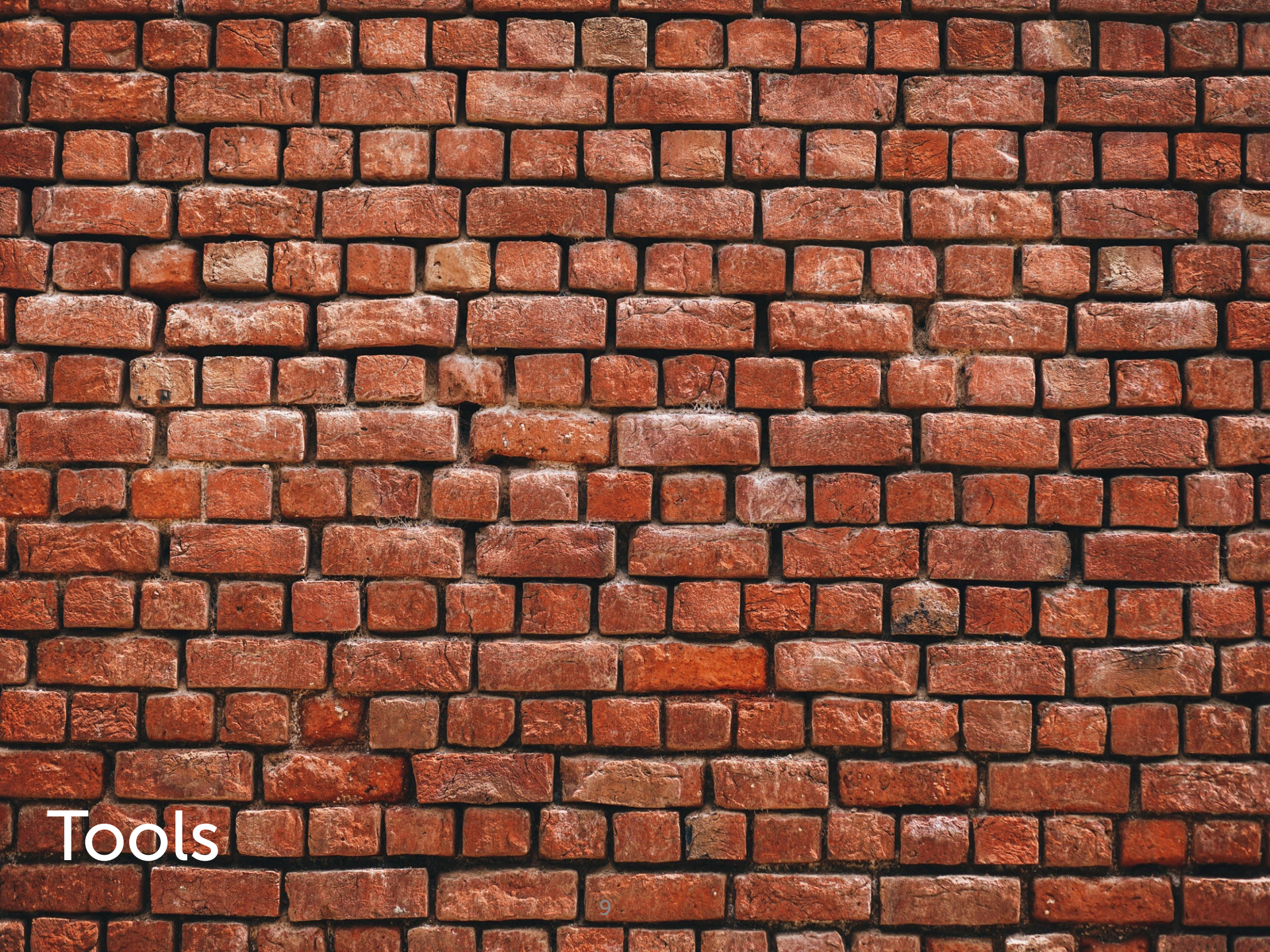
Why RDM

- **Internal benefits**

- ☐ Current - effective research design, data collection, analysis and publishing
- ☐ Future – [FAIR](#) (Findable-Accessible-Interoperable-Reusable) data

- **External benefits**

- ☐ Transparent/open
- ☐ Identified, cited, tracked
- ☐ Reproducible and replicable
- ☐ Meeting international standards
- ☐ Compliant with policies (e.g. funder)



Tools

Tools available

- **Data Management Plan** (template and consultation)
- Data transfer - [SURFfileSender](#)
- [Working storage](#) – SURFDrive, Dropbox
- **Data publication** – [ERIM/EUR data repository](#)
 - DOI + authorship
 - Citable and trackable
 - for all types of research outputs (data, SW, schema, protocol, case study, ...)

Policies available

- Netherlands [Code](#) of Conduct for Research Integrity
- ERIM policies
 - [TOP 10 to DO](#) Basic Privacy and Security for Your Data
 - Basic Principles for [Responsible Research Data Management](#)
 - [Personal Data and Privacy Impact Assessment](#) in Research

RI/DM for PhDs

Preparation

- Welcome day teaser(s)
- Scientific Integrity course
- Research data management workshop

1st year assessment

- Research data management plan – prepare, review, submit

Mid-term evaluation

- Research data management plan – review, re-submit
- Privacy assessment report – if applicable
- Ethical review approval – if applicable

Research outputs

- Apply FAIR (Findable, Accessible, Interoperable, Reusable) principle
- Be in line with journal policies
- Manage research towards reproducibility
- Strive for open science – open access publishing (RePub), open research data (EUR data repository)



Kathryn Sharples

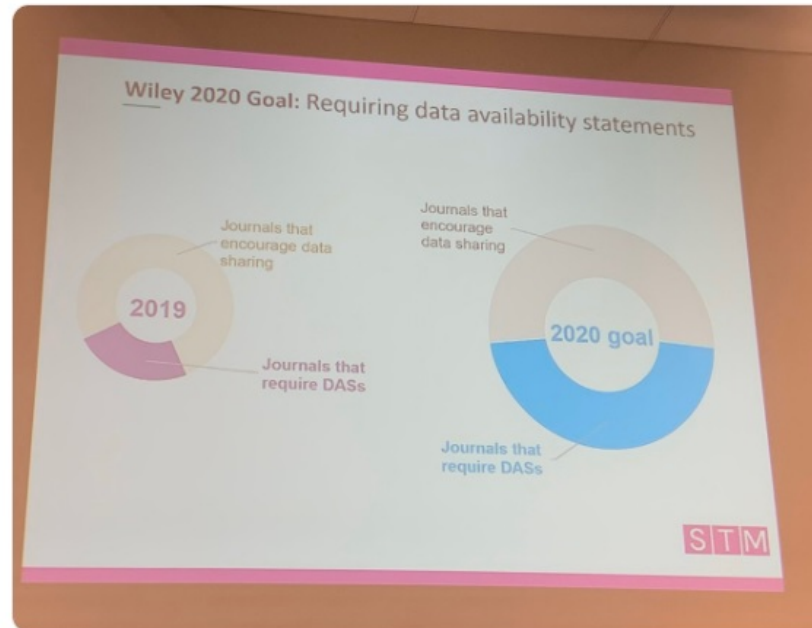
@ksharples

Follow



Pragmatic advice re making progress towards open data from [@chrisgrafpub](#): "Start simple, start where you can, and build from there!"

This year [@wileyinresearch](#) will double the number of journals requiring DAS. [#APE2020](#)
[#acadAPE](#)



1:07 AM - 15 Jan 2020

5 Retweets 9 Likes



↻ 5



9

Have a DM question? Get in touch!



Miriam Braskova

Data Steward

T6-14

T: +31 (0)10 4082940

E: braskova@rsm.nl