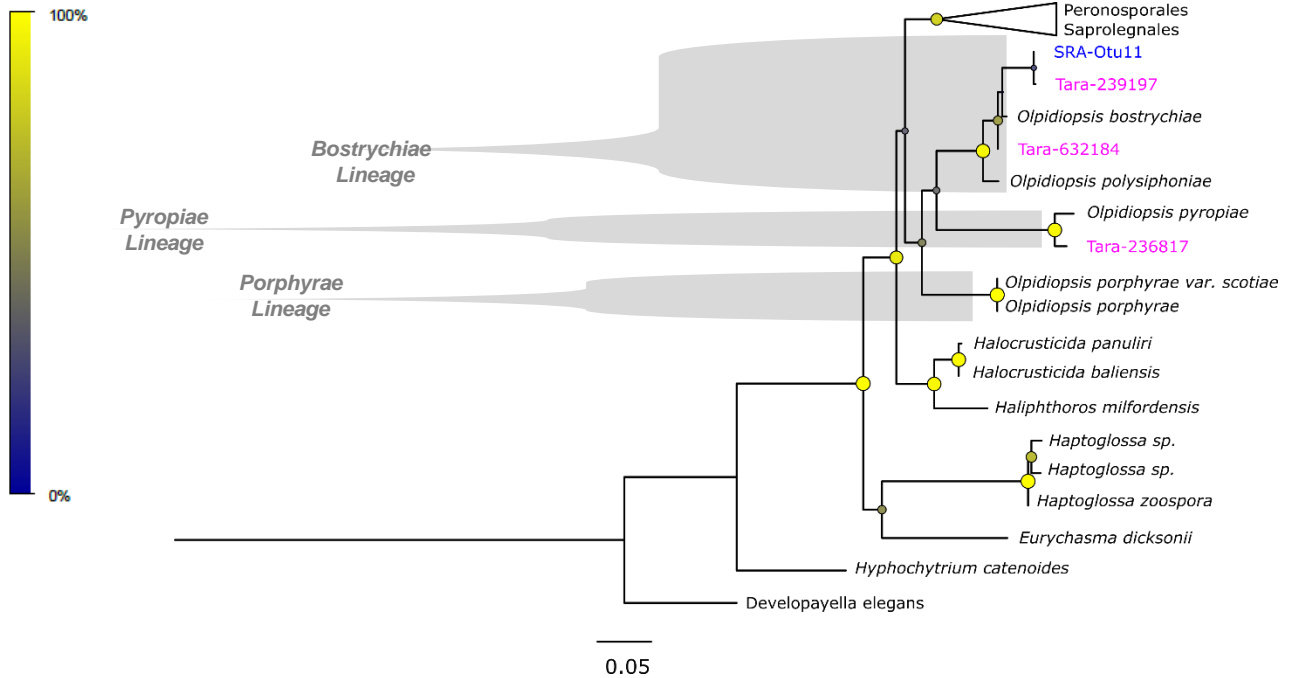
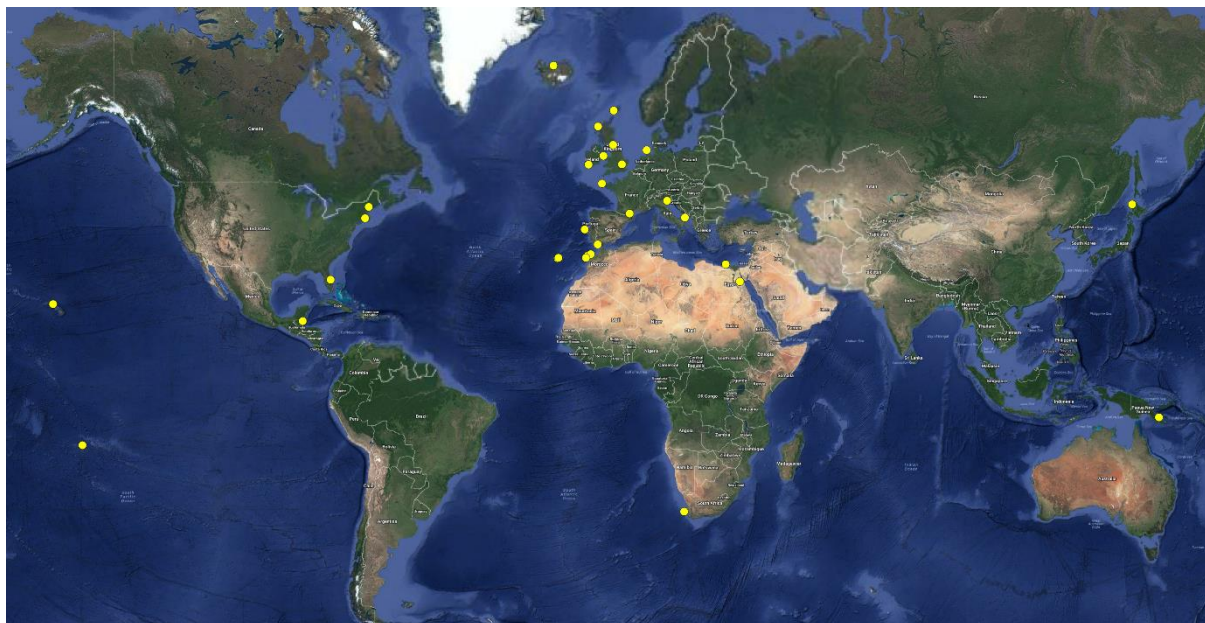


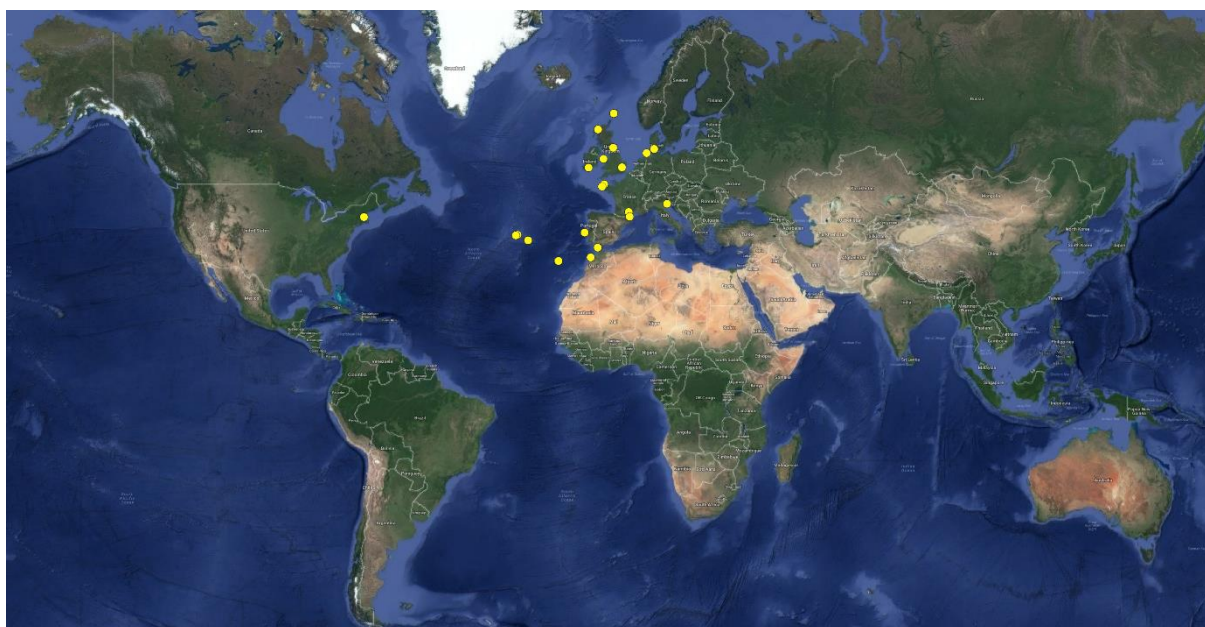
Bootstrap



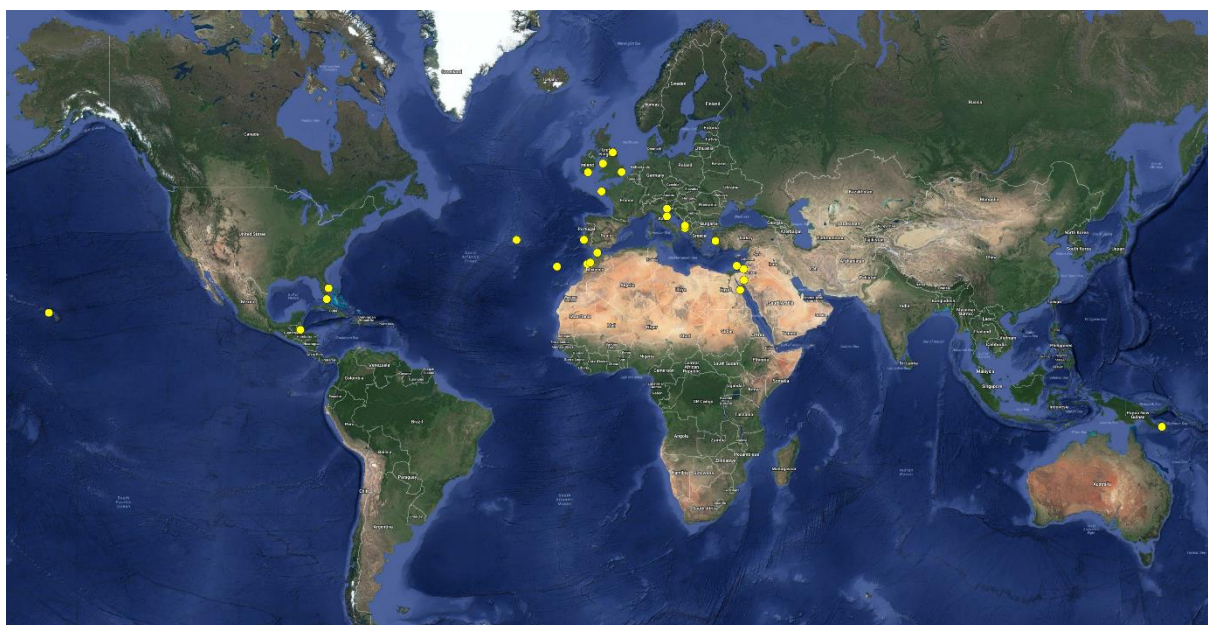
Supplementary Figure S1: 18S Phylogenetic tree featuring v9 barcodes gathered in this study. Oomycete sequences that did not cover the 18S v9 region were excluded from the MAFFT alignment, this notably includes *Olpidiopsis palmariae*, *O. feldmanni* and all members of the Anisopidiales.



Supplementary Figure S2: Biogeography of individual OTUs detected by the MOULINETTE pipeline – SRA-OTU01

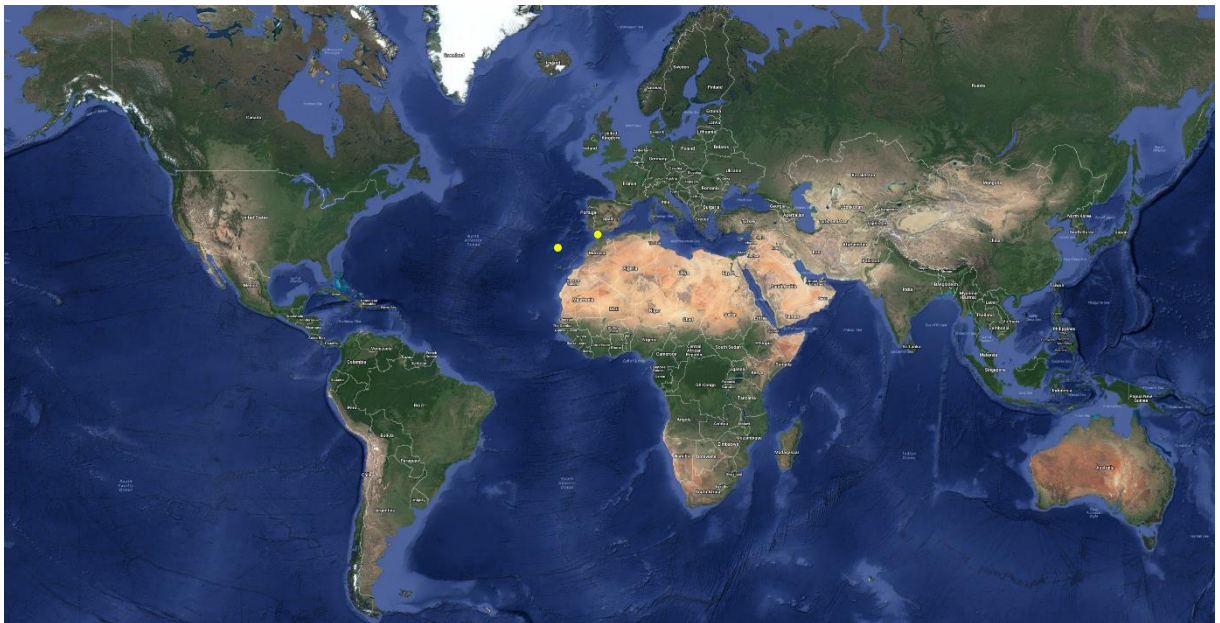


Supplementary Figure S3: Biogeography of individual OTUs detected by the MOULINETTE pipeline – SRA-OTU02

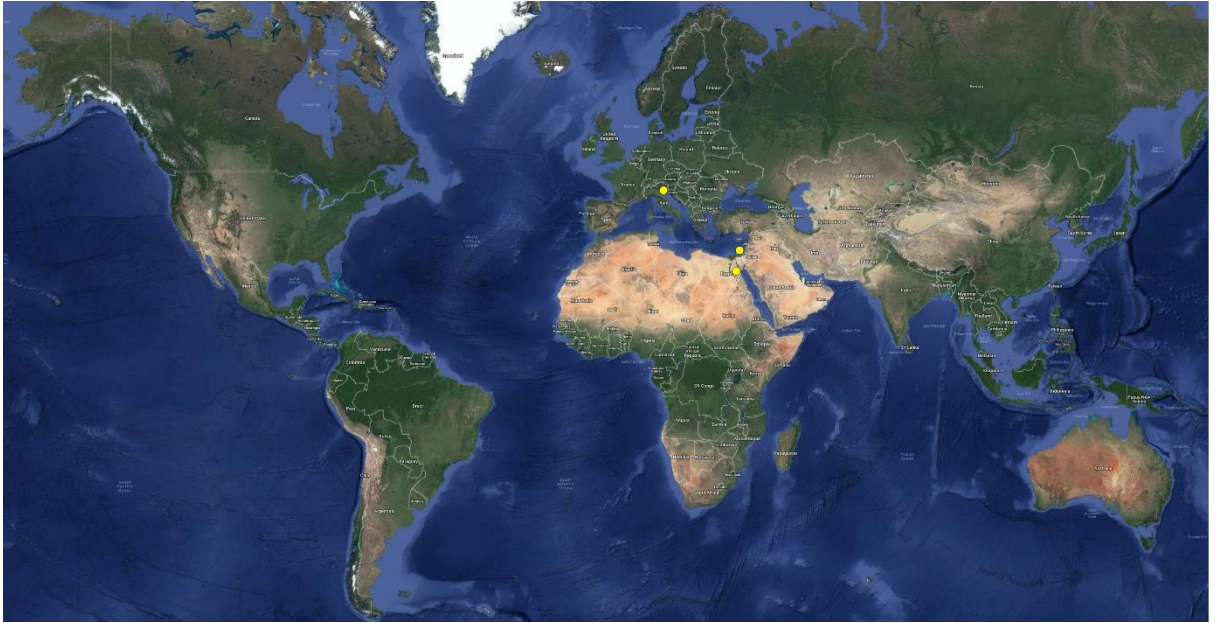




Supplementary Figure S6: Biogeography of individual OTUs detected by the MOULINETTE pipeline – SRA-OTU05



Supplementary Figure S7: Biogeography of individual OTUs detected by the MOULINETTE pipeline – SRA-OTU06



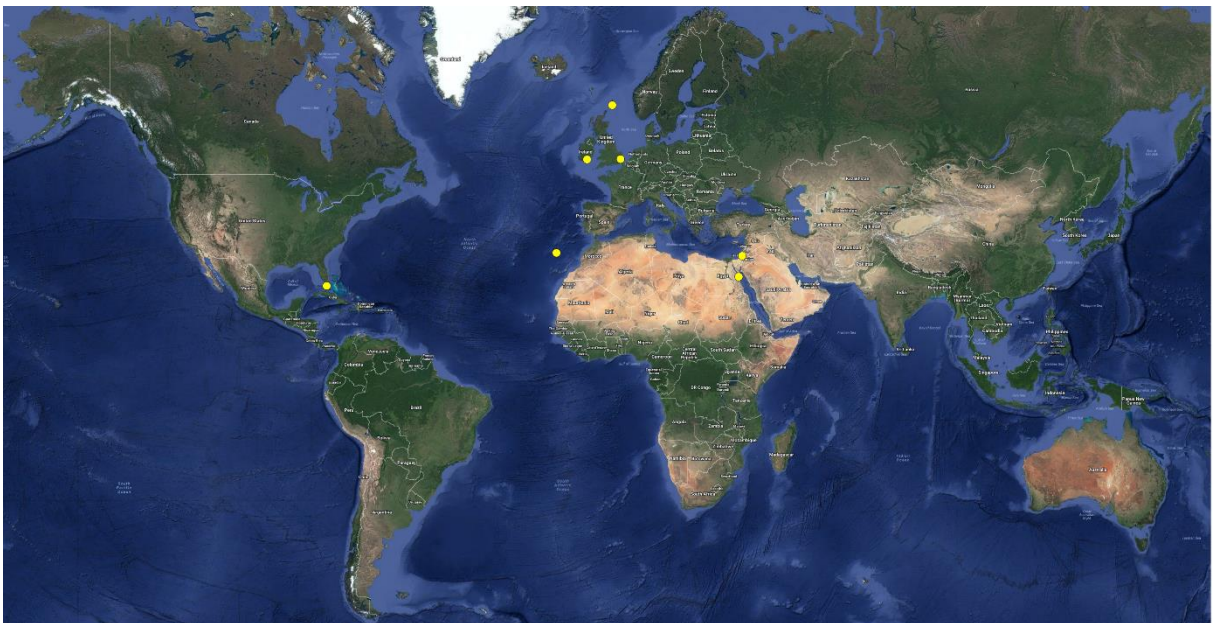
Supplementary Figure S8: Biogeography of individual OTUs detected by the MOULINETTE pipeline – SRA-OTU07



Supplementary Figure S9: Biogeography of individual OTUs detected by the MOULINETTE pipeline – SRA-OTU08



Supplementary Figure S10: Biogeography of individual OTUs detected by the MOULINETTE pipeline – SRA-OTU09



Supplementary Figure S11: Biogeography of individual OTUs detected by the MOULINETTE pipeline – SRA-OTU10



Supplementary Figure S12: Biogeography of individual OTUs detected by the MOULINETTE pipeline
– SRA-OTU11



Supplementary Figure S13: Biogeography of individual OTUs detected by the MOULINETTE pipeline
– SRA-OTU12