

## Expanded Interiors

### 3. ReadMe file for Exhibition at Herculaneum

This document is a contents page and guide for using the *Expanded Interiors* Collection **Exhibition at Herculaneum**. Please read in conjunction with the **Project Overview Metadata**, **Metadata Technical Method** and **Metadata for collection**

This document includes:

Spreadsheet of all *Expanded Interiors* Collections

Content of the **Exhibition at Herculaneum** (highlighted within the spreadsheet)

File labelling guide

Casa del Bel Cortile – Room numbers & direction reference guide

## Expanded Interiors Data Repository - Organisation Flow Chart for the Collections

EXPANDED INTERIORS Roman Objects from Pompeii	EXPANDED INTERIORS House of the Cryptoporticus, Pompeii	EXPANDED INTERIORS Exhibition at Pompeii	EXPANDED INTERIORS Roman Objects from Herculaneum	EXPANDED INTERIORS House of the Beautiful Courtyard Herculaneum	EXPANDED INTERIORS Exhibition at Herculaneum
Project Overview Metadata	Project Overview Metadata	Project Overview Metadata	Project Overview Metadata	Project Overview Metadata	Project Overview Metadata
<a href="#">Links to all other collections of Expanded Interiors</a>	<a href="#">Links to all other collections of Expanded Interiors</a>	<a href="#">Links to all other collections of Expanded Interiors</a>	<a href="#">Links to all other collections of Expanded Interiors</a>	<a href="#">Links to all other collections of Expanded Interiors</a>	<a href="#">Links to all other collections of Expanded Interiors</a>
1. Metadata on Technical Method 2. Website PDFs	1. Metadata on Technical Method 2. Website PDFs	1. Metadata on Technical Method 2. Website PDFs	1. Metadata on Technical Method 2. Website PDFs	1. Metadata on Technical Method 2. Website PDFs	1. Metadata on Technical Method 2. Website PDFs
3. ReadMe file collection: spreadsheet of contents 4. Metadata for collection 5. Metadata for each scanned object/SFM 6. 3D models in .OBJ format (.OBJ.MTL.PNG/JPG) 7. PNG images of 3D models 8. 3D models in .OBJ format (zipped) 9. Photographs documenting scanning process	3. ReadMe file collection: spreadsheet of contents 4. Metadata for collection 5. Metadata for scans and orthophotos 6. Project Point Cloud in .XYZ format (Zipped) 7. Orthographic photos of internal building elevation with .TXT information file 8. Photographic documentation of the scanning of the house 9. Photographic documentation of house	3. ReadMe file collection: spreadsheet of contents 4. Metadata for collection 5. Metadata for scans 6. Text file giving exhibition overview 7. Photographic documentation of Catrin Huber's art exhibition 8. Project point cloud including Catrin Huber's exhibition in XYZ format (zipped) 9. Walkthrough of the exhibition in .MP4 format 10. Timelapse .mov	3. ReadMe file collection: spreadsheet of contents 4. Metadata for collection 5. Metadata for scanned each object and SFM 6. 3D models in OBJ format (.OBJ.MTL.PNG/JPG) 7. PNG images of 3D models 8. 3D models in OBJ format (zipped) 9. SFM photographs (zipped) 10. Photographs documenting scanning process	3. ReadMe file collection:spreadsheet of contents 4. Metadata for collection 5. Metadata for scans and orthographic photos 6. Project Point Cloud in .XYZ format (Zipped) 7. Orthographic images from laser scanning with .TXT information file 8. Photographic documentation of the house 9. Photographic documentation of the scanning of the house	3. ReadMe file collection:spreadsheet of contents 4. Metadata for collection 5. Metadata for scans 6. Text file giving exhibition overview 7. Photographic documentation of Catrin Huber's art exhibition 8. Scan of the House of the Beautiful Courtyard including Catrin Huber's exhibition in XYZ format. 9. Catrin Huber's exhibition walk through in MP4 format 10. Timelapse .mov

File labelling guide:

Dataset 7.: Files are named according to **type/site/room/orientation/credit/number**.

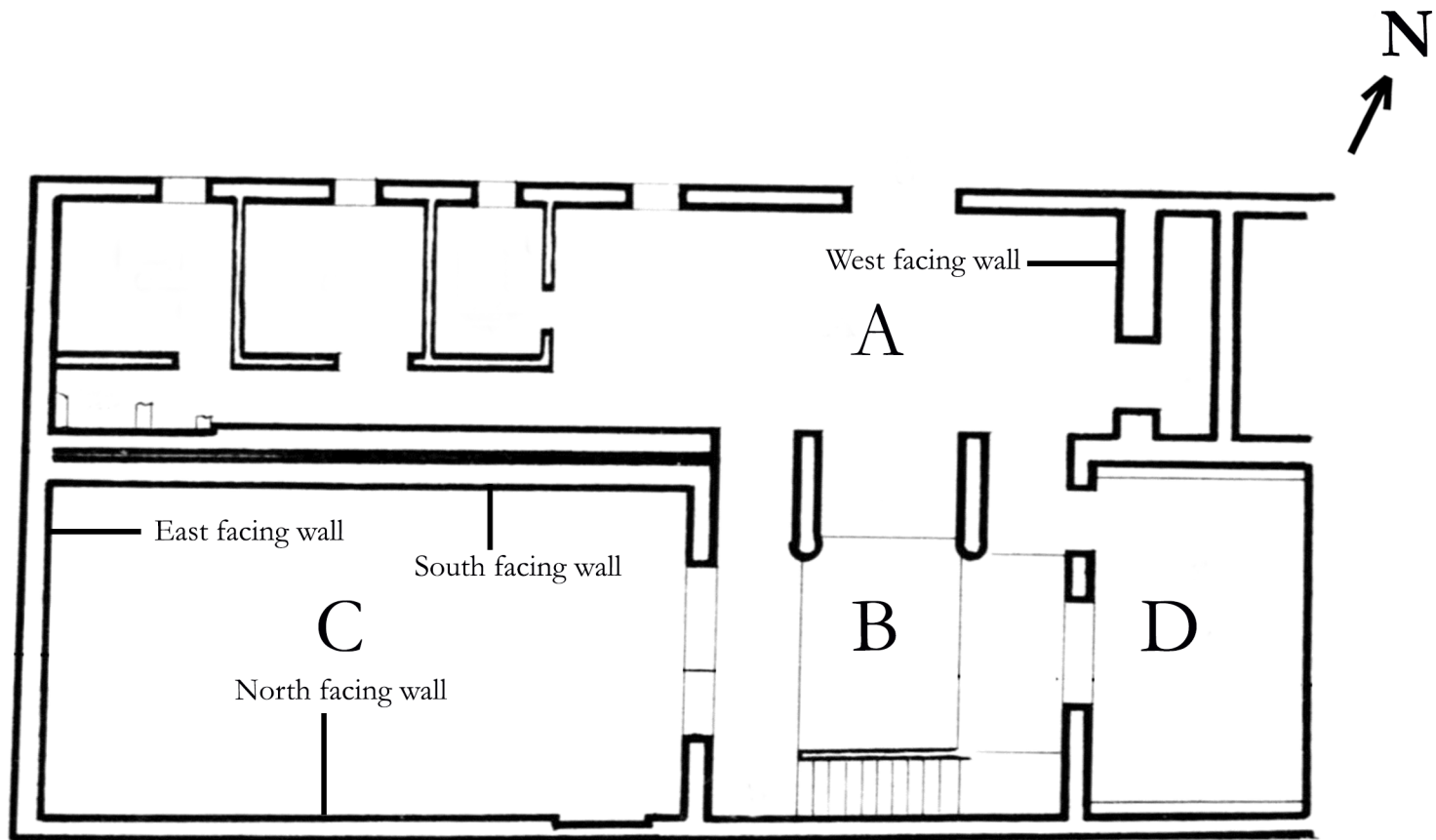
Example: IMG\_Installation\_CC\_rD\_south\_photo Amedeo Benestante\_001

**Installation =** Expanded Interiors installation  
**CdBC =** Casa del Bel Cortile (House of the Beautiful Courtyard)  
**rD =** room D please see the map of House of the Beautiful Courtyard below for room numbers & direction reference guide  
**south =** please see the map of House of the Beautiful Courtyard below for room numbers & direction reference guide  
please note: the direction of each image view corresponds to the direction the wall is facing.  
**Photo =** Amedeo Benestante

Dataset 8: EI2018.zip = Expanded Interiors, 2018

Dataset 9: EI\_2018 = Expanded Interiors, 2018

Casa del Bel Cortile – Room numbers & direction reference guide for naming of the images



Source: Maiuri, A., 1958. Ercolano: i nuovi scavi (1927-1958) (Vol.1). Istituto poligrafico dello Stato, Libreria dello Stato: fig. 316 p. 384 (with modifications).