

Expanded Interiors

3. ReadMe file for House of the Beautiful Courtyard, Herculaneum

This document is a contents page and guide for using the *Expanded Interiors* Collection **House of the Beautiful Courtyard, Herculaneum**.

Please read in conjunction with the **Project Overview Metadata**, **Metadata Technical Method** and **Metadata for collection**

This document includes:

Spreadsheet of all *Expanded Interiors* Collections

Content of the **House of the Beautiful Courtyard, Herculaneum** (highlighted within the spreadsheet)

File labelling guide

Casa del Bel Cortile / House of the Beautiful Courtyard – Room numbers & direction reference guide for the images

Expanded Interiors Data Repository - Organisation Flow Chart for the Collections

| EXPANDED INTERIORS Roman Objects from Pompeii | EXPANDED INTERIORS House of the Cryptoporticus, Pompeii | EXPANDED INTERIORS Exhibition at Pompeii | EXPANDED INTERIORS Roman Objects from Herculaneum | EXPANDED INTERIORS House of the Beautiful Courtyard Herculaneum | EXPANDED INTERIORS Exhibition at Herculaneum |
|--|---|--|--|--|---|
| Project Overview Metadata | Project Overview Metadata | Project Overview Metadata | Project Overview Metadata | Project Overview Metadata | Project Overview Metadata |
| Links to all other collections of Expanded Interiors | Links to all other collections of Expanded Interiors | Links to all other collections of Expanded Interiors | Links to all other collections of Expanded Interiors | Links to all other collections of Expanded Interiors | Links to all other collections of Expanded Interiors |
| 1. Metadata on Technical Method | 1. Metadata on Technical Method | 1. Metadata on Technical Method | 1. Metadata on Technical Method | 1. Metadata on Technical Method | 1. Metadata on Technical Method |
| 2. Website PDFs | 2. Website PDFs | 2. Website PDFs | 2. Website PDFs | 2. Website PDFs | 2. Website PDFs |
| 3. ReadMe file collection: spreadsheet of contents | 3. ReadMe file collection: spreadsheet of contents | 3. ReadMe file collection: spreadsheet of contents | 3. ReadMe file collection: spreadsheet of contents | 3. ReadMe file collection:spreadsheet of contents | 3. ReadMe file collection:spreadsheet of contents |
| 4. Metadata for collection | 4. Metadata for collection | 4. Metadata for collection | 4. Metadata for collection | 4. Metadata for collection | 4. Metadata for collection |
| 5. Metadata for each scanned object/SFM | 5. Metadata for scans and orthophotos | 5. Metadata for scans | 5. Metadata for scanned each object and SFM | 5. Metadata for scans and orthographic photos | 5. Metadata for scans |
| 6. 3D models in .OBJ format (.OBJ.MTL.PNG/JPG) | 6. Project Point Cloud in .XYZ format (Zipped) | 6. Text file giving exhibition overview | 6. 3D models in OBJ format (.OBJ.MTL.PNG/JPG) | 6. Project Point Cloud in .XYZ format (Zipped) | 6. Text file giving exhibition overview |
| 7. PNG images of 3D models | 7. Orthographic photos of internal building elevation with .TXT information file | 7. Photographic documentation of Catrin Huber's art exhibition | 7. PNG images of 3D models | 7. Orthographic images from laser scanning with .TXT information file | 7. Photographic documentation of Catrin Huber's art exhibition |
| 8. 3D models in .OBJ format (zipped) | 8. Photographic documentation of the scanning of the house | 8. Project point cloud including Catrin Huber's exhibition in XYZ format (zipped) | 8. 3D models in OBJ format (zipped) | 8. Photographic documentation of the house | 8. Scan of the House of the Beautiful Courtyard including Catrin Huber's exhibition in XYZ format. |
| 9. Photographs documenting scanning process | 9. Photographic documentation of house | 9. Walkthrough of the exhibition in .MP4 format | 9. SFM photographs (zipped) | 9. Photographic documentation of the scanning of the house | 9. Catrin Huber's exhibition walk through in MP4 format |
| | | 10. Timelapse .mov | 10. Photographs documenting scanning process | | 10. Timelapse .mov |

File labelling guide:

Dataset 7.: Files are named according to **site/orientation/type**. Example: Casa_Del_Bel_Cortile_north_east_elevation

Dataset 8.: Files are named according to **site/room/orientation/credit/number**. Example: IMG_CdBC_rA_west_001

CdBC = Casa del Bel Cortile (House of the Beautiful Courtyard)

rA = room A please see the map of Casa del Bel Cortile below for room numbers & direction reference guide

west = please see the map of Casa del Bel Cortile below for direction reference guide

please note: the direction of each image view corresponds to the direction the wall is facing.

Dataset 9: Files are named according to **activity/site/room/orientation/credit/number**.

Example: IMG_3D Scanning_CdBC_rC_from above_ photo EI_003

EI = Expanded Interiors

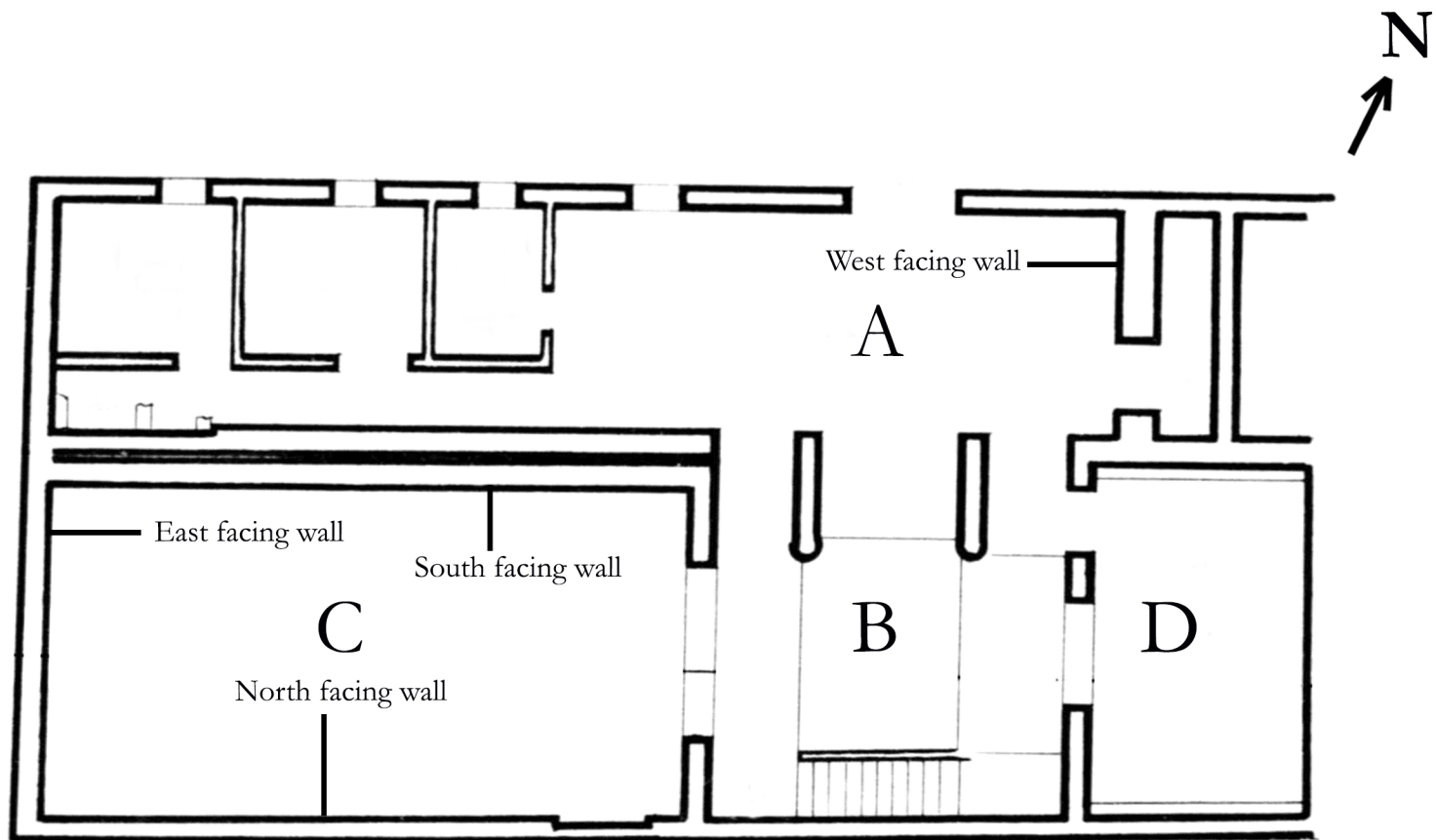
CdBC = Casa del Bel Cortile (House of the Beautiful Courtyard)

rC = room C please see the map of Casa del Bel Cortile below for room numbers & direction reference guide

from above = please see the map of Casa del Bel Cortile below for direction reference guide

please note: the direction of each image view corresponds to the direction the wall is facing.

Casa del Bel Cortile – Room numbers & direction reference guide for images



Source: Maiuri, A., 1958. Ercolano: i nuovi scavi (1927-1958) (Vol.1). Istituto poligrafico dello Stato, Libreria dello Stato: fig. 316 p. 384 (with modifications).