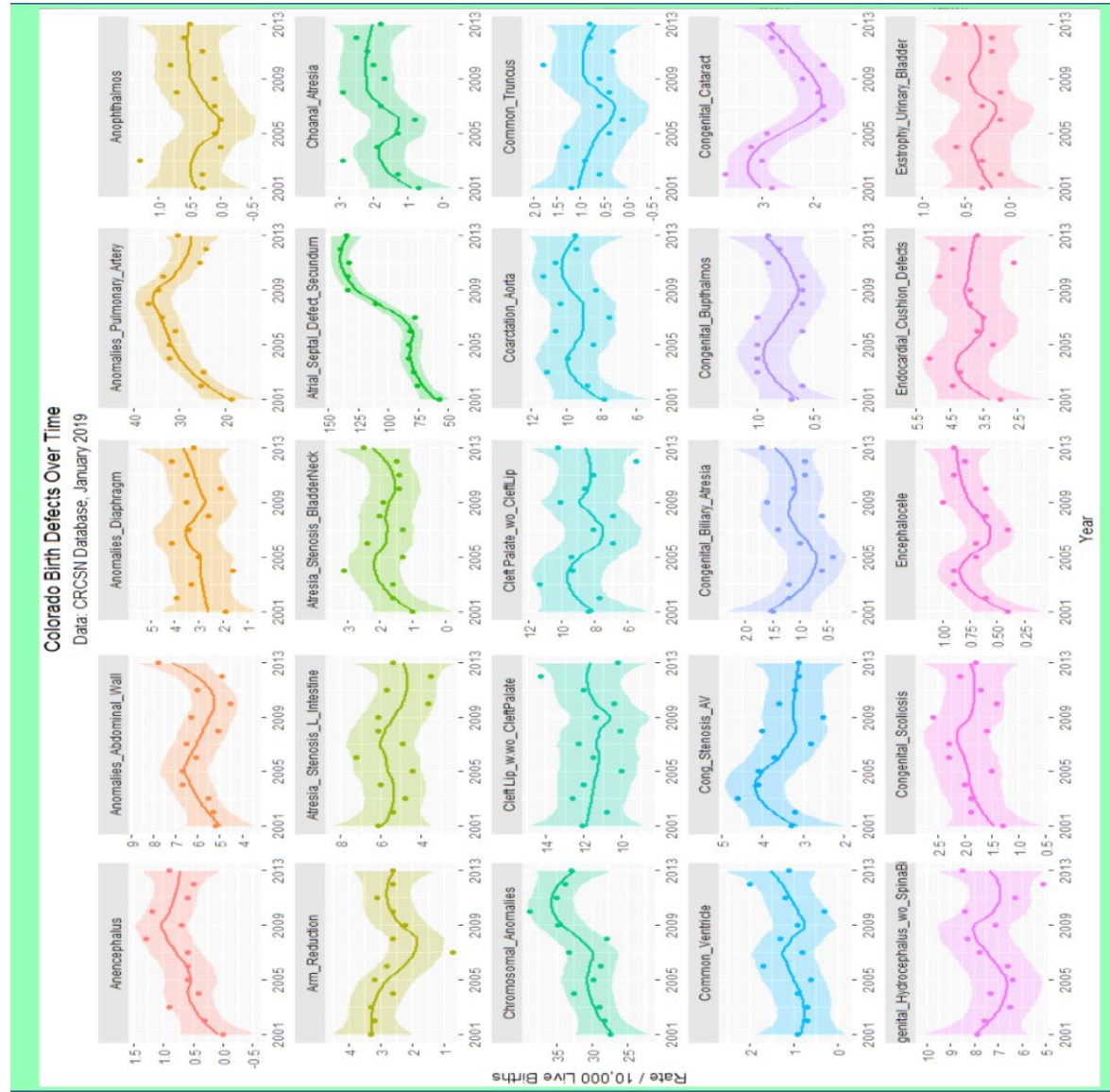
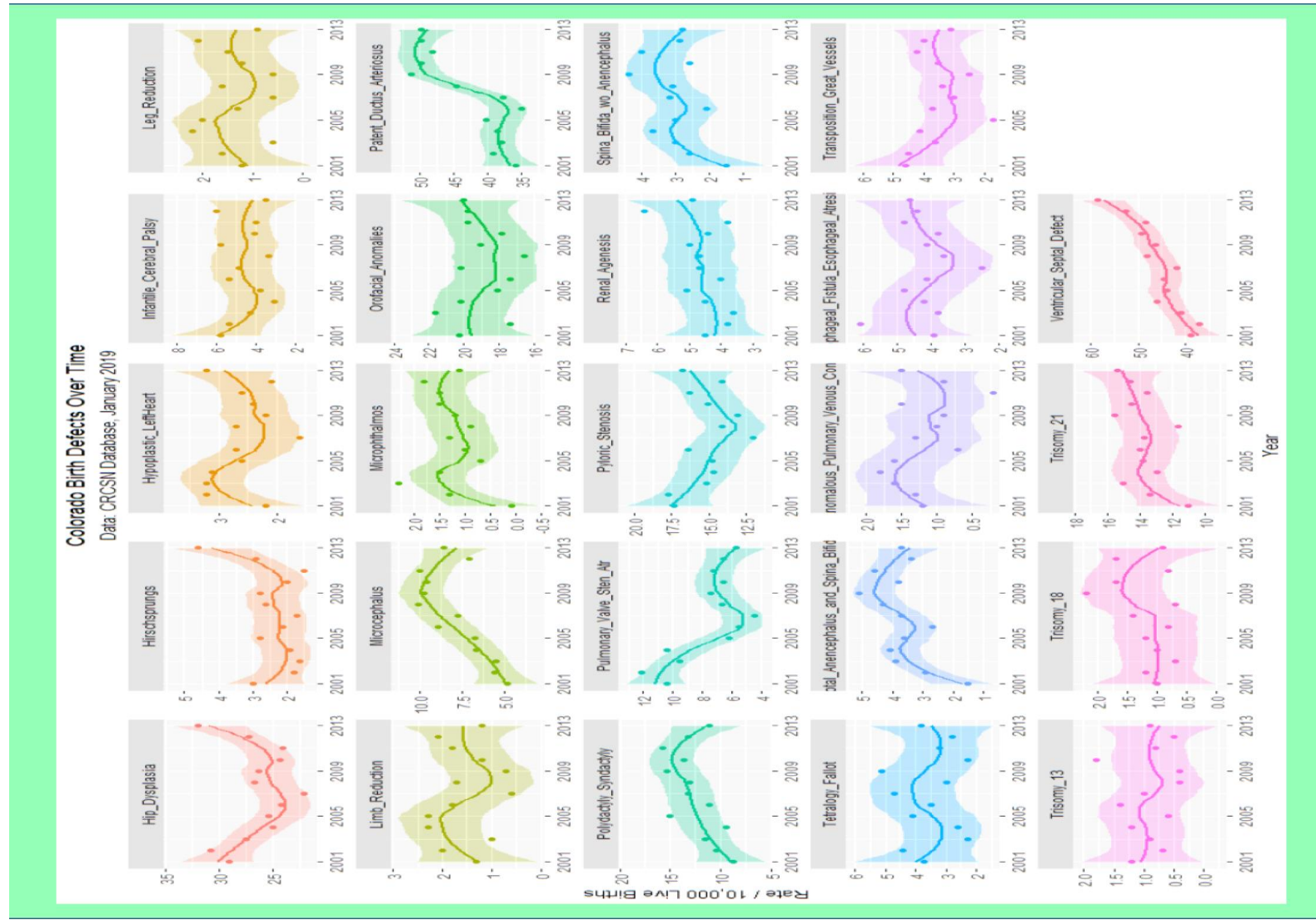


Supplementary Table 1.: Rise in Various Defects and Major Defect Classes

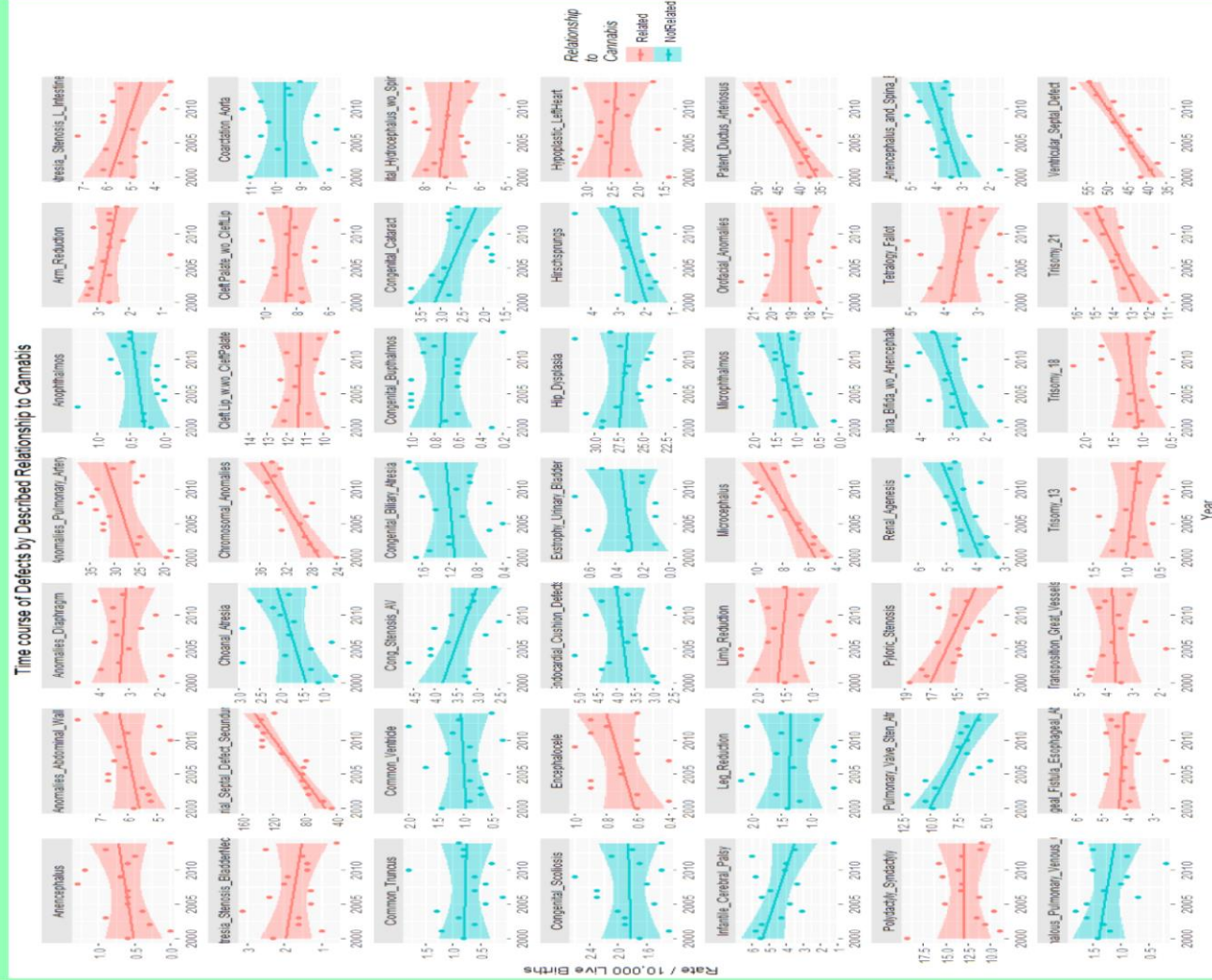
Parameter					Model			
Parameter	Estimate	Std.Error	t value	Pr(> t)	Adj. R Squ	F	df	P
<i>Linear Models</i>								
NTD	0.0975	0.0541	1.802	0.0947	0.1383	3.248	1,13	0.0947
Microcephaly	0.3046	0.0812	3.752	0.0024	0.4830	14.080	1,13	0.0024
Spina Bifida	0.0693	0.0405	1.709	0.1110	0.1207	2.922	1,13	0.1111
Atrial Septal Defect Secundum	6.4520	0.7943	8.123	1.9E-06	0.8227	65.980	1,13	1.9E-06
Patent Ductus Arteriosus	0.9925	0.2382	4.166	0.0011	0.5388	17.360	1,13	0.0011
Ventricular Septal Defect	1.1825	0.1623	7.287	6.1E-06	0.7882	53.090	1,13	6.1E-06
Chromosomal Anomalies	0.6543	0.1545	4.236	0.0010	0.5475	17.940	1,13	0.0010
Trisomy 21	0.1850	0.0673	2.748	0.0166	0.3188	7.552	1,13	0.0166
Major CNS	1.0807	0.1514	7.137	7.6E-06	0.781	50.940	1,13	7.6E-06
Major Cardiovascular	6.0660	0.8369	7.248	6.5E-06	0.7863	52.530	1,13	6.5E-06
Major Genitourinary	6.1110	0.6297	9.705	2.5E-07	0.8694	94.190	1,13	2.5E-07
Major Musculoskeletal	3.6329	0.5912	6.145	3.5E-05	0.7242	37.760	1,13	3.5E-05
Respiratory	1.9304	0.2758	6.999	9.4E-06	0.7741	48.990	1,13	9.4E-06
Chromosomal	0.6543	0.1545	4.236	0.0009	0.5475	17.940	1,13	0.0009
Majors N 2014	92.9200	11.5600	8.039	2.1E-06	0.8197	64.630	1,13	2.1E-06
Majors N 2013	228.4800	17.7900	12.84	2.3E-08	0.9265	164.900	1,12	2.3E-08
Majors Rate pc 2014	0.1570	0.0221	7.094	8.1E-06	0.7789	50.330	1,13	8.1E-06
Majors Rate pc 2013	0.3677	0.0288	12.77	2.4E-08	0.9257	163.000	1,12	2.4E-08



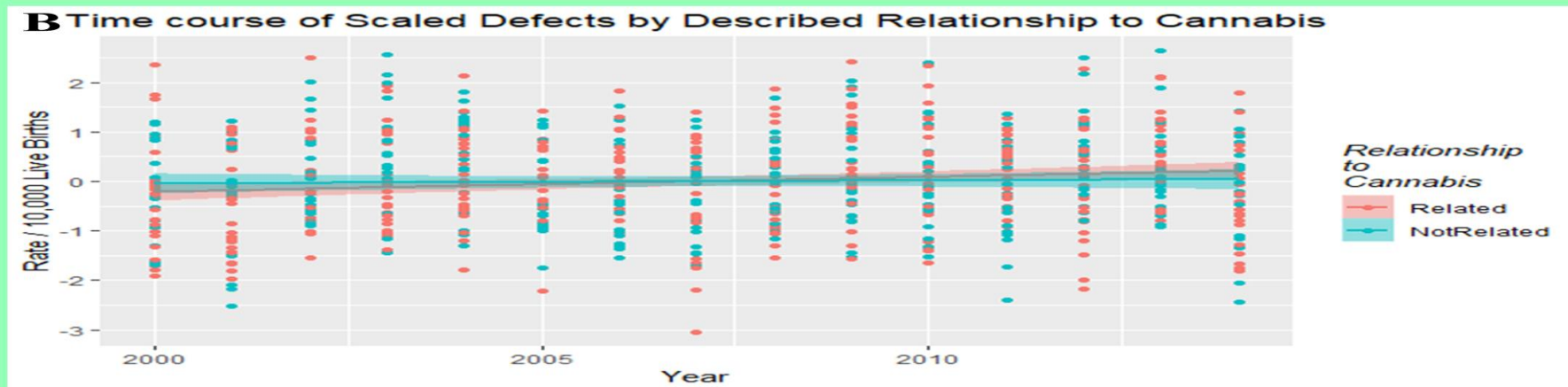
Supplementary Figure 1.: Colorado Congenital Defects A-E, loess curves fitted.



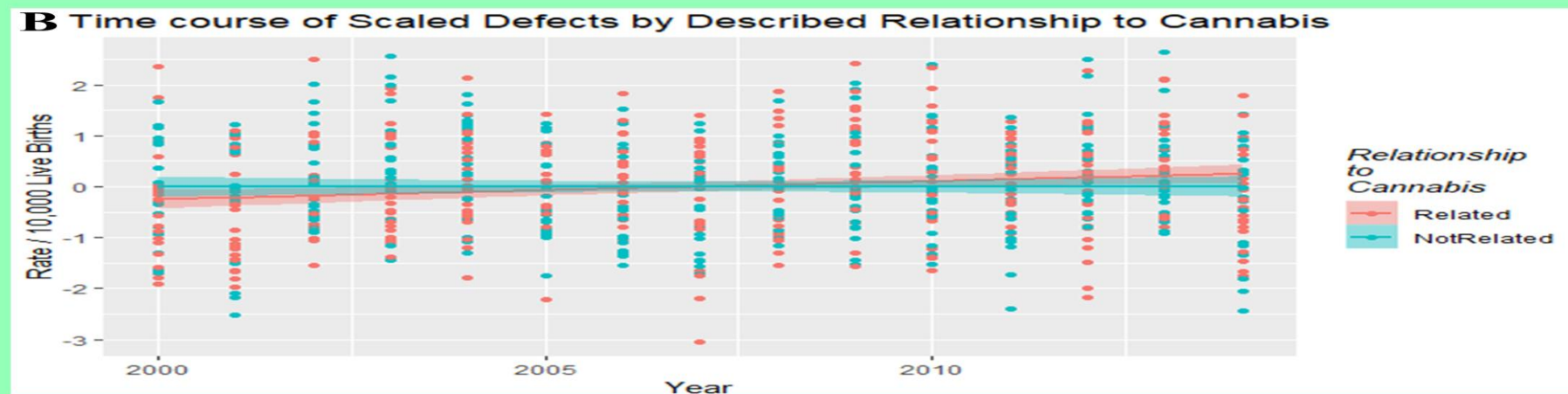
Supplementary Figure 2.: Colorado Congenital Defects H-V, loess curves fitted.



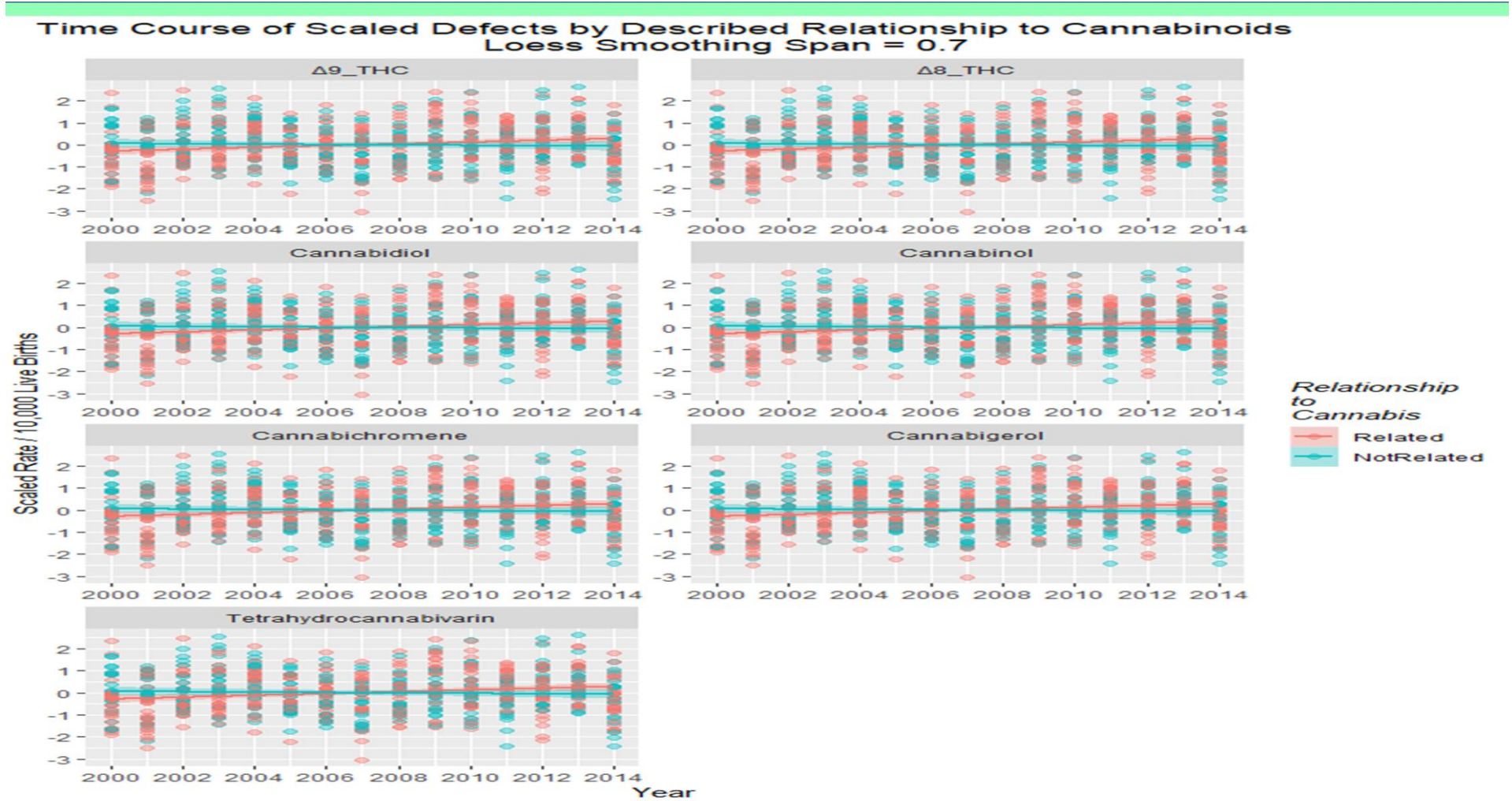
Supplementary Figure 3.: Colorado Congenital Defects, faceted plot by defect by described relationship to cannabis use.



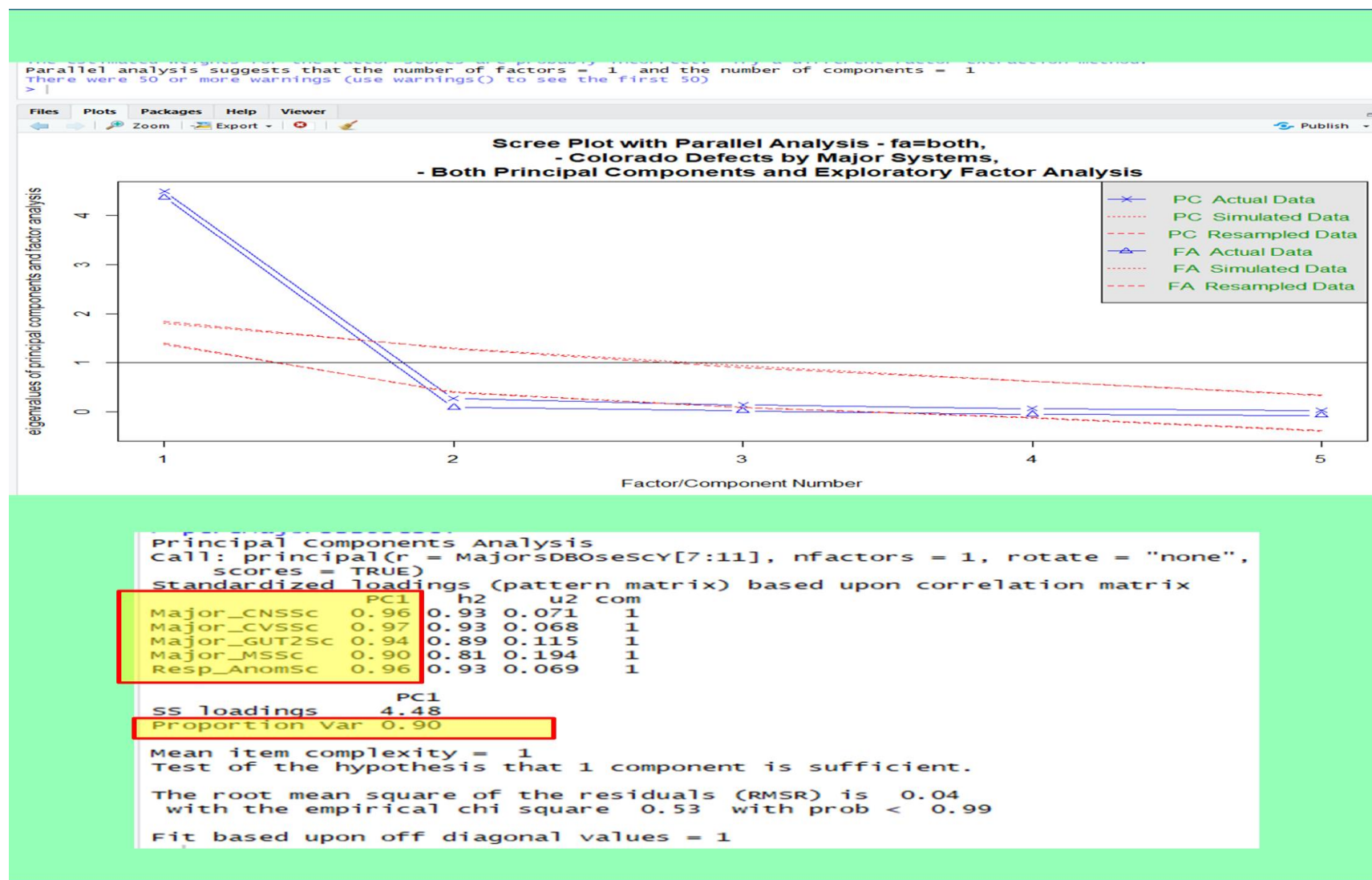
Supplementary Figure 4.: Scaled Defects rate as a function of drug use exposure with Regression lines fitted in faceted plot by relationship to cannabis use, raw classification.



Supplementary Figure 6.: Scaled Defects rate as a function of drug use exposure with Regression lines fitted in facetted plot by relationship to cannabis use, after exclusion of pyloric stenosis.



Supplementary Figure 7.: Scaled Defects rate as a function of drug use exposure with (A) loess curves and (B) Regression lines by relationship to cannabis use, raw classification, after exclusion of pyloric stenosis, from Supplementary Figure 4.



Supplementary Figure 8.: Scree plot for Principal Component 1 for congenital anomalies after combining CNS, CVS, respiratory, genitourinary and musculoskeletal major anomaly classes.

