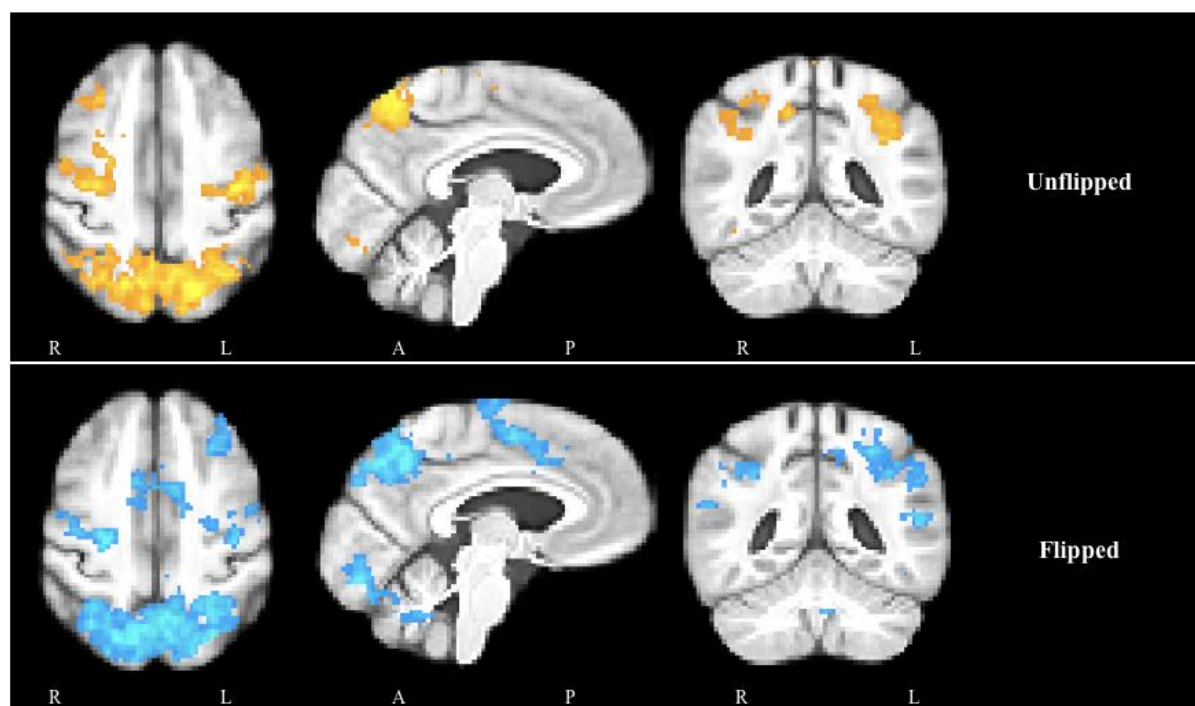
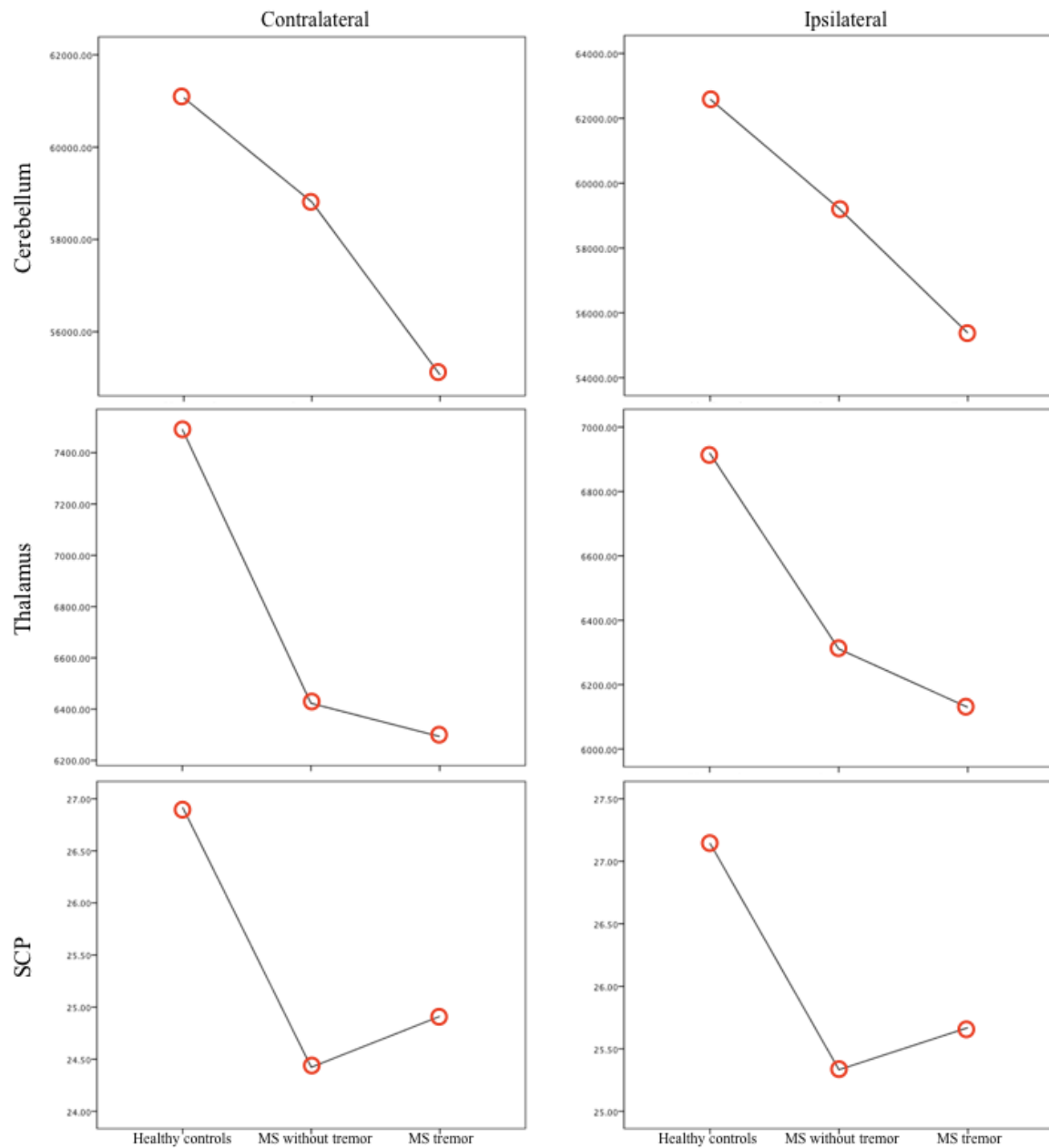


Supplementary Figure 1. **Y-flipping of the functional images.** Top row shows the activation for 10 participants who played the game with their right hand. Bottom row shows the activation for 10 participants who played the game with their left hand and subsequently had the images y-flipped.



Supplementary Figure 2. **Lesion segmentation tool on a double inversion recovery image.**

The extend of lesion segmentation using the lesion prediction algorithm within the lesion segmentation tool software.



Supplementary Figure 3. **Atrophy measures in all three groups.** The mean volumetric measures for the cerebellum (top), thalamus (middle) and superior cerebellar peduncle (bottom) in healthy controls, multiple sclerosis participants without tremor and multiple sclerosis participants with tremor. Abbreviations: SCP, superior cerebellar peduncle.