

SUPPLEMENTAL DATA

Supplementary Table S1. The 8th Editions of the AJCC Staging Definitions

8th AJCC Staging System	
T0	No evidence of primary tumor
Tis	Carcinoma in situ: intraepithelial tumor without invasion of the lamina propria, high-grade dysplasia
T1a	Tumor invades the lamina propria or muscularis mucosae
T1b	Tumor invades the submucosa
T2	Tumor invades the muscularis propria
T3	Tumor penetrates the subserosal connective tissue without invasion of the visceral peritoneum or adjacent structures
T4a	Tumor invades the seroma (visceral peritoneum)
T4b	Tumor invades adjacent structure/organs
N0	No regional lymph node metastasis
N1	Metastasis in one or two regional lymph nodes
N2	Metastasis in three to six regional lymph nodes
N3a	Metastasis in seven to 15 regional lymph nodes
N3b	Metastasis in 16 or more regional lymph nodes
M0	No distant Metastasis
M1	Distant metastasis

Supplementary Table S2. The 8th, and modified AJCC staging system

8th	N0	N1	N2	N3a	N3b
T1	IA	IB	IIA	IIB	IIIB
T2	IB	IIA	IIB	IIIA	IIIB
T3	IIA	IIB	IIIA	IIIB	IIIC
T4a	IIB	IIIA	IIIA	IIIB	IIIC
T4b	IIIA	IIIB	IIIB	IIIC	IIIC
M1	IV	IV	IV	IV	IV

Modified	N0	N1	N2	N3a	N3b
T1	IA	IB	IIA	IIB	IIIB
T2	IB	IIA	IIB	IIIA	IIIB
T3	IIA	IIB	IIIA	IIIB	IIIC
T4a	IIB	IIIB	IIIB	IIIC	IIIC
T4b	IIB	IIIC	IIIC	IIIC	IIIC
M1	IV	IV	IV	IV	IV

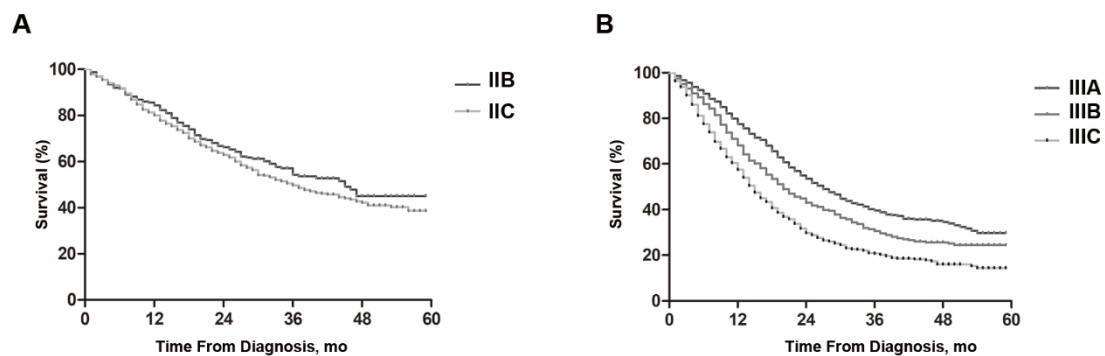
Supplementary Table S3. Median OS of the patients with stage II and III using the modified 8th staging system

Modified 8th	Median OS, mo	SD	log-rank
IIB	45.000	4.087	0.184
IIC	35.000	2.683	
IIIA	26.000	1.398	<0.001
IIIB	19.000	0.842	
IIIC	14.000	0.543	

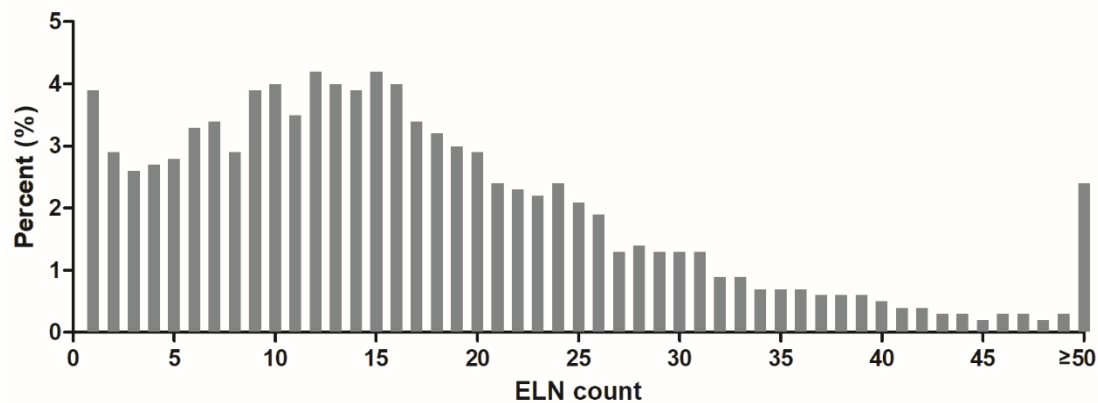
Supplementary Table S4. Comparison of the prognostic impacts of the 2 staging systems (n = 8359)

Stage	8th AJCC		Modified 8th	
	HR	<i>P</i>	HR	<i>P</i>
I	1		1	
II	2.198(1.964-2.460)	< 0.001	2.234 (1.998-2.499)	< 0.001
III	5.042 (4.541-5.599)	< 0.001	5.100(4.592-5.665)	< 0.001
IV	8.385 (7.424-9.470)	< 0.001	8.385 (7.425-9.471)	< 0.001

Values in parentheses are 95% confidence intervals.



Supplementary Figure S1. Kaplan-Meier survival curves for the patients within stage IIB using the modified 8th staging system (A). Kaplan-Meier survival curves for the patients within stage IIIA, IIIB and IIIC using the modified 8th staging system (B).



Supplementary Figure S2. Examined lymph node (ELN) counts in the SEER cohort.