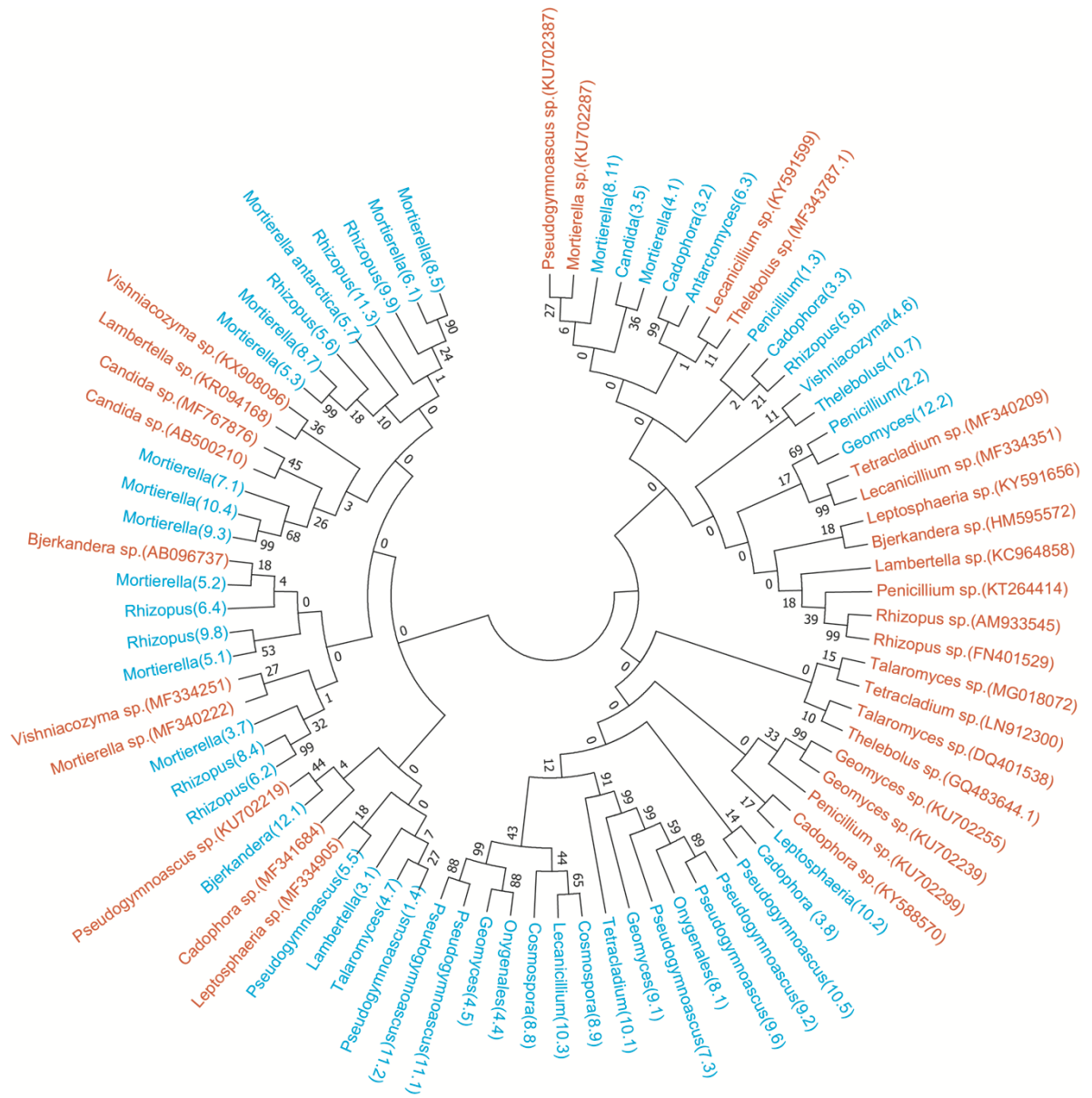


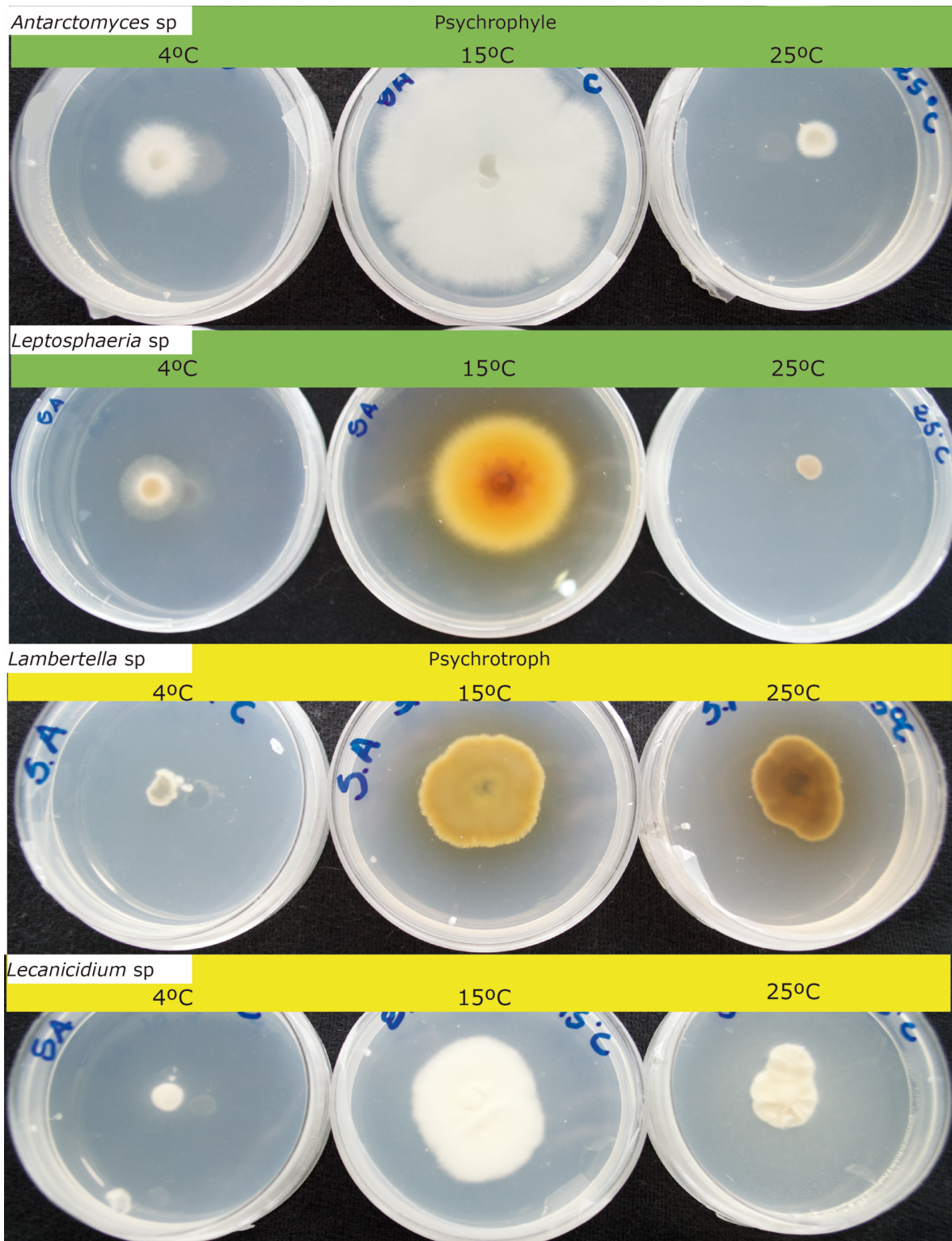
Supplementary Figures

Supplementary Figure 1. Phylogenetic tree showing the affiliation of cultivable fungi isolated in this study from the South Shetland Islands (blue letter). The neighbor-joining tree was constructed with representative 18S rRNA gene sequences of the same genera isolated from tropical areas (red letter). A bootstrap analysis was performed with 1,000 runs. The accession numbers are in parentheses.

Supplementary Figure 2. Psychrophile (green line) and psychrotroph (yellow line) fungal growth at 4°C, 15°C and 25°C.



Supp. Fig. 1



Supp. Fig. 2