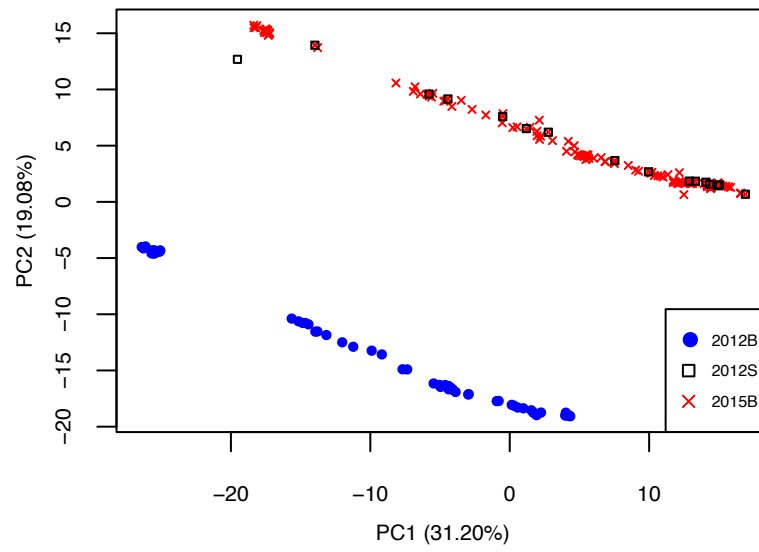


A PCA of SolCAP meta-data with bi-allelic polymorphic SNPs (2,934 SNPs)



B PCA of SolCAP meta-data with consistent SNP calling (2,307 SNPs)

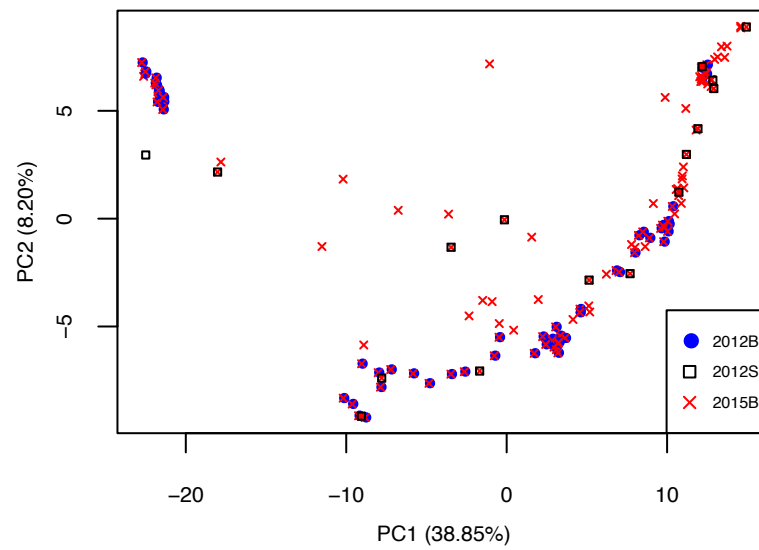


Figure S9. The PCA of SolCAP meta-analysis. A)The PCA plot of bi-allelic SNPs. B) The PCA plot after removing those SNPs of reverse-complement allele designation.