

# **Supporting Information**

## **Epithelial cell Functionality on electroconductive Fe/Sr co-doped biphasic calcium phosphate**

**Subhadip Basu<sup>a</sup>, Aritri Ghosh<sup>b</sup>, Ananya Barui<sup>b,\*</sup>,**

**Bikramjit Basu<sup>a,c,\*</sup>**

### **Author Address**

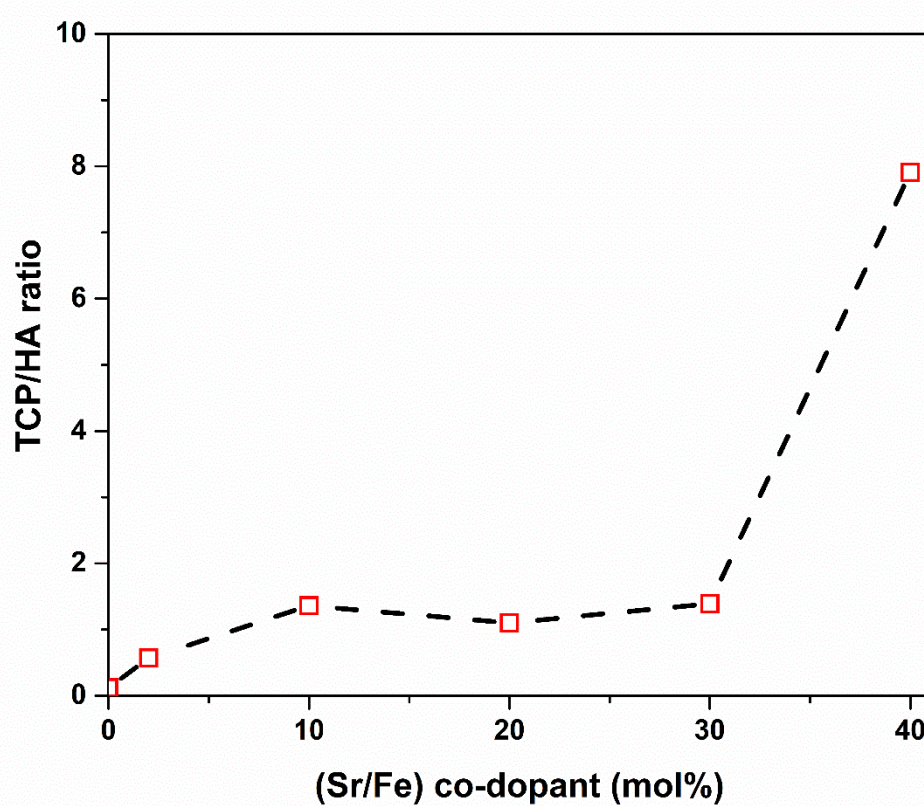
<sup>a</sup>Laboratory for Biomaterials, Materials Research Center, Indian Institute of Science, Bangalore-560012, India

<sup>b</sup>Centre for Healthcare Science and Technology, Indian Institute of Engineering Science and Technology, Shibpur, Howrah-711103, West Bengal, India

<sup>c</sup>Center for Biosystems Science and Engineering, Indian Institute of Science, Bangalore-560012, India

**\*Joint corresponding authors**

**E-mail addresses:** bikram@iisc.ac.in (B. Basu), [ananya.pariksha@gmail.com](mailto:ananya.pariksha@gmail.com) (A. Barui)



**Fig. S1: Phase assemblage changes with dopant content.** Change of TCP/HA ratio with dopant content for a number of co-doped BCPs. [adopted from Basu et al. ACS Biomater Sci Eng; 2018; 4:857-71]