

Thailand

Cambodia

Vietnam

Gridded birth and pregnancy datasets for Africa, Latin America and the Caribbean

Dr. Natalia Tejedor Garavito

world
pop



Data Descriptor | [OPEN](#) | Published: 22 May 2018

Gridded birth and pregnancy datasets for Africa, Latin America and the Caribbean

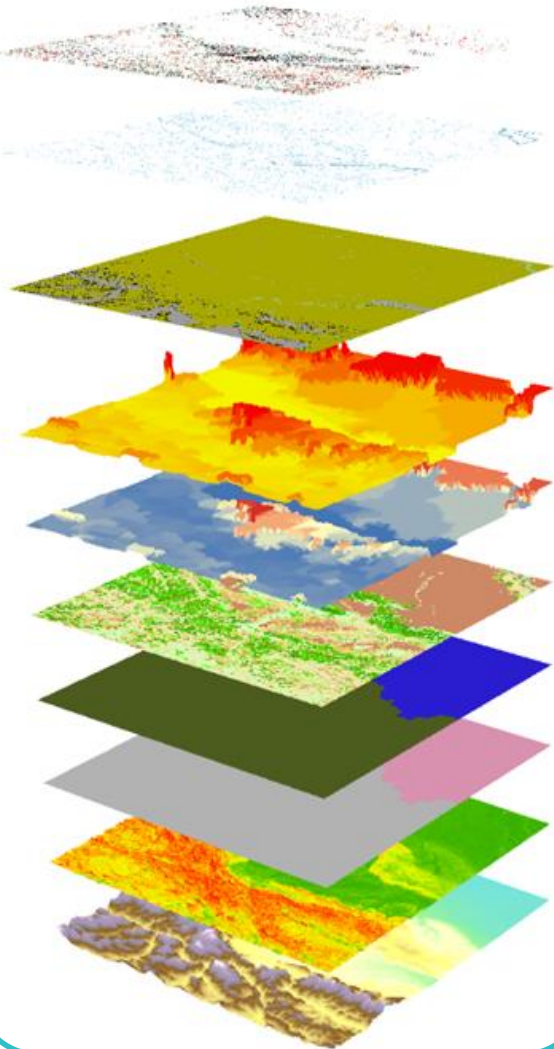
W.H.M. James, N. Tejedor-Garavito , S.E. Hanspal, A. Campbell-Sutton, G.M. Hornby, C. Pezzulo, K. Nilsen, A. Sorichetta, C.W. Ruktanonchai, A. Carioli, D. Kerr, Z. Matthews & A.J. Tatem

Scientific Data **5**, Article number: 180090 (2018) | [Download Citation](#) 

Abstract

Understanding the fine scale spatial distribution of births and pregnancies is crucial for informing planning decisions related to public health. This is especially important in lower income countries where

Geospatial data analysis



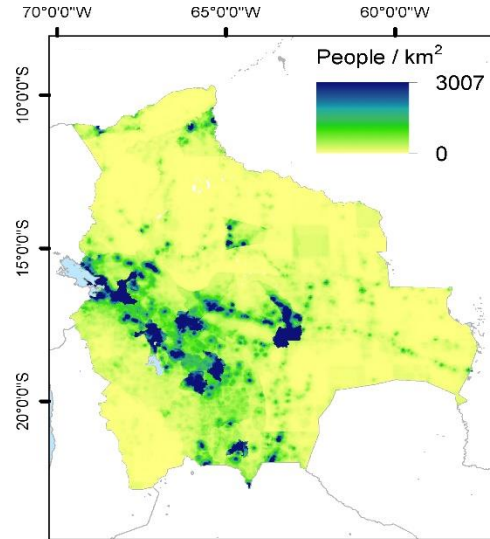
Pregnancies

Births

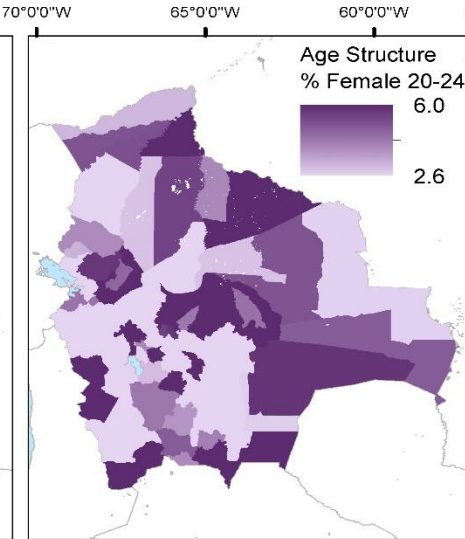
Women of
Childbearing Age



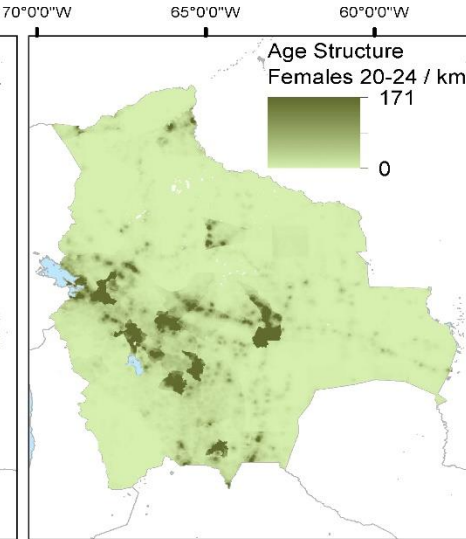
Population



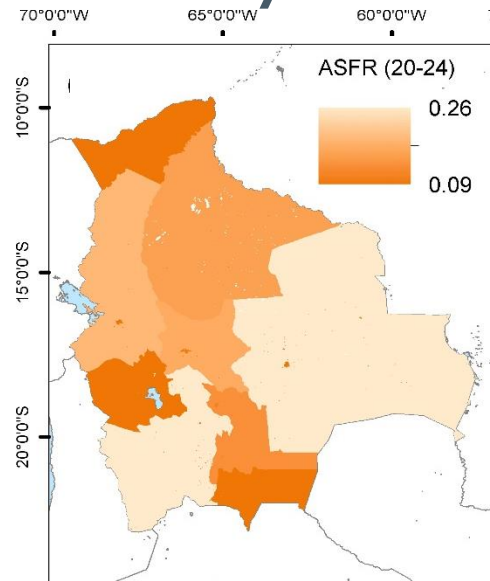
Age Structure



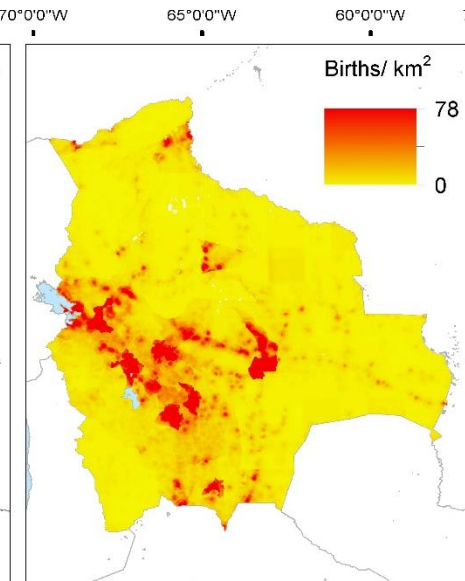
WoCBA



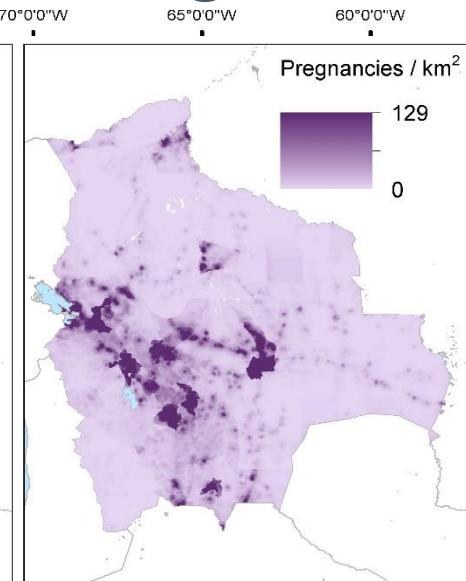
Fertility Data

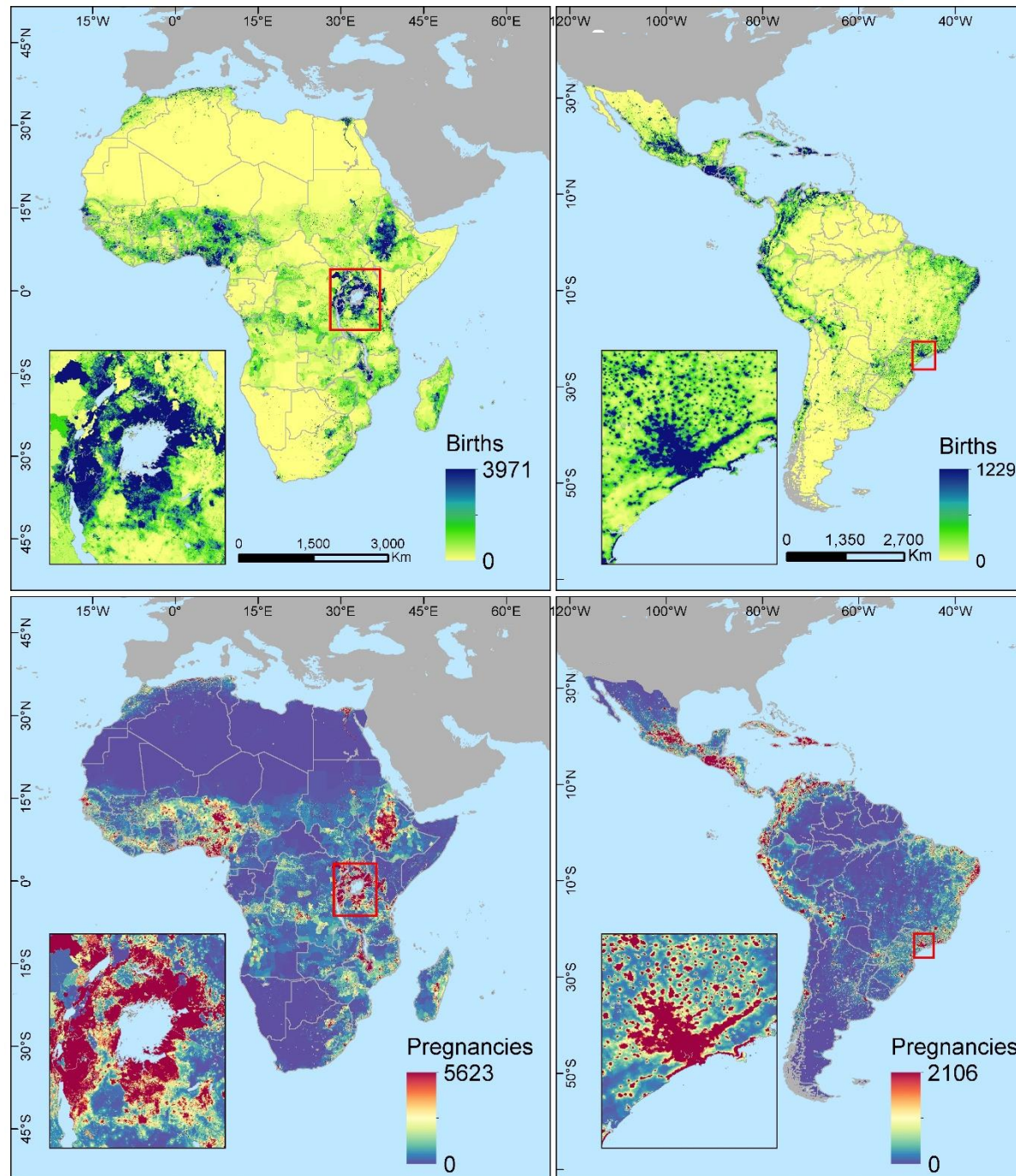


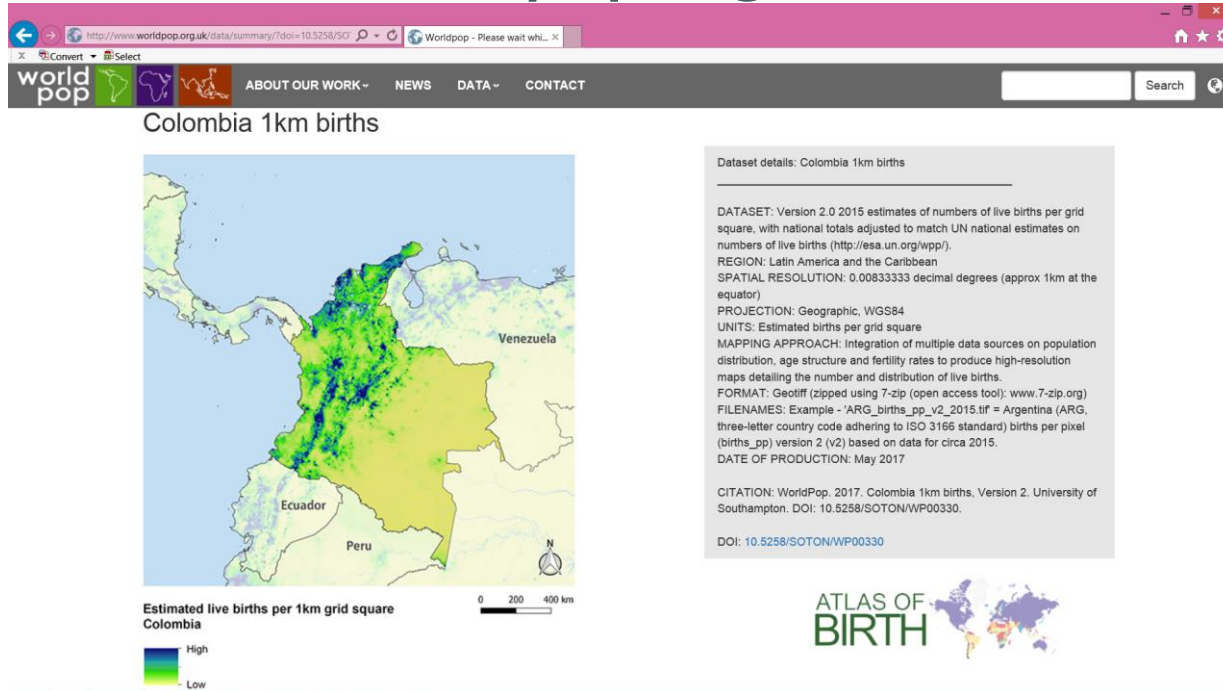
Births



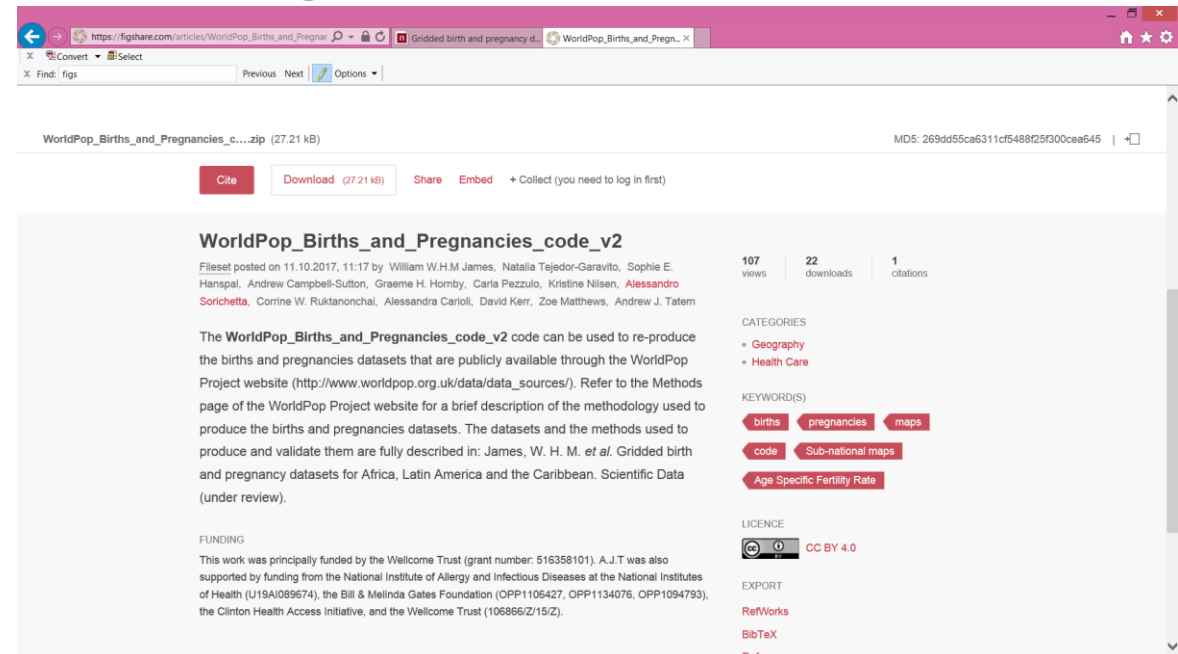
Pregnancies







Code: figshare.com



License

Attribution 4.0 International (CC BY 4.0)

This is a human-readable summary of (and not a substitute for) the [license](#). [Disclaimer](#).

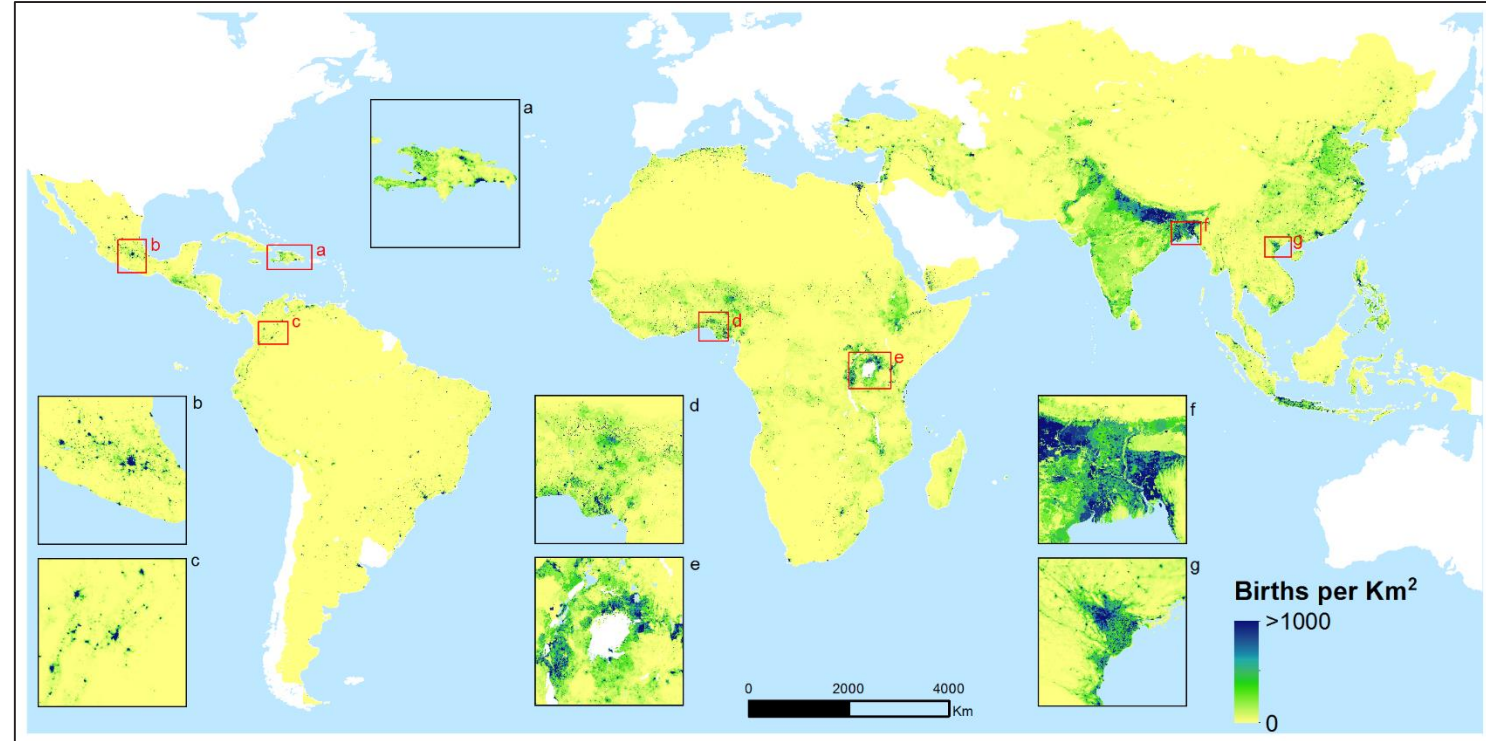
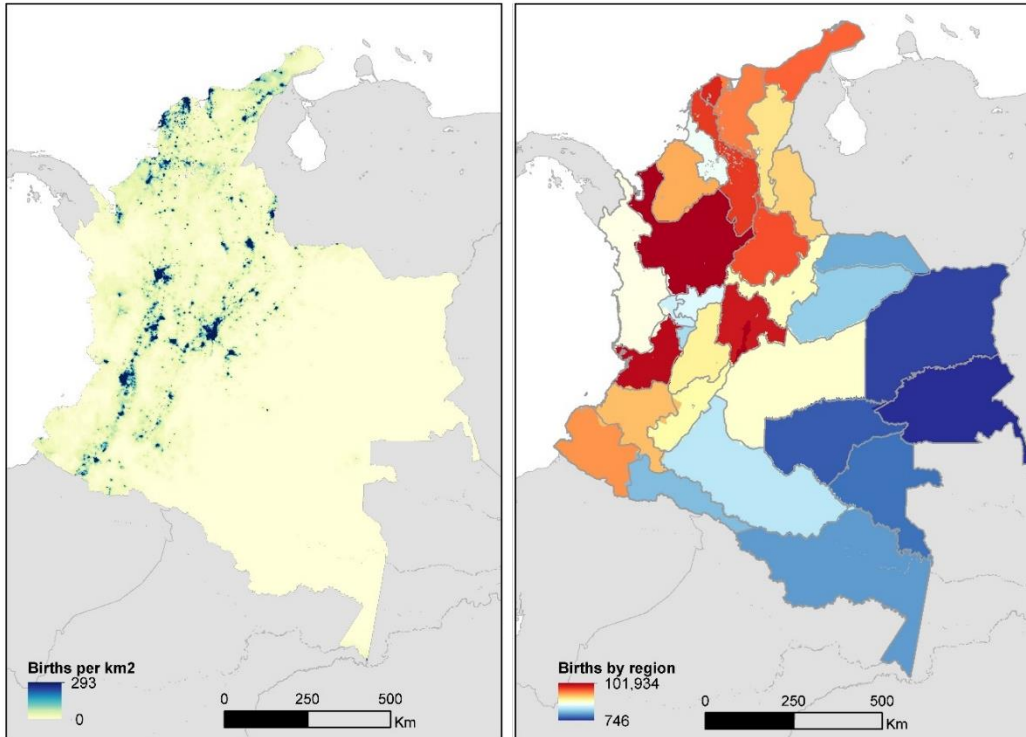
You are free to:

- Share** — copy and redistribute the material in any medium or format
- Adapt** — remix, transform, and build upon the material for any purpose, even commercially.

Uses

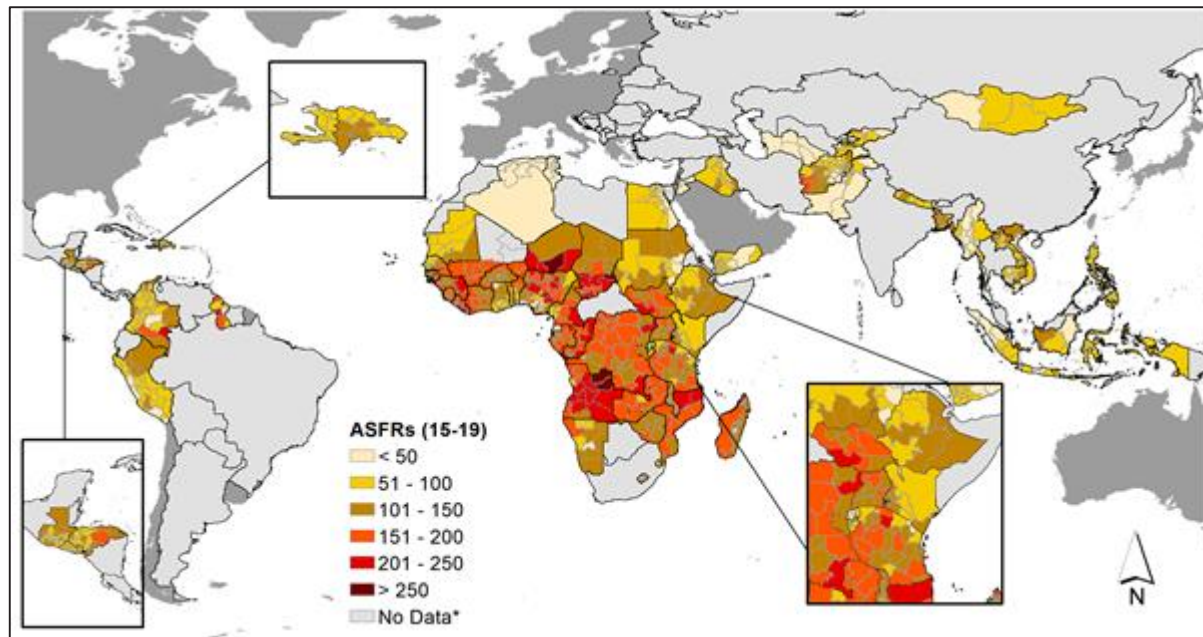
National overview

Global overview

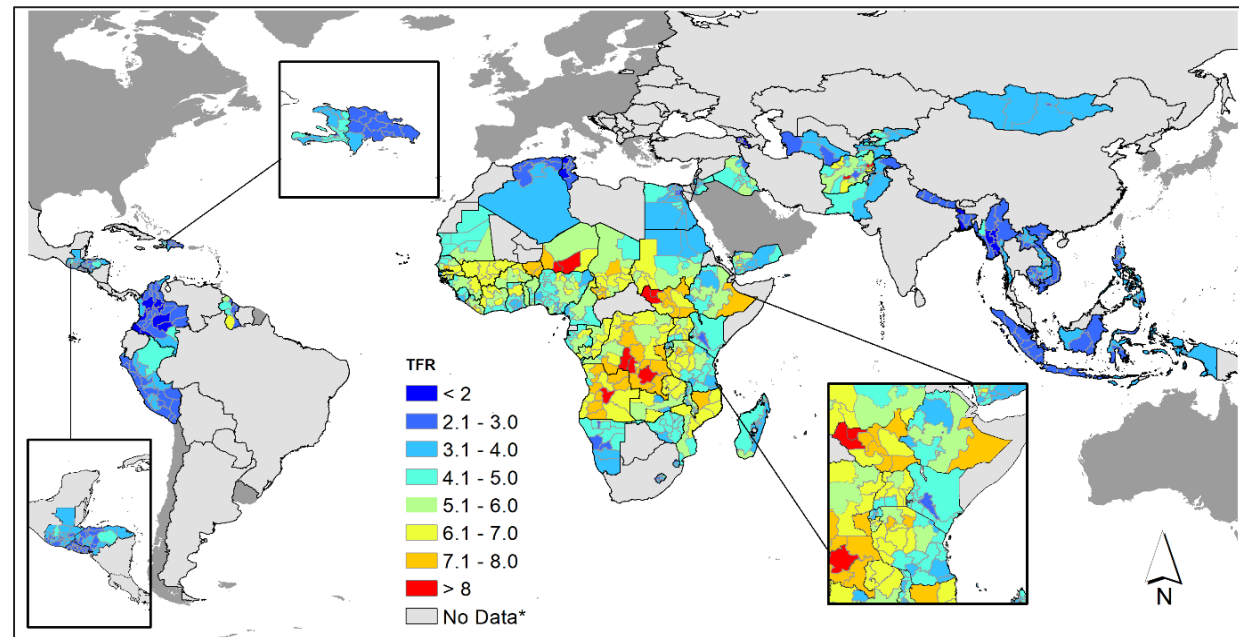


Using fertility data

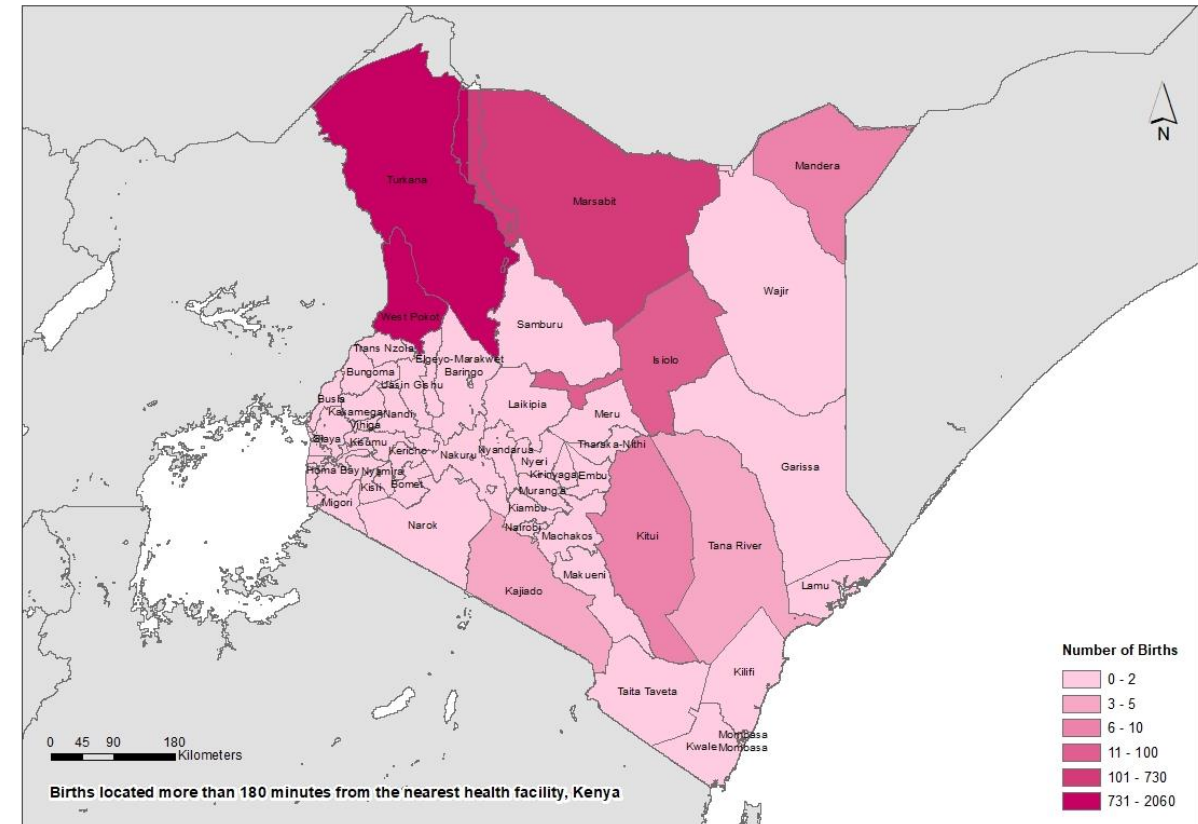
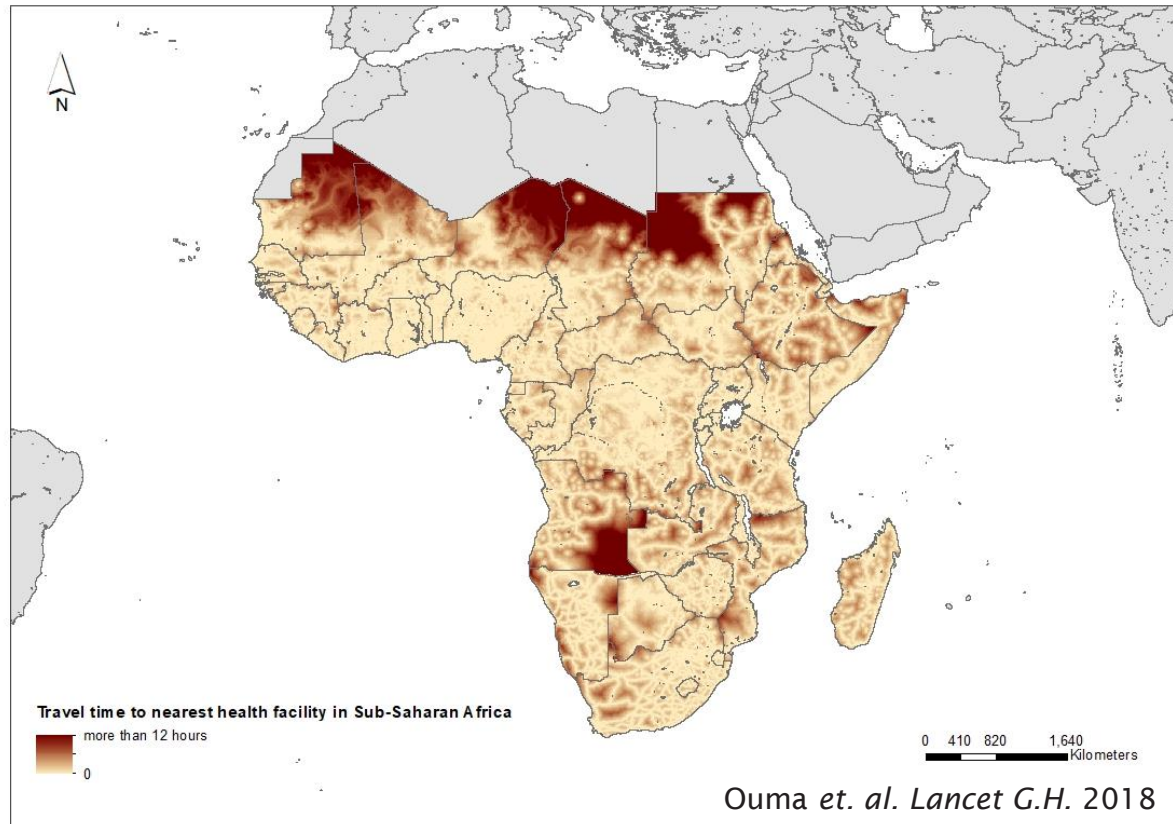
Age Specific Fertility Rates



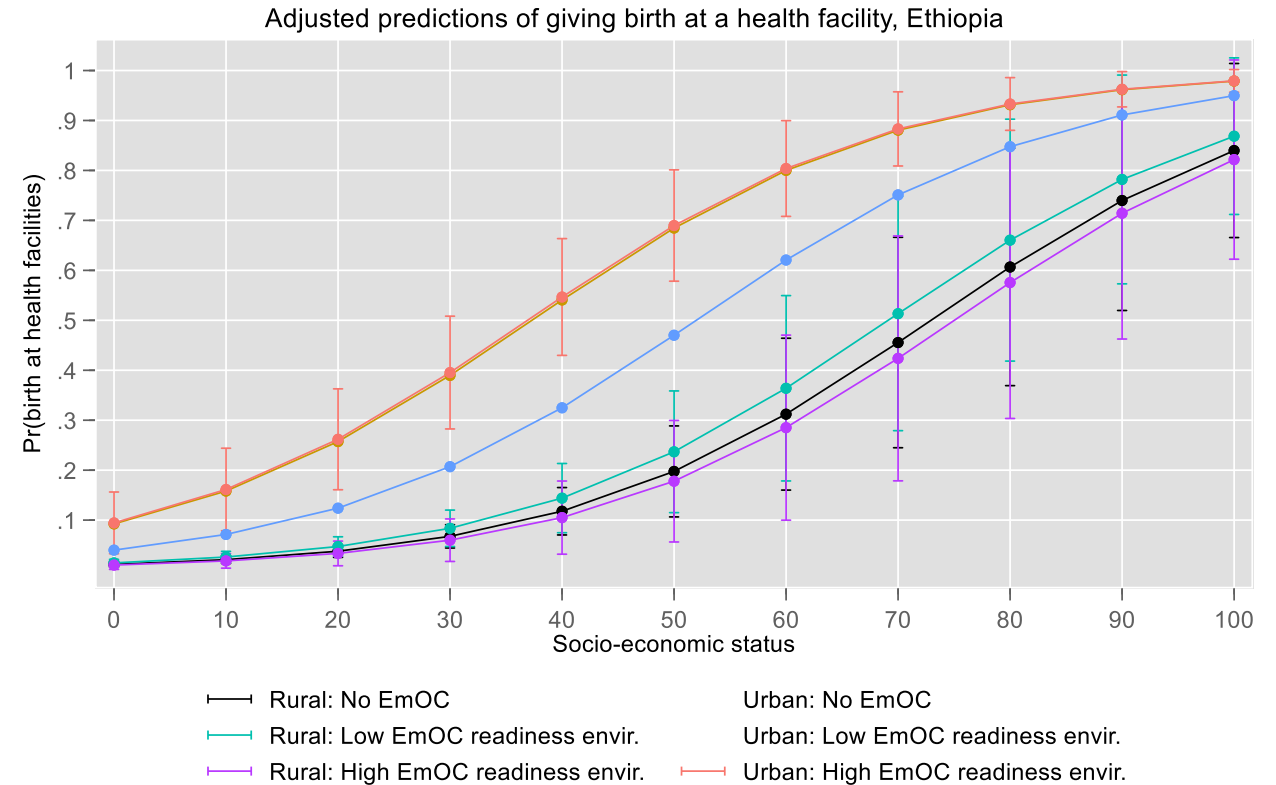
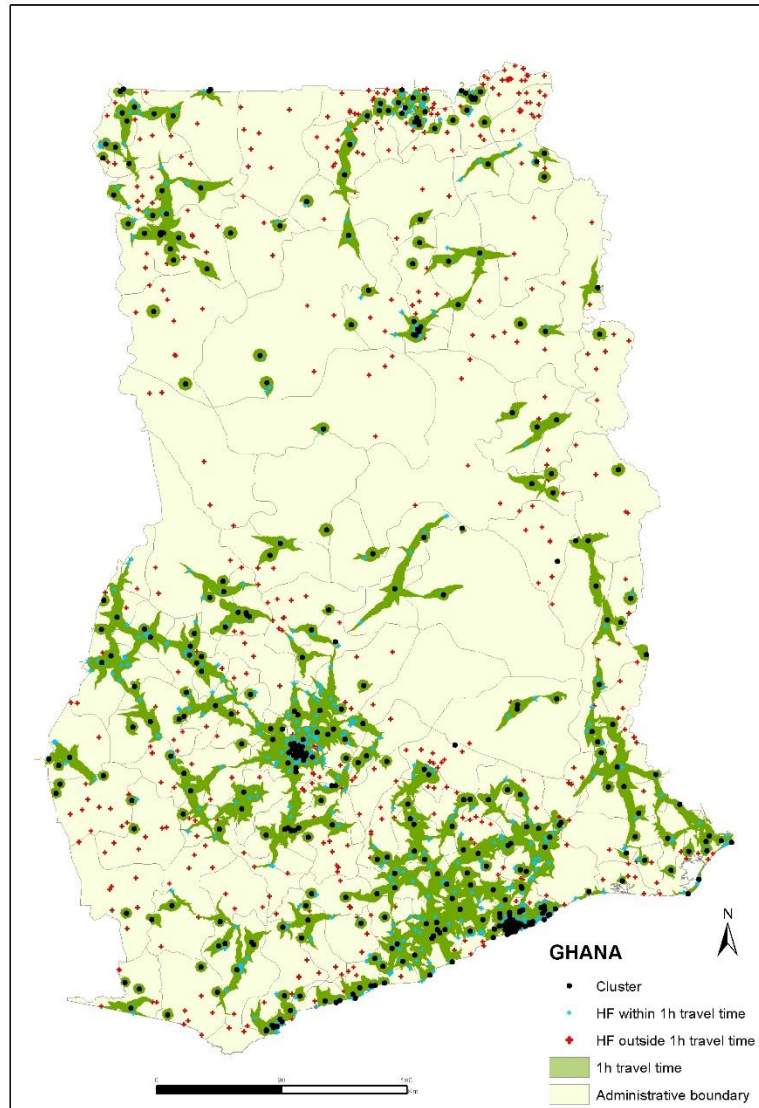
Total Fertility Rates



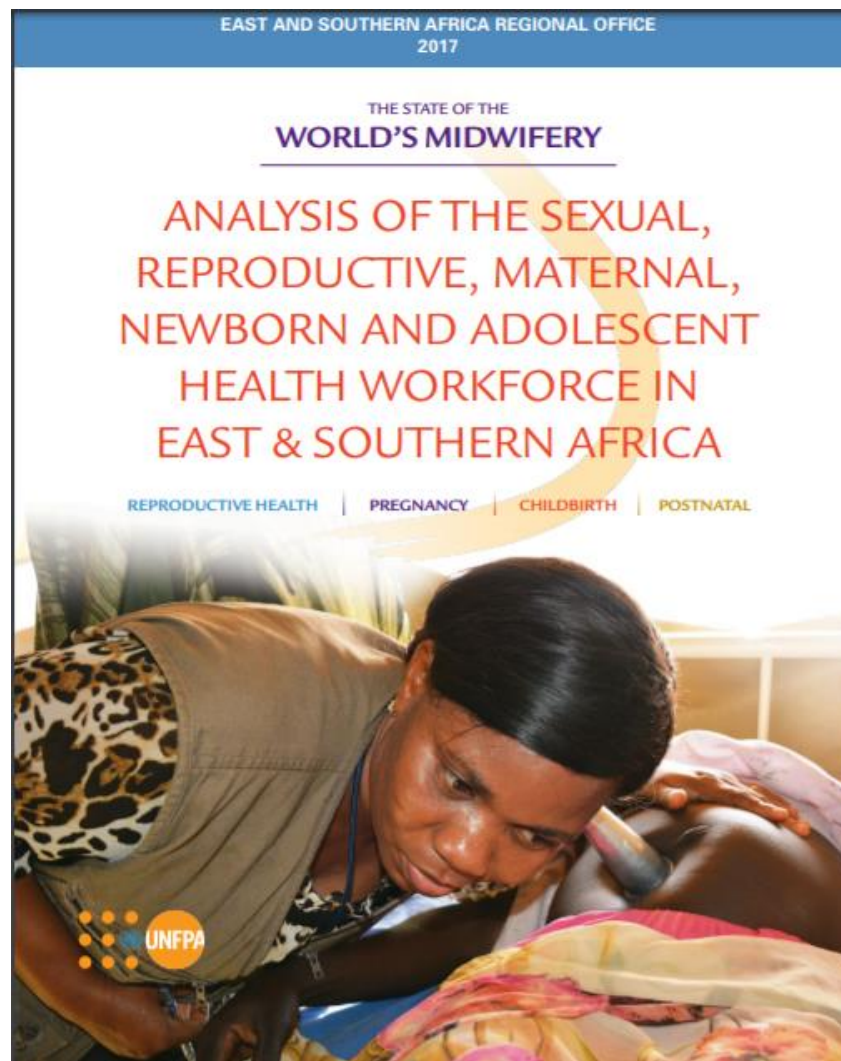
Combining other datasets



Quality of care and utilisation of births at health facilities



Flagship reports



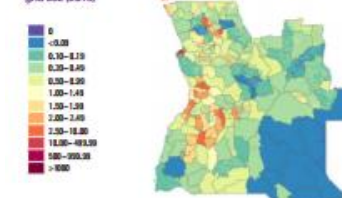
ANGOLA

In 2015, of an estimated total population of 25.0 million, 57% were living in rural areas and 5.6 million (22%) were women of reproductive age; the total fertility rate was 5.8. By 2030, the population is projected to increase by 57% to 39.4 million. To achieve universal access to sexual, reproductive, maternal, newborn and adolescent (SRMNAH) care, health services must respond to 1.8 million pregnancies per annum by 2030. The health system implications include how best to configure and equitably deploy the SRMNAH workforce to cover at least 100.8 million antenatal visits, 18.3 million births and 71.4 million post-partum/postnatal visits between 2015 and 2030.

WHAT WOMEN AND NEWBORNS NEED (2015)

1,386,000 PREGNANCIES A YEAR = HOW MANY EPISODES OF CARE?

Pregnancies per km²
gri cell (2015)



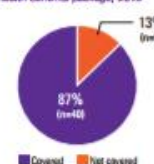
WORKFORCE AVAILABILITY (2015)

Country classification of staff working in SRMNAH	Time spent on SRMNAH %	
Midwives	NA	NA
Midwives, auxiliary	NA	NA
Nurse-midwives	-	-
Nurses	-	-
Nurses or nurse-midwives, auxiliary	NA	NA
Non-physician clinicians	NA	NA
Physicians, generalists	-	-
Obstetricians & gynaecologists	-	-

POTENTIAL MET NEED =
NO DATA

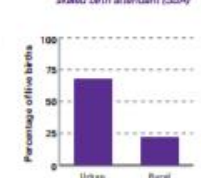
FINANCIAL ACCESSIBILITY

Percentage of 46 RMNH Essential interventions included in minimum health benefits package, 2015



GEOGRAPHICAL ACCESSIBILITY

Percentage of live births with a skilled birth attendant (SBAF)



MIDWIFERY EDUCATION¹

Minimum high-school requirement to start training	Grade 12+
Years of study required to qualify	4.5
Standardised curriculum? Year of last update	Yes, in process
Minimum number of supervised births in curriculum	20
Number of 2015 graduates/as % of all practising midwives	-/-
% of graduates employed in SRMNAH within one year	-%

MIDWIFERY REGULATION

Legislation exists recognising midwifery as an autonomous profession	No
A recognised definition of a professional midwife exists	Yes
A government body regulates midwifery practice	Yes
A licence is required to practise midwifery	Yes
A fee registry of licensed midwives exists	Yes
Number of EmHC basic signal functions that midwives are allowed to practice (out of a possible 7)	5
Midwives allowed to provide injectable contraceptives/intrauterine devices	Yes/Yes

PROFESSIONAL ASSOCIATIONS¹

Year of creation of professional associations	2002
Roles performed by professional associations:	
Continuing professional development	Yes
Advocating or representing members accused of misconduct	Yes
Advocating members on quality standards for SRMNAH care	Yes
Advocating the Government on policy documents related to SRMNAH	Yes
Negotiating work or salary issues with the Government	No

NA = not applicable; - = missing data

Further research

MENU ▾

nature
microbiology

Access provided by University of Southampton

Letter

Model-based projections of Zika virus infections in childbearing women in the Americas



T. Alex Perkins , Amir S. Siraj, Corrine W. Ruktanonchai, Moritz U. G. Kraemer & Andrew J. Tatem*Nature Microbiology* **1**, Article number: 16126
(2016)

Received: 17 February 2016

Accepted: 28 June 2016

SCIENTIFIC DATA  Altmetric: 41[More detail >>](#)Data Descriptor | [OPEN](#)

Spatiotemporal incidence of Zika and associated environmental drivers for the 2015–2016 epidemic in Colombia

Amir S. Siraj , Isabel Rodriguez-Barraquer, Christopher M. Barker, Natalia Tejedor-Garavito, Dennis Harding, Christopher Lorton, Dejan Lukacevic, Gene Oates, Guido Espana, Moritz U.G. Kraemer, Carrie Manore, Michael A. Johansson, Andrew J. Tatem, Robert C. Reiner & T. Alex Perkins *Scientific Data* **5**, Article number: 180073
(2018)

doi:10.1038/sdata.2018.73

[Download Citation](#)

Received: 03 August 2017

Accepted: 19 March 2018

Published: 24 April 2018

Further information



www.worldpop.org

 @WorldPopProject

E-mail: ntg@geodata.soton.ac.uk

