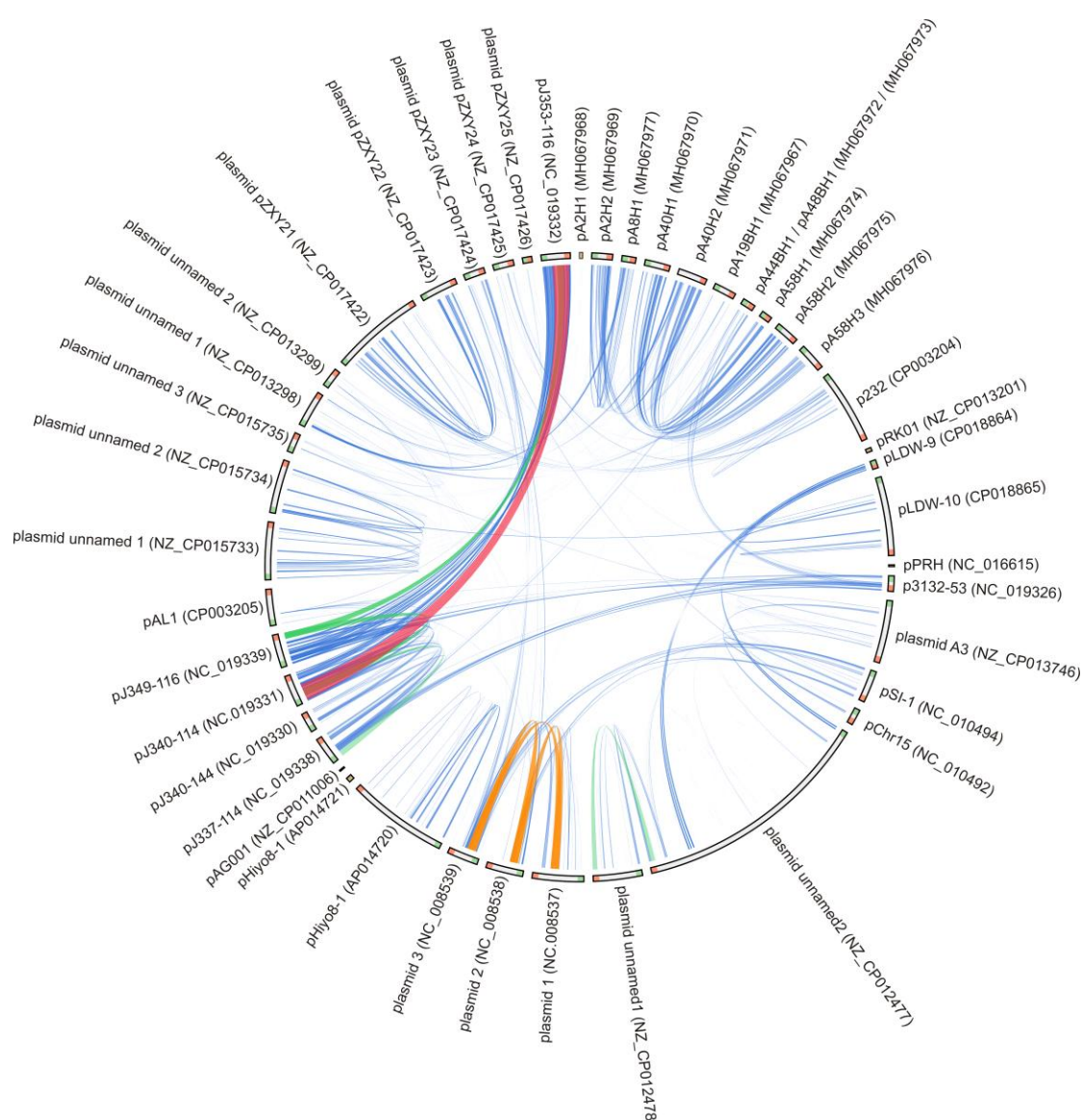


## Supplementary Material

# Insight into the Diversity and Possible Role of Plasmids in the Adaptation of Psychrotolerant and Metalotolerant *Arthrobacter* spp. to Extreme Antarctic Environments

Krzysztof Romaniuk, Piotr Golec, Lukasz Dziewit\*

\* Correspondence: Dr. Lukasz Dziewit: ldziewit@biol.uw.edu.pl



**Figure S1. Comparison of the nucleotide sequences of the *Arthrobacter* plasmids.** Accession numbers are presented in parentheses. The color ribbons connecting particular plasmids link similar DNA regions. Red and then yellow color represents the best much, while green and finally blue corresponds to the weakest similarity.