



What researchers really want

and what it means for researcher-centric services

Steven Chang

Research Data Outreach Officer (Library)

Eva Fisch

Manager, Research (Library)

Michelle Hosking

Lead Business Analyst, Research Data

La Trobe University

Progress with research data management

- **Systems**

- interviews with researchers' identifying data storage requirements
- a Research Data Management Planning (RDMP) Tool
- Figshare (Researchdata.latrobe)
- LabArchives electronic laboratory notebook
- Research Data Storage Matrix

- **Services**

- Data ready guide
- Classes, consultations, and digital research drop-ins



Takeup at La Trobe University so far

- 3000 researchers at LTU
 - 302 LTU Trobe researchers on Figshare
- 50 RDM plans a month – from Human ethics applicants
 - in 2018 over 95% of human ethics applications had a plan
 - lack of plans for other areas
- Classes
 - approximately 50% of those registering attend



What does the literature tell us?

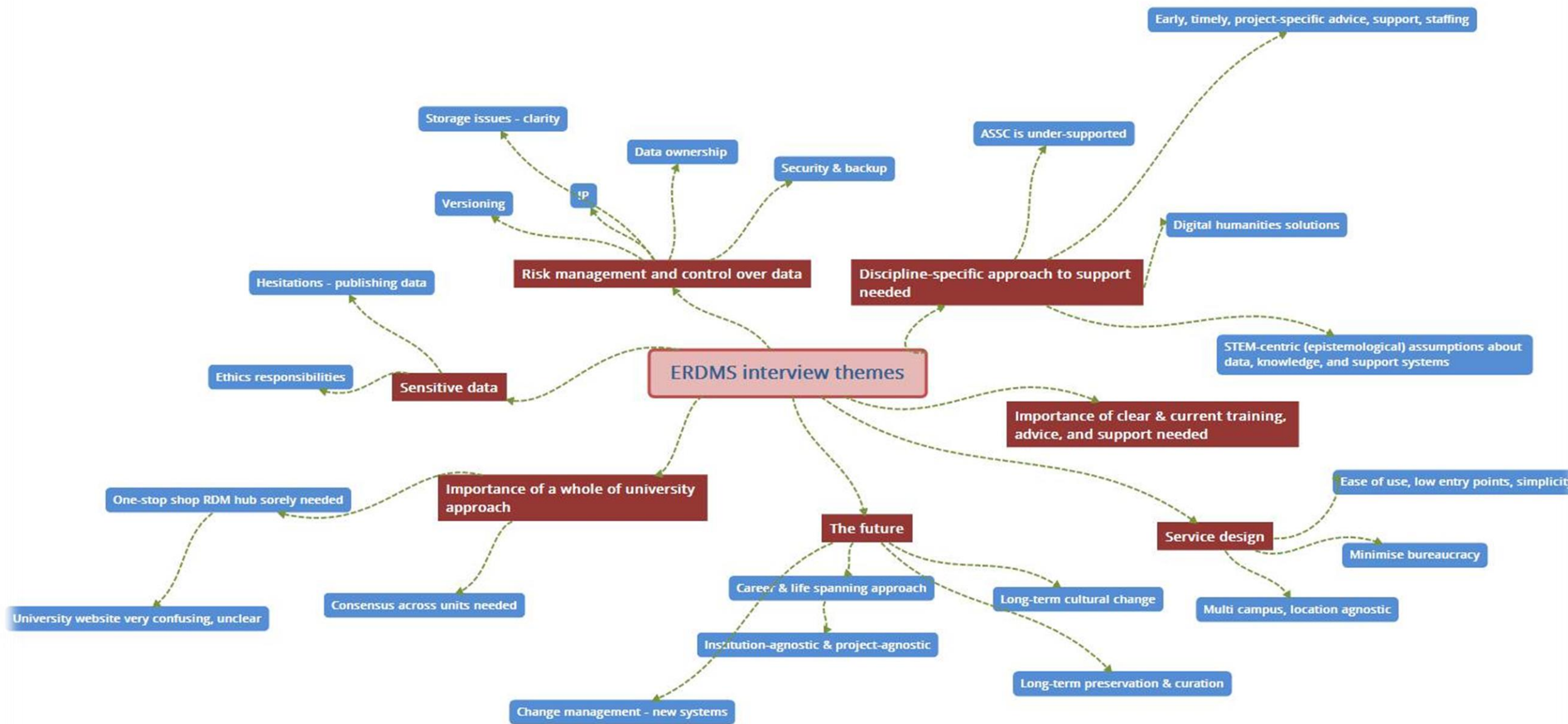
- Attitudes/ Beliefs
- Disciplinary norms
- Knowledge
- Incentives
- Resourcing factors



Researcher interviews- reanalysed

- Semi-structured interviews & focus groups
- 127 researchers
- Range of disciplines: Arts, Social Sciences, and Commerce (49%) and Science, Health, and Engineering (51%)
- Diverse, multi-campus selection of interviewees





Key themes

- Data publishing/ownership
- Risk management/Sensitive data
- Service and support
- System fatigue
- Ethics
- Funders and compliance
- Storage + managing paper records
+ metadata + data volume+ sharing



Themes from arts, business, law and humanities researchers

- Feel that they are left out in the RDM sweepstakes
- Digital Humanities
- Want discipline specific , tailored support
- What are the incentives, reward and recognition for data curation and publishing
- Confusion about IP/Data ownership

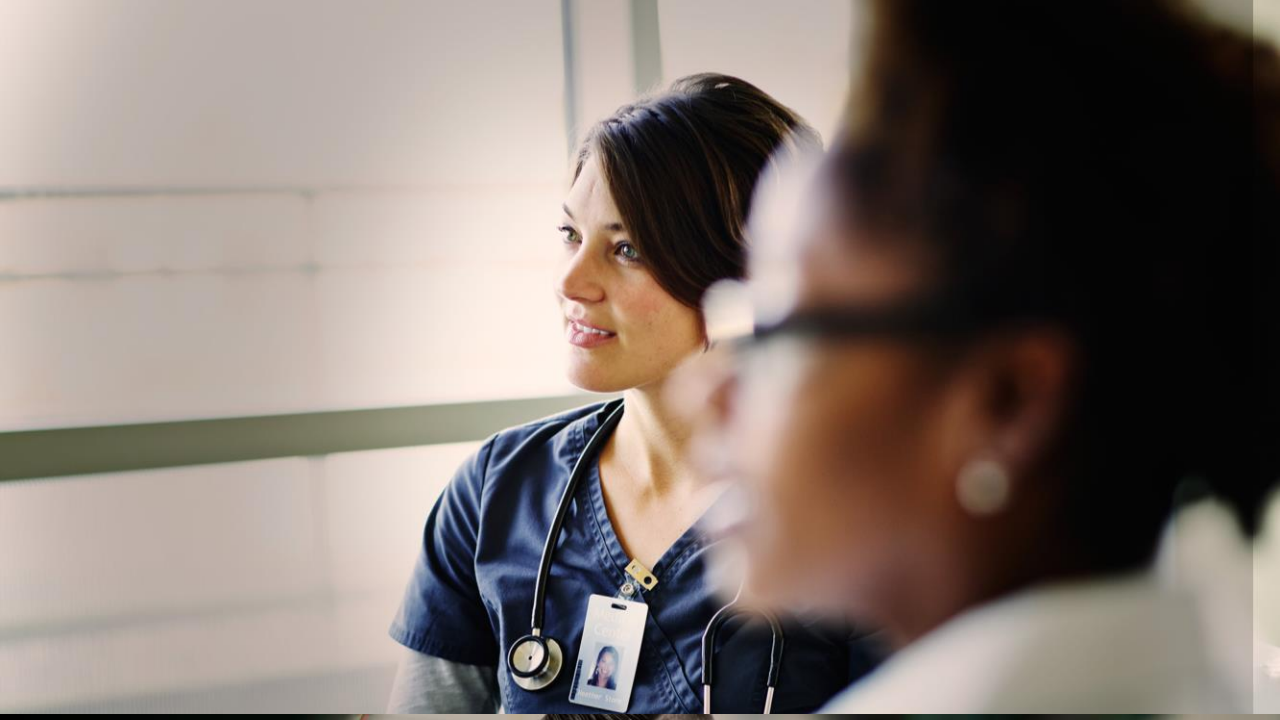
Themes from science, health, and engineering researchers

- Want support and training at a lab, dept or research group level
- Data storage and collaboration with partners a very big issue
- Want maximum value from their own data
- Graduate Researchers – data access issues and time to complete

Turning evidence into practice: where to from here?

- Co-design approach to developing researcher services, tools and support
- Redesign of research data management planning tool
- Working in partnership with the Human ethics committee/staff
- Build relationships with ASSC technology coordinators and ICT storage group





Thank you

Steven Chang

s.chang@latrobe.edu.au

Eva Fisch

e.fisch@latrobe.edu.au

