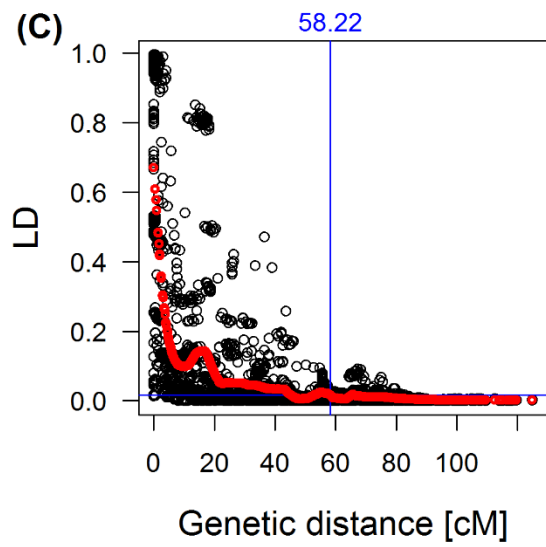
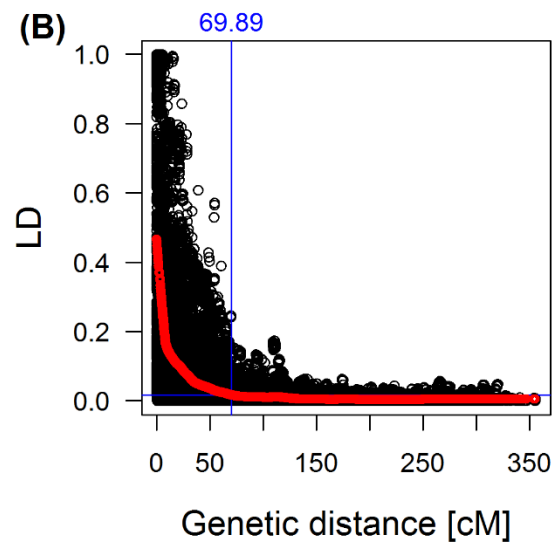
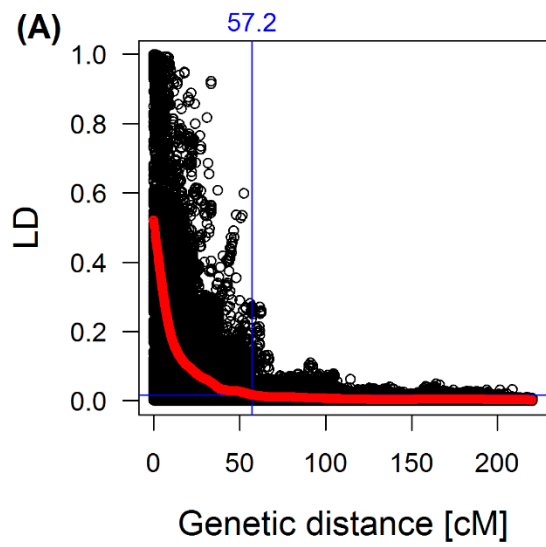
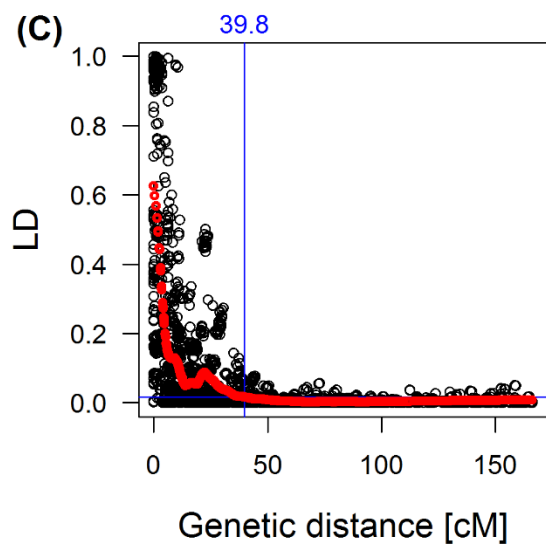
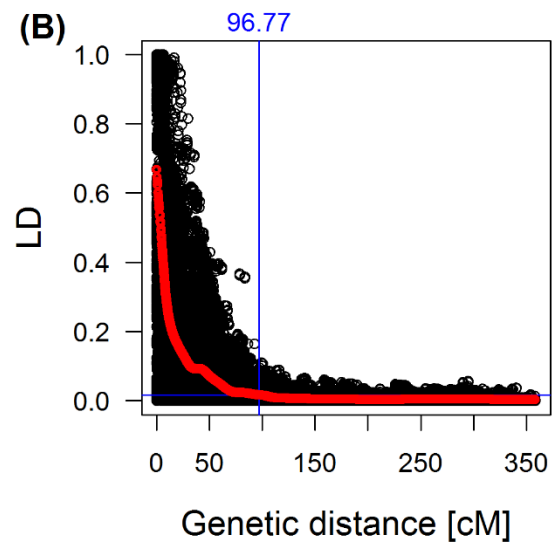
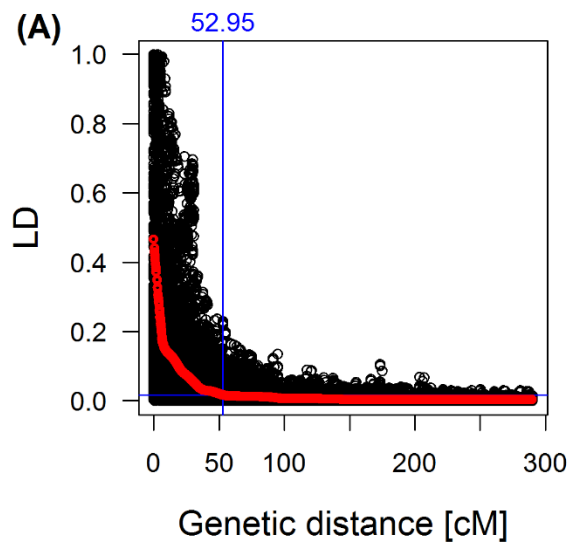


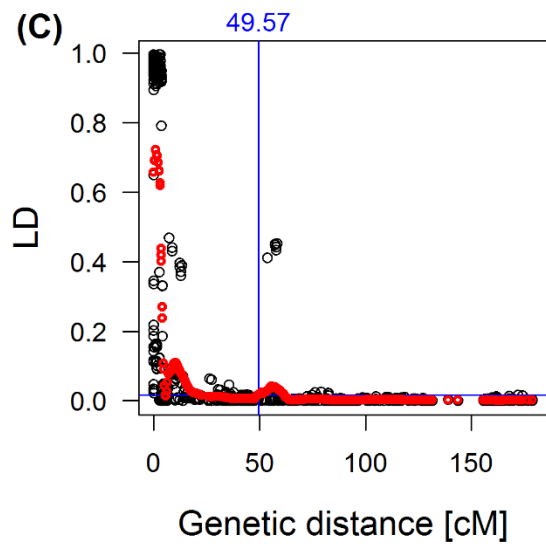
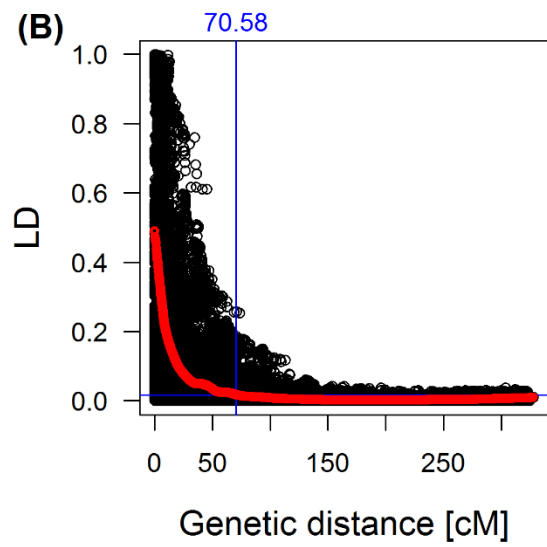
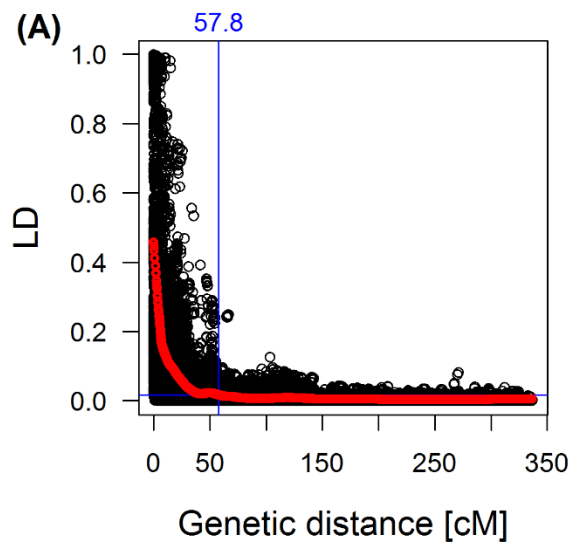
## Chromosome 1



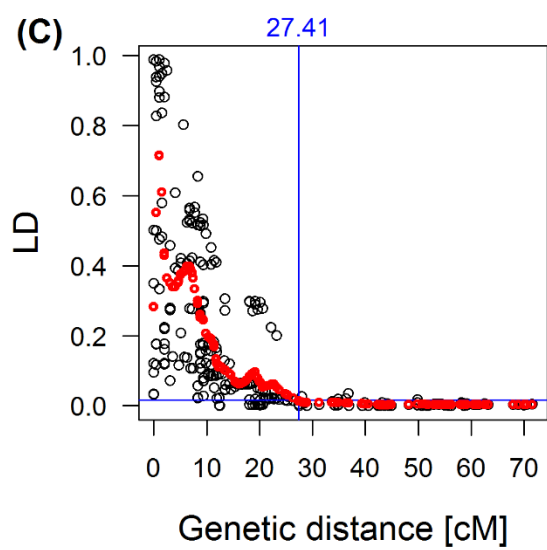
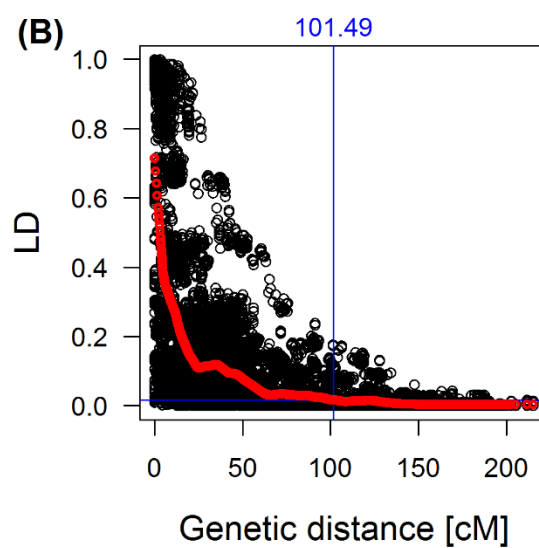
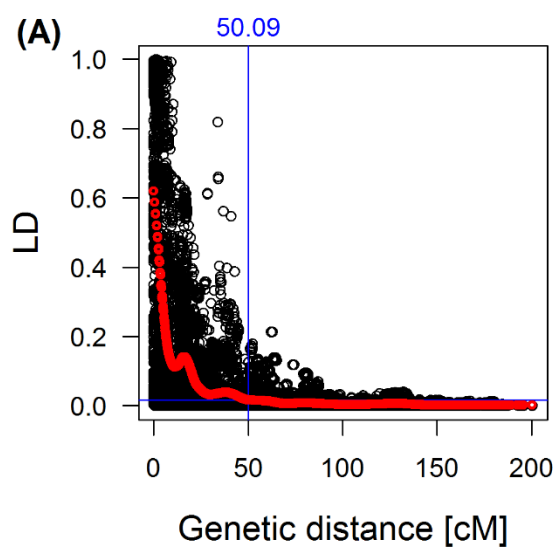
## Chromosome 2



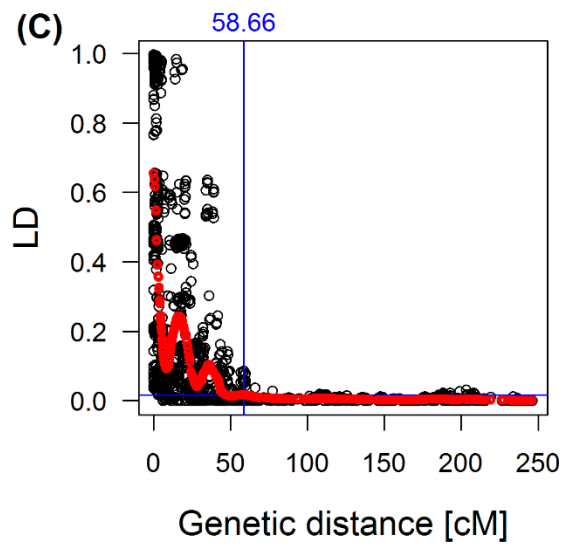
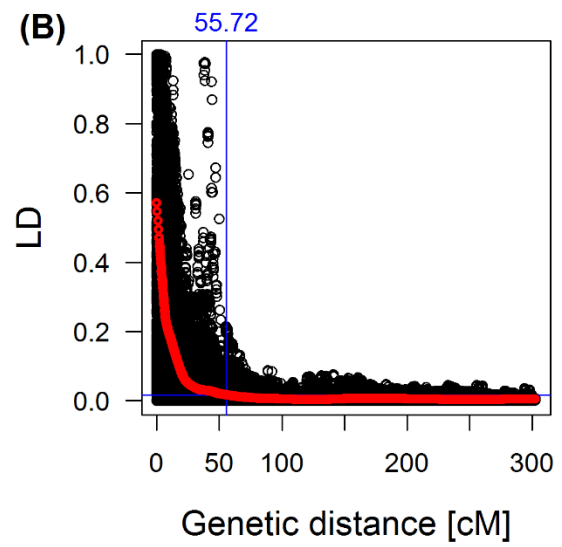
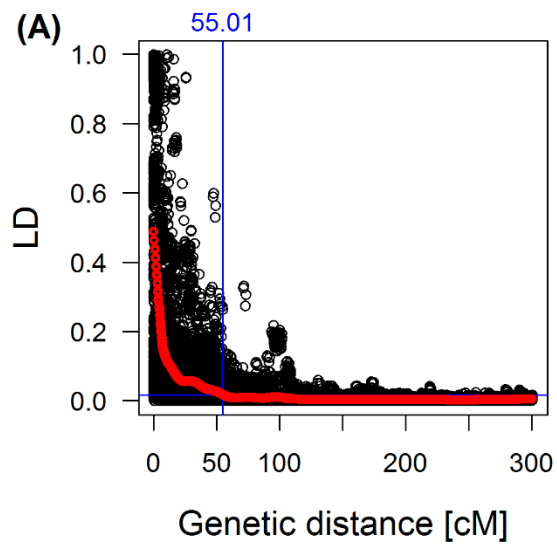
### Chromosome 3



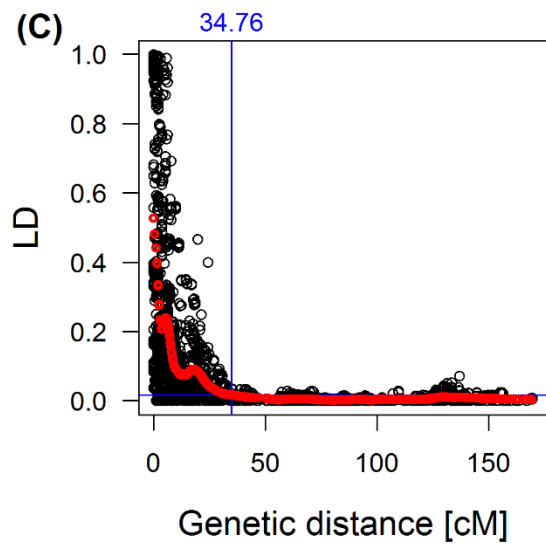
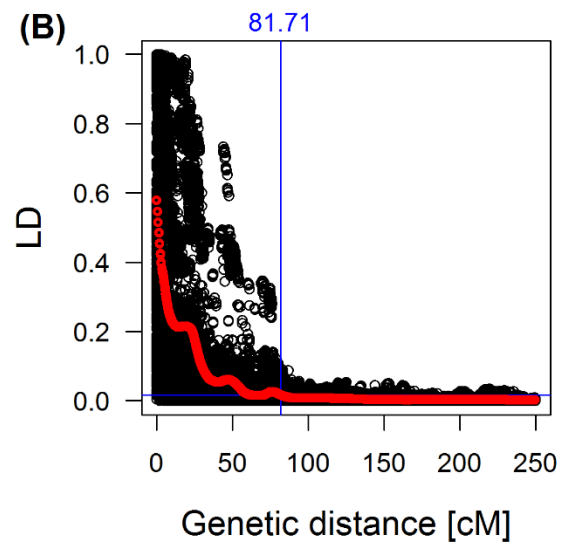
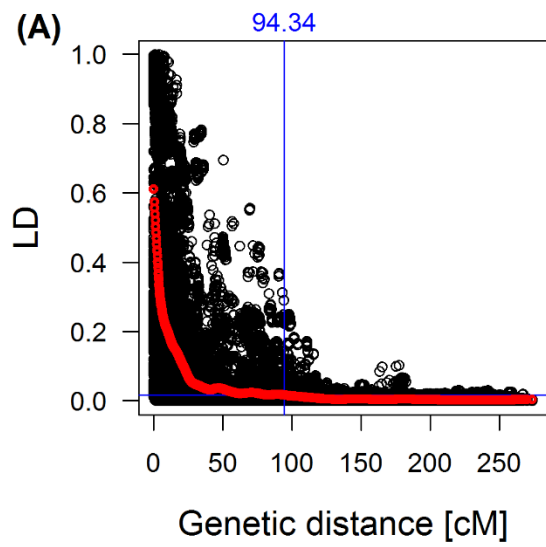
## Chromosome 4



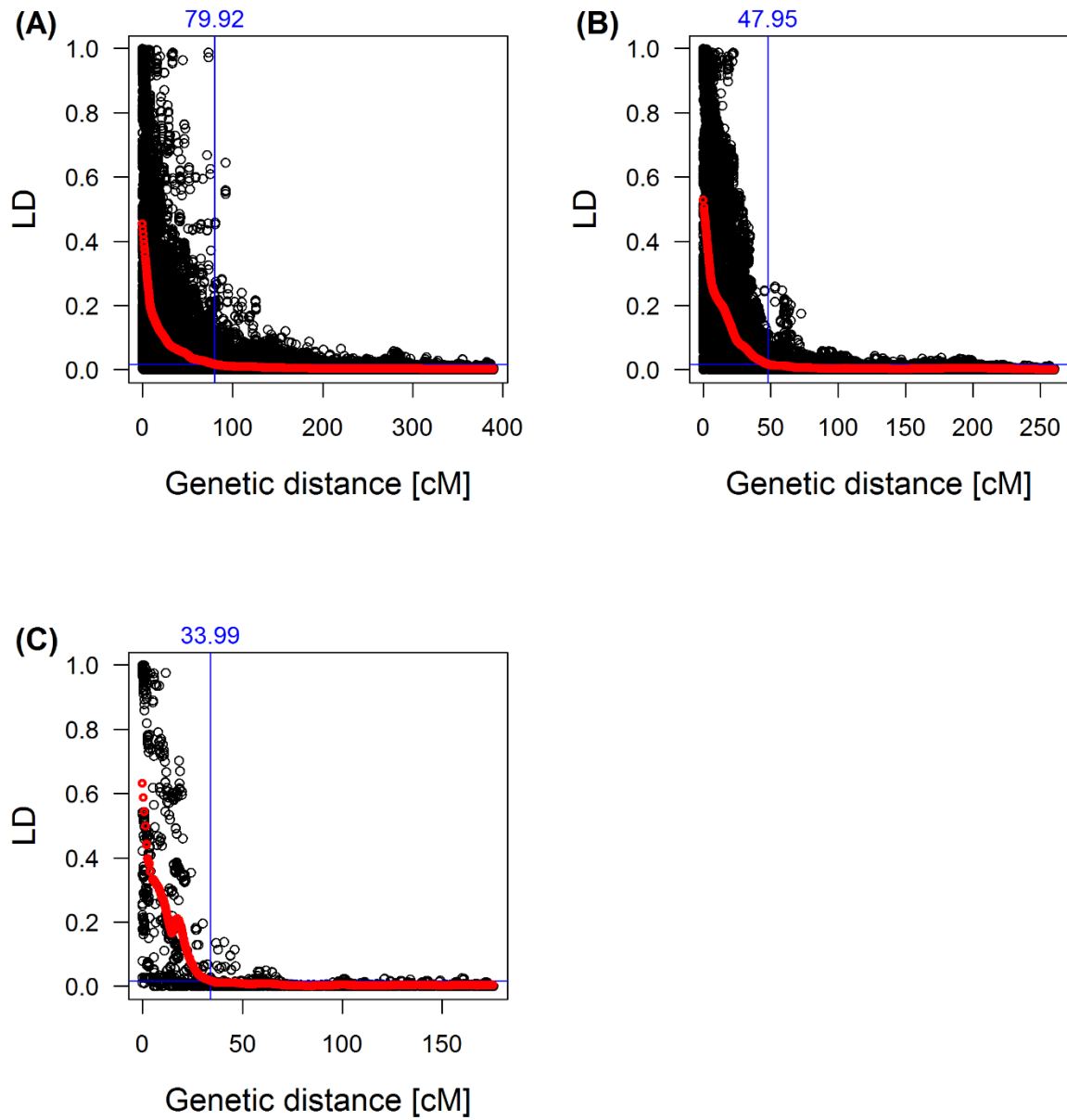
## Chromosome 5



## Chromosome 6



## Chromosome 7



**Figure S7:** Linkage disequilibrium (LD) decay. (A), (B), and (C) show LD ( $r^2$ ) decay of individual chromosomes from A, B, and D genome, respectively. Horizontal blue line indicates the population-specific critical  $r^2$  value (0.017). Vertical blue line indicates genetic distance where LD decreased to  $< 0.017$ . Red line marks the fitted loess curve.