

Supporting Information

The effect of reduced sulfur speciation on the chemoautotrophic pyrite oxidation with nitrate

Ruiwen Yan ^a, Andreas Kappler ^b, E. Marie Muehe ^c, Klaus-Holger Knorr ^d, Marcus A. Horn ^e,

Alexander Poser ^f, Regina Lohmayer ^g, Stefan Peiffer ^{a, *}

^a Department of Hydrology, BayCEER, University of Bayreuth, 95440 Bayreuth, Germany

^b Geomicrobiology Group, Eberhard-Karls-University Tuebingen, 72076 Tuebingen, Germany

^c Earth System Science, Stanford University, Stanford, CA-94305, U.S.A.

^d Institute of Landscape Ecology, Ecohydrology and Biogeochemistry Group, University of Muenster, 48149 Muenster, Germany

^e Institute of Microbiology, Leibniz University Hannover, 30419 Hannover, Germany.

^f Department of Isotope Biogeochemistry, Helmholtz-Centre for Environmental Research UFZ, 04318 Leipzig, Germany

^g Environmental Geochemistry Group, BayCEER, University of Bayreuth, 95440 Bayreuth, Germany

Contents

Description	Page
Figure S1, Tables S1-S2 EDX data of ground pyrite after preparation	S2
Figure S2 Product concentration from the reaction between ground pyrite and nitrate in the presence of <i>Thiobacillus denitrificans</i> at a cell concentration of 2×10^4 cells ml ⁻¹ under anoxic, pH-neutral conditions.	S3
Figure S3 Product concentration from the control experiment in the presence of <i>Thiobacillus denitrificans</i> at a cell concentration of 2×10^4 cells ml ⁻¹ under anoxic, pH-neutral conditions.	S4

Figure S1. Scanning electron microscopy image of ground pyrite.

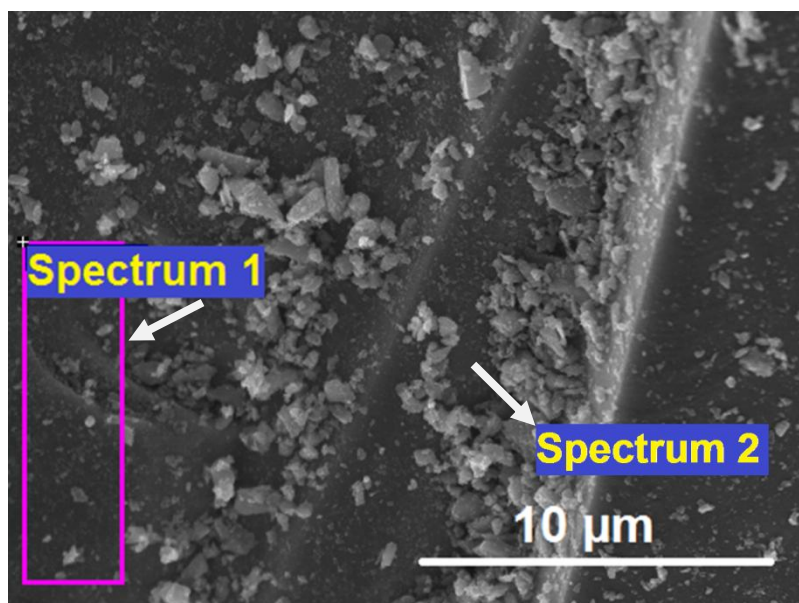


Table S1. Elemental analysis by EDX of a fraction of the pyrite surface (spectrum 1) with only few nano-particles.

Element	Mass %	Atom %
C	4	11
S	51	58
Fe	46	30
total	100	

Table S2. Elemental analysis by EDX of a fraction of the pyrite surface (spectrum 2) covered with a high density of nano-particles.

Element	Mass %	Atom %
C	3	11
S	50	59
Fe	46	31
total	100	

Figure S2. Product concentration (nitrite (●), nitrate (▼), sulfate (■)) from the reaction between ground pyrite (50 mM) and nitrate (approximately 10 mM) in the presence of *Thiobacillus denitrificans* at a cell concentration of 2×10^4 cells ml⁻¹ under anoxic, pH-neutral conditions. Error bars are standard deviations calculated from three independent replicates. The nitrite symbols are hidden behind the sulfate ones.

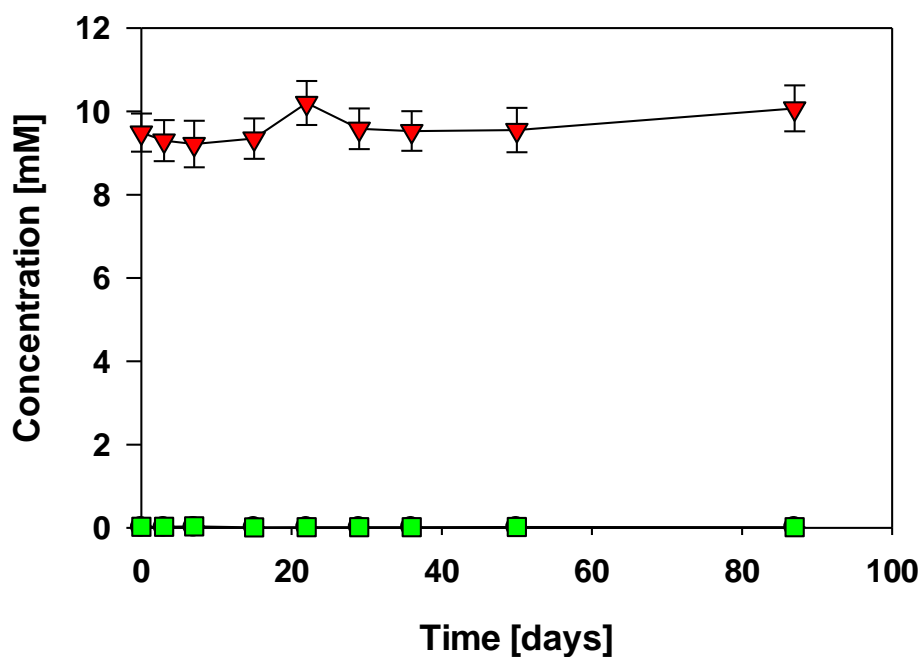


Figure S3. Product concentration (nitrite (●), nitrate (▼), sulfate (■)) from the control experiment of (A) ground pyrite (50 mM) and nitrate (approximately 10 mM) in the absence of *Thiobacillus denitrificans*, (B) ground pyrite (50 mM) and *Thiobacillus denitrificans* at a cell concentration of 2×10^4 cells ml^{-1} in the absence of nitrate, (C) nitrate (approximately 10 mM) and *Thiobacillus denitrificans* at a cell concentration of 2×10^4 cells ml^{-1} in the absence of pyrite, (D) elemental sulfur (50 mM) and nitrate (approximately 10 mM) in the presence of *Thiobacillus denitrificans* at a cell concentration of 2×10^4 cells ml^{-1} under anoxic, pH-neutral conditions. Concentrations were calculated as the mean values of two independent replicates. The nitrite symbols are hidden behind the sulfate ones (A-D).

