

Figure S2. Leave-One-Prey-Out (LOPO) Analysis. Panels depict prey composing the diet when a FA profile is removed from the prey library and used in QFASA as the predator profile. Low prey confounding is indicated when most of the removed prey's "diet" is composed of that same prey item (i.e. good model discrimination among prey species). The prey library is presented alphabetically, excluding prey with single FA profile.

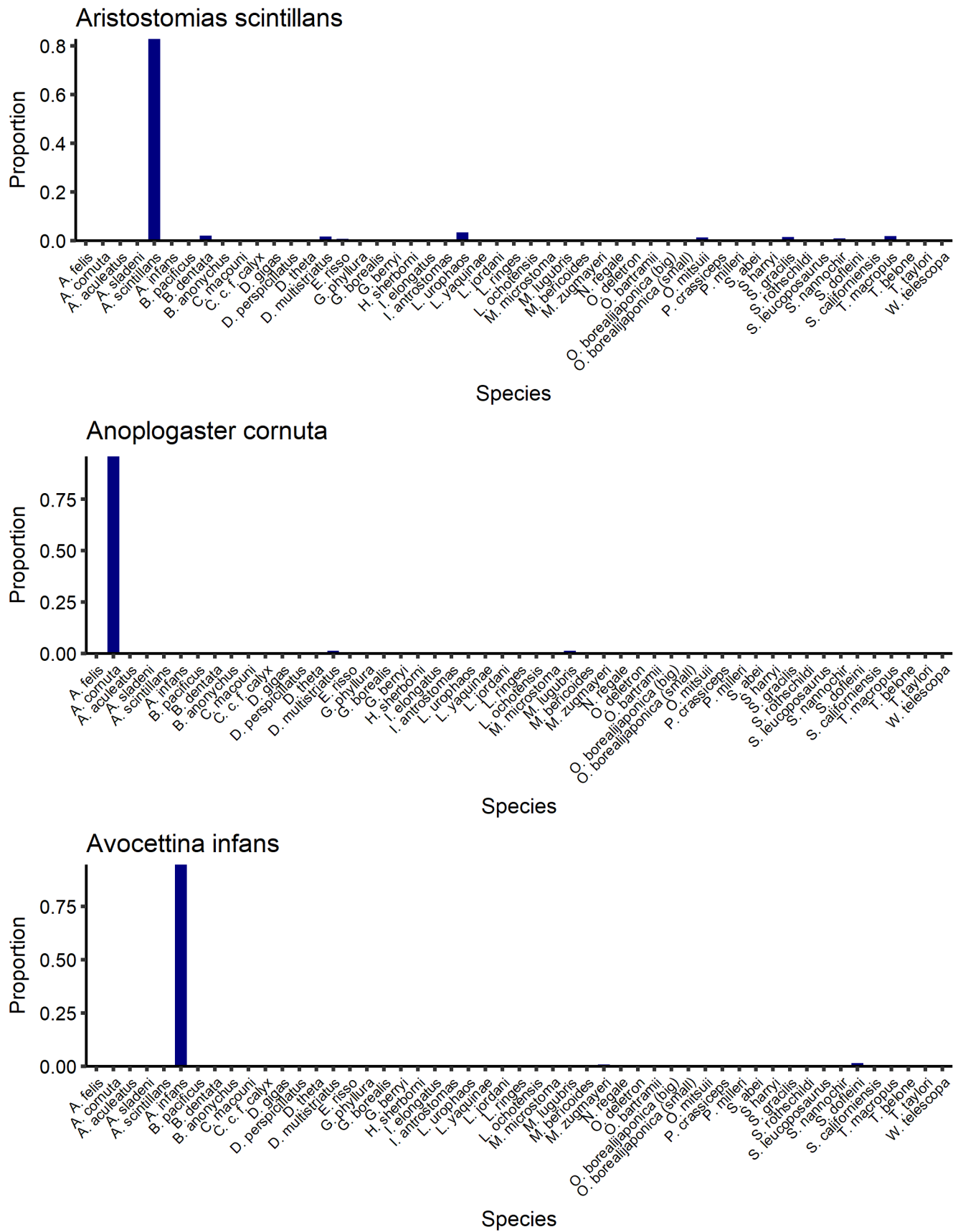


Figure S2 (continued). LOPO Analysis.

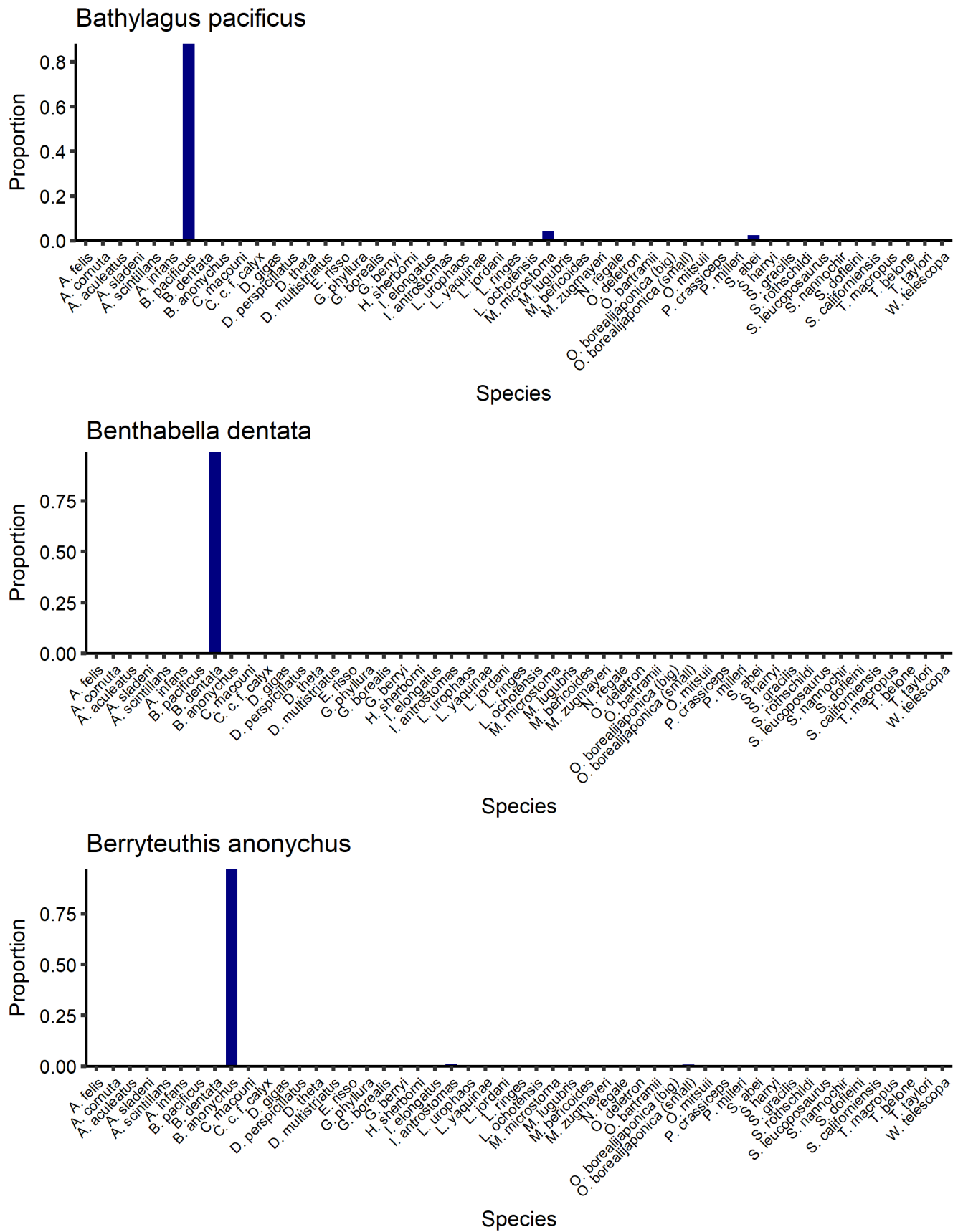


Figure S2 (continued). LOPO Analysis.

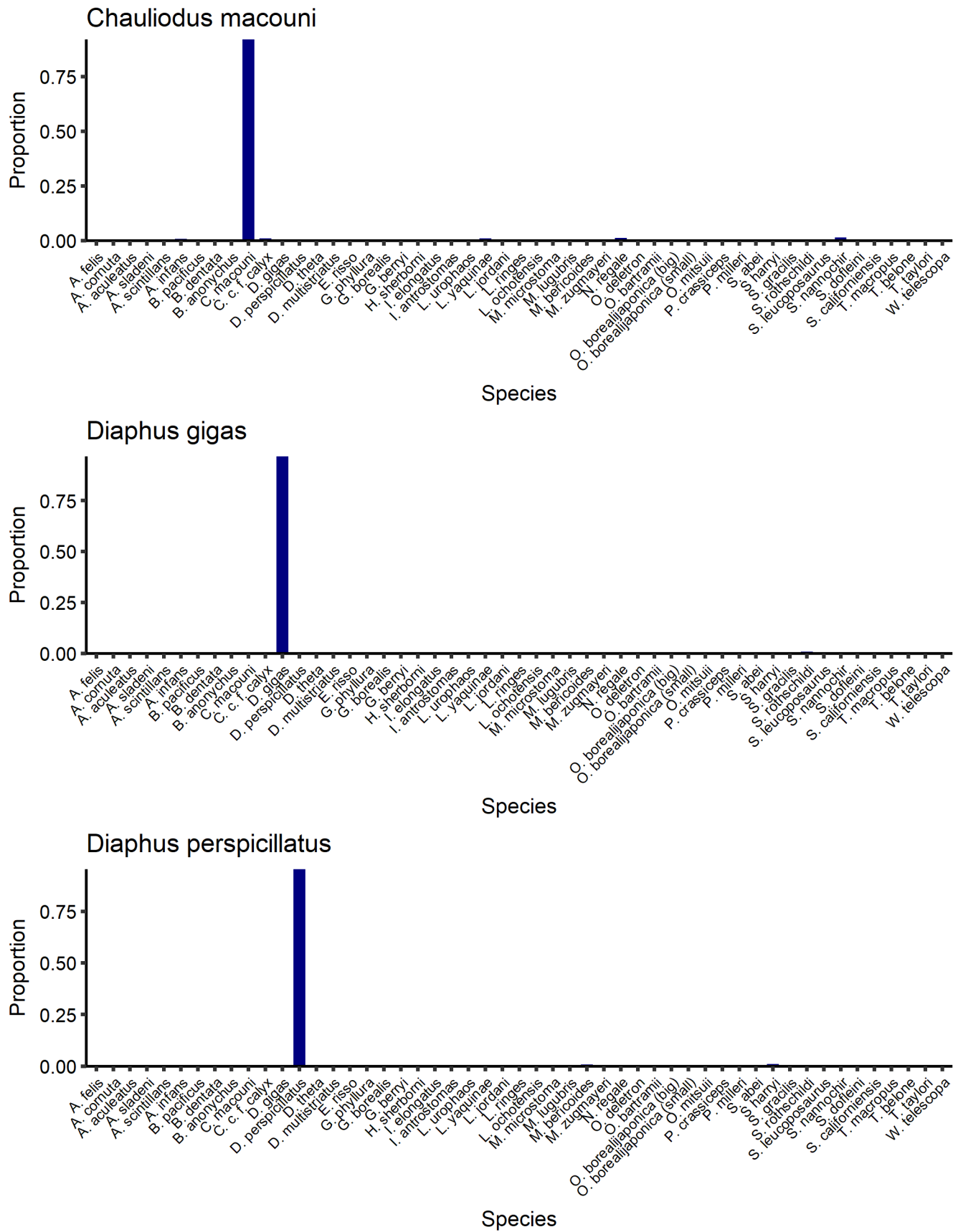


Figure S2 (continued). LOPO Analysis.

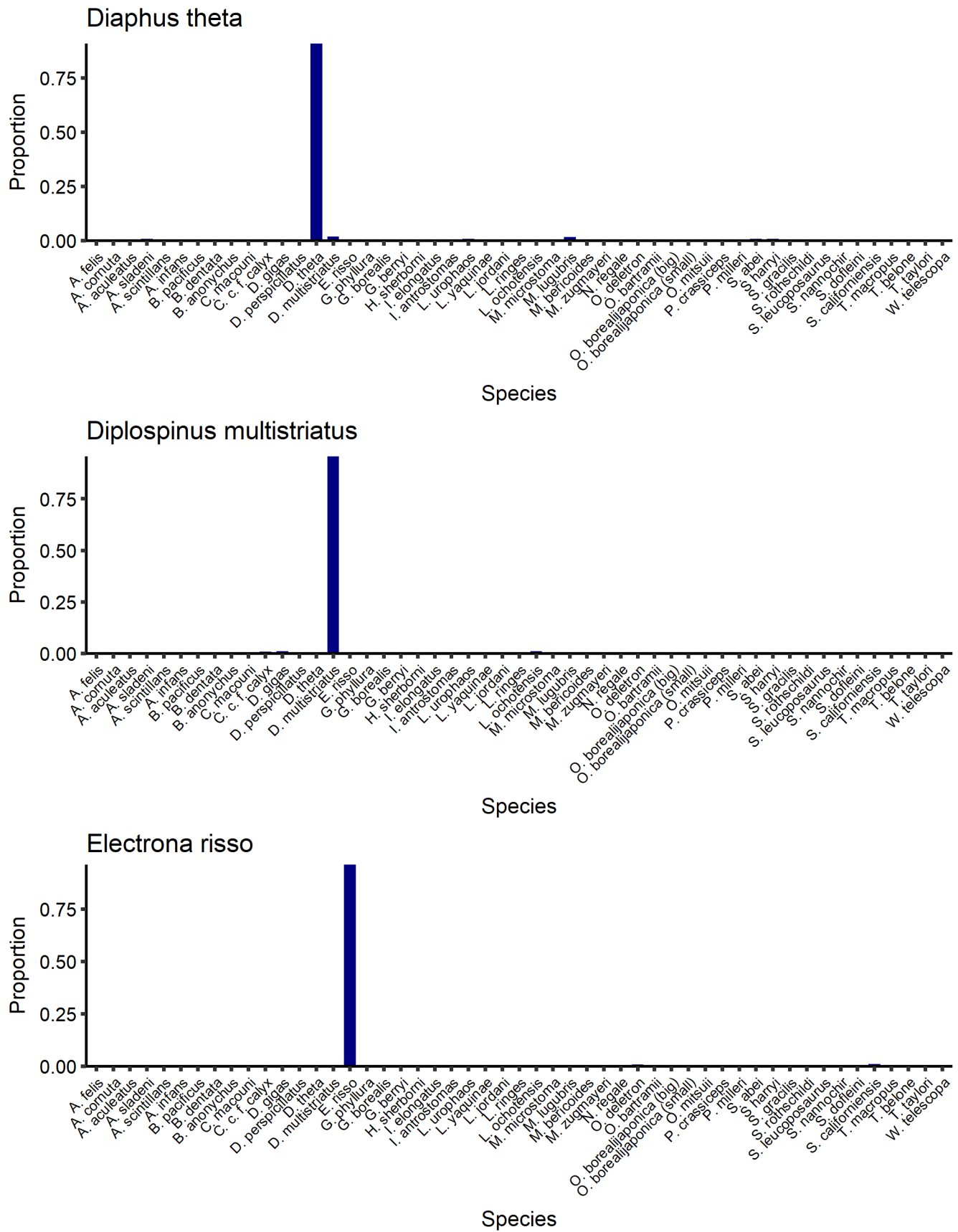
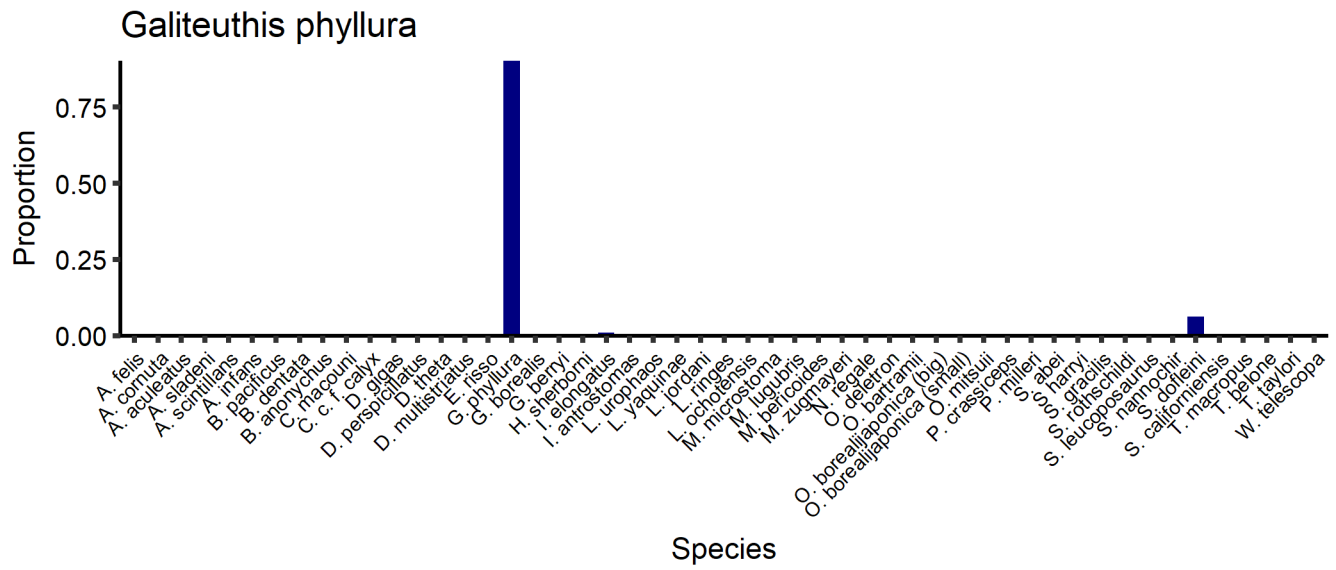


Figure S2 (continued). LOPO Analysis.



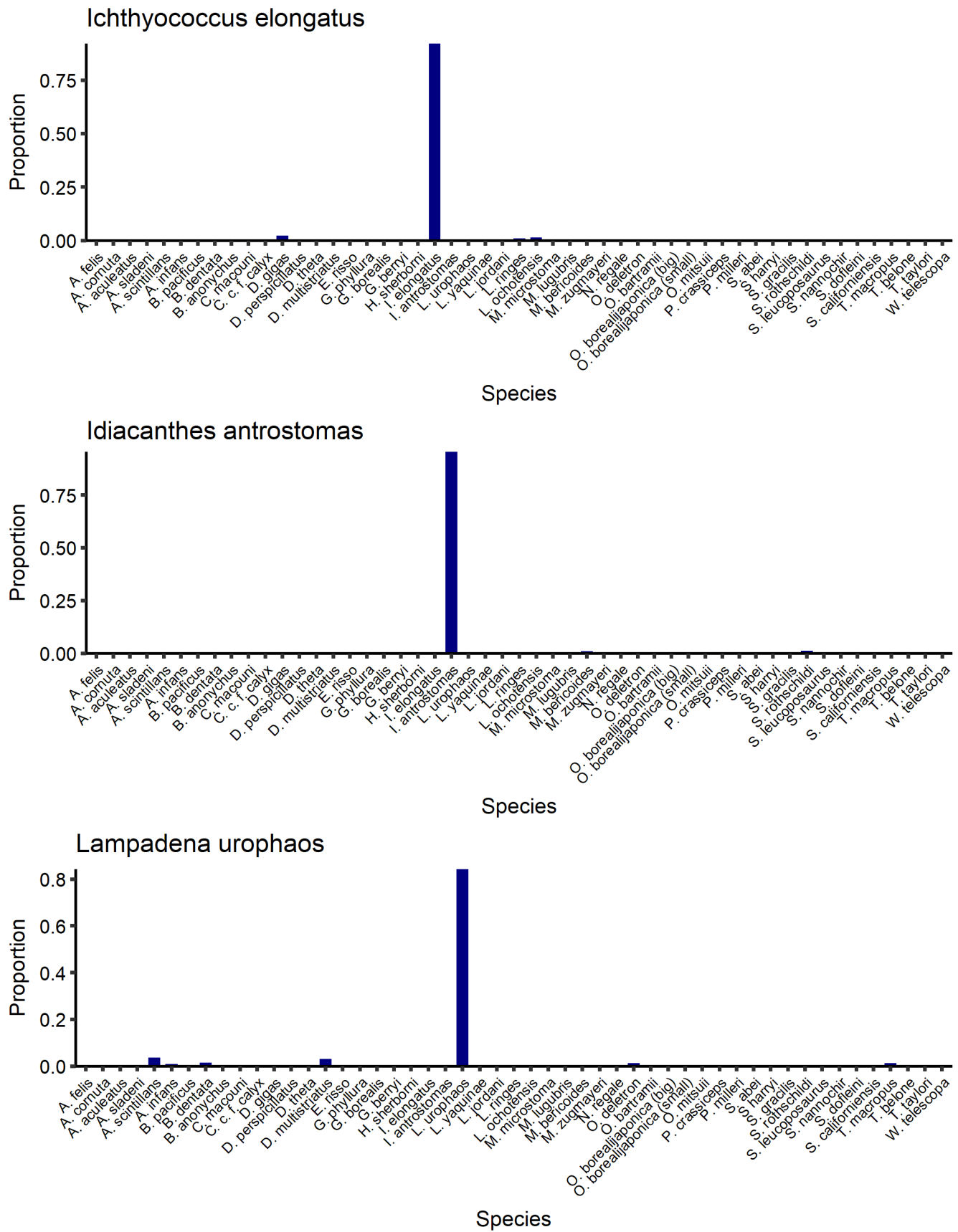


Figure S2 (continued). LOPO Analysis.



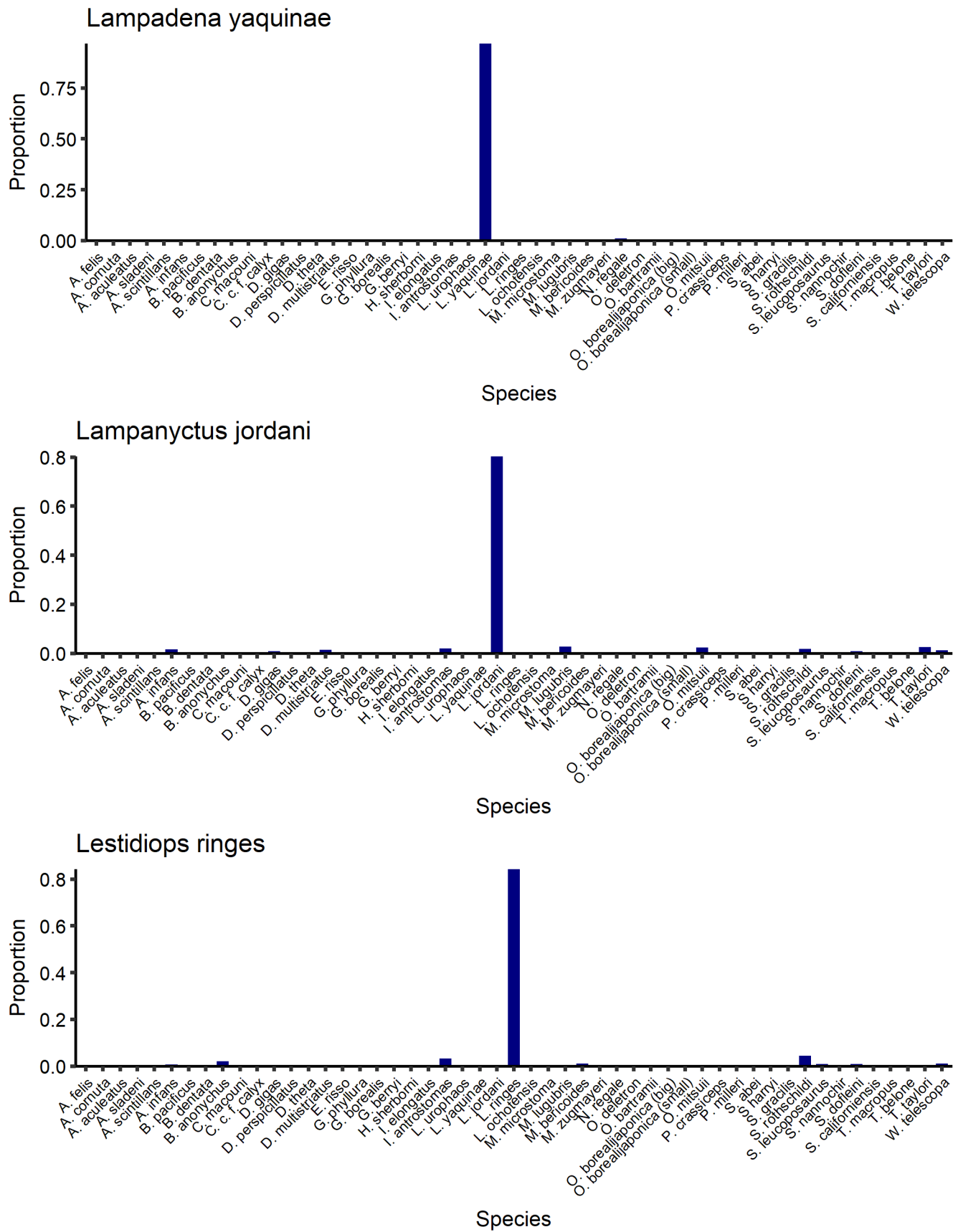


Figure S2 (continued). LOPO Analysis.



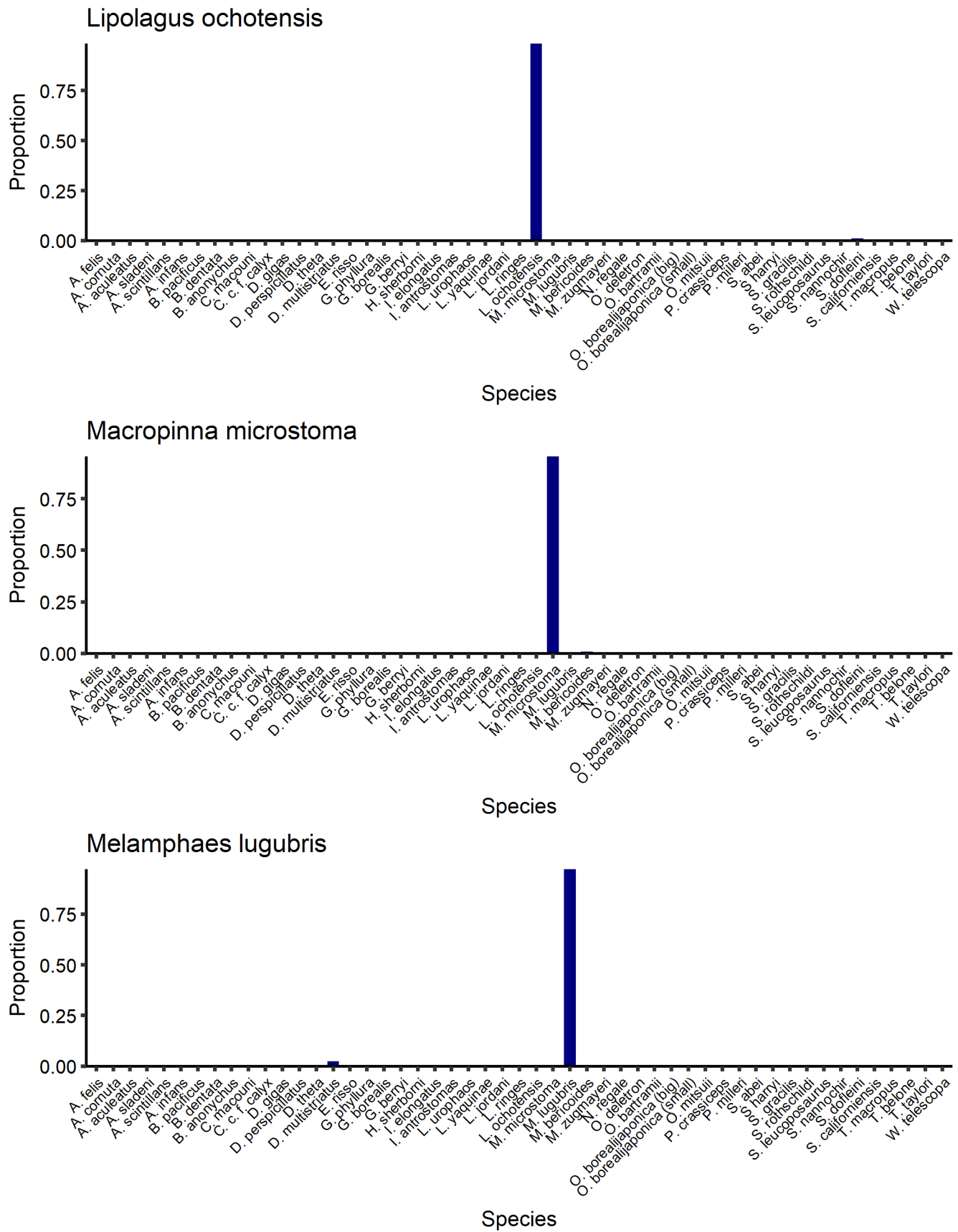


Figure S2 (continued). LOPO Analysis.

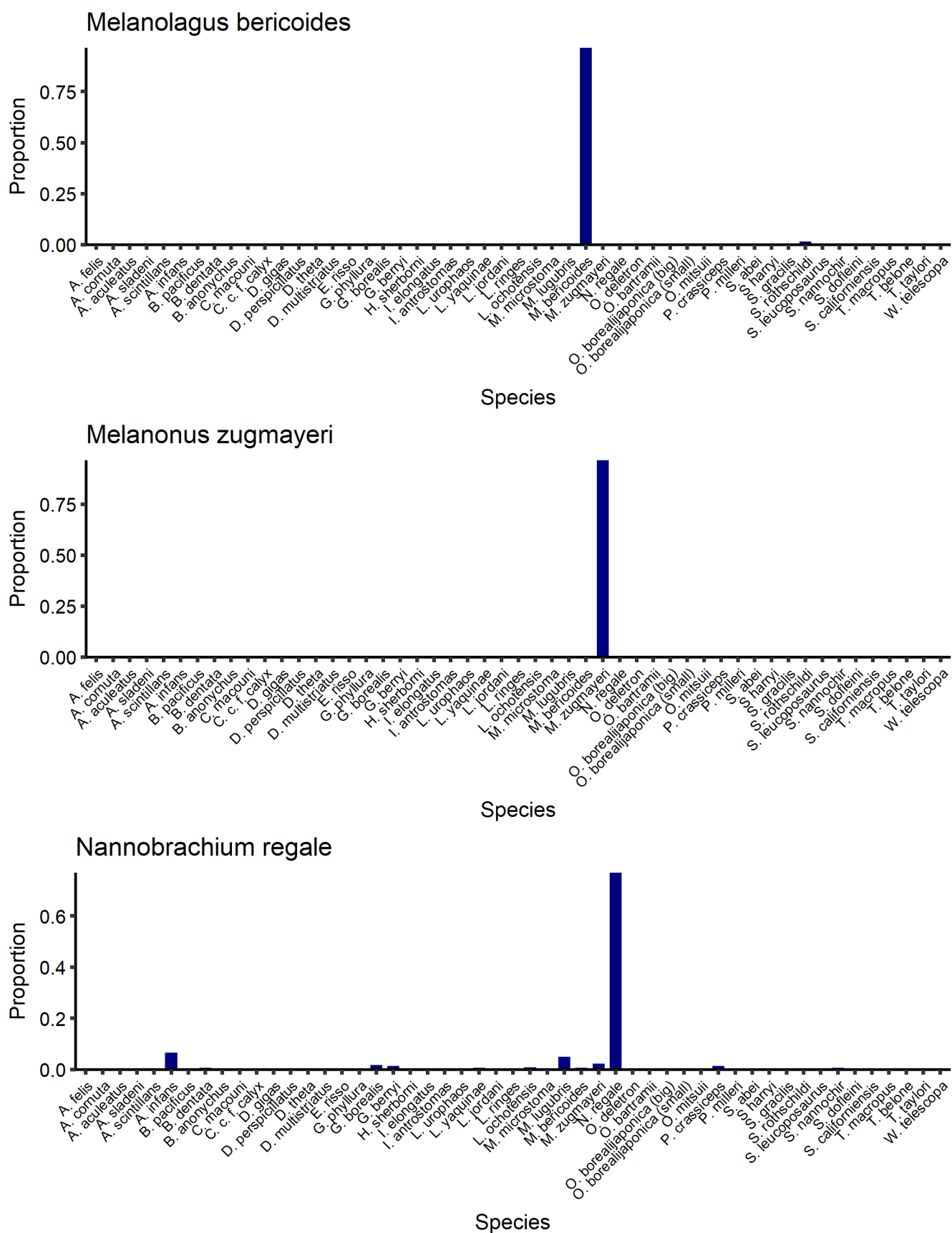


Figure S2 (continued). LOPO Analysis.

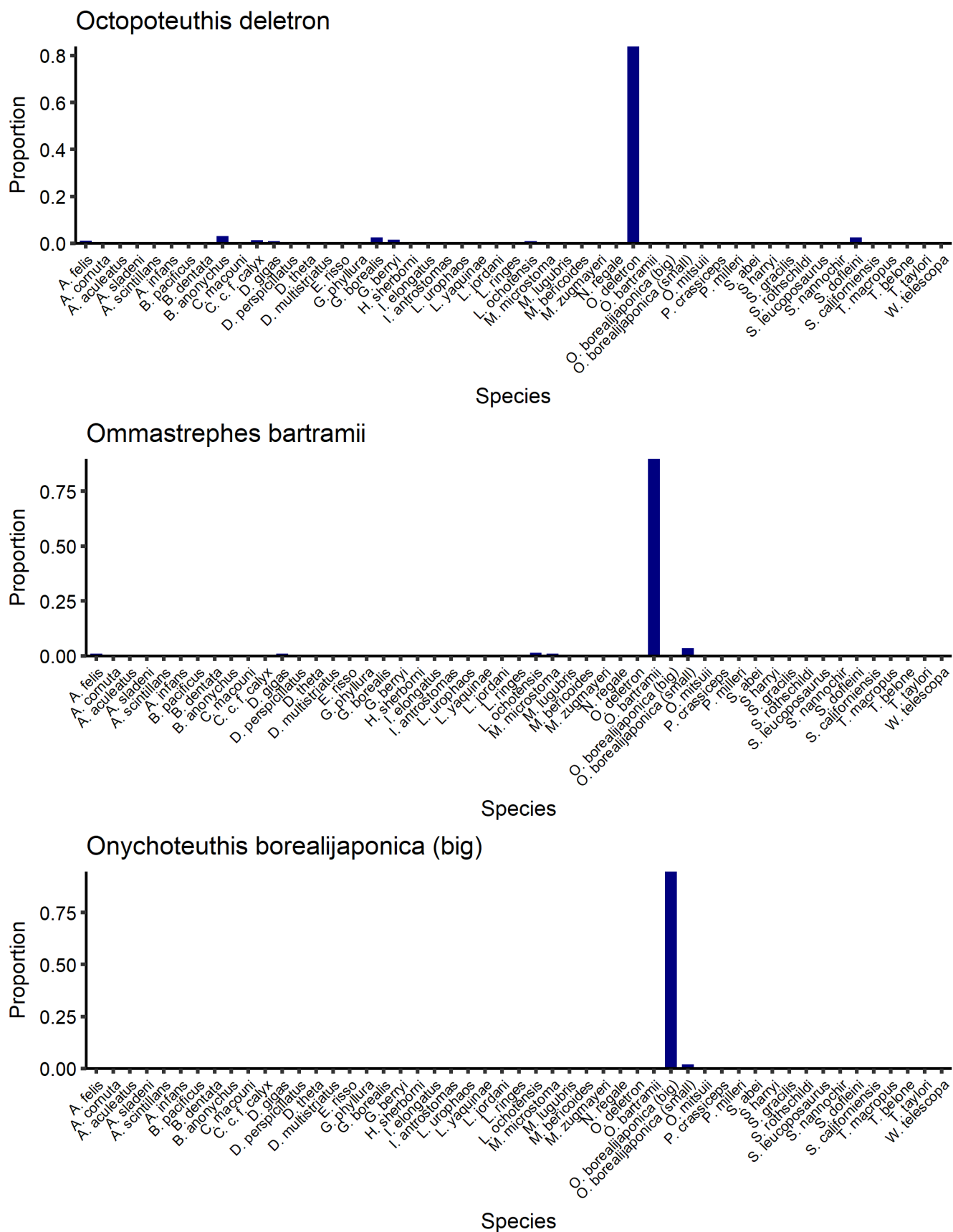


Figure S2 (continued). LOPO Analysis.

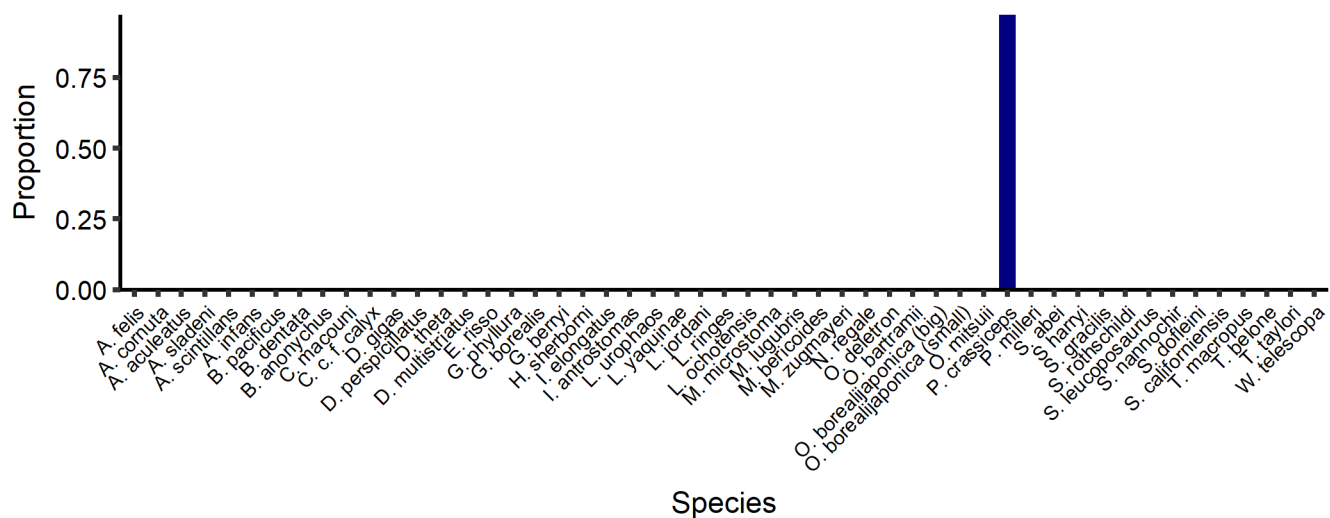


Figure S2 (continued). LOPO Analysis.

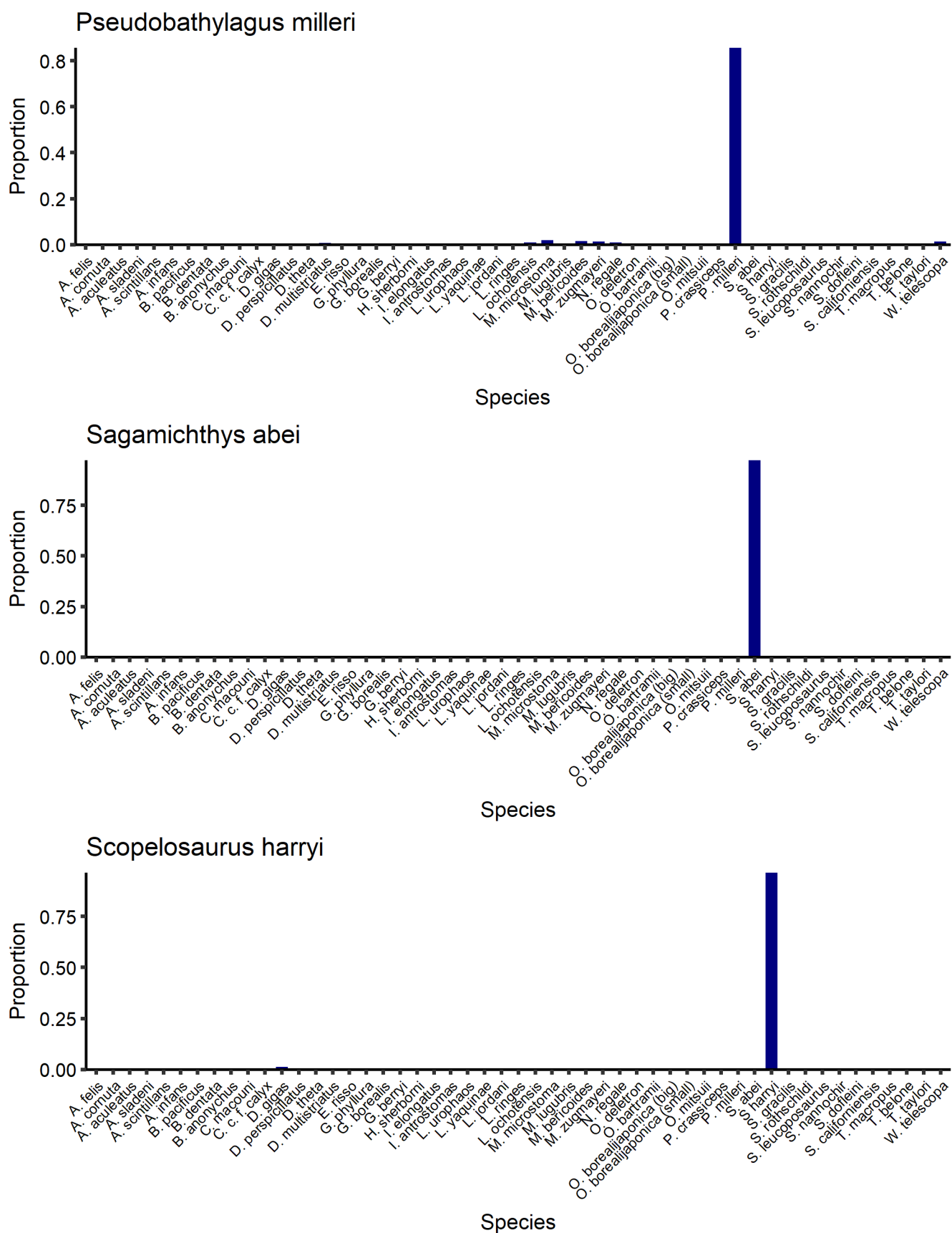


Figure S2 (continued). LOPO Analysis.

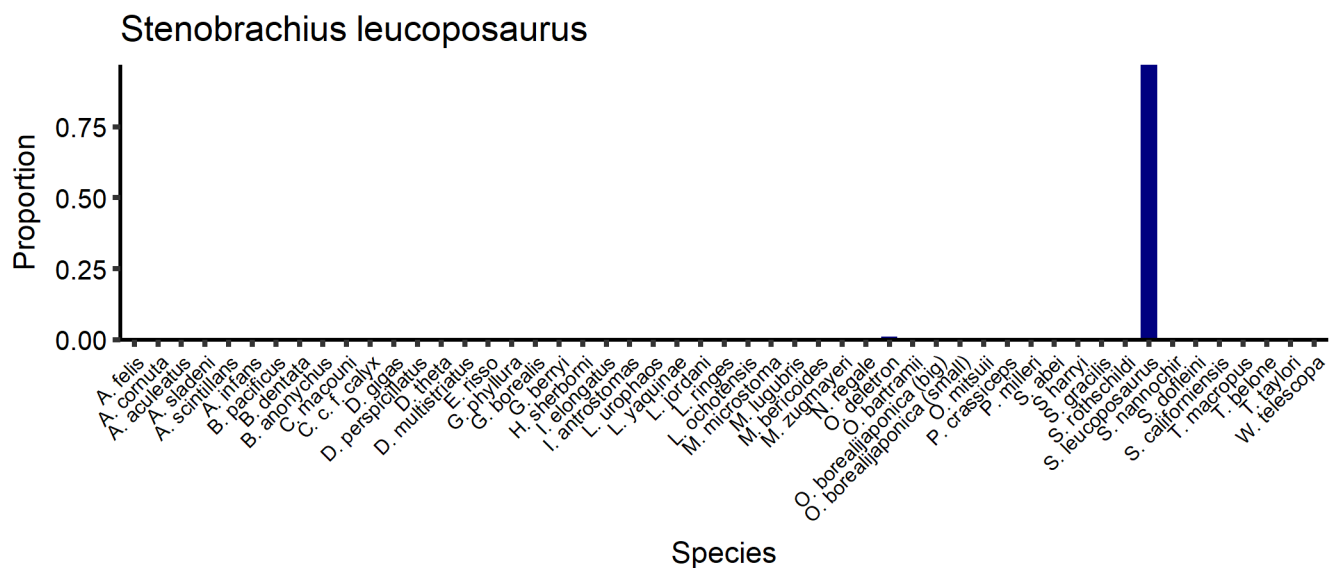
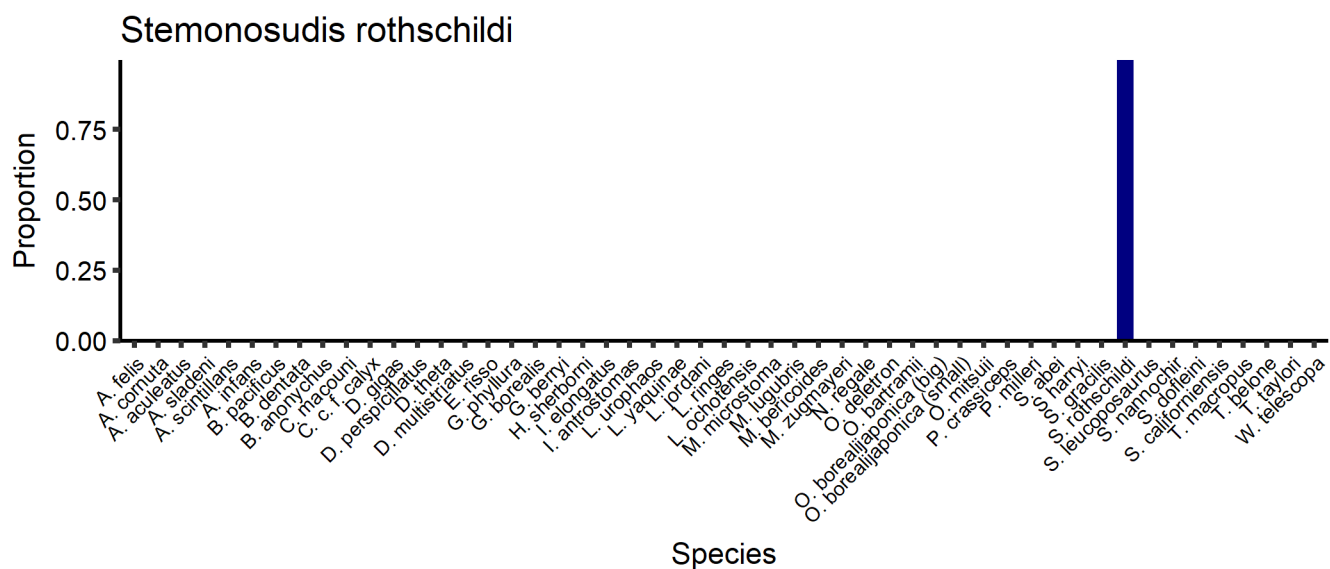
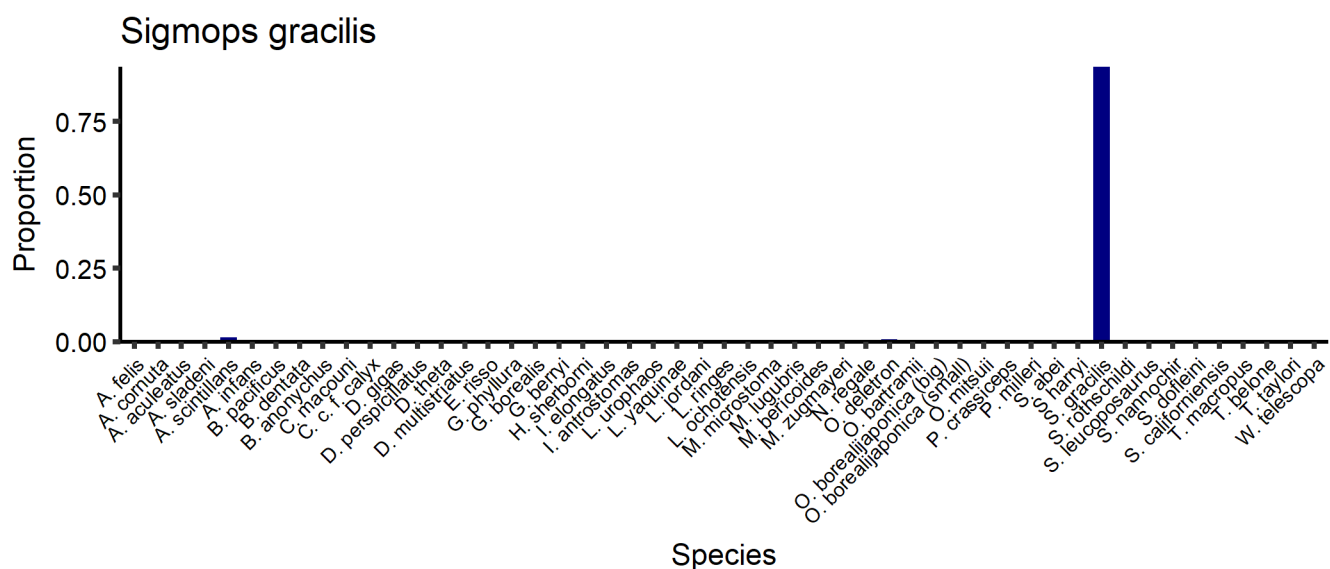


Figure S2 (continued). LOPO Analysis.

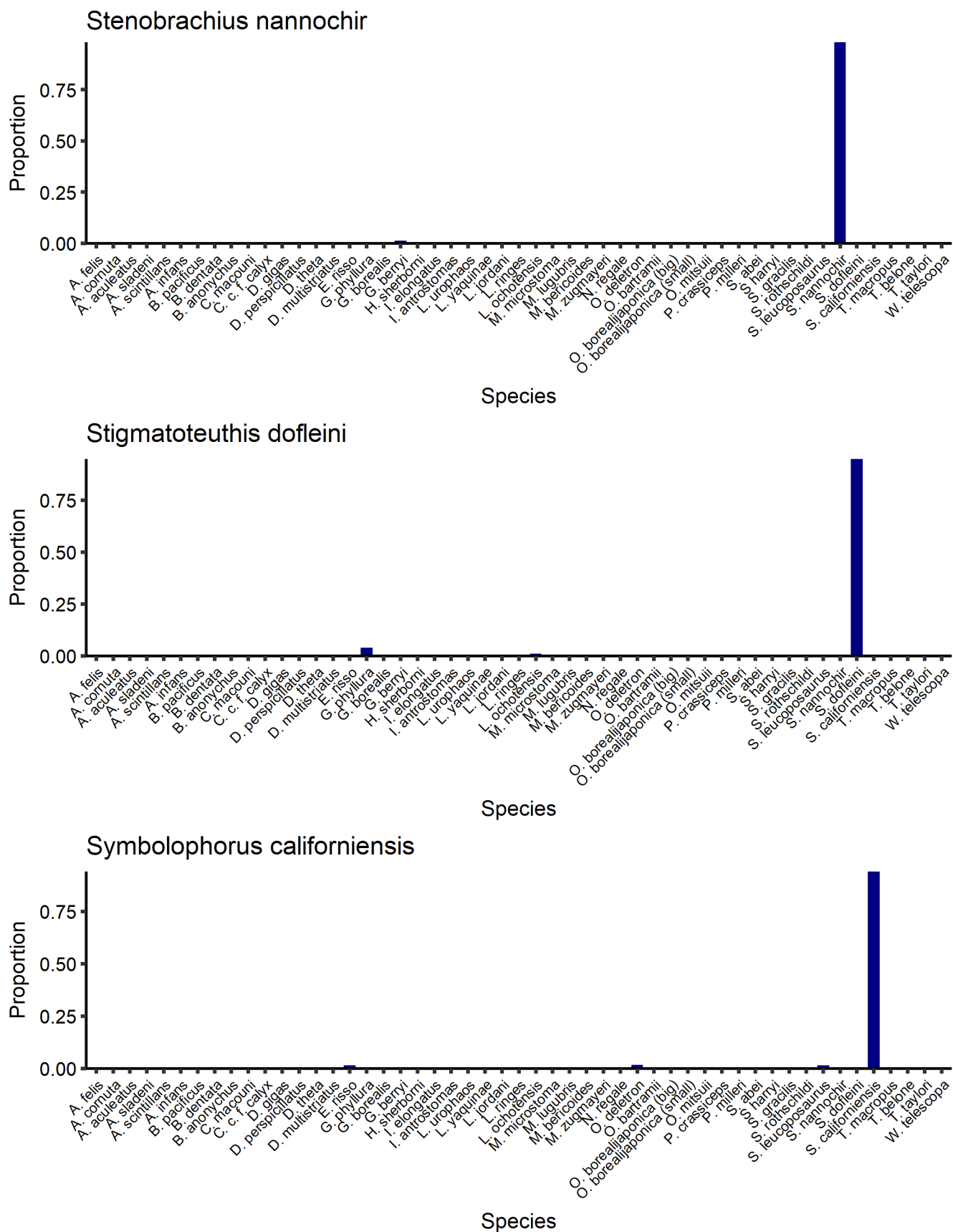


Figure S2 (continued). LOPO Analysis.



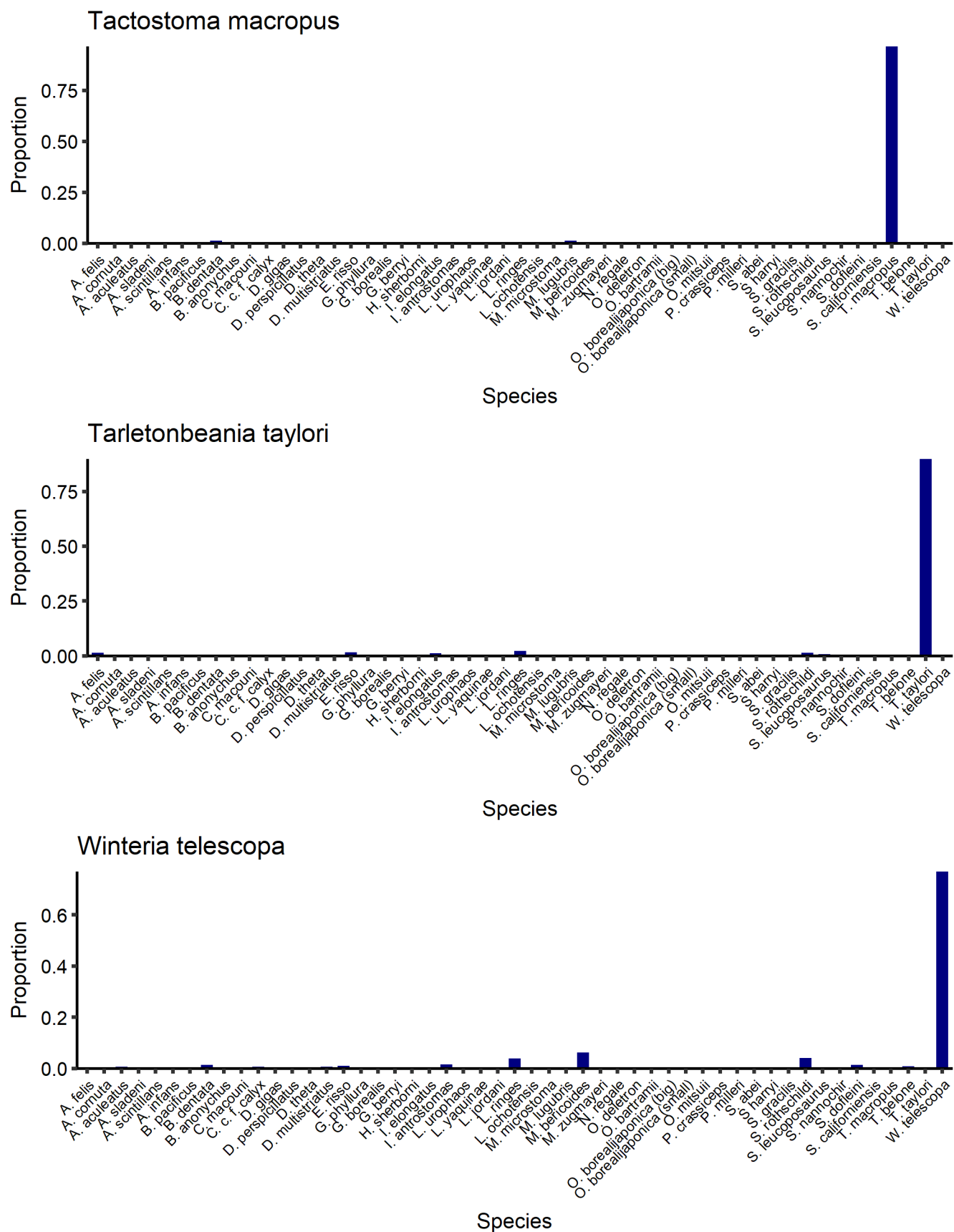


Figure S2 (continued). LOPO Analysis.