

FINDING THE MAGIC

Libraries and Data Management

#SCMLA18
#SCMLA2018

SHIRLEY ZHAO

MSLIS, MS (MATH)

Data Science Librarian
Eccles Health Sciences Library
The University of Utah



@zhao_shirley

shirley.zhao@utah.edu

shirl0207.wordpress.com

OUTLINE

PART I

Crash Course on Data Management

PART II

Inspiring Ideas for Libraries

PART III

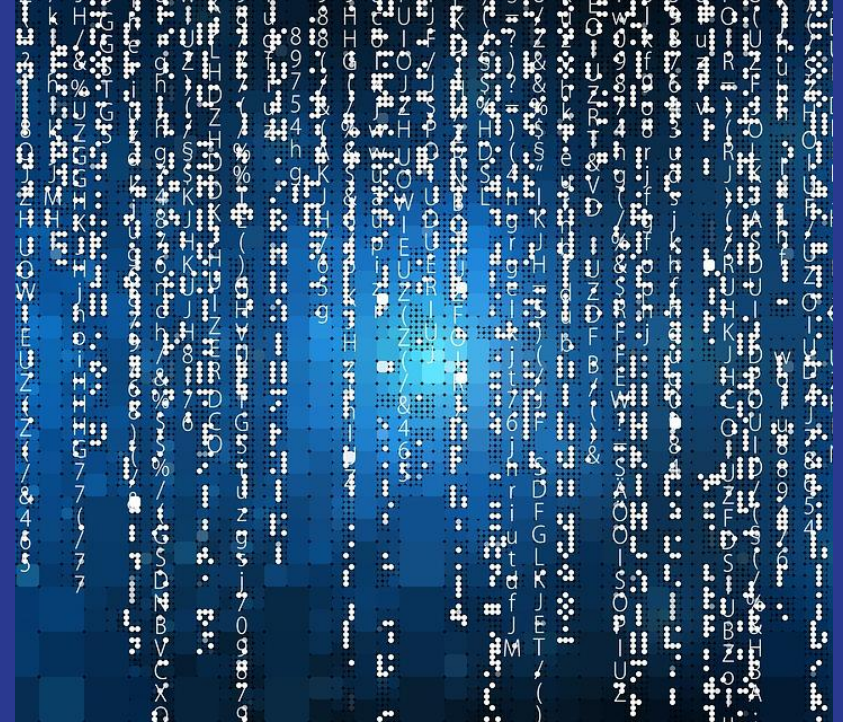
A Word on Big Data & Data Science

data management = DM

PART I

WHAT IS DATA?

Or what isn't?





FAIR DATA PRINCIPLES



WHAT IS DM?

(Research) Data Life Cycle



<https://www.dataone.org/data-life-cycle>

WHO DOES DM?

Do you?



WHERE DOES DM HAPPEN?

Think about the context



**WHEN DOES DM
HAPPEN?**



WHY DO DM?

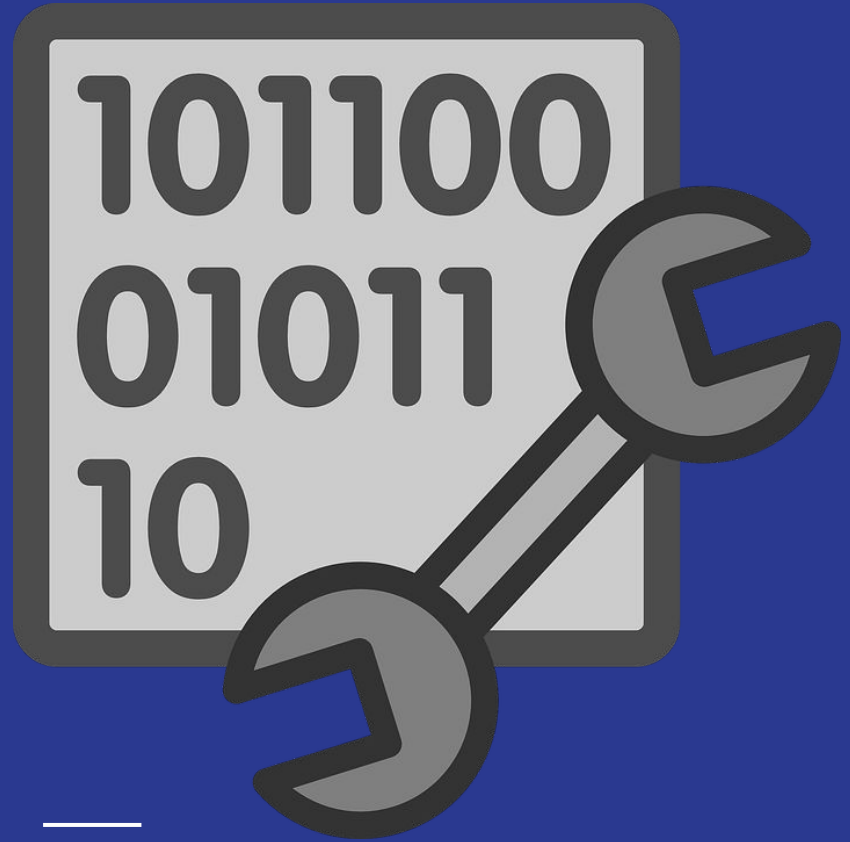


https://youtu.be/66oNv_DJuPc

WHERE CAN I LEARN DM?

NNLM RD3

<https://nnlm.gov/data>



PART II

HOW DO YOU GET STARTED AT YOUR LIBRARY?

Laying the groundwork for
success



SELF-REFLECTION

- What is your library's capacity?
- How can existing knowledge and skillsets within the staff be leveraged?
- What training do you need?



SWOT ANALYSIS



NEEDS ASSESSMENT

"Data Management Needs Assessment Phase I: Web-based Survey ...

[ir.uiowa.edu](#) > [University Libraries](#) > [Libraries Staff Publications](#) > 136 ▼

Objectives Several funding agencies including the National Institutes of Health (NIH) require or encourage developing **data management** plans for research. This study assesses the **data management needs** across campus. ... Methods A mixed-mode survey methodology involving web-based ...

[PDF]

Spring 2017 Research Data Management Needs Assessment Survey ...

<https://nml.gov/sites/default/files/pnr/.../PNR-RDM-needsassessment2017-508.pdf> ▼

Spring 2017 RDM **Needs Assessment** Survey Results ... assessments themselves, or helping others to create assessments or generally **manage** their **data**.

Assess Data Needs - Research Data Toolkit - LibGuides at University ...

<https://guides.lib.unc.edu/c.php?g=8535&p=43803>

Questions to **Assess** Your **Data Management Needs**. The following are a variety of questions to consider that will impact your **data management** plan.

Assessing the Data Management Needs of Academic Researchers

scholarworks.gsu.edu/cgi/viewcontent.cgi?article=1015&context=southeasternlac ▼

by J Doty - 2013

Primary reason for our **data needs assessment**. 3. Survey design and ... libraries added two new positions (**Data Management** Specialist, E-Science Librarian) in.

[PDF] DATA MANAGEMENT PLANNING: SELF-ASSESSMENT

https://scholcomm.columbia.edu/wp-content/uploads/.../DMPSelfAssessment_v01.pdf ▼

"**Data Management** Plan Self-Assessment Questionnaire." ... What related information **needs** to be preserved with the data (e.g., software, reports, research ...

A Survey to Understand Data Management Needs Across Diverse ...

<https://onlinelibrary.wiley.com/doi/pdf/10.1002/bul2.2015.1720420114>

by AH Mohr - 2015 - Cited by 3 - [Related articles](#)

research **data management** needs in light of new requirements and ... can broaden the reach of this kind of **needs assessment**. Survey Design Strategy.

INSTITUTIONAL RESOURCE SCAN

- Technology
 - Storage options and repositories
 - Software
- Offices & People
 - Office of sponsored projects
 - Research computing
 - Legal counsel
 - Other librarians
- Policies
 - Data management and ownership
 - Intellectual property
- Grants/Funding



WHAT ARE YOUR GOALS AND OBJECTIVES?



QUICK NOTE ON NETWORKING

And advocacy




WHAT ARE LIBRARIES DOING FOR DM?

Some ideas to get started



ONLINE GUIDES



Stanford | LIBRARIES

AboutLibrariesUsing the librariesCollectionsResearch supportAsk us

[Home](#) » [Research Support](#) » Data Management Services

Data Management Services

[Data Management Services](#) +

[Data management plans](#) +

[Share and preserve research data](#) +

[Data best practices](#) +

[Case studies](#) +

[Storage and backup](#) +

[Consulting, training, and other services](#)

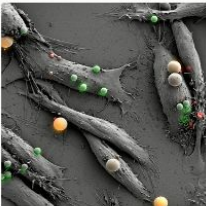
[FAQ](#) +

[Our latest newsletter](#) +

[Events](#) +

Data Management Services assists Stanford researchers with the organization, management, and curation of research data to enhance its preservation and access now and into the future. For information about other related services provided by Stanford Libraries, please see our [Data Services](#) site.


If you have any questions you can email us any time at ask-data-services@lists.stanford.edu.



A permanent home for your data

Preserve your research data in the [Stanford Digital Repository](#) and give yourself peace of mind, knowing your data are safe. The persistent URL you'll receive will ensure your data always have a home.

[> Find out more about sharing and preserving your data](#)



Data management plans

We let you know what's required, what to include, where to find the information you need, and how to get it done fast with the DMPTool.

[> Find out more about the Data Management Planning Tool](#)

DATA MANAGEMENT PLANS



Build your Data Management Plan



DATA CATALOG

The screenshot displays the NYU Health Sciences Library Data Catalog website. The header is purple with the NYU logo and 'Data Catalog' text. Navigation links include 'Home', 'About the Catalog', and 'Contact Us'. A search bar with a 'Go!' button is present. On the left, a 'Filter by' sidebar lists 'Subject Domain' categories with counts: Electronic Health Records (144), Chronic Disease (90), Delivery of Health Care (84), Risk Factors (81), Population Characteristics (59), Health Status (49), Quality of Health Care (45), Surgery (30), and Cancer (25). The main content area shows search results for 'AMA Physician Masterfile'. The results include a description of the database, subject terms, geographic coverage, timeframe, access rights, and local expert information.

NYU HEALTH SCIENCES LIBRARY Data Catalog

Home About the Catalog Contact Us

Search here to find large public and licensed datasets

Go!

Filter by

☐ NYU Datasets Only

Subject Domain

- Electronic Health Records 144
- Chronic Disease 90
- Delivery of Health Care 84
- Risk Factors 81
- Population Characteristics 59
- Health Status 49
- Quality of Health Care 45
- Surgery 30
- Cancer 25

Page 1 of 1

Results 1

Sort by: name ▼

AMA Physician Masterfile

Description The [AMA Physician Masterfile](#) includes education, training and professional certification information on virtually all Doctors of Medicine (MD) and Doctors of Osteopathic Medicine (DO) in the United States, Puerto Rico, Virgin Islands, and certain Pacific Islands. It includes current and historical data for more than 1.4 million physicians, residents, and medical students in the United States. This figure includes approximately 411,000 graduates of foreign medical schools who reside in the United States and who have met the educational and credentialing requirements necessary for recognition.

Subject Delivery of Health Care
Population Characteristics

Geographic Coverage National

Timeframe 1906 - Present

Access Rights Fee Required

Local Expert for NYU Heather Gold

<https://datacatalog.med.nyu.edu/>

WORKSHOPS

shirl0207 / **reproducible_science**
forked from UUDeCART/reproducible_science

Watch 3

★ Star 4

Fork 4

Code

Pull requests 0

Projects 0

Insights

No description, website, or topics provided.

35 commits

1 branch

0 releases

3 contributors

Branch: master ▾

New pull request

Find file

Clone or download ▾

This branch is even with UUDeCART:master.

Pull request Compare



shirl0207 Merge pull request #2 from shirl0207/master ...

Latest commit 9c88535 on Jul 21, 2017

reprozip-trace	ADDED NOTES ON REPROZIP. ADDED REPROZIP PACKAGE	a year ago
1-TheBigPicture.ipynb	July 20 final edits	a year ago
2-FileManagement.ipynb	July 20 final edits	a year ago
3-DataManagement.ipynb	July 20 final edits	a year ago
4_1-BuildYourToolkit.ipynb	July 20 final edits	a year ago
4_2-BuildYourToolkit.ipynb	July 20 final edits	a year ago
4_2-BuildYourToolkit.md	added a few more details on docker-compose, removing containers progr...	a year ago
5-ResearchDissemination.ipynb	July 20 final edits	a year ago
6-Synthesis.ipynb	July 20 final edits	a year ago

EVENTS

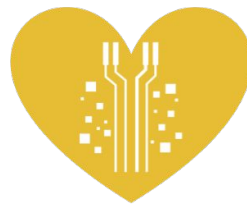
 Open Access Week 2018

Designing Equitable Foundations
for Open Knowledge



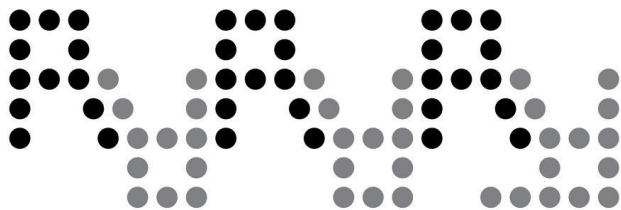
October 22 - 28

SAVE THE DATE



LOVE DATA WEEK 2018

February 12 - 16
lovedataweek.org



RESEARCH **REPRODUCIBILITY**

#MakeResearchTrue

#UTAHRR **18**

DATA REPOSITORY

re3data.org
REGISTRY OF RESEARCH DATA REPOSITORIES



<https://hive.utah.edu/>

REDCAP SUPPORT



A new hat for librarians: providing REDCap support to establish the library as a central data hub

<https://www.ncbi.nlm.nih.gov/pmc/articles/PMC5764577/>

ELECTRONIC LAB NOTEBOOK SUPPORT



PART III

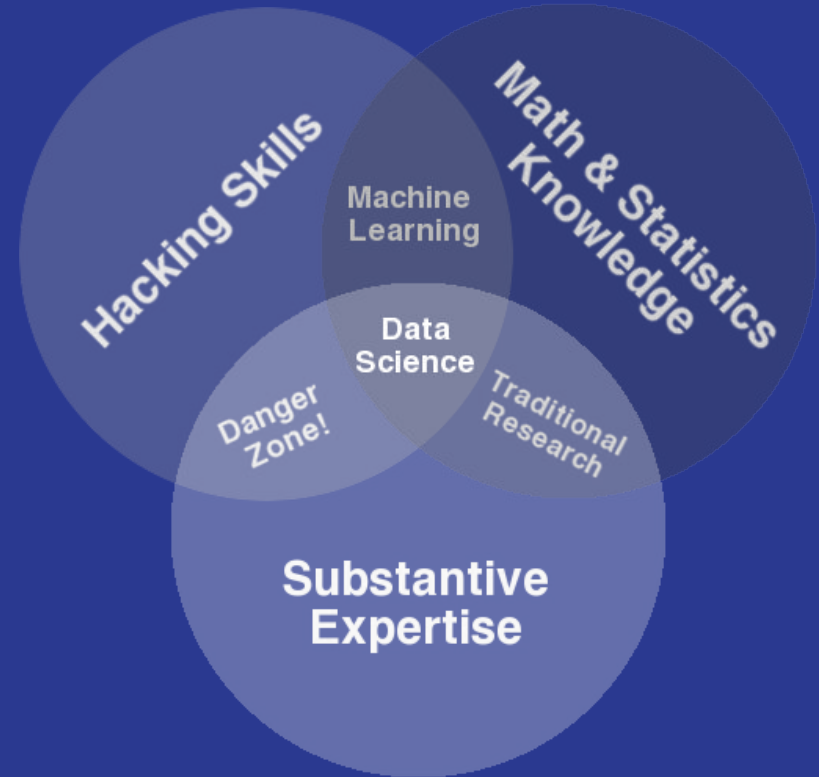
WHAT IS BIG DATA?

And can you manage it the same way as “little data”?



WHAT IS DATA SCIENCE?

It's not data management.



The background is a solid pink color. In the top right corner, there is a decorative pattern of overlapping squares and triangles in various shades of pink and magenta, creating a geometric, stepped effect.

QUESTIONS?

THANKS FOR LISTENING!

Shirley Zhao, MSLIS, MS

Data Science Librarian @ University of Utah

RDM Project Lead @ NNLM Training Office

@zhao_shirley

shirley.zhao@utah.edu

<http://shirl0207.wordpress.com>

FIND YOUR MAGIC

