

Supplemental Figure 1. *Immunohistochemistry control reactions*

Human liver FFPE sections were stained with MG1-45 mouse IgG isotype control antibody and anti-CEACAM1 monoclonal antibody. Scale bar: 50 μ m.

Supplemental Figure 2. *CEACAM1 localization in HepG2 cells*

HepG2 cells were stained with anti-CEACAM1 (green), phalloidin (red), and DAPI (blue). Scale bar: 5 μ m.

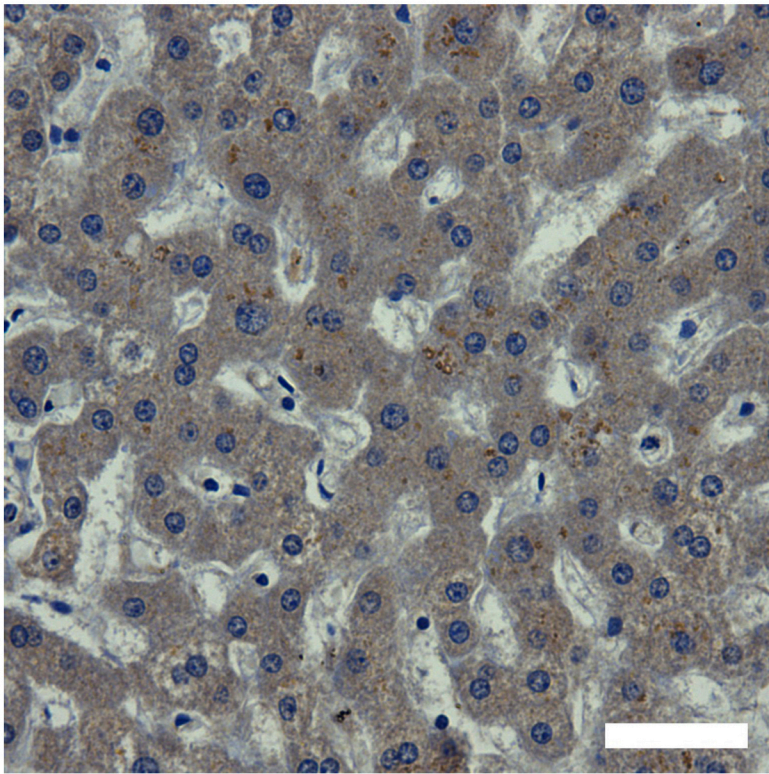
Supplemental Figure 3. *Effect of LCA on CEACAM1 expression in HepG2 cells*

CEACAM1 protein expression in HepG2 cells treated with 0.15% DMSO or 150 μ M LCA for 24 h was evaluated in duplicate by western blotting. GAPDH was used as an internal control.

Supplemental Figure 4. *CYP3A4 mRNA expression in FXR-knockdown HepG2 cells*

CYP3A4 mRNA expression was evaluated by real-time PCR. Data were normalized against *GAPDH* mRNA expression, and the mean \pm SD of triplicate assays was plotted. *Statistically significant difference ($P < 0.01$).

MG1-45



anti-CEACAM1

