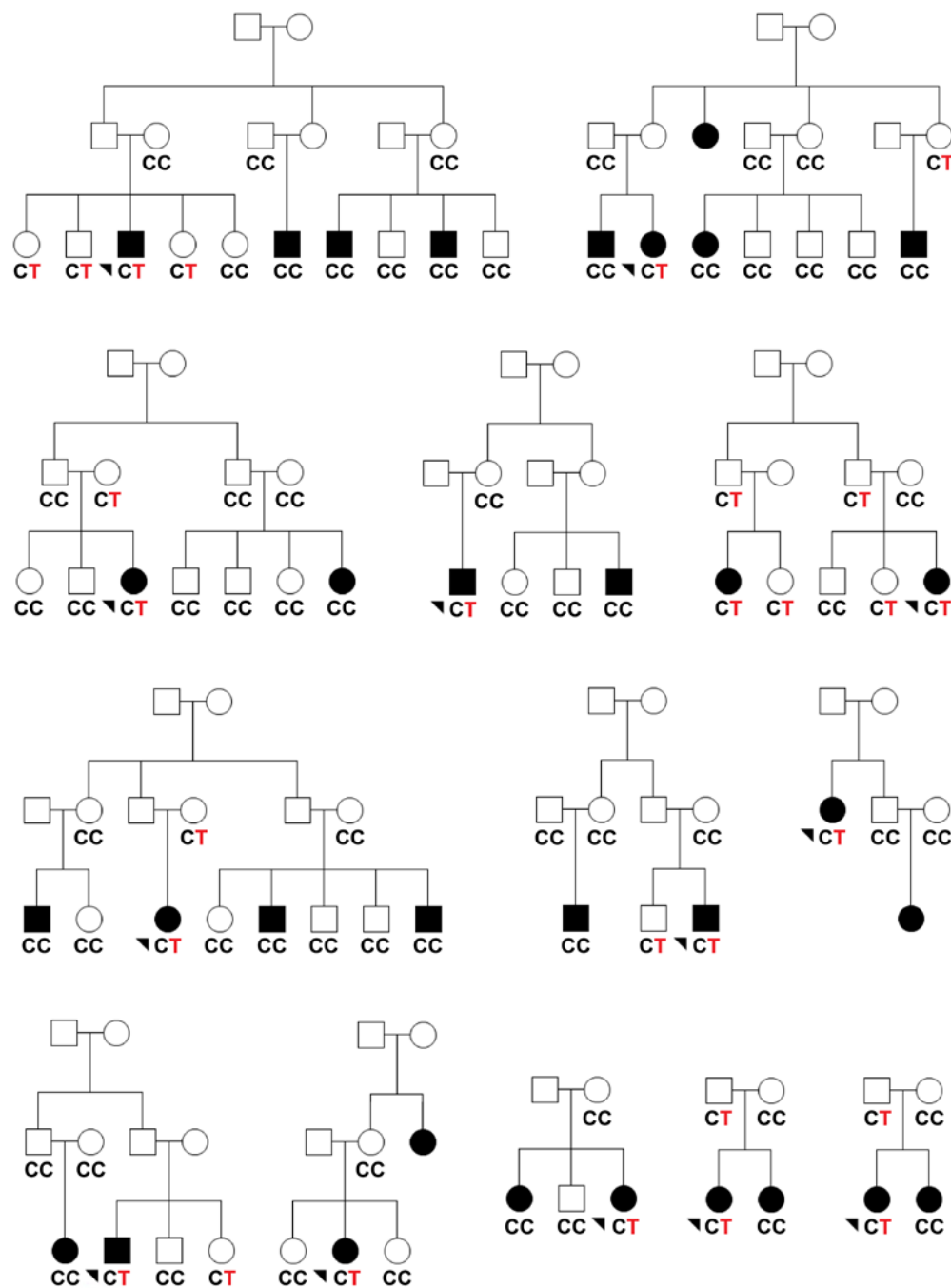


Supplemental Figure 1 - Pedigrees identified with FKBP6 p.R183C (rs147213094). Males are represented by squares and females by circles; black filled symbol indicating individuals diagnosed with MS. Heterozygote mutation carriers (CT) and wild-type (CC) genotypes are provided.



Supplemental Figure 2 - Segregation and conservation analysis for rare FKBP6 variants identified in MS patients.

