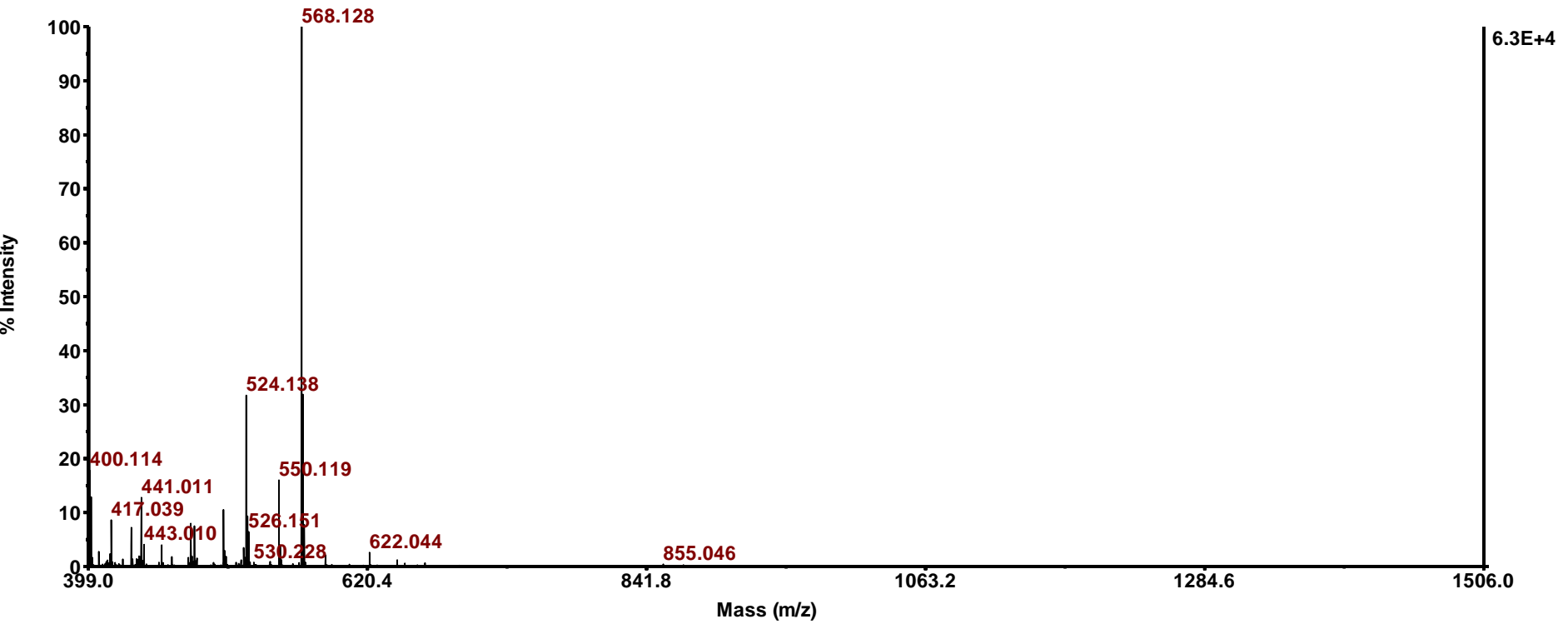
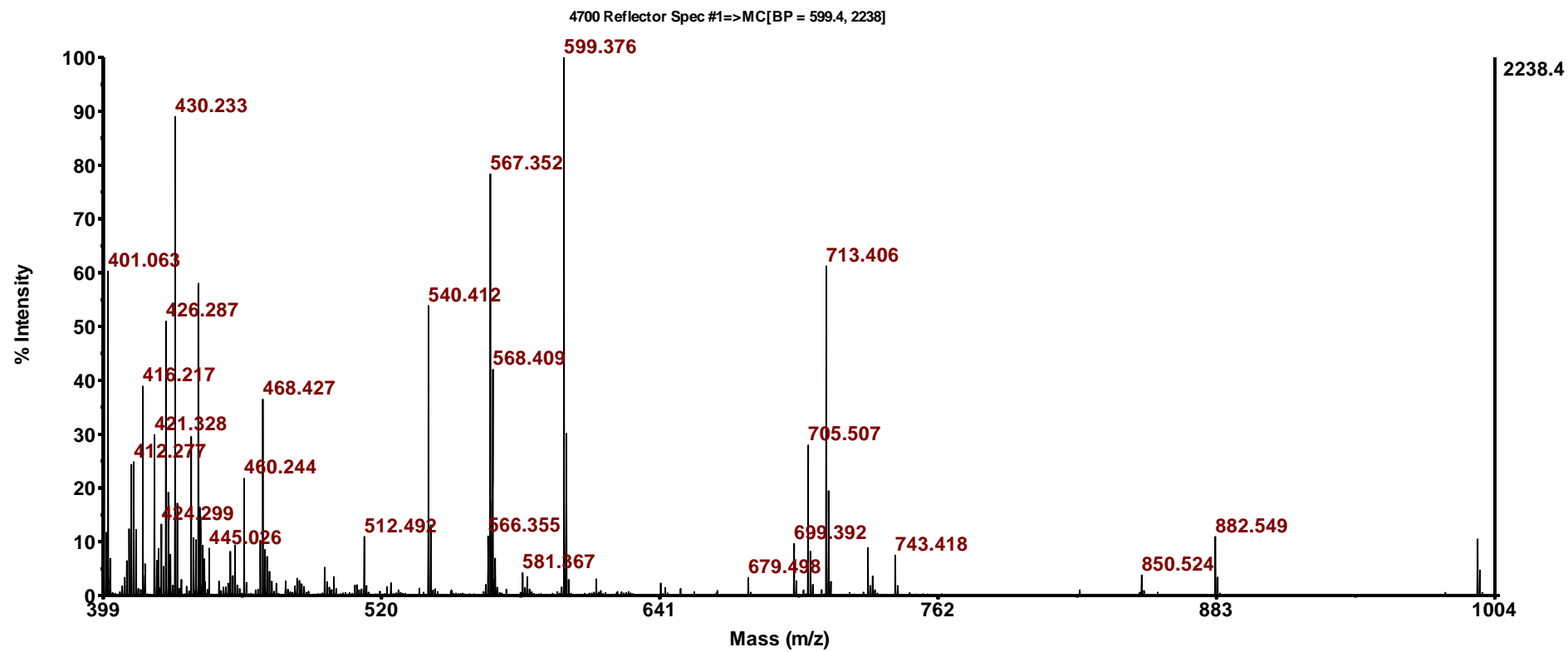


Supplement 4: CHCA Blank via MALDI-ToF MS

4700 Reflector Spec #1=>MC[BP = 568.1, 62596]

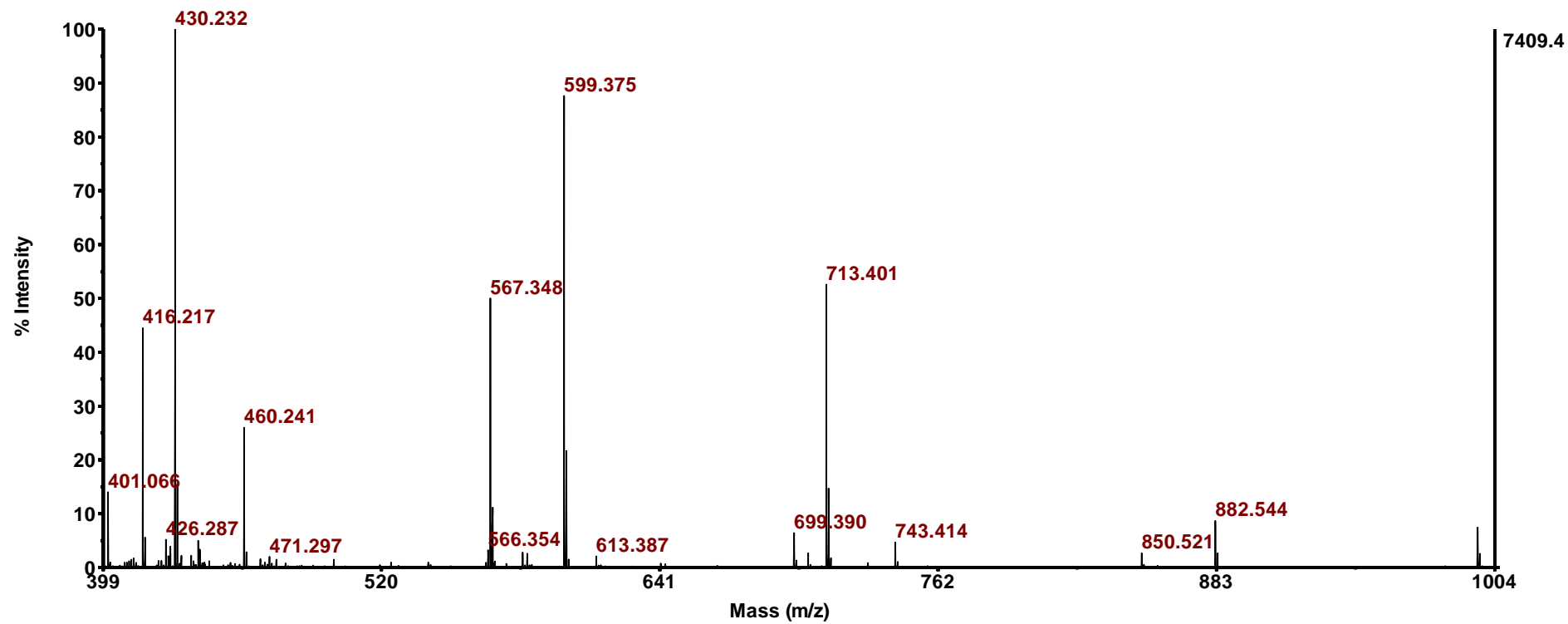


CHCA Blank



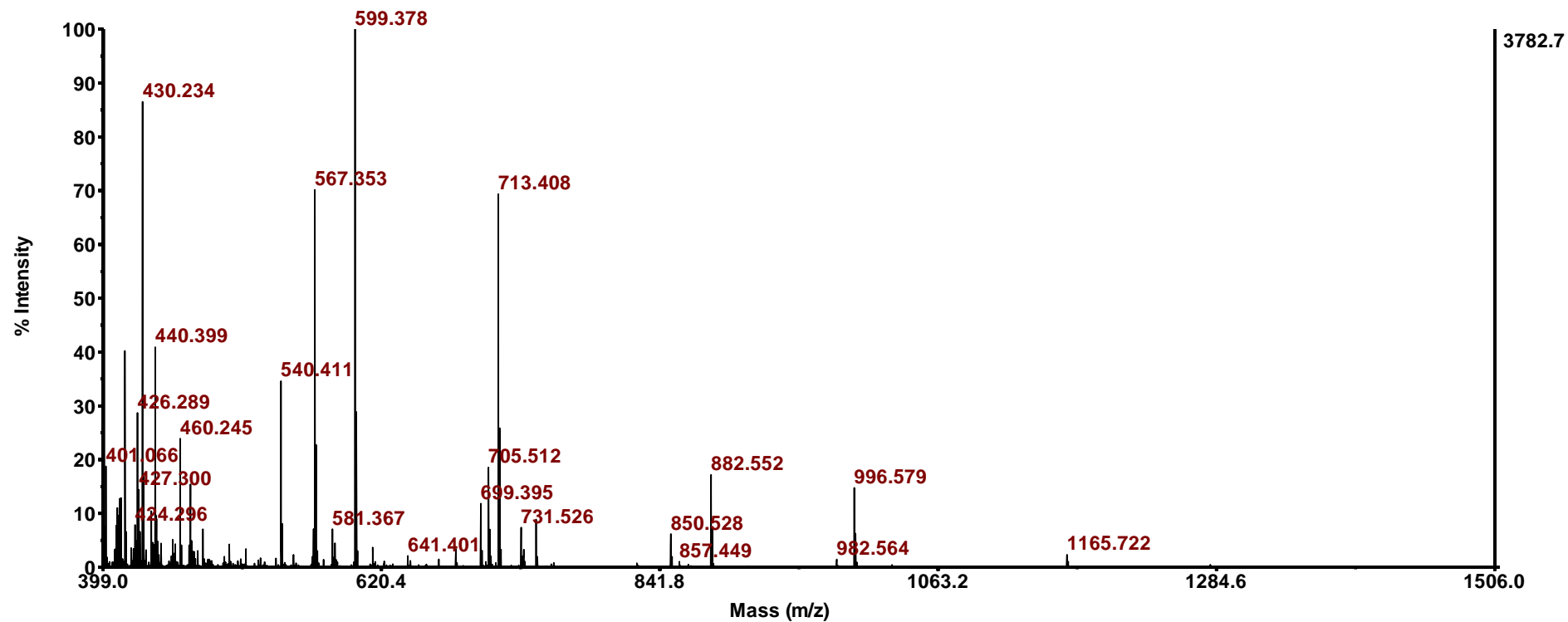
Sample 6-9

4700 Reflector Spec #1=>MC[BP = 430.2, 7409]



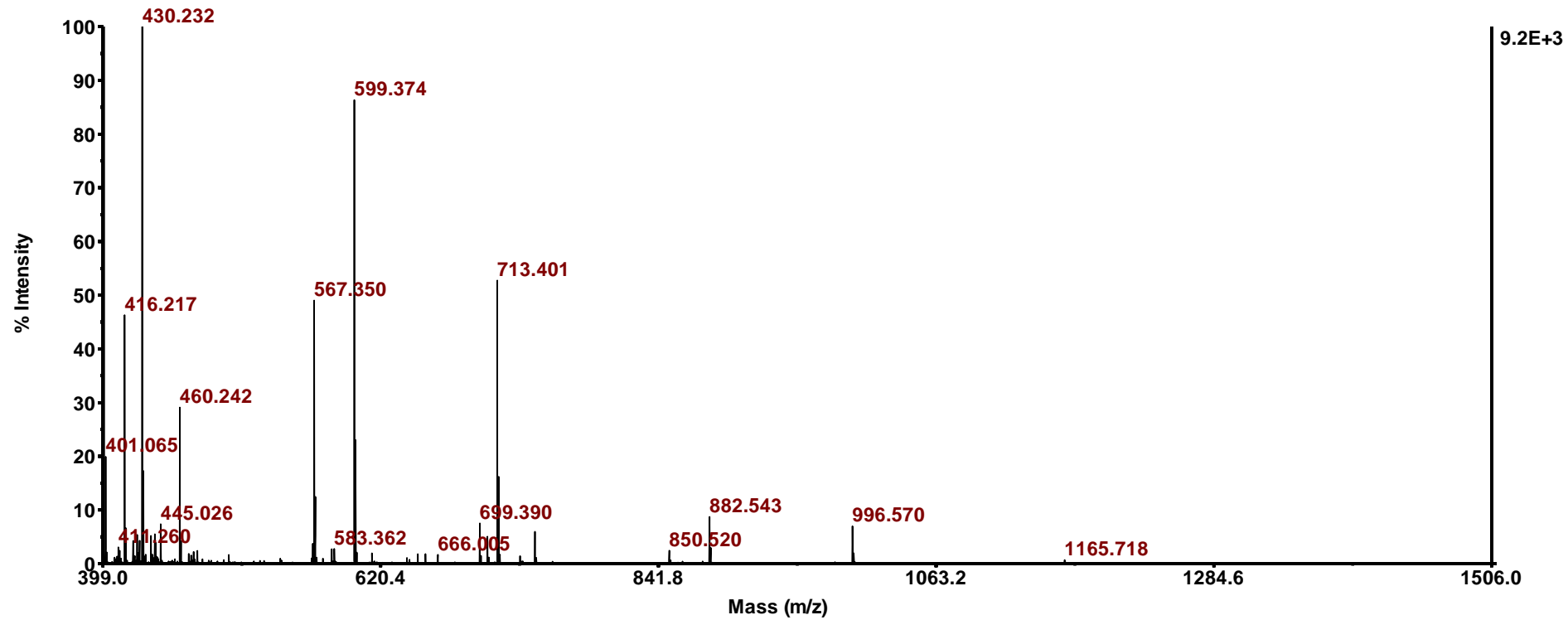
Sample 6-9

4700 Reflector Spec #1=>MC[BP = 599.4, 3783]



Sample 6-9

4700 Reflector Spec #1=>MC[BP = 430.2, 9162]



Sample 6-9