

Figure S1. EIC chromatograms of jojoba wax

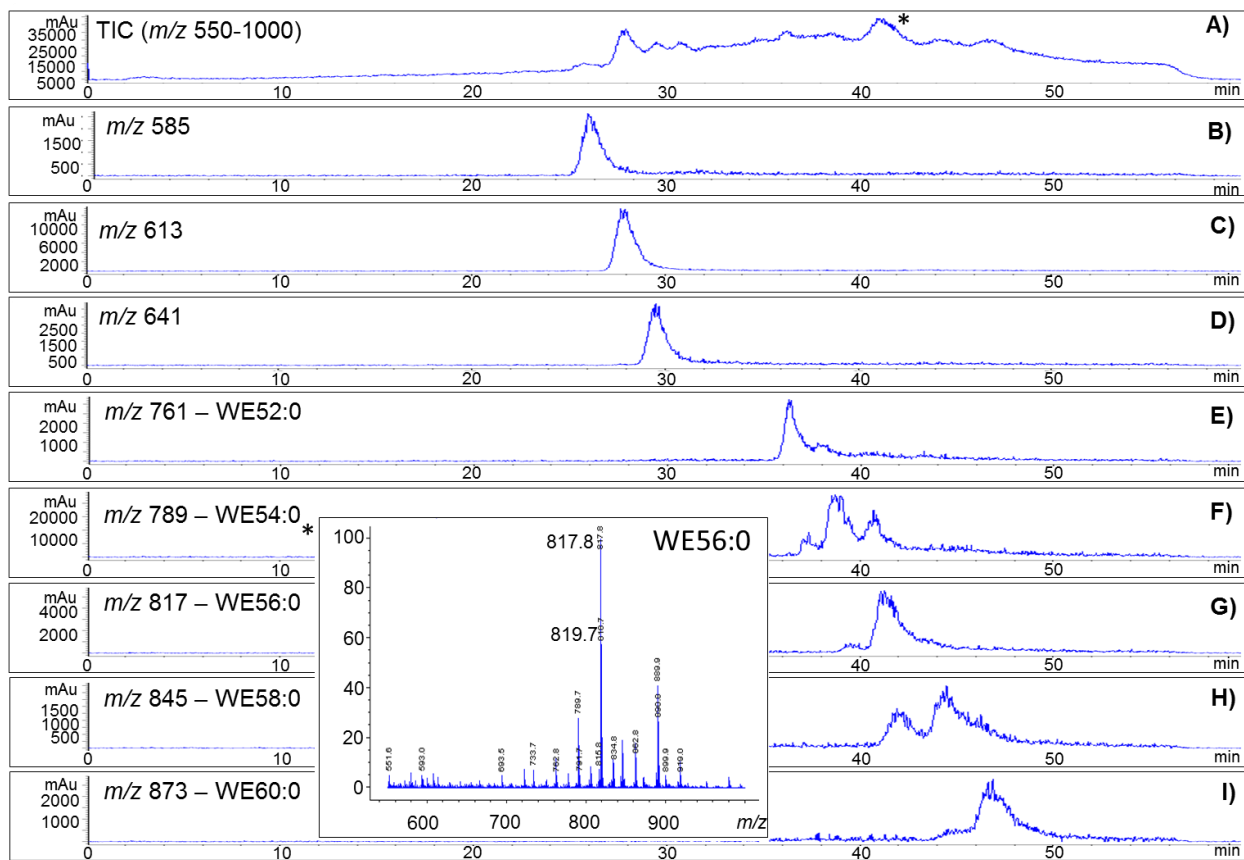


Figure S2. EIC chromatograms of carnauba wax

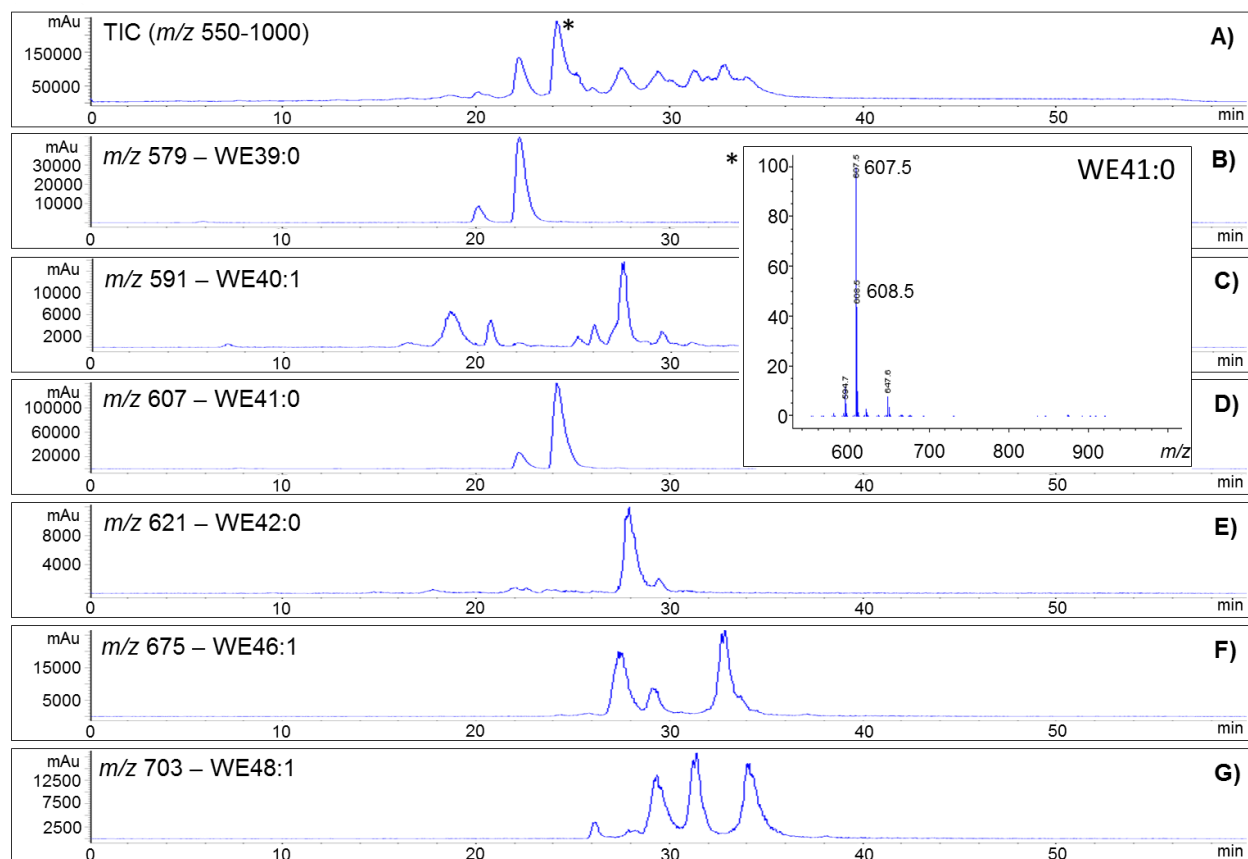


Figure S3. EIC chromatograms of beeswax

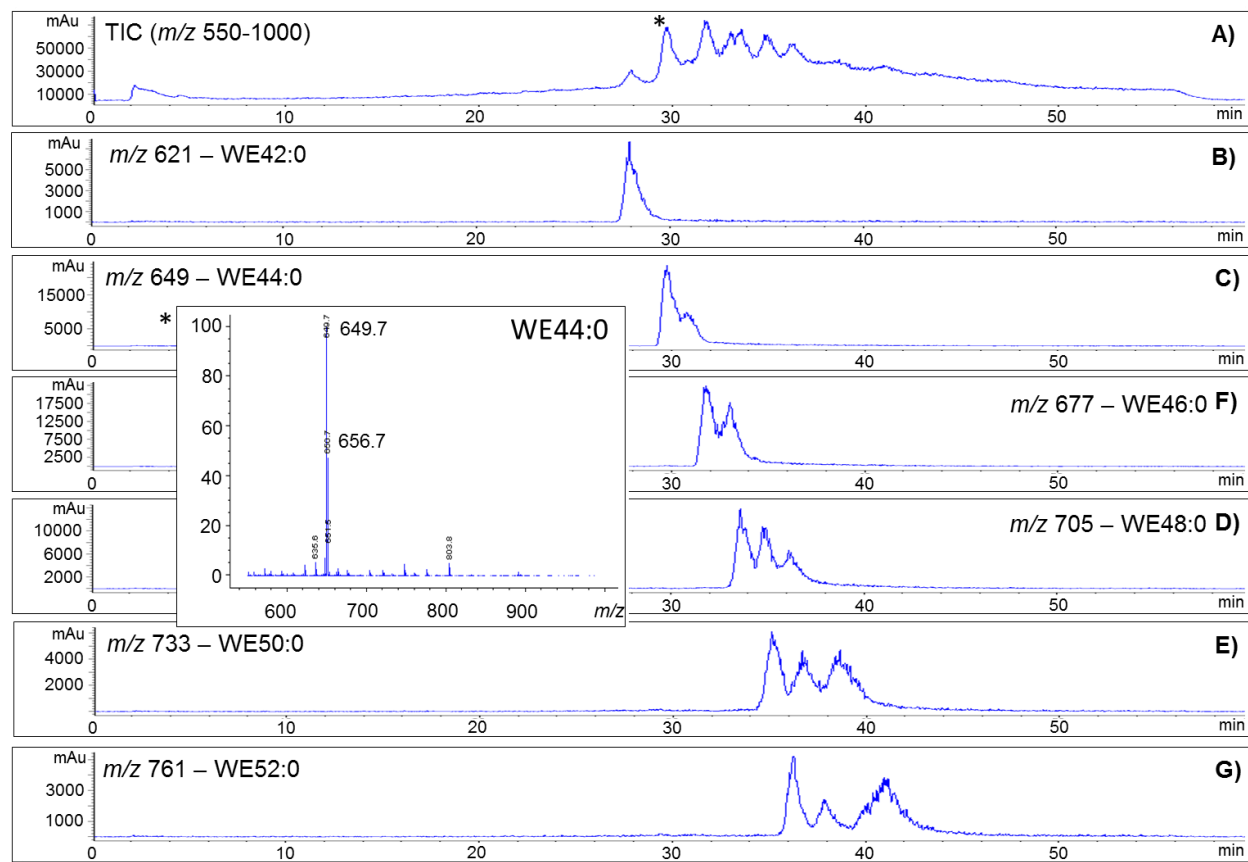


Figure S4. EIC chromatograms of rice bran wax

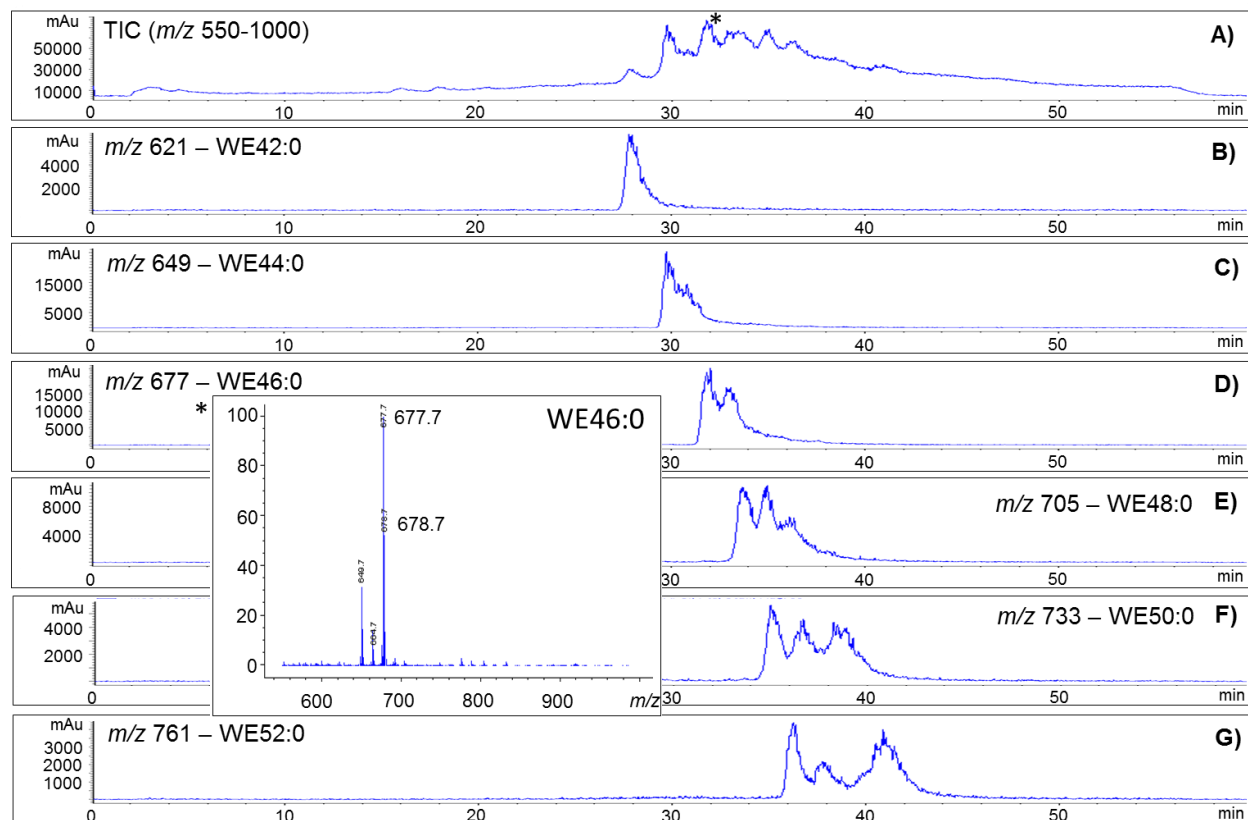


Figure S5. EIC chromatograms of sunflower wax

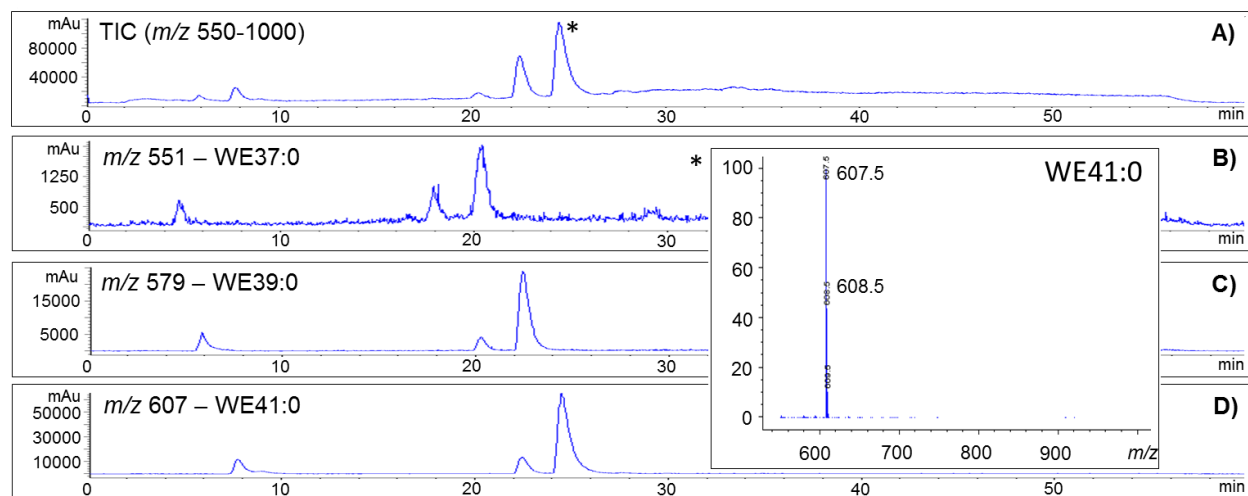


Figure S6. EIC chromatograms of candelilla wax

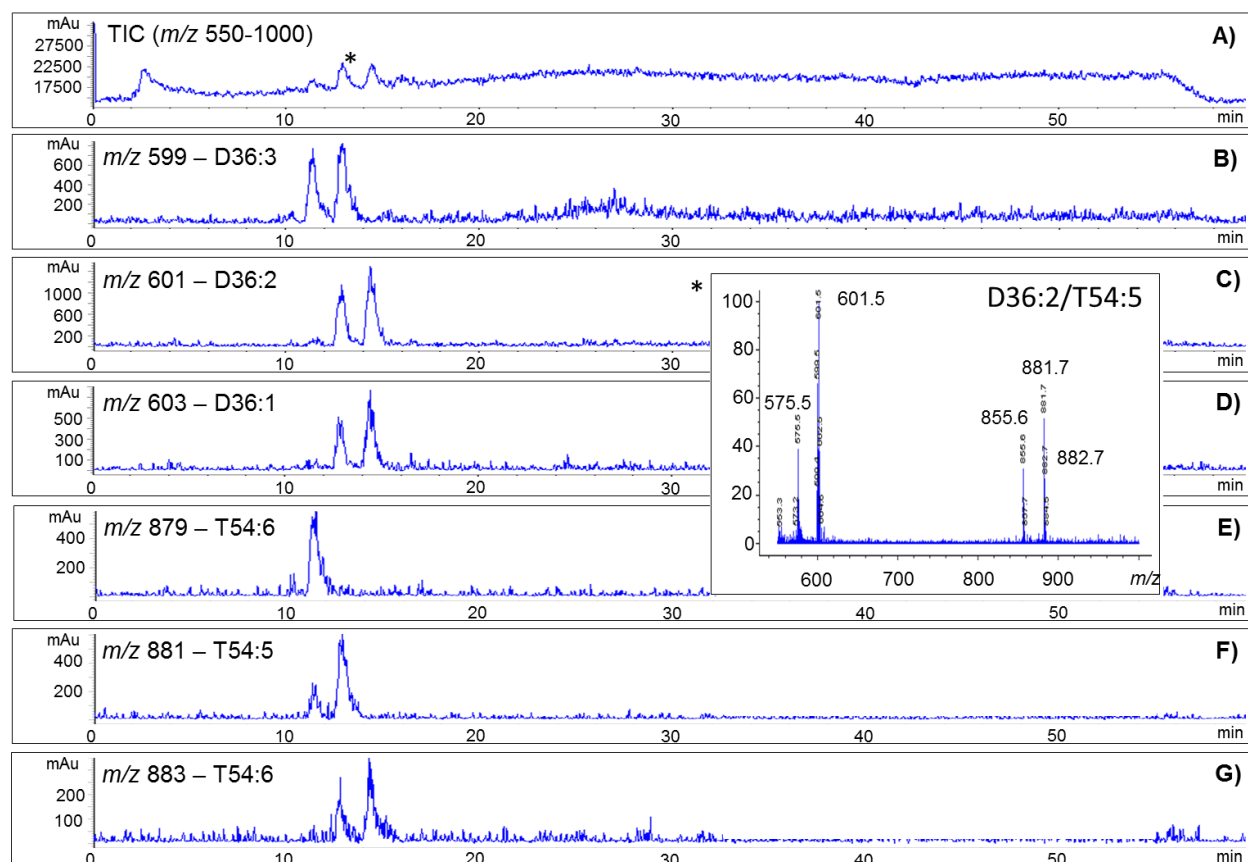


Figure S7. EIC chromatograms of paraffin wax