

SUPPLEMENTARY DATA

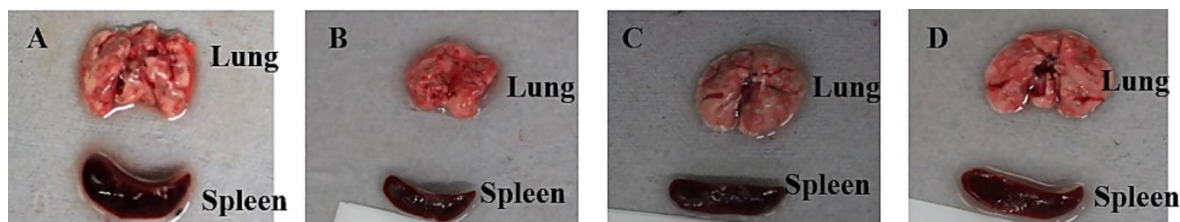


Figure S1. Images of lungs and spleen from animals after completion of treatment. A: Control untreated animals; B: Inhalation LDPI (100 µg LE); C: Inhalation LDPI (60 µg LE); D: Standard drug treatment group.

As seen in Figure S1, the number of tubercles is significantly lower in lungs of animals of standard drug treatment group and LDPI treated group as compared to control untreated group animals. The lung grading with respect to presence of tubercles was in the order of: Control untreated group > Inhalation LDPI (60 µg LE) > Inhalation LDPI (100 µg LE) > Standard treatment group. Splenomegaly was observed in animals of control untreated group which was not the case with animals of standard and LDPI treated group.