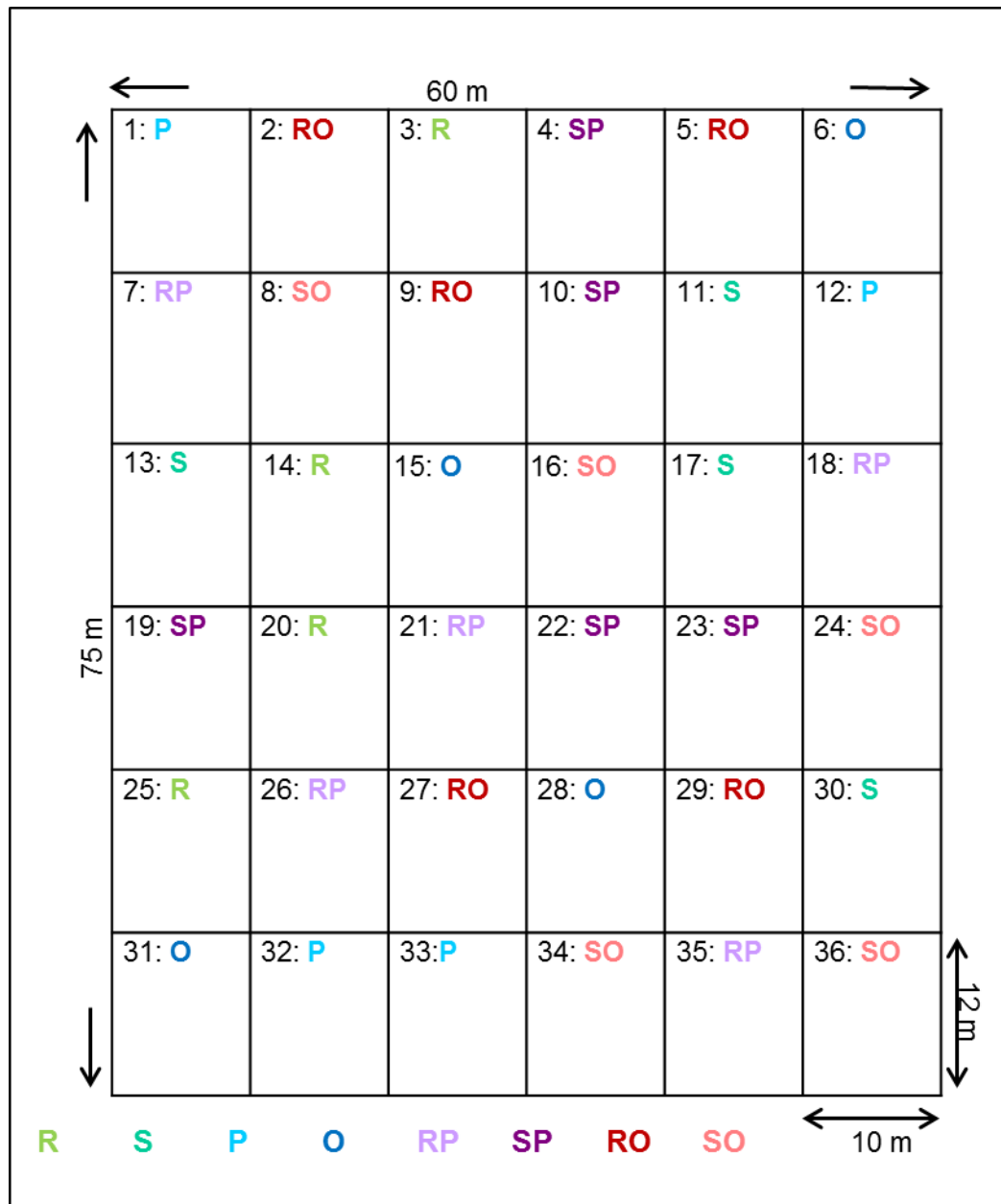
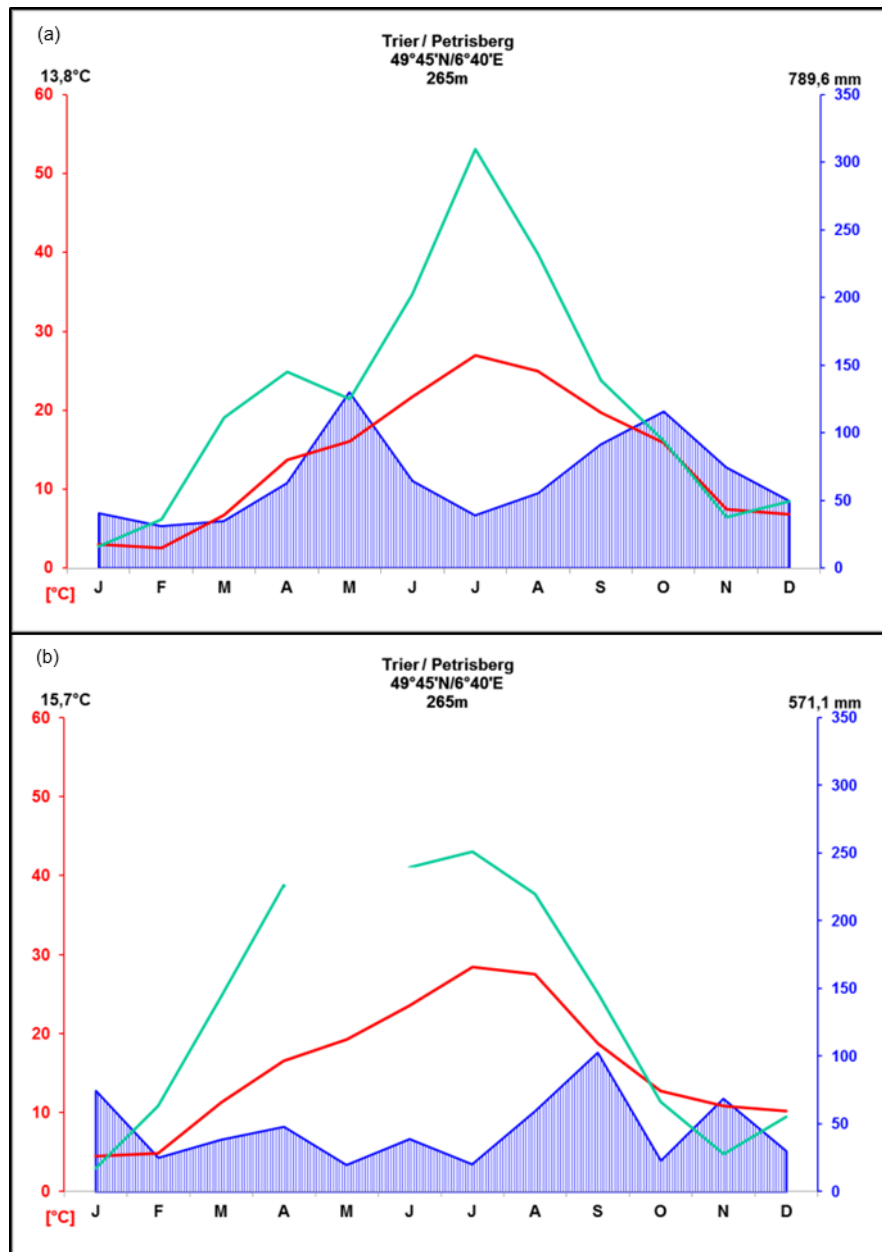


Supplemental material



S.1. Experimental design of the vineyard in Ayl (a), divided in 36 plots with cultivation systems, monoculture and mixed cropping. (R), Riesling; (RO), Riesling/oak; (RP), Riesling/poplar; (S), Sauvignon Blanc; (SO), Sauvignon Blanc/oak; (SP), Sauvignon Blanc/poplar; (O), oak; (P), poplar.



S.2. Annual precipitation [mm] (■), average temperature [°C] (■) and sunshine duration [h] (■) at closest official location in Trier/Pertrisberg from the experimental years 2013 (a) and 2015 (b). Time period of the measurement was January till December.