

Plants and Fungi in the Oikonyms of Lithuania

1:500 000

0 10 20 40 km

The map shows 1309 inhabited places of Lithuania that have names associated with the names of plants, plant communities and fungi. It is a part of map project developed for visual and statistical analysis of the spatial distribution of the toponyms and their relationship with the characteristics of the natural environment.



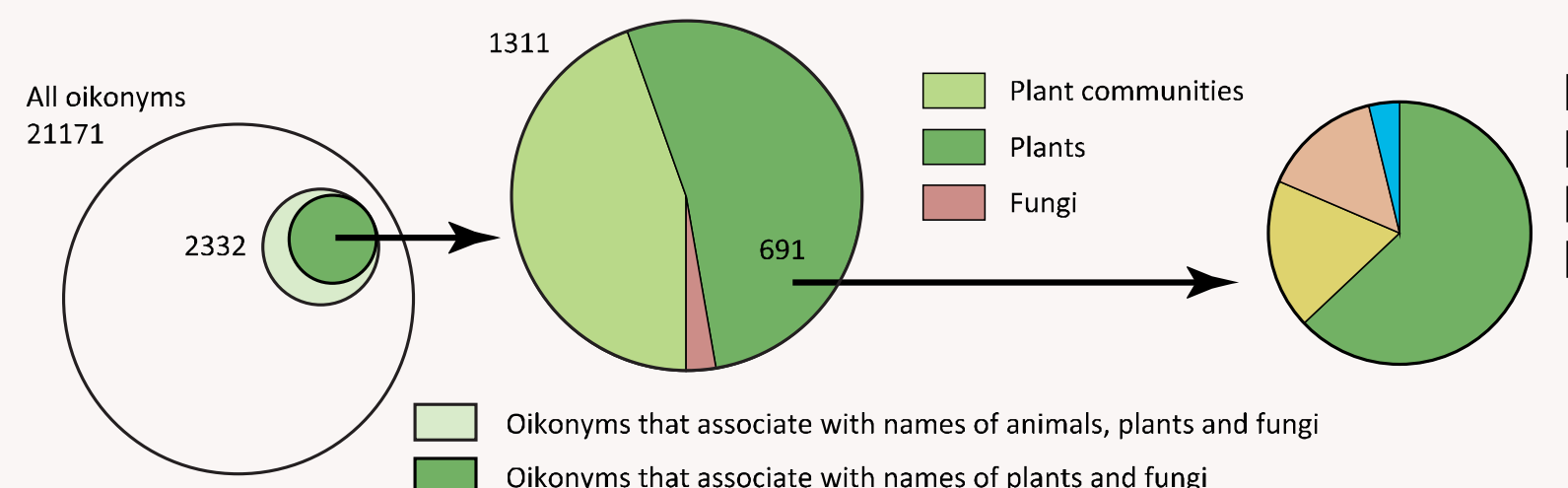
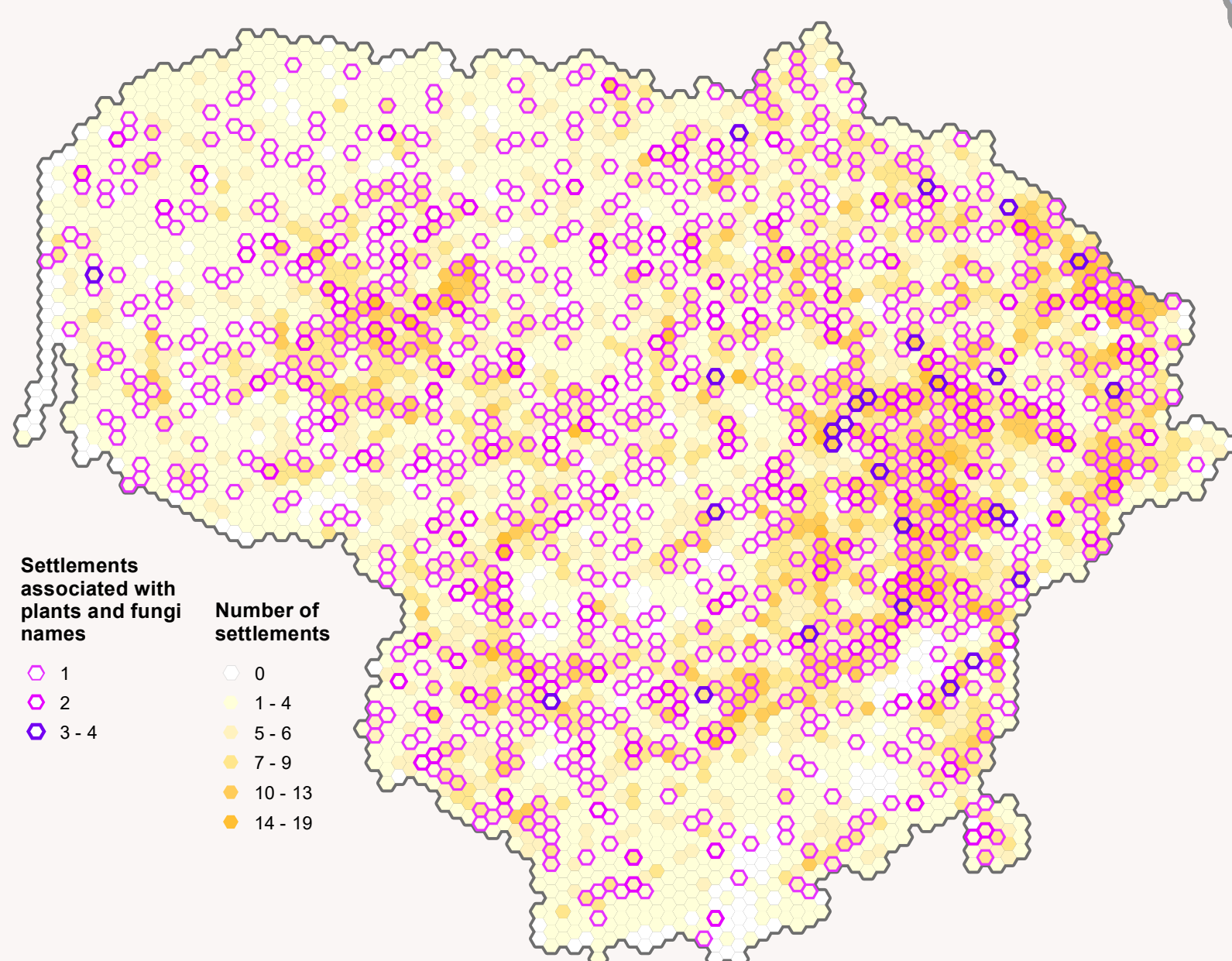
VILNIUS UNIVERSITY DEPARTMENT FOR
CARTOGRAPHY AND GEOINFORMATICS
OF THE INSTITUTE OF GEOSCIENCES

Authors

Giedrė Beconytė (project leader), Julius Donatas Budrevičius, Irena Ciparytė, Jonas Kaminskas, Evaldas Kazlauskas, Dalia Klimavičiūtė, Laura Kurgonaitė, Marius Marma, Dovydas Rutkauskas, Lukas Tubitis, Vilma Vanagaitė and Aurelija Viuckytė.

Lithuanian coordinate system LKS-94
Designed for printing at 594 x 841 mm (ISO A1)
© Journal of Maps, 2019

OIKONYMS ASSOCIATED WITH PLANTS AND FUNGI NAMES AND OVERALL DISTRIBUTION OF SETTLEMENTS



PROPORTION OF THE MOST COMMON PLANT NAMES IN LITHUANIAN OIKONYMS



LEGEND

- Mushroom
- Shrub
- Tree
- Moss
- Conifer
- Forest
- Vegetable
- Fruiter
- Pinewood
- Grain crop
- Other leafy tree
- Old-growth forest
- Flower
- Water plant
- Meadow
- Grass
- Vegetable garden

Ethnographic regions

- Aukštaitija
- Dzūkija
- Mažoji Lietuva
- Suvalkija
- Žemaitija

Data sources

Topographic data: Reference base cadastral dataset of Lithuania. © Ministry of Agriculture 2019
Geoinformational Database of Lithuanian Toponyms. © Institute for Lithuanian Language, 2018
Both datasets are available at www.geoportal.lt
Selection of the oikonyms that associate with the names of animals but are not explained in the Geoinformational Database of Lithuanian Toponyms has been performed by the Cartography MSc students using various printed and online sources.

VILNIUS
KAUNAS
VARENA
SAKALAI

Capital
County center
Municipal center
Oikonym associated with botanical name

State border
Road
Railway
River

Lake, pond, sea
Swamp
Forest
Built-up area